

From: Dan Schultz [mailto:dan.schultz@takshanuk.org]
Sent: Thursday, May 21, 2015 1:58 PM
To: David Sosa
Subject: More Heli maps

Dave,

Here are the rest of the maps. I included an overview map and then a close up of possible violations. Looks to be only one violation and the others are that the boundary line isn't exactly on the ridge line.

N204CH 2015_03_24 closeup looks more like the boundary isn't quite on the ridge even though it should be, so no violation.

N207CH 2015_04_04 closeup again looks more like the boundary isn't quite on the ridge even though it should be, so no violation

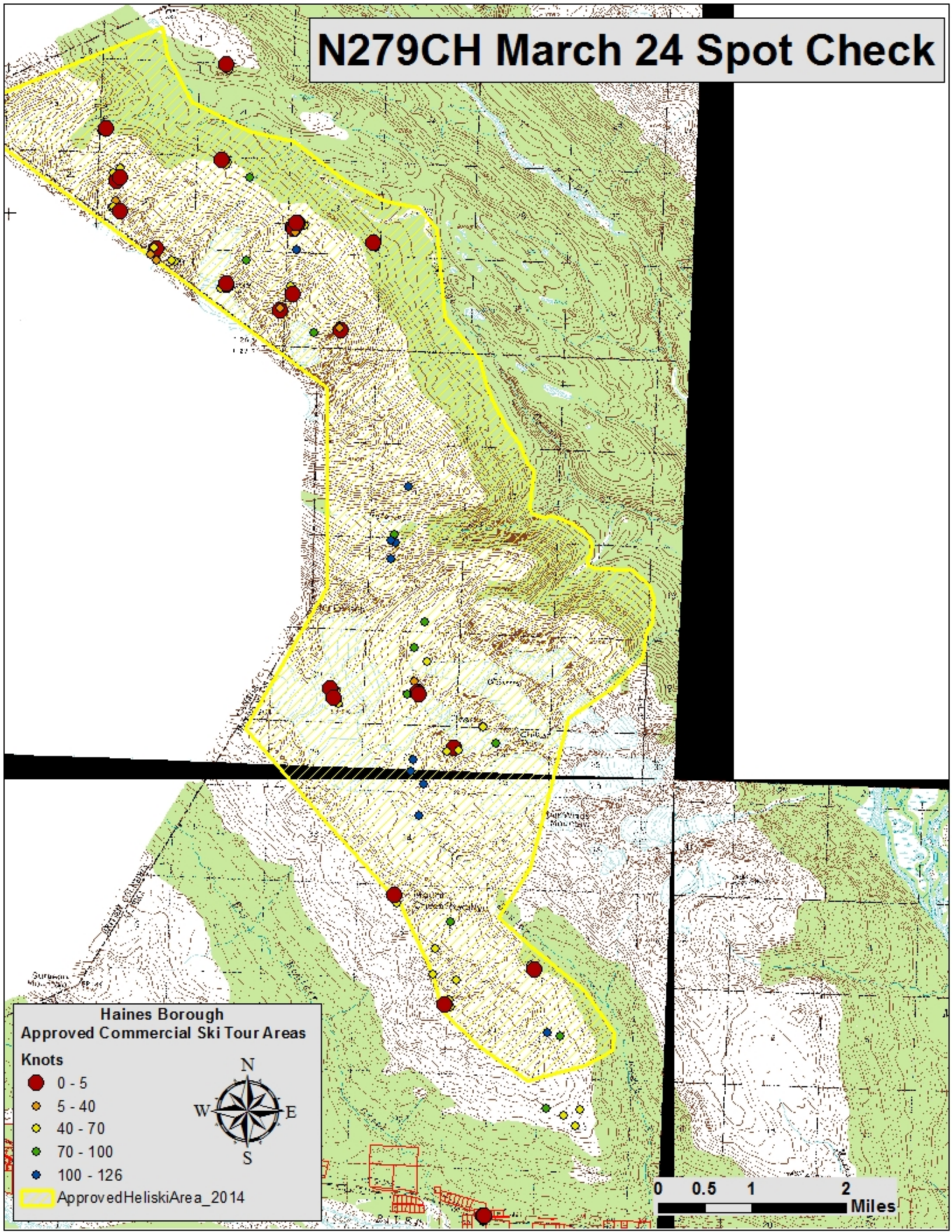
N279CH 2015_03_24 closeup has two points well out of the boundary. In their data base they are points 79 and 80. Point 80 has in the events column "pausing", which I have no idea what that means. But this one seems to be a violation but it doesn't look like it is a spot where you would pick up or drop off skiers. Last year there was a similar violation where the pilot landed outside of the boundary because he had time to kill between pickups and drop-offs. And if I remember right it was considered a violation.

N360CH 2015_04_06 closeup again looks more like the boundary isn't quite on the ridge even though it should be, so no violation.

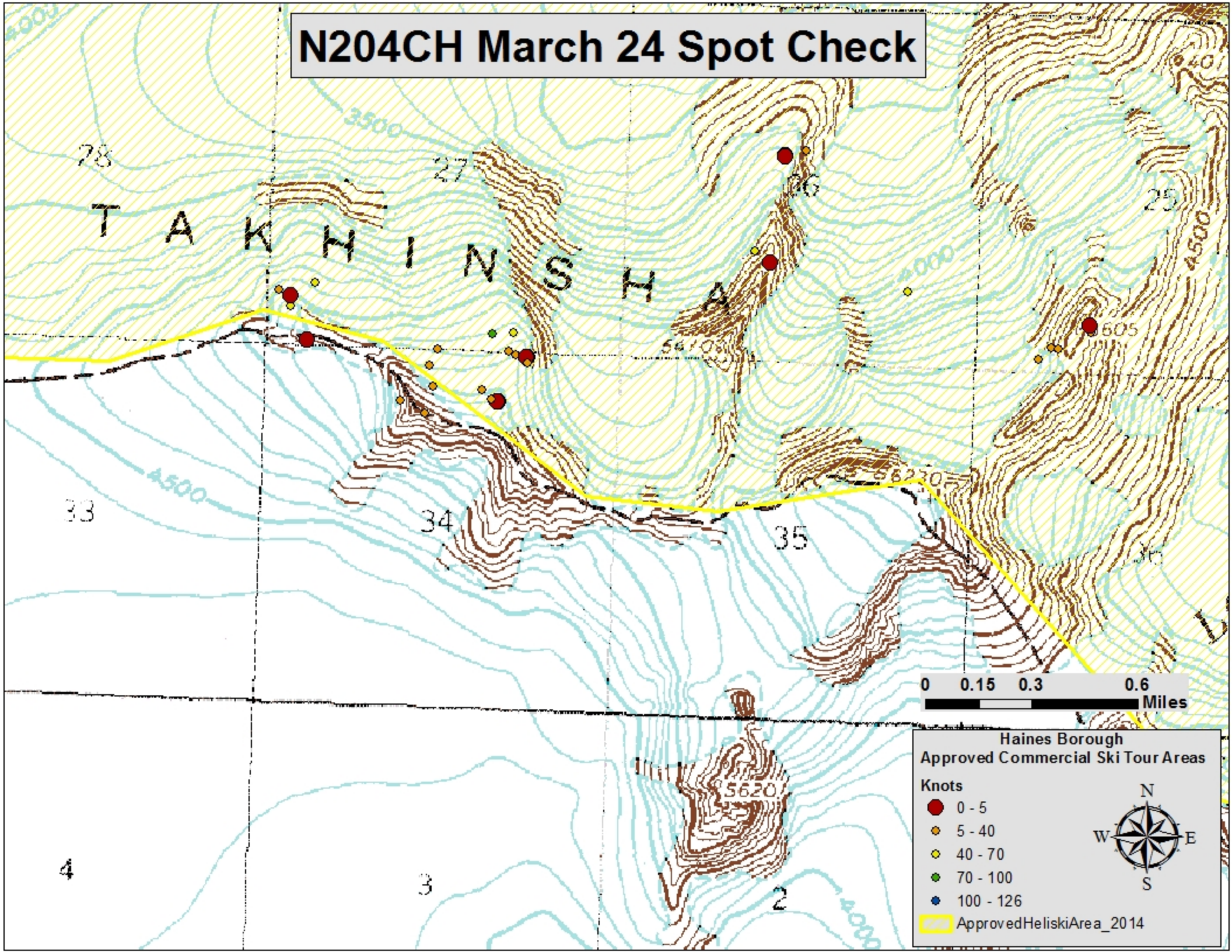
As always if you need some more clarification please let me know.

Dan
766.3542

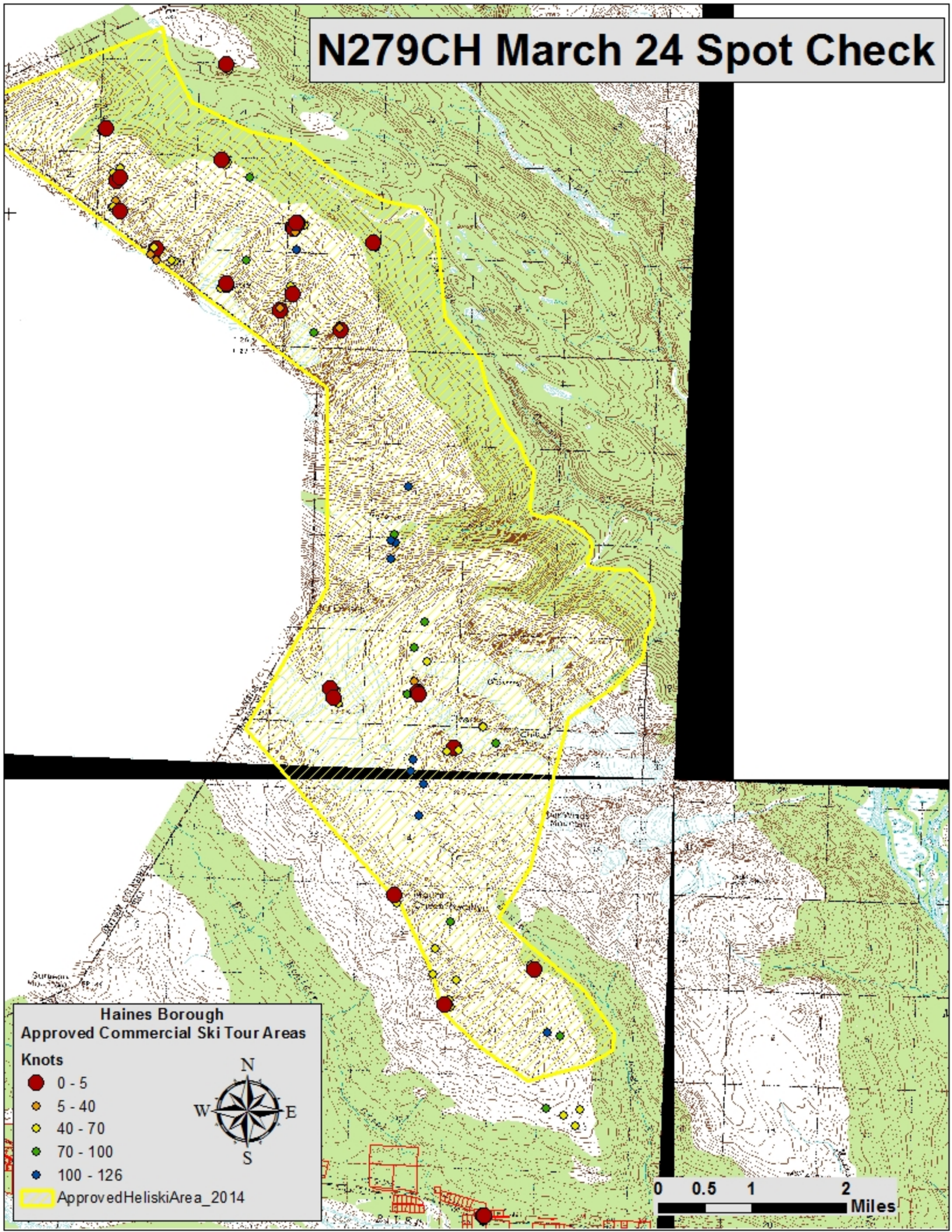
N279CH March 24 Spot Check



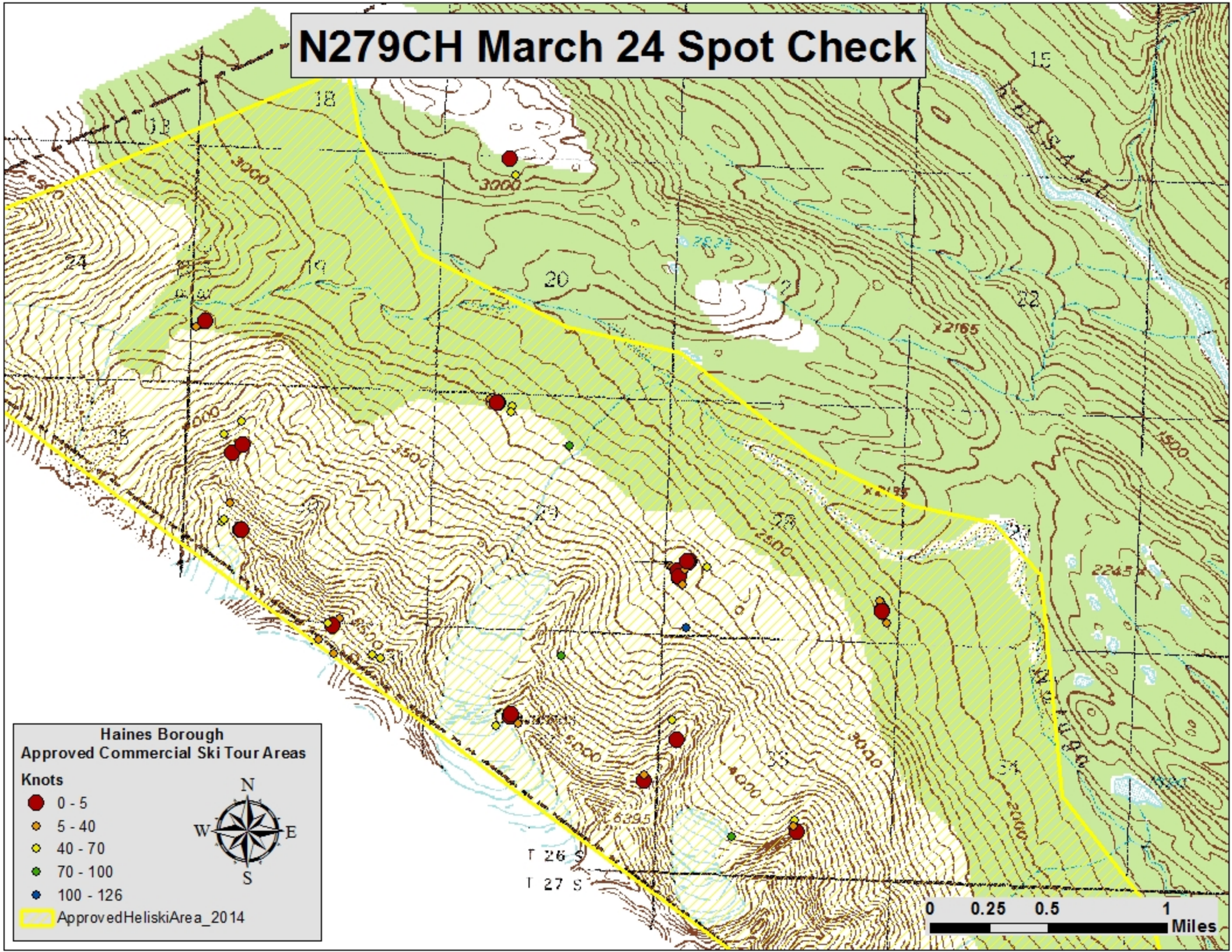
N204CH March 24 Spot Check



N279CH March 24 Spot Check



N279CH March 24 Spot Check



Haines Borough Approved Commercial Ski Tour Areas

Knots

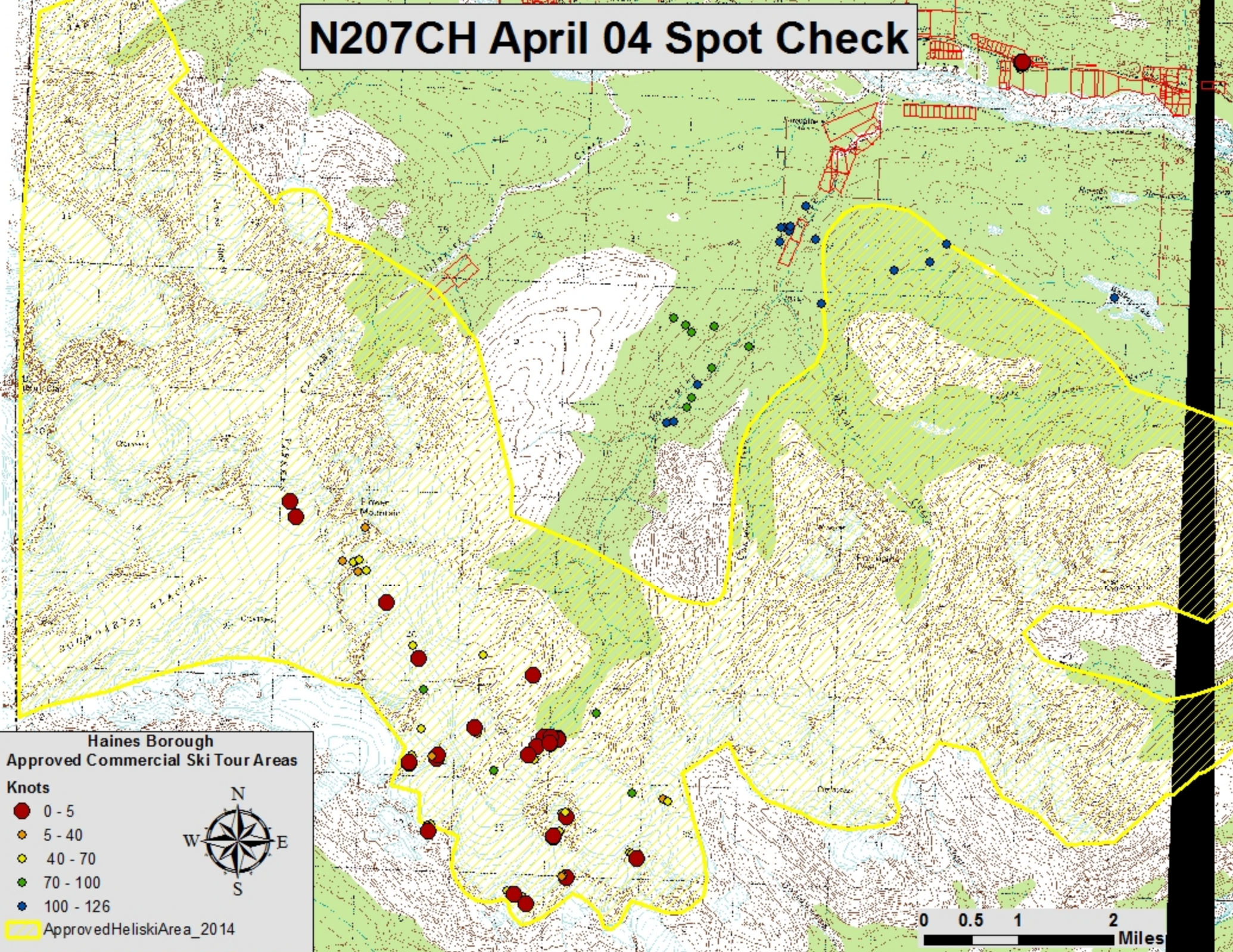
- 0 - 5
- 5 - 40
- 40 - 70
- 70 - 100
- 100 - 126



ApprovedHeliskiArea_2014

0 0.25 0.5 1 Miles

N207CH April 04 Spot Check




**Haines Borough
Approved Commercial Ski Tour Areas**

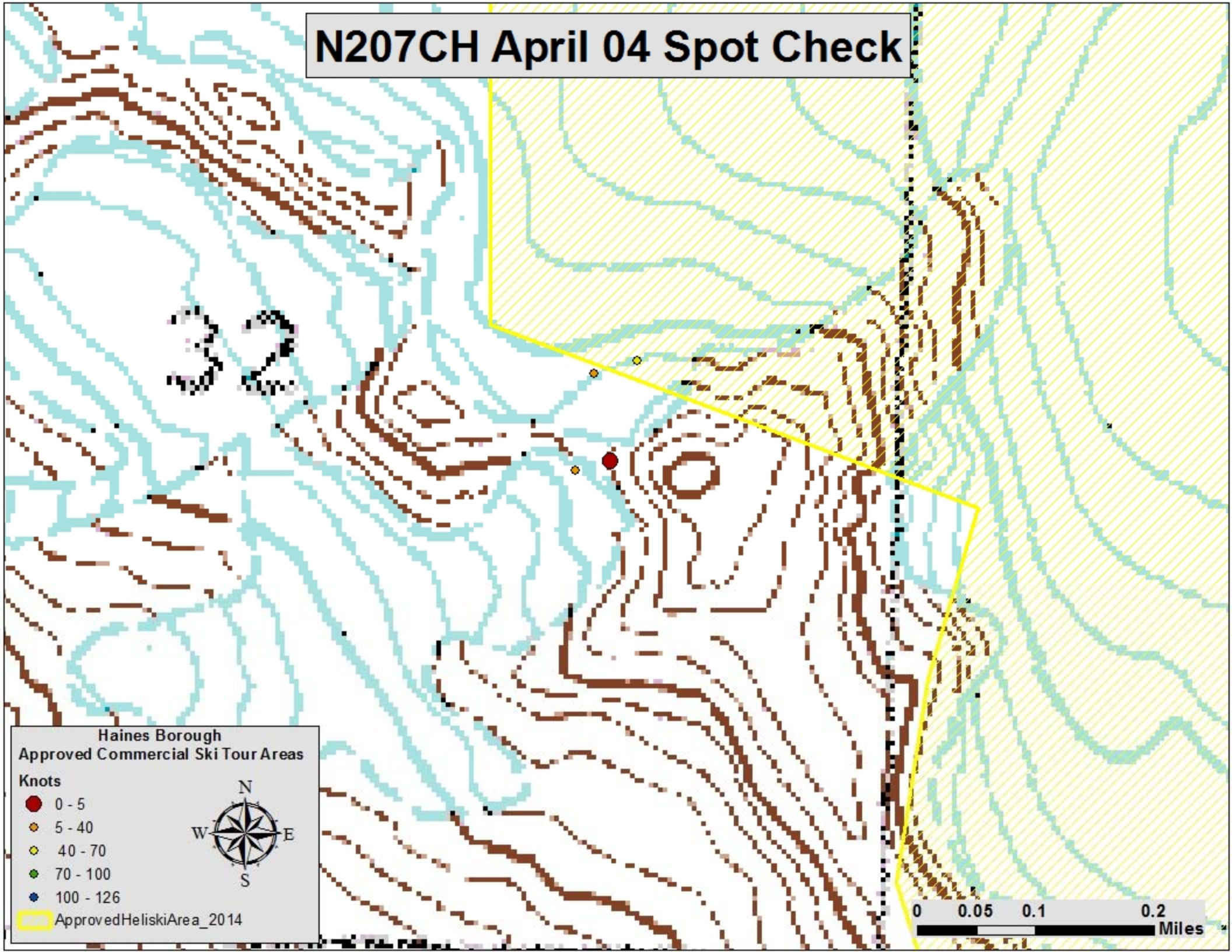
Knots

- 0 - 5
- 5 - 40
- 40 - 70
- 70 - 100
- 100 - 126

Approved Heliski Area_2014



N207CH April 04 Spot Check



Haines Borough Approved Commercial Ski Tour Areas

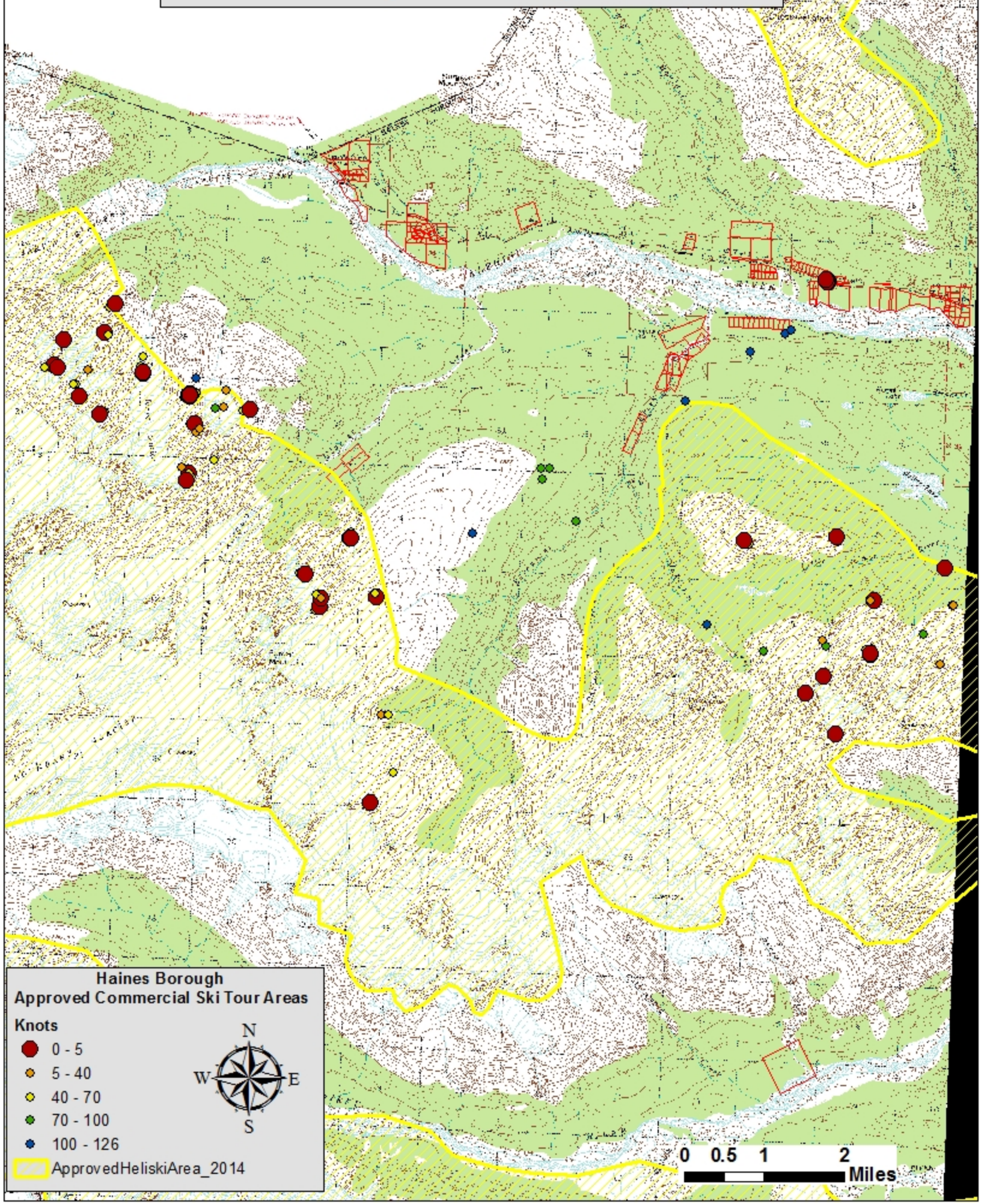
- Knots**
- 0 - 5
 - 5 - 40
 - 40 - 70
 - 70 - 100
 - 100 - 126



ApprovedHeliskiArea_2014

0 0.05 0.1 0.2 Miles

N360CH April 06 Spot Check



Haines Borough Approved Commercial Ski Tour Areas

- Knots**
- 0 - 5
 - 5 - 40
 - 40 - 70
 - 70 - 100
 - 100 - 126



ApprovedHeliskiArea_2014

0 0.5 1 2 Miles

N360CH April 4 Spot Check

