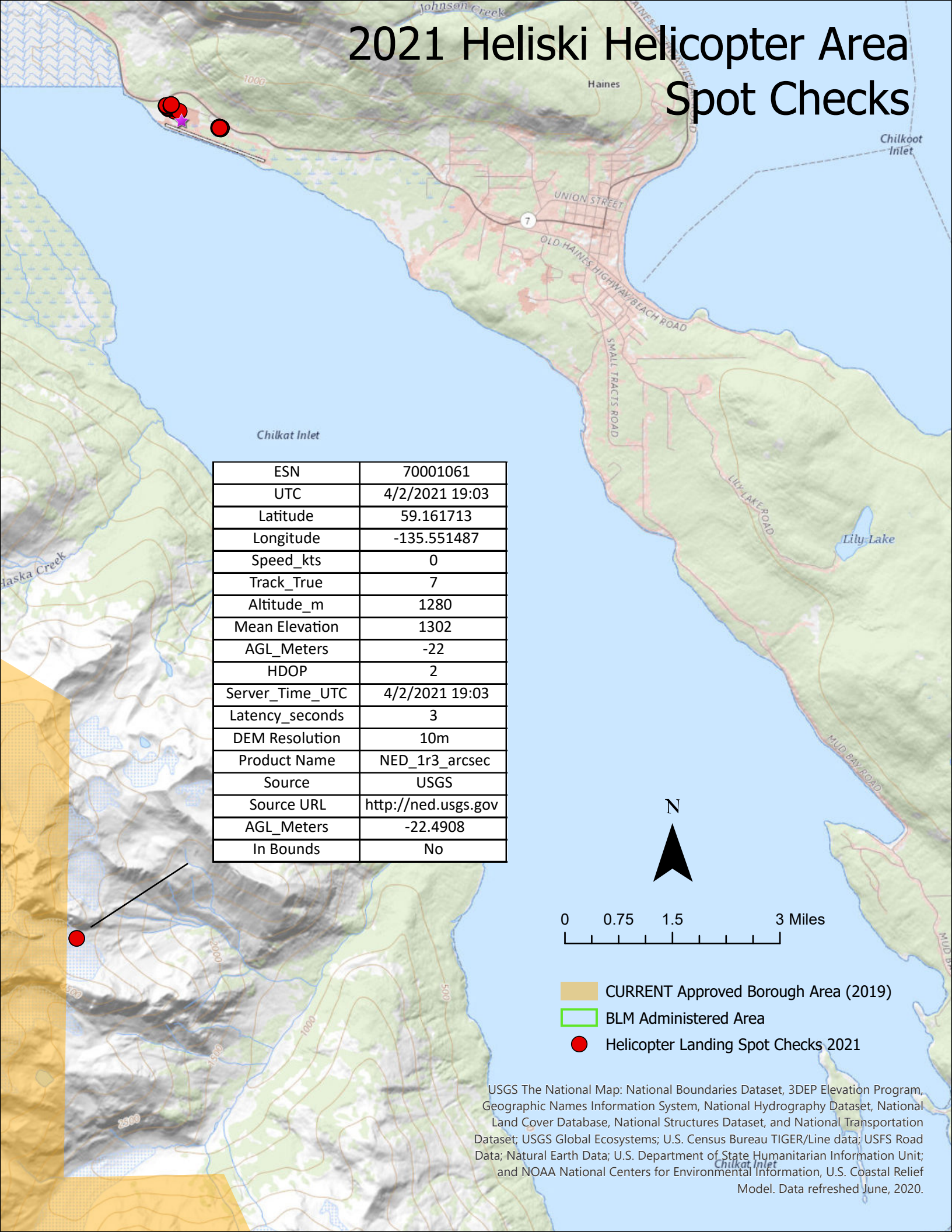
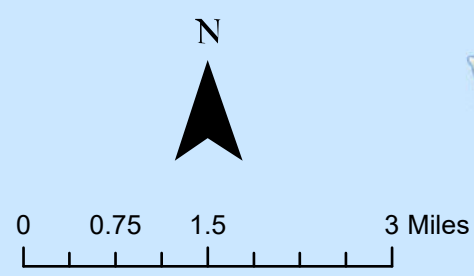


# 2021 Heliski Helicopter Area Spot Checks



ESN	70001061
UTC	4/2/2021 19:03
Latitude	59.161713
Longitude	-135.551487
Speed_kts	0
Track_True	7
Altitude_m	1280
Mean Elevation	1302
AGL_Meters	-22
HDOP	2
Server_Time_UTC	4/2/2021 19:03
Latency_seconds	3
DEM Resolution	10m
Product Name	NED_1r3_arcsec
Source	USGS
Source URL	<a href="http://ned.usgs.gov">http://ned.usgs.gov</a>
AGL_Meters	-22.4908
In Bounds	No



- CURRENT Approved Borough Area (2019)
- BLM Administered Area
- Helicopter Landing Spot Checks 2021

USGS The National Map: National Boundaries Dataset, 3DEP Elevation Program, Geographic Names Information System, National Hydrography Dataset, National Land Cover Database, National Structures Dataset, and National Transportation Dataset; USGS Global Ecosystems; U.S. Census Bureau TIGER/Line data; USFS Road Data; Natural Earth Data; U.S. Department of State Humanitarian Information Unit; and NOAA National Centers for Environmental Information, U.S. Coastal Relief Model. Data refreshed June, 2020.