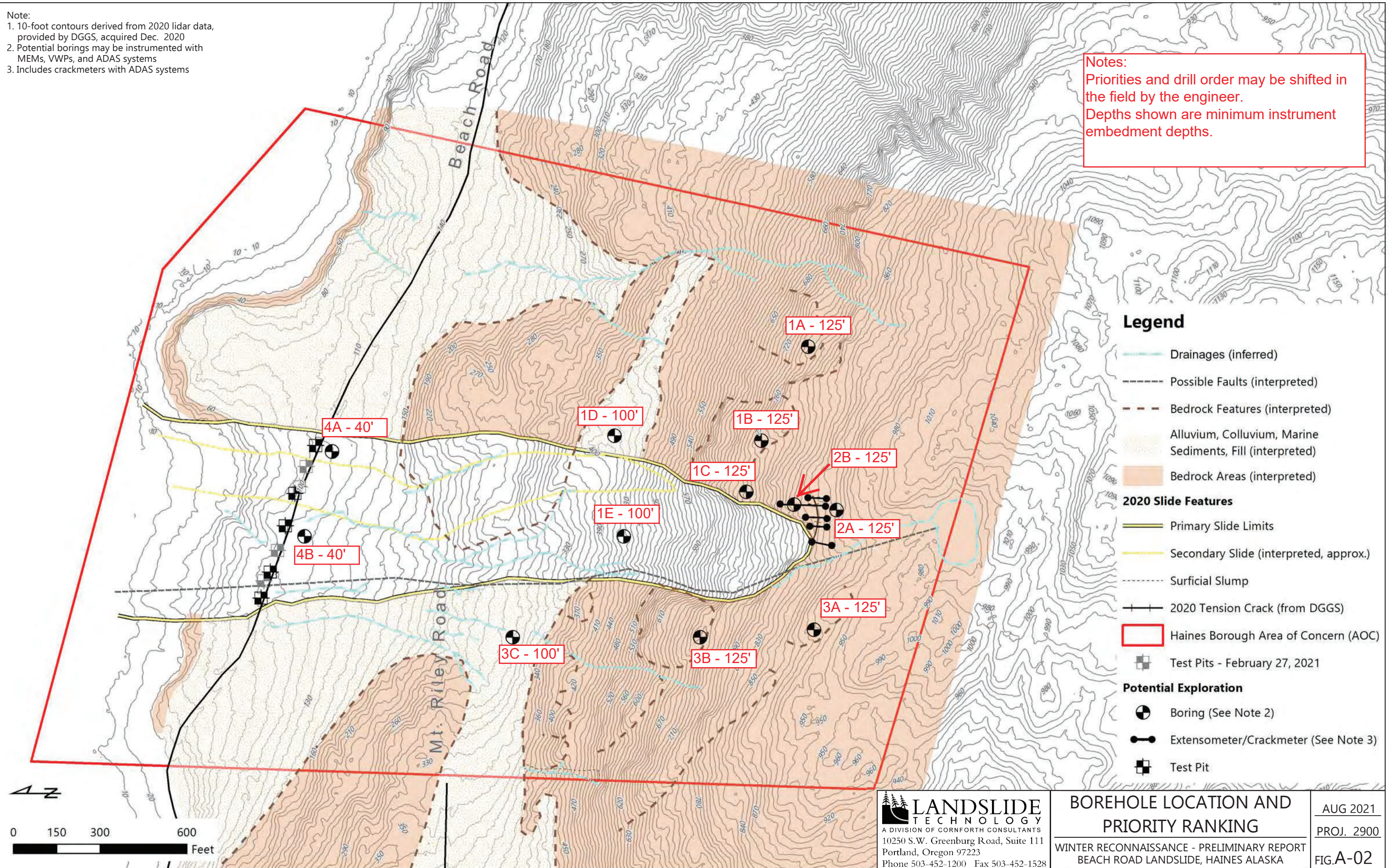


- Note:
1. 10-foot contours derived from 2020 lidar data, provided by DGGs, acquired Dec. 2020
  2. Potential borings may be instrumented with MEMs, VWP's, and ADAS systems
  3. Includes crackmeters with ADAS systems

Notes:  
 Priorities and drill order may be shifted in the field by the engineer.  
 Depths shown are minimum instrument embedment depths.



- Legend**
- Drainages (inferred)
  - Possible Faults (interpreted)
  - Bedrock Features (interpreted)
  - Alluvium, Colluvium, Marine Sediments, Fill (interpreted)
  - Bedrock Areas (interpreted)
- 2020 Slide Features**
- Primary Slide Limits
  - Secondary Slide (interpreted, approx.)
  - Surficial Slump
  - 2020 Tension Crack (from DGGs)
- Haines Borough Area of Concern (AOC)**
- Test Pits - February 27, 2021
- Potential Exploration**
- Boring (See Note 2)
  - Extensometer/Crackmeter (See Note 3)
  - Test Pit

**LANDSLIDE TECHNOLOGY**  
 A DIVISION OF CORNFORTH CONSULTANTS  
 10250 S.W. Greenburg Road, Suite 111  
 Portland, Oregon 97223  
 Phone 503-452-1200 Fax 503-452-1528

**BOREHOLE LOCATION AND PRIORITY RANKING**  
 WINTER RECONNAISSANCE - PRELIMINARY REPORT  
 BEACH ROAD LANDSLIDE, HAINES ALASKA

AUG 2021  
 PROJ. 2900  
 FIG.A-02