

HAINES BOROUGH HAINES, ALASKA PUBLIC NOTICE

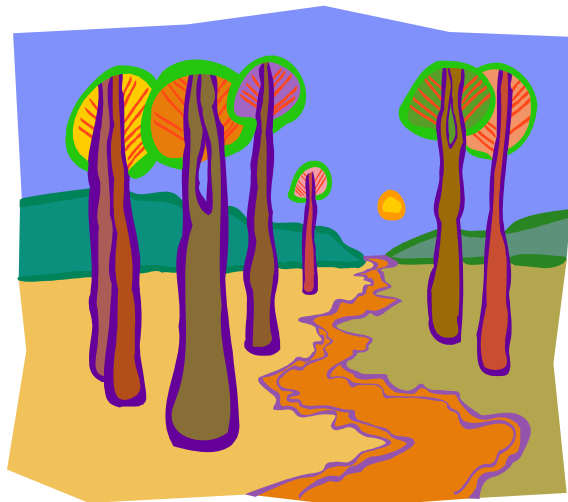
AT **6:30 p.m., August 9, 2016**, IN THE ASSEMBLY CHAMBERS OF THE PUBLIC SAFETY BUILDING, A PUBLIC HEARING WILL BE HELD ON THE FOLLOWING:

APPLICATION FOR A NEW COMMERCIAL TOUR

Alaska Mountain Guides

Alaska Mountain Guides Adventures, Inc., has applied to add a new tour activity to the company's other permitted tour activities. They propose to offer an ATV tour on established forestry roads and trails in the Lower Klehini River Area and Flower Mountain Area (Haines Forest/DNR land).

Title 5 of the Haines Borough code requires a public hearing before the assembly for all new tour activities. More information is attached to this notice (descriptions & maps) and is also available in the borough clerk's office and on the website: <http://www.hainesalaska.gov/boroughassembly> (click on "Borough Assembly Meeting" under "Upcoming Events").



Comments may be made at the public hearings or sent to P.O. Box 1209, Haines, AK 99827 or jcozzi@haines.ak.us or kkielsmeier@haines.ak.us.

Posted 7/29/16
Julie Cozzi, MMC, Borough Clerk

Commercial Tour Application

Alaska Mountain Guides is applying for a commercial recreation permit for an ATV tour on Haines Forest/DNR land (see attached map for specific locations)

The tour would be structured as a 4 hour tour starting and ending in Haines. Guests would arrive to a staging area on private property. After a thorough safety briefing and orientation, guests would be guided on existing roads and return to the staging area.

The exact location of each tour would vary, but stay on the establish roads denoted in the attached map. The guides would strive to use areas that minimize interactions with other users.

* We have already received a permit through the state for this activity. This is included separately within the packet.

Location:

Established forestry roads and trails in the Lower Klehini River Area and Flower Mountain Area of Haines, Northern Southeast Alaska.

See the maps below for highlighted trails.

Copper River Meridian , Township 28 South, Range 55 East, Sections 31, 32, 33 & 34

Copper River Meridian , Township 28 South, Range 54 East, Sections 26-32, 35 & 36

Copper River Meridian , Township 29 South, Range 54 East, Sections 3, 4 & 9

Copper River Meridian , Township 29 South, Range 55 East, Sections 1, 2, 6, 11 & 12

Site Access

- The tour would be begin and end from private property located on Porcupine Road, approximately ½ mile from the Klehini River Bridge.
- Flower Mountain Area – any ATV tours to the Flower Mountain Area would be less than 10 guests per day. And no more than 500 people total for the year.
- Porcupine Road – ATV traffic on porcupine road would be limited to the short distance from the private property to Little Salmon Road turn off (as indicated on the map). Otherwise, this tour will not utilize Porcupine Road.
- Tour would only use existing and established roads and trails suitable for ATV use

Seasonal Operation

May 1 – September 30

Motorized Equipment

ATV side-by-side vehicles with either 2 or 4 person capacity.

Total # of vehicles – 10 ATVs – (8 machines for guests, and 2 machines for guides)

Number of People

- # of staff – 4 guides
- # of people per group/tour – Group size would be limited to 24 guests & 2 guides.
- # of trips per day – Up to 5
- Up to a total possible capacity of 9000 people per year. Total actual capacity is normally significantly less.

Environmental Risk

No fueling would take place on DNR Land – all would take place on private property.

Each ATV vehicle has a maximum of an 8 gallon fuel tank.

Temporary Structures

There would be no temporary structures placed on DNR land. All structures/program support infrastructure would be place on private property.

Safety Measures

- Lead guide and follow guide – each group will be behind a guide that will control speed of the group. The group will be tightly spaced and yield to oncoming traffic as appropriate. Guides will carry radios.
- Guides will be trained to slow speed and use the far right side of the road, especially when near any corners or sections with limited sight distance. This will be a part of the safety briefing with guests.
- Tall orange flagging on the ATVs –each machine would have tall orange flagging to increase its visibility on the road
- Lights – all vehicles will operate with lights during the day to increase visibility.
- All guests will wear helmets during the activity.
- ATV's will be outfitted with governors to control maximum speed for client vehicles.

Road Maintenance Support - (per our permit with DNR)

- AMG will make efforts to increase visibility on certain road sections that we would utilize that have limited visibility due to vegetative growth. - we will cut back encroaching Alders to maximize visibility sections of road with less visibility.
- AMG would maintain and repair any ruts/sections or disrepair caused by our ATV traffic on existing roads.
- Certain roads indicated on the map may be brushed over, and inaccessible due to years of being unused. AMG would brush out these roads prior to use.

Historical permit – A very similar permit was previously approved in this same area. LAS20635

was nearly identical in its operations and it was in place from 2008 to 2013. Since its expiration, there has been no revised Haines Forest Management Plan. This permit was permitted for 12,000 people per year. It allowed for 22 machines. Given the history of this pre-existing permit, we would hope that our permit application for less people, and fewer machines, would be approved for the same areas.

