

Haines Borough Maintained Trail Systems Crossing Alaska Mental Health Trust Land



<https://www.alltrails.com/members/robert-kallioinen/photos>

August 21, 2019

Mount Riley Trail System

Trail Description: A popular hike due to the proximity of the trailhead with the cruise dock. The primary trail is a four mile out and back hike beginning on Mud Bay Road. The trail makes its way up the southeast side of Mt. Riley through a coniferous forest. Mt. Riley is the tallest mountain within the Haines Peninsula and provides a 360 degree vantage point at the summit.

Commercial Use: Haines has issued five Commercial Tour Permits to provide guided hikes on Mount Riley Trail.

Alaska Mountain Guides and Climbing School

Alaska Nature Tours

Alaska Outdoor Science School

Sockeye Cycle

Uncruise Adventures

Trail Maintenance: With the high number of visitors every year, the trail system has seen multiple phases of trail improvement including bridges, boardwalks, and improved drainage.

Trespass Details: A trail 20 Feet wide and 8,976 feet in length traversing the NW $\frac{1}{4}$ of parcel CRM-0698 and running south along the E $\frac{1}{2}$ of a portion of CRM-0718 containing approximately 4.12 acres more or less.

Legal Description: CRM-0698

T. 031 S., R. 059 E., COPPER RIVER MERIDIAN, ALASKA

SECTION 12: N1/2SW1/4;

CONTAINING 80.00 ACRES, MORE OR LESS.

ACCORDING TO THE SURVEY PLAT ACCEPTED BY THE UNITED STATES
DEPARTMENT
OF THE INTERIOR, BUREAU OF LAND MANAGEMENT IN WASHINGTON, D.C. ON
SEPTEMBER 9, 1952

Legal Description: CRM-0718

T. 031 S., R. 059 E., COPPER RIVER MERIDIAN, ALASKA

SECTION 13: NE1/4;

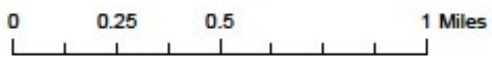
CONTAINING 160.00 ACRES, MORE OR LESS.

ACCORDING TO THE SURVEY PLAT ACCEPTED BY THE UNITED STATES
DEPARTMENT
OF THE INTERIOR, BUREAU OF LAND MANAGEMENT IN WASHINGTON, D.C. ON
SEPTEMBER 9, 1952.

Mount Riley Trail System



	Trailhead
	Peak Name
	MHT Parcels
	Existing Trails



Mount Ripinsky Trail

Trail Description: A popular and well-maintained trail that takes the southern ridge to the summit. There are three trail heads that can be taken to reach the summit. The most popular and maintained trail is the skyline trail which is a longer but more moderate climb.

Commercial Use: Although there are no guided hikes available, there are two races that occur yearly. The first race is on the 4th of July and may cut directly through Mental Health land. Although the race has occurred annually for over a decade, there is little more than a few mentions online, and the exact course is unknown. The second race is a winter traverse that traverses from the west side to the summit then ski's down the east. The winter traverse named "Kat to Koot" although takes place far from Trust Land shows an increase of interest of the mountain trail system.

Trail Maintenance: To improve the experience for hikers, bridges have been built to bypass bogs and improved drainage has occurred. The borough parks and recreation are planning to add trail markers.

Trespass Details: A trail 20 feet wide and 2,266 feet in length containing the S ½ of parcel CRM-0605-B containing approximately 0.58 acres more or less.

Legal Description: CRM-0605-B

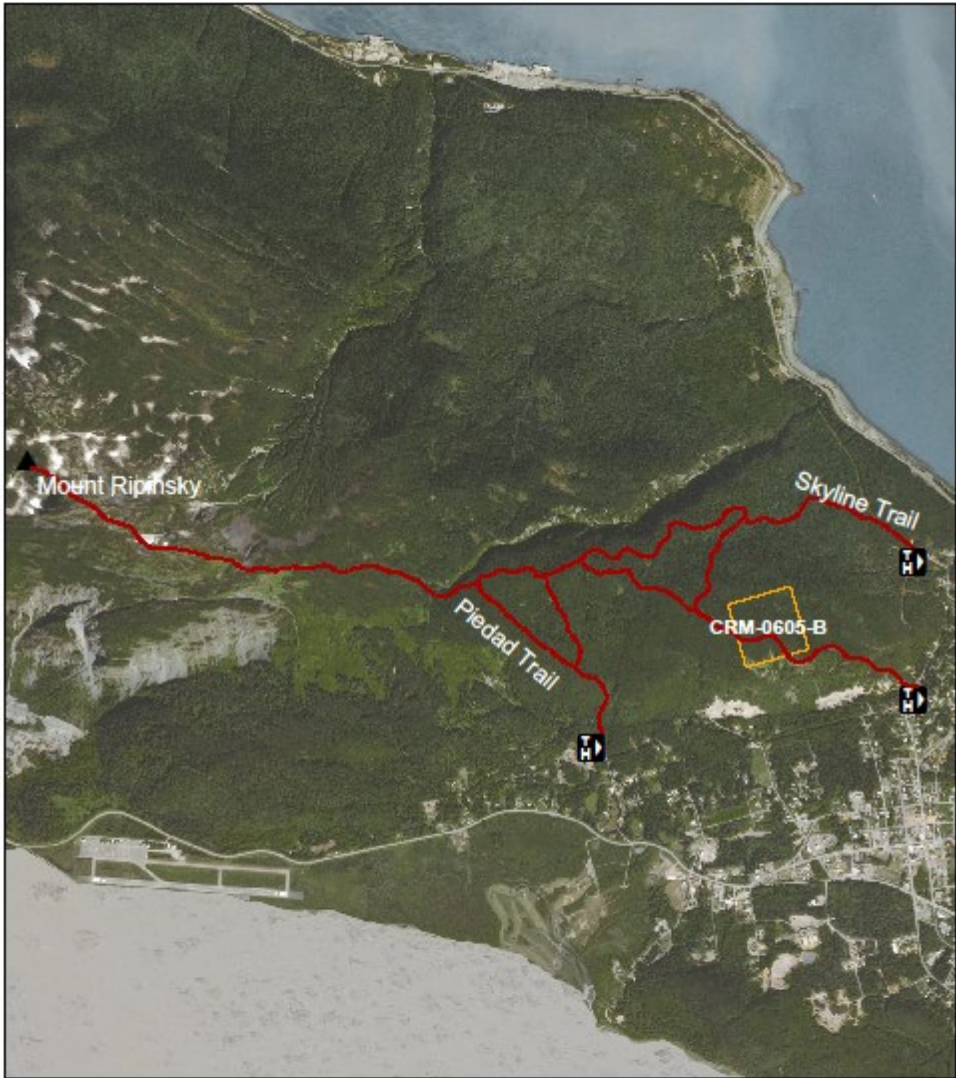
T. 030S., R. 059E., COPPER RIVER MERIDIAN, ALASKA

SECTION 27: NW1/4NE1/4;

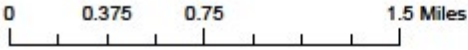
CONTAINING 40.00 ACRES, MORE OR LESS.

ACCORDING TO THE SURVEY MAP EXAMINED AND APPROVED BY THE U.S.
SURVEYOR
GENERAL'S OFFICE IN JUNEAU, ALASKA ON MARCH 11, 1922.

Mount Ripinsky Trail System



	Trailhead
	Peak Name
	MHT Parcels
	Existing Trails



7 Mile Saddle Trail

Trail Description: A steep and strenuous hike that travels directly up slope to reach the ridgeline of the Takshanuk Mountains. Many who take this trail choose to complete the entire traverse and finish on the eastern trails of Mount Ripinsky. It is considered the most difficult managed trail in Haines which makes it popular for hikers looking for a challenge.

Commercial Use: There is no commercial activity on the 7 Mile Saddle Trail.

Trail Maintenance: There hasn't been major trail maintenance beside brush clearing.

Trespass Details: A trail 20 feet wide and 580 feet in length transecting the E ½ of parcel CRM-0571 containing approximately 0.27 acres more or less.

Legal Description: CRM-0571

T. 030S., R. 058E., COPPER RIVER MERIDIAN, ALASKA

SECTION 14: LOT 5;

CONTAINING 17.380 ACRES, MORE OR LESS.

ACCORDING TO THE SURVEY PLAT ACCEPTED BY THE UNITED STATES
DEPARTMENT
OF THE INTERIOR, BUREAU OF LAND MANAGEMENT IN WASHINGTON, D.C. ON
AUGUST 6, 1953.

7 Mile Saddle Trail



References:

<https://www.alaska.org/destination/haines/parks-and-trails>

<https://www.alltrails.com/trail/us/alaska/mount-ripinsky-and-7-mile-saddle-trail>

<https://www.hainesalaska.gov/cp2025>

<http://skagwayexcursion.com/haines/mount-riley-hike/>

<https://www.alaskanaturetours.net/mount-riley-summit-hike>

<https://www.aoss.education/integral-adventure/>

<https://www.cyclealaska.com/haines-bike-hike-and-brew>

<https://www.uncruise.com/destinations/alaska-cruises/alaska-cruise-activities>

<https://www.visithaines.com/>

<https://khns.org/haines-gears-up-for-second-annual-winter-fest>

<https://www.alltrails.com/members/robert-kallioinen/photos>