

# Community Engagement for an Interconnected Waterfront Trail

## 3 Components:

- Portage Cove Walkway
- Tlingit Park Rehabilitation & Connection
- Harbor Park Connection



# INTERCONNECTED TRAIL



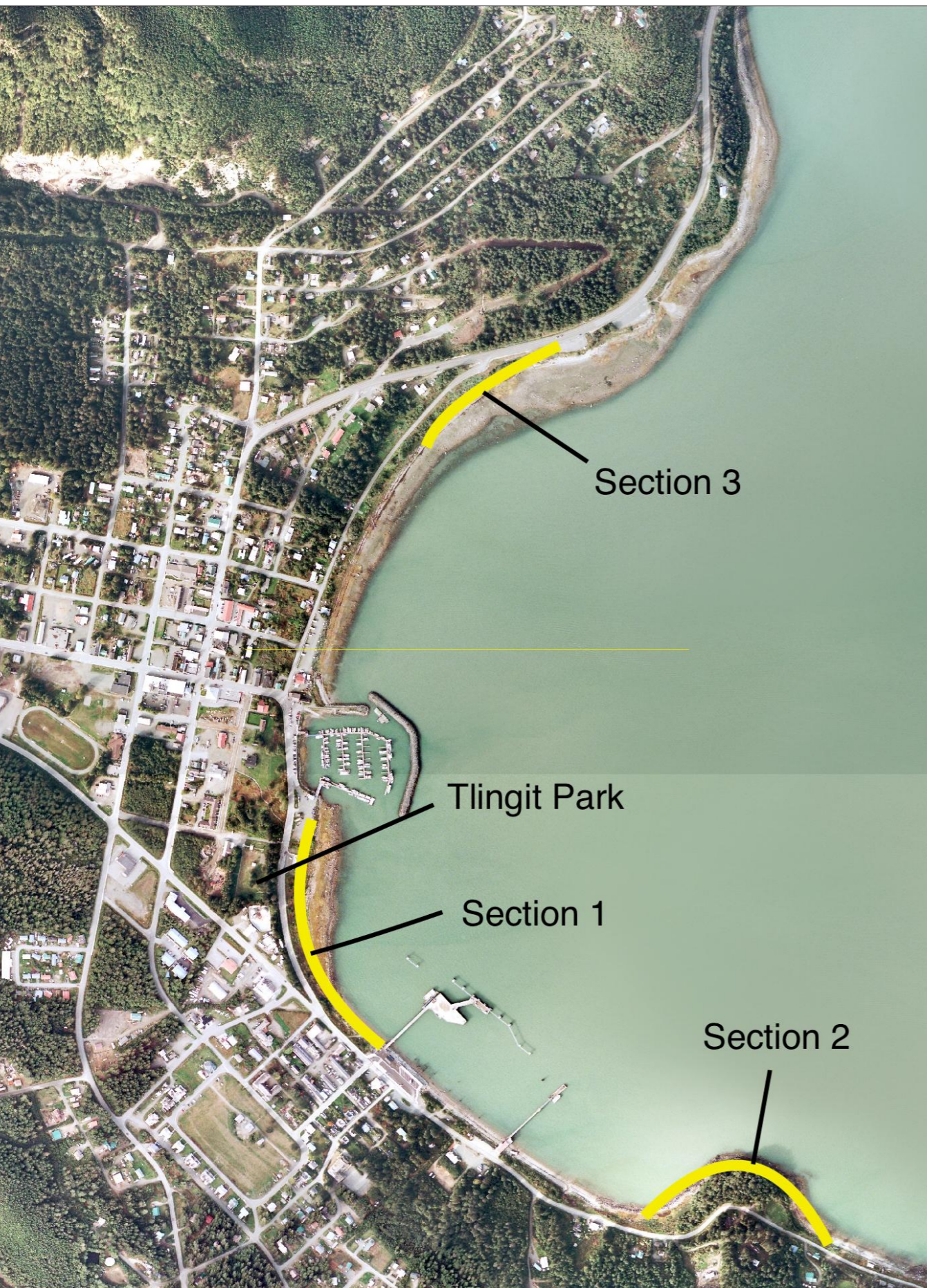
# PORTAGE COVE WATERFRONT TRAIL

**Build an ADA accessible gravel waterfront trail along 3 sections of Portage Cove:**

**Section 1:** Between harbor parking lot and cruise ship dock, with ADA ramp on each end

**Section 2:** From Portage Cove campground toward town, up to private property boundary

**Section 3:** From Picture Point toward town, up to private property boundary





# TRAIL SECTION 1:

Between harbor parking lot and  
cruise ship dock, with ADA ramp  
on each end

# TRAIL SECTION 2:

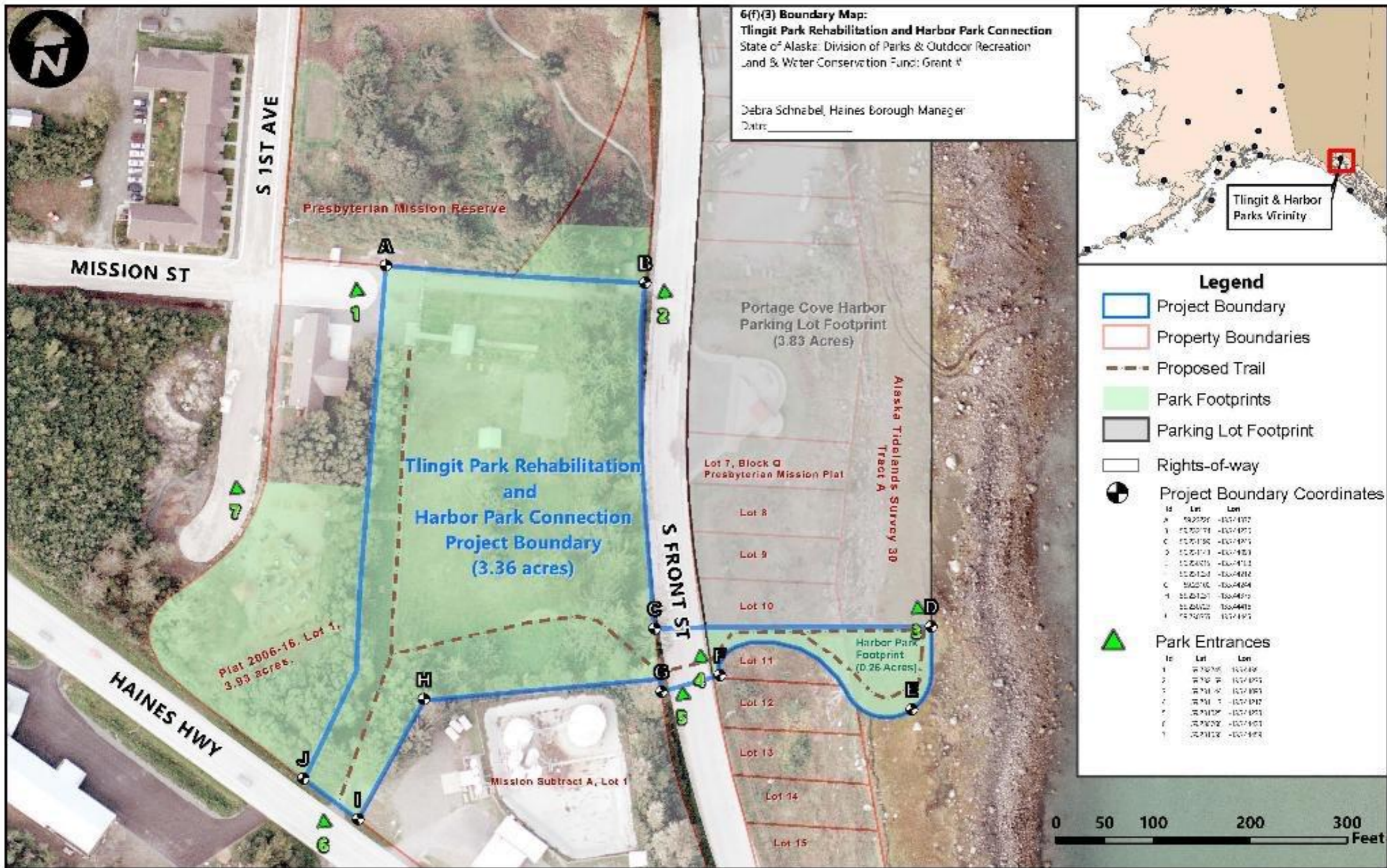
From Portage Cove campground  
toward town, up to private  
property boundary





## TRAIL SECTION 3:

From Picture Point toward town,  
up to private property boundary



# TLINGIT PARK AND HARBOR CONNECTION: PLANNED UPGRADES



## TLINGIT PARK AND HARBOR CONNECTION: PLANNED UPGRADES

- Install ADA ramp at south entrance of park
- Replace Tlingit Park pavilion with a larger, ADA accessible pavilion
- Upgrade existing trail through park to ADA standards, connecting entrance ramp and pavilion
- Incorporate art, such as a totem pole, in the park
- Build a pavilion in the new harbor parking lot, connected to Tlingit park





# SCOPE OF PROJECT



SUPPORTS  
DOWNTOWN  
REVITALIZATION  
AND  
COMPREHENSIVE  
PLAN 2012

# PROJECT SUPPORTS HAINES BOROUGH COMPREHENSIVE PLAN 2012 GOALS

Goal: Provide public access to coastal areas, rivers and lakes. (7.3.3 Public Access to Coastal Areas, Rivers, and Lakes.)

- Developing and marketing a system of interconnected pathways and trails.
- Providing disabled access to public use areas, pathways and trails.
- Beautifying the Portage Cove waterfront and other visually prominent areas.

Goal: Provide a diversity of parks, recreation facilities, trails, and open spaces to foster the health and wellness of Haines residents. (8.1 Parks, Recreation, and Open Space.)

- A continuous walking path along the waterfront that connects destinations and parks is desired by both tourists and residents.

# WHAT ARE THE COLLABORATOR ROLES

- Haines Borough: grant proposal writing, allocating of funds, permitting, agreements with property owners
- Chilkoot Indian Association: trail building, funding for Alaska Arts Confluence to conduct community engagement
- Alaska Arts Confluence: community engagement
- James Corner Field Operations: working with artists and involved parties on trail design, guidance on master planning for waterfront
- ProHns: engineer trail and infrastructure design
- Parks and Recreation: liaison for project
- Haines Planning Commission: approval of plans
- Public: project input, ideas



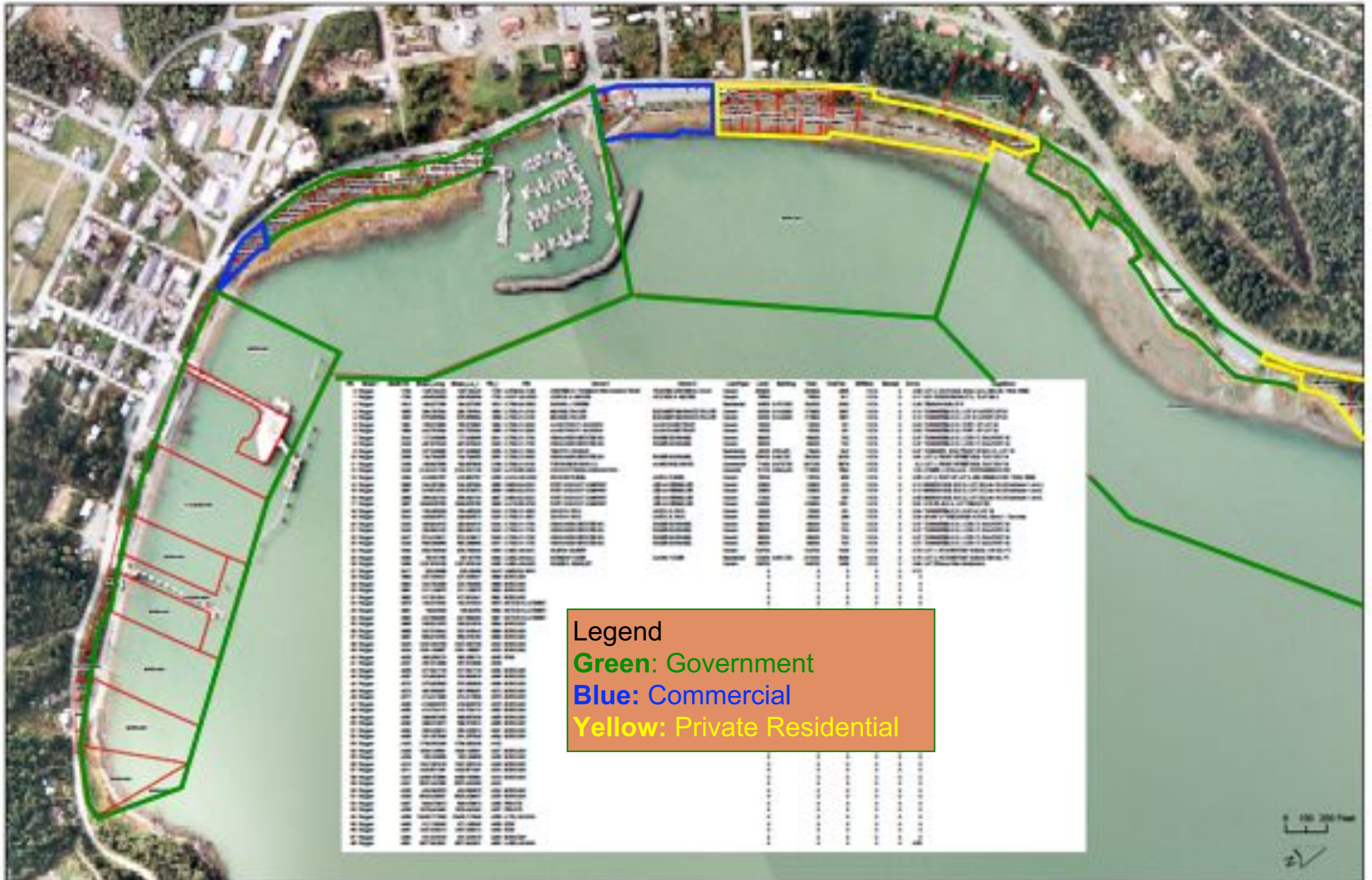
## THE VALUE OF COMMUNITY ENGAGEMENT

- Enlists new resources and allies
- Creates better communication
- Builds trust
- Improves overall outcomes as successful projects evolve into lasting collaborations



# COMMUNITY COLLABORATION PROCESS

- Portage Cove waterfront property owners were identified on parcel viewer provided by Haines Borough Planning Department



Legend  
**Green:** Government  
**Blue:** Commercial  
**Yellow:** Private Residential

## COORDINATED ACTION

- Engaged 39 individuals, including all 17 Portage Cove private property owners, in conversation about proposed project
- Informed property owners of known plans, timelines and meetings related to the project
- Documented people's thoughts, ideas, and concerns about the project
- Shared all input with the Borough and CIA

**Many recurring themes emerged from people's input,  
as well as a variety of unique insights**



## BUILDING CONSENSUS AND FINDING SOLUTIONS

- Widespread enthusiasm for the waterfront trail, better Tlingit Park access, and a new, bigger pavilion in Tlingit Park
- Desire to make Tlingit Park pavilion big enough to host birthday parties, live music, and provide more seating for 4th of July and other events
- Preference for a natural trail with a boardwalk where terrain dictates
- Desire for art in Tlingit Park and along waterfront trails





# POSSIBLE SOLUTIONS

- Front Street residents were in general consensus regarding making Front Street one-way, beginning at Canal Marine, allowing for bike/pedestrian traffic in other lane.
- Waterfront Trail could connect to this walking lane on Front Street.



## LOOKING AHEAD

- Inviting James Corner Field Operations to engage with involved parties and provide trail design
- Continued community engagement in design and implementation phases
- Prioritize local hires and buying from local suppliers
- Work toward a comprehensive waterfront plan
- Incorporate Percent for Art for municipal projects

Thank you to all the people who made themselves available to talk about the Portage Cove Trail and Tlingit Park concepts, to the Chilkoot Indian Association, and the Haines Borough for initiating this process and supporting open, community engagement in planning our beautiful waterfront for the enjoyment and many economic, social and environmental benefits the project will realize for years to come.

*This presentation made possible by funding from the Chilkoot Indian Association and National Endowment for the Arts.*

