


Final Engineer's Estimate

Project:	HB Clean Metal Storage Yard		
Owner:	Haines Borough		
Date:	2/27/2024		
Prepared By:	J. Spriggs		
Checked By:	L. Chambers		

Base Bid

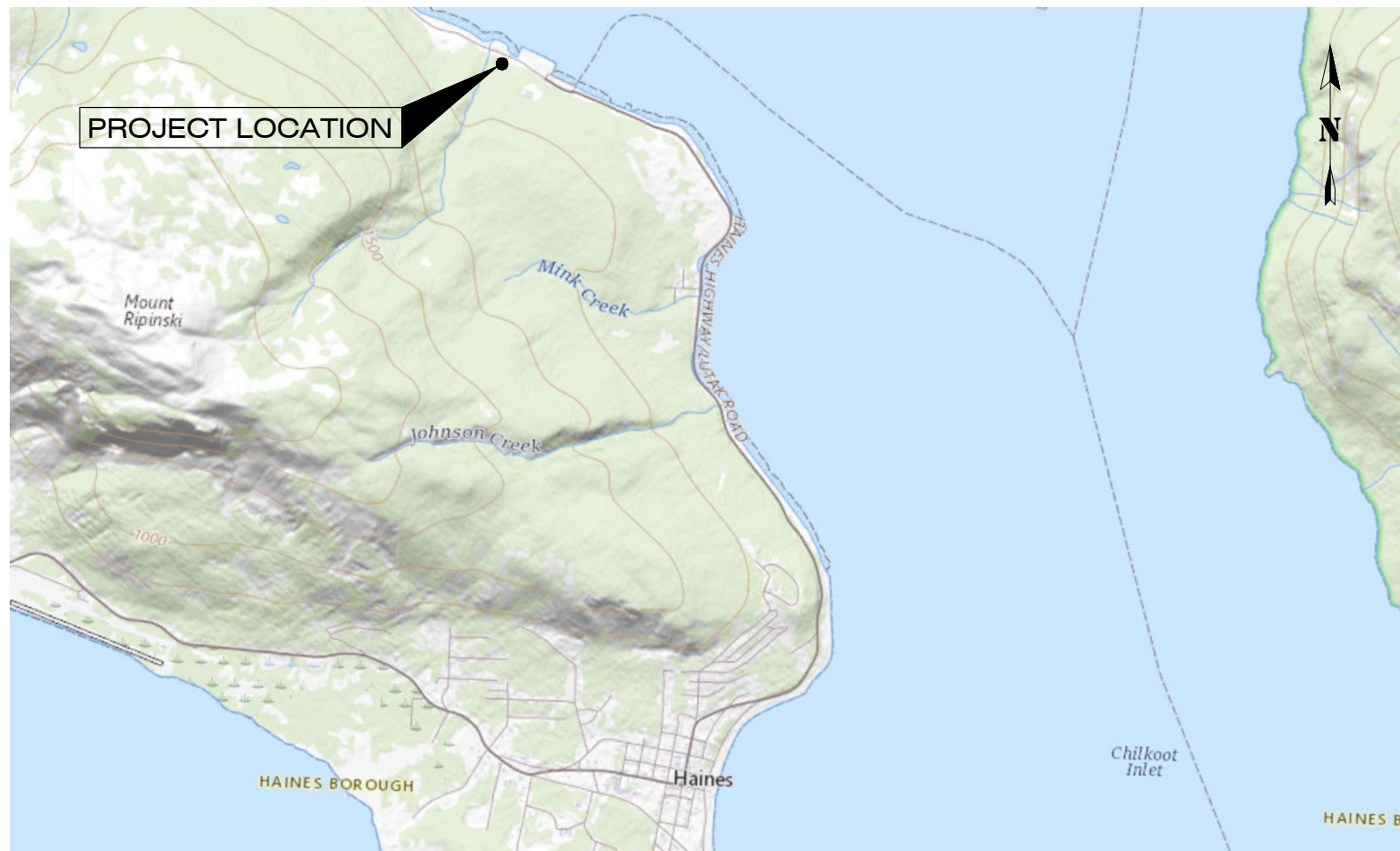
Pay Item	Pay Item Description	Pay Unit	Quantity	Unit Price	Amount
203.0003.0000	Unclassified Excavation	CY	1530	\$50.00	\$76,500.00
301.0002.00D1	Aggregate Base Course, Grading D-1	CY	316	\$140.00	\$44,240.00
303.2003.0000	Ditch Reconditioning	LF	1336	\$30.00	\$40,080.00
304.0002.000B	Subbase, Grading B	CY	928	\$90.00	\$83,520.00
401.0001.002B	HMA Type II; Class B	TON	179	\$300.00	\$53,700.00
401.0004.5834	Asphalt Binder, Grade PG 58-34	TON	11	\$2,100.00	\$23,100.00
603.0021.0018	Corrugated Polyethylene Pipe 18 Inch	LF	85	\$250.00	\$21,250.00
604.0005.000A	Inlet, Type IV with Oil-Water Separator	Each	2	\$6,000.00	\$12,000.00
607.0003.0000	Chain Link Fence	LF	474	\$75.00	\$35,550.00
607.0005.0000	Drive Gate	EACH	1	\$10,000.00	\$10,000.00
640.0001.0000	Mobilization and Demobilization	Lump Sum	All Req'd	\$40,000.00	\$40,000.00
642.0001.0000	Construction Surveying	Lump Sum	All Req'd	\$1,000.00	\$1,000.00
642.0014.0000	Construction Surveying by Directive	HR	30	\$150.00	\$4,500.00
643.0002.0000	Traffic Maintenance	Lump Sum	All Req'd	\$15,000.00	\$15,000.00
658.0001.0000	ESCP Without CGP Coverage	Lump Sum	All Req'd	\$1,000.00	\$1,000.00
658.0002.0000	ESCP Changes by Directive	Cont. Sum	All Req'd	\$10,000.00	\$10,000.00
				Base Bid Total =	\$471,440.00
				20% Contingency=	\$565,728.00

HAINES BOROUGH CLEAN METAL STAGING YARD

P/W #

HAINES BOROUGH, ALASKA

SHEET INDEX	
SHEET NO.	DESCRIPTION
1	COVER SHEET
2	LEGEND, ABBREVIATIONS & GENERAL NOTES
3	EXISTING SITE
4	TYPICAL SECTIONS
5	SITE PLAN VIEW
6	PAD PLAN VIEW
7	PROFILE

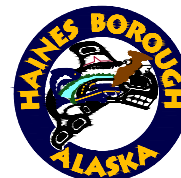


35%
DRAFT
FOR REVIEW ONLY

RECORD OF REVISIONS			
No.	DATE	DESCRIPTION	BY



DRAWN BY: J. SPRIGGS
 DESIGNED BY: J. SPRIGGS
 CHECKED BY: L. CHAMBERS
 219 MAIN ST #13
 HAINES, AK 99827
 1945 ALEX HOLDEN WAY #101
 JUNEAU, AK 99801
 (907) 780-4004
 solutions@proHNS.com
 www.proHNS.com



HAINES BOROUGH CLEAN METAL STAGING YARD

P/W #

COVER

SHEET NUMBER	
1	OF
7	

LEGEND

DESCRIPTION	EXISTING	REMOVE	PROPOSED
CUT LIMITS			- - - - -
FENCE			- x - x - x - x - x -
FILL LIMITS		
GRAVEL ROAD			- - - - -
PROPERTY LINE	- - - - -		

ABBREVIATIONS



AC	ASPHALT CONCRETE
ACP	ASBESTOS CEMENT PIPE
BOP	BEGINNING OF PROJECT
BOW	BOTTOM OF WALL
BVC	BEGIN VERTICAL CURVE
CB	CATCH BASIN
CL	CENTERLINE
CMP	CORRUGATED METAL PIPE
CONC	CONCRETE
CPP	CORRUGATED POLYETHYLENE PIPE
CTE	CONNECT TO EXISTING
DIP	DUCTILE IRON PIPE
DIA	DIAMETER
EL	ELEVATION
EOP	END OF PROJECT
EVC	END VERTICAL CURVE
EX	EXISTING
FG	FINISHED GRADE
FH	FIRE HYDRANT
GV	GATE VALVE
HB	HAINES BOROUGH
IE	INVERT ELEVATION
INV	INVERT
LT	LEFT
LVC	LENGTH OF VERTICAL CURVE
MH	MANHOLE
MIN	MINIMUM
MTE	MATCH TO EXISTING
NO	NUMBER
NTS	NOT TO SCALE
OHE	OVERHEAD ELECTRIC
PC	POINT OF CURVATURE
PT	POINT OF TANGENT
PVC	POLYVINYL CHLORIDE PIPE
PVI	POINT OF VERTICAL INTERSECTION
ROW	RIGHT-OF-WAY
RP	RADIUS POINT
RT	RIGHT
SDMH	STORM DRAIN MANHOLE
SSMH	SANITARY SEWER MANHOLE
STA	STATION
STD	STANDARD
TBC	TOP BACK OF CURB
TBG	TOP BACK OF GUTTER
TBM	TEMPORARY BENCHMARK
TP	TOP OF PAVEMENT
TYP	TYPICAL
UNK	UNKNOWN
VPC	VERTICAL POINT OF CURVATURE
VPI	VERTICAL POINT OF INTERSECTION
VPT	VERTICAL POINT OF TANGENCY

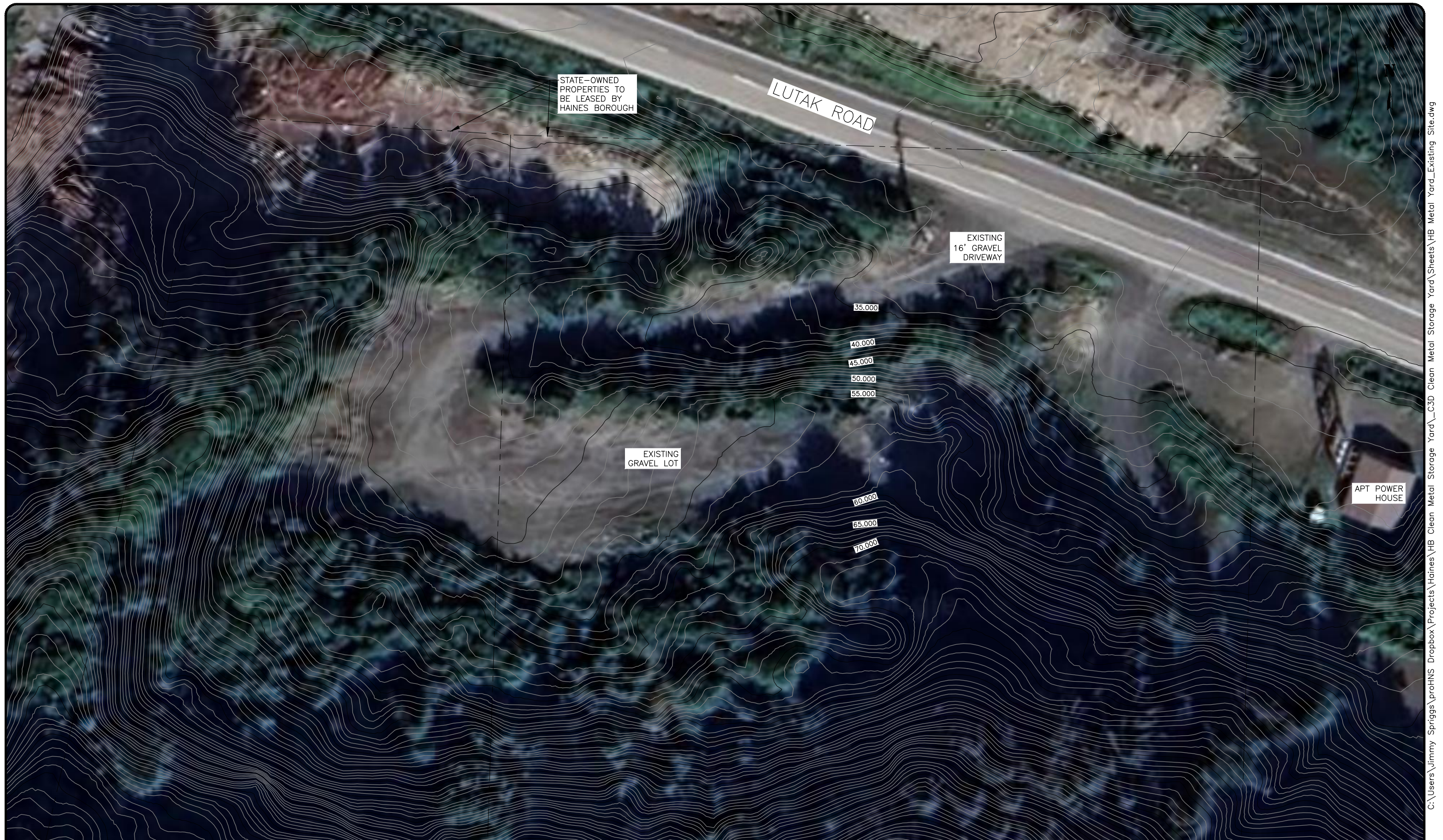
GENERAL NOTES

1. ALL WORK FOR THESE PLANS SHALL BE CONDUCTED IN STRICT ACCORDANCE WITH ALL APPLICABLE LOCAL, STATE AND FEDERAL LAWS AND STANDARDS.
2. LOCATIONS AND ELEVATION OF EXISTING UNDERGROUND WATER, SEWER, POWER, TELEPHONE AND CABLE TELEVISION SHOWN ON THE PLANS WERE DERIVED FROM HAINES BOROUGH AS-BUILTS AND FIELD LOCATES. THE ACTUAL LOCATION OF UTILITIES MAY VARY FROM THOSE SHOWN. THE CONTRACTOR IS RESPONSIBLE FOR LOCATING, PROTECTING AND MAINTAINING EXISTING UTILITIES THROUGHOUT THE CONSTRUCTION OF THE PROJECT. ANY DAMAGE TO UTILITIES DURING CONSTRUCTION SHALL BE PAID FOR BY THE CONTRACTOR AND SHALL BE CONSIDERED INCIDENTAL TO THE CONTRACT. THE CONTRACTOR SHALL CONTACT AND REQUEST UTILITY LOCATES, AT A MINIMUM, FROM THE FOLLOWING PRIOR TO BEGINNING EARTH DISTURBING ACTIVITIES:
 - A) HAINES BOROUGH PUBLIC FACILITIES, 907-766-6414.
 - B) ALASKA POWER & TELEPHONE(AP&T), 907-766-6500.
 - C) HAINES CABLE TV, 907-766-2337.
3. A GEOTECHNICAL INVESTIGATION WAS NOT PERFORMED AS PART OF THIS DESIGN. HARDPAN, CLAY, GROUNDWATER, LARGE BOULDERS, BEDROCK, STUMPS, LOGS, ORGANICS, AND OTHER NATIVE MATERIALS MAY BE ENCOUNTERED AT VARIOUS DEPTHS DURING TRENCHING AND SITE GRADING OPERATIONS.
4. THE TOTAL DISTURBED AREA FOR THIS PROJECT IS ANTICIPATED TO BE LESS THAN ONE ACRE.
5. ALL DISTURBED AREAS SHALL BE RESTORED TO EXISTING CONDITIONS AND GRADES, AND STABILIZED WITH AN APPROVED HYDRAULIC GROWTH MEDIUM AND GRASS SEED UNLESS OTHERWISE SHOWN ON THE PLANS.
6. CONTRACTOR SHALL ENSURE GARBAGE PICKUP, PRIVATE AND BUSINESS DELIVERIES, AND DAILY MAIL SERVICE WILL BE UNINTERRUPTED TO ALL BUSINESS AND RESIDENCES AFFECTED BY THIS PROJECT.
7. THE CONTRACTOR SHALL NOTIFY EACH PROPERTY OWNER OF DRIVEWAY CLOSURE 48 HOURS PRECEDING THE DAY THE DRIVEWAY IS TO BE CLOSED TO VEHICULAR ACCESS. THE PROPERTY OWNER SHALL BE INFORMED OF THE PERIOD OF TIME THE CLOSURE WILL BE IN EFFECT. NO DRIVEWAY CLOSURES WILL BE PERMITTED UNTIL THIS REQUIREMENT HAS BEEN MET TO THE SATISFACTION OF THE ENGINEER.
8. THE CONTRACTOR SHALL NOT STORE MATERIALS OR EQUIPMENT, OR OPERATE EQUIPMENT WITH ITS TRACKS OR WHEELS PLACED ON PRIVATE PROPERTY, WITHOUT THE APPROVAL OF THE PROPERTY OWNER.
9. THE PLAN DRAWINGS DO NOT SHOW ALL PLANTINGS, AND OTHER LANDSCAPING THAT WILL BE ENCOUNTERED DURING CONSTRUCTION ACTIVITIES. NO PLANTINGS OR LANDSCAPING ARE TO BE REMOVED OR DAMAGED, UNLESS SHOWN ON THE DRAWINGS OR DIRECTED BY THE ENGINEER.
10. ALL ITEMS DESIGNATED TO BE REMOVED SHALL BE DISPOSED OF OFF-SITE, EXCEPT AS NOTED IN THE CONTRACT DOCUMENTS.
11. ALL OTHER MATERIALS TO BE REMOVED AND DISPOSED OF SHALL BECOME THE PROPERTY OF THE CONTRACTOR, INCLUDING CONCRETE, ASPHALT, UNSUITABLE SOILS AND ETC.



STANDARD SPECIFICATION

PERFORM THE WORK SHOWN BY THESE PLANS IN ACCORDANCE WITH THE ALASKA DEPARTMENT OF TRANSPORTATION AND PUBLIC FACILITIES 2020 STANDARD SPECIFICATIONS FOR HIGHWAY CONSTRUCTION AND THE PROJECT MANUAL.

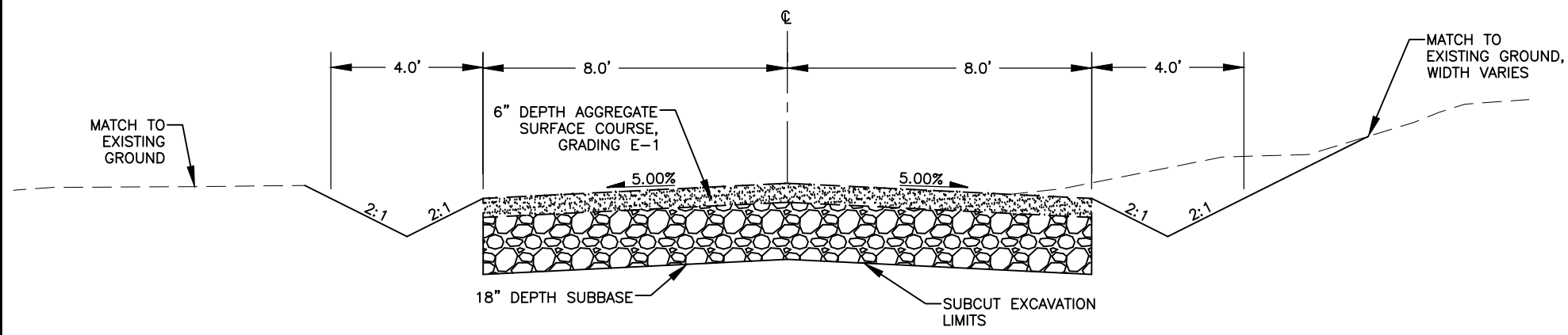
<p style="font-size: 2em; transform: rotate(-45deg); opacity: 0.5;">35% DRAFT FOR REVIEW ONLY</p>	RECORD OF REVISIONS				 219 MAIN ST #13 HAINES, AK 99827 1945 ALEX HOLDEN WAY #101 JUNEAU, AK 99801 (907) 780-4004 solutions@proHNS.com www.proHNS.com		<p style="font-size: 1.2em; margin: 0;">HAINES BOROUGH CLEAN METAL STAGING YARD</p> <p style="font-size: 0.8em; margin-top: 10px;">P/W #</p>	<p style="font-size: 1.5em; margin: 0;">LEGEND ABBREVIATIONS & GENERAL NOTES</p>	SHEET NUMBER
	No.	DATE	DESCRIPTION	BY					2
									OF
				7					



C:\Users\jimmy Spriggs\proHNS Dropbox\Projects\Haines\HB Clean Metal Storage Yard\C3D Clean Metal Storage Yard_Existing Site.dwg

<p style="transform: rotate(-45deg); font-weight: bold;">35% DRAFT FOR REVIEW ONLY</p>	RECORD OF REVISIONS				 <p style="font-size: x-small;">CERTIFICATE OF AUTHORIZATION #100662</p>		<p style="font-weight: bold; font-size: large;">HAINES BOROUGH CLEAN METAL STAGING YARD</p> <p style="font-size: small; margin-top: 10px;">P/W #</p>	<p style="font-size: x-large; font-weight: bold;">EXISTING SITE</p>	SHEET NUMBER											
	No.	DATE	DESCRIPTION	BY					<table border="1" style="width: 100%; border-collapse: collapse; font-size: x-small;"> <tr><td style="font-size: x-x-small;">DRAWN BY:</td><td>J. SPRIGGS</td></tr> <tr><td style="font-size: x-x-small;">DESIGNED BY:</td><td>J. SPRIGGS</td></tr> <tr><td style="font-size: x-x-small;">CHECKED BY:</td><td>L. CHAMBERS</td></tr> <tr><td colspan="2" style="font-size: x-x-small;">219 MAIN ST #13 HAINES, AK 99827</td></tr> <tr><td colspan="2" style="font-size: x-x-small;">1945 ALEX HOLDEN WAY #101 JUNEAU, AK 99801 907-780-4004</td></tr> <tr><td colspan="2" style="font-size: x-x-small;">solutions@proHNS.com www.proHNS.com</td></tr> </table>	DRAWN BY:	J. SPRIGGS	DESIGNED BY:	J. SPRIGGS	CHECKED BY:	L. CHAMBERS	219 MAIN ST #13 HAINES, AK 99827		1945 ALEX HOLDEN WAY #101 JUNEAU, AK 99801 907-780-4004		solutions@proHNS.com www.proHNS.com
DRAWN BY:	J. SPRIGGS																			
DESIGNED BY:	J. SPRIGGS																			
CHECKED BY:	L. CHAMBERS																			
219 MAIN ST #13 HAINES, AK 99827																				
1945 ALEX HOLDEN WAY #101 JUNEAU, AK 99801 907-780-4004																				
solutions@proHNS.com www.proHNS.com																				
3																				
OF																				
7																				

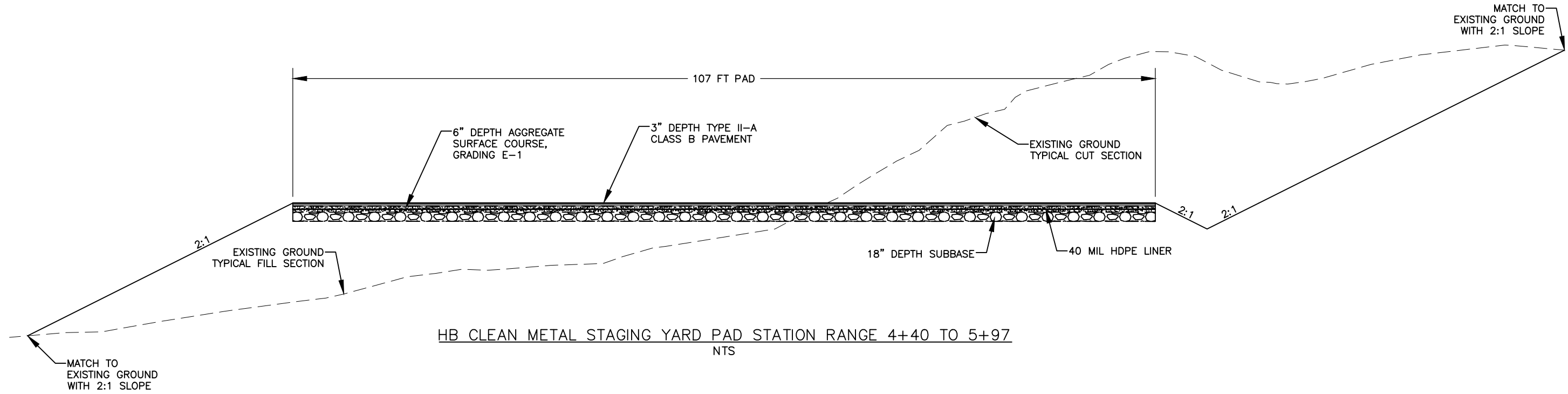
March 1, 2024



HB CLEAN METAL STAGING YARD DRIVEWAY STATION RANGE BOP TO 4+40
NTS

TYPICAL SECTION NOTES

1. SIDE SLOPES, WIDTHS AND GRADES MAY VARY AT SOME LOCATIONS, SEE GRADING SHEETS FOR ADDITIONAL INFORMATION.
2. RECONDITIONED DRAINAGE DITCHES MUST MEET MINIMUM DIMENSIONS AND MAXIMUM SLOPES AS SHOWN IN TYPICAL SECTIONS. IF EXISTING DITCHES DO NOT EXCEED MAXIMUM SLOPES AND MEET MINIMUM DIMENSIONS THAN RECONDITIONING MAY NOT BE REQUIRED, AS DETERMINED BY THE ENGINEER.
3. ADDITIONAL EXCAVATION BELOW THE NEATLINE SUBCUT LEVEL MAY BE REQUIRED BY THE ENGINEER IF ORGANIC OR OTHER UNSUITABLE MATERIALS ARE FOUND AT OR NEAR THE PLANNED SUBCUT LEVEL. USABLE MATERIAL FROM EXCAVATION SHALL BE USED TO BACKFILL THE ADDITIONAL AREAS OF EXCAVATION. BACKFILLING WITH USABLE MATERIAL FROM EXCAVATION WILL BE CONSIDERED INCIDENTAL TO OTHER WORK.
4. PROOF ROLLING BOTTOM OF SUBCUT EXCAVATION LIMITS SHALL BE PERFORMED USING A MINIMUM 10-TON SELF-PROPELLED VIBRATORY COMPACTOR. A MINIMUM OF TWO (2) PASSES (ONE PASS EQUALS DOWN AND BACK) SHALL BE MADE OVER THE SUBCUT SOILS OR AS APPROVED BY THE ENGINEER.
9. PLACE AND GRADE SURFACE COURSE GRADING, E-1 USED TO MATCH TO EXISTING GROUND TO PROVIDE A SMOOTH, WELL DRAINED TRANSITION TO EXISTING GRADES, AS DIRECTED BY THE ENGINEER.



HB CLEAN METAL STAGING YARD PAD STATION RANGE 4+40 TO 5+97
NTS

RECORD OF REVISIONS			
No.	DATE	DESCRIPTION	BY

proHNS LLC
 CERTIFICATE OF AUTHORIZATION #100662
 219 MAIN ST #13
 HAINES, AK 99827
 1945 ALEX HOLDEN WAY #101
 JUNEAU, AK 99801
 (907) 780-4004
 solutions@proHNS.com
 www.proHNS.com

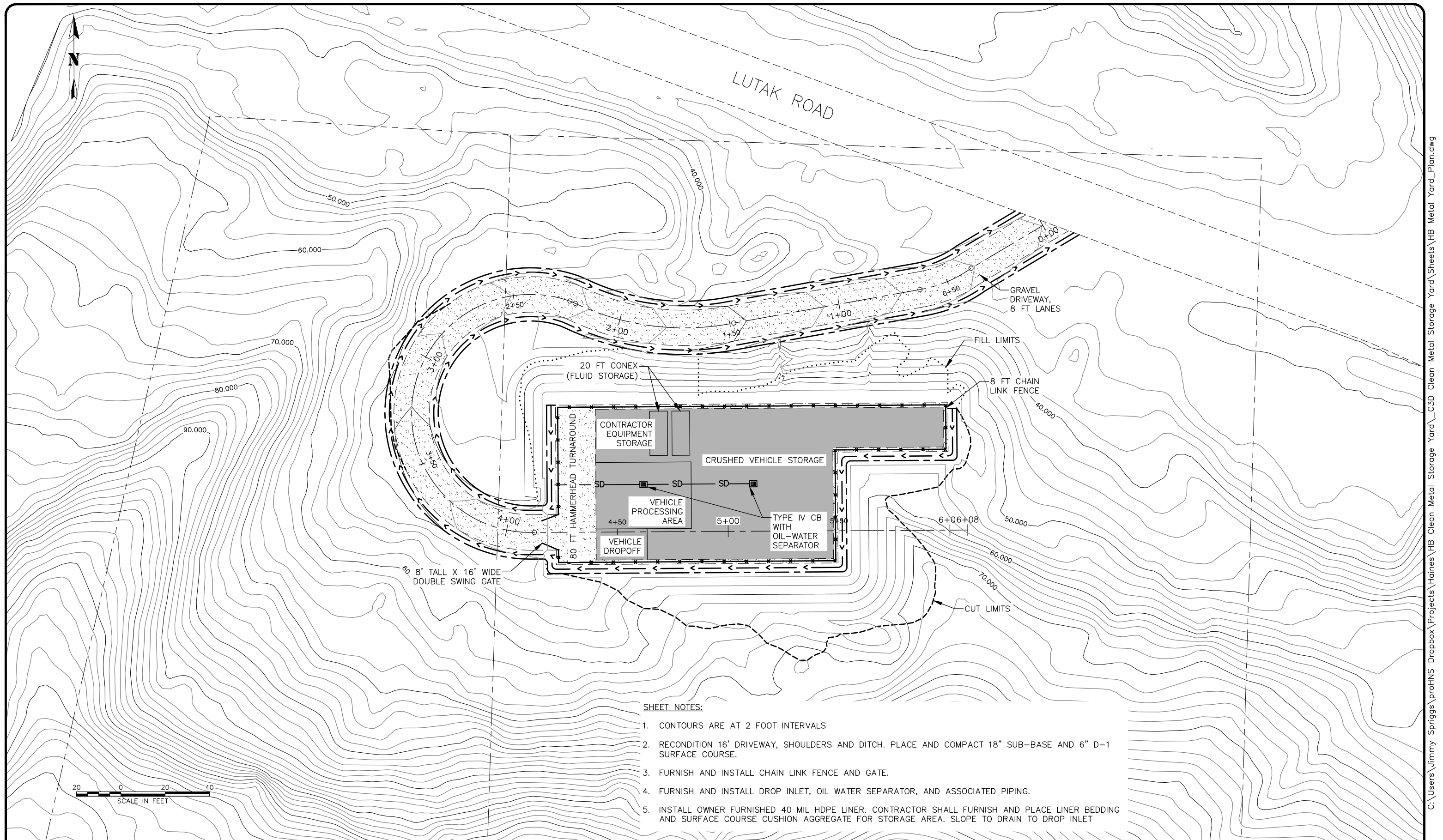
DRAWN BY: J. SPRIGGS
 DESIGNED BY: J. SPRIGGS
 CHECKED BY: L. CHAMBERS

HAINES BOROUGH CLEAN METAL STAGING YARD
 P/W #

TYPICAL SECTION

SHEET NUMBER
4
OF
7

35%
DRAFT
FOR REVIEW ONLY



SHEET NOTES:

1. CONTOURS ARE AT 2 FOOT INTERVALS
2. RECONDITION 16' DRIVEWAY, SHOULDERS AND DITCH. PLACE AND COMPACT 18" SUB-BASE AND 6" D-1 SURFACE COURSE.
3. FURNISH AND INSTALL CHAIN LINK FENCE AND GATE.
4. FURNISH AND INSTALL DROP INLET, OIL WATER SEPARATOR, AND ASSOCIATED PIPING.
5. INSTALL OWNER FURNISHED 40 MIL HDPE LINER. CONTRACTOR SHALL FURNISH AND PLACE LINER BEDDING AND SURFACE COURSE CUSHION AGGREGATE FOR STORAGE AREA. SLOPE TO DRAIN TO DROP INLET

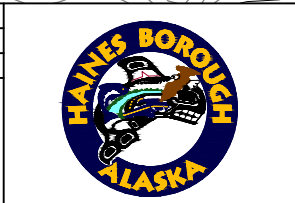
<p style="font-size: 2em; font-weight: bold;">35% DRAFT</p> <p style="font-size: 0.8em;">FOR REVIEW ONLY</p>	RECORD OF REVISIONS			
	No.	DATE	DESCRIPTION	BY

proHNS LLC

CERTIFICATE OF AUTHORIZATION
#100662

DRAWN BY: J. SPRIGGS
DESIGNED BY: J. SPRIGGS
CHECKED BY: L. CHAMBERS

219 MAIN ST #13
HAINES, AK 99827
1945 ALEX HOLDEN WAY #101
JUNEAU, AK 99801
907-780-4004
solutions@proHNS.com
www.proHNS.com

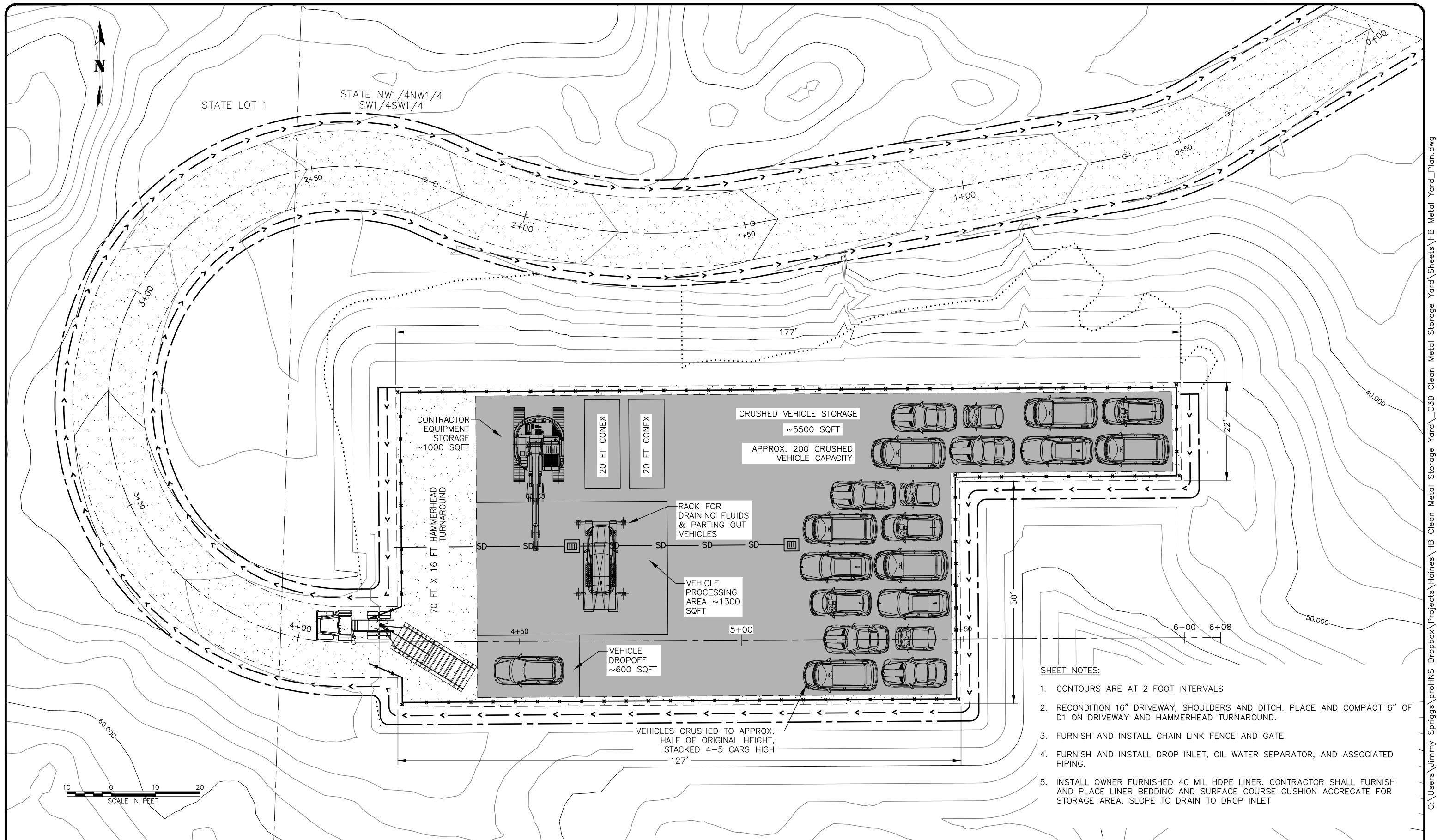


HAINES BOROUGH CLEAN
METAL STAGING YARD

P/W #

PLAN VIEW

SHEET NUMBER
5
OF
7



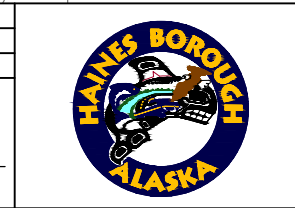
- SHEET NOTES:**
1. CONTOURS ARE AT 2 FOOT INTERVALS
 2. RECONDITION 16" DRIVEWAY, SHOULDERS AND DITCH. PLACE AND COMPACT 6" OF D1 ON DRIVEWAY AND HAMMERHEAD TURNAROUND.
 3. FURNISH AND INSTALL CHAIN LINK FENCE AND GATE.
 4. FURNISH AND INSTALL DROP INLET, OIL WATER SEPARATOR, AND ASSOCIATED PIPING.
 5. INSTALL OWNER FURNISHED 40 MIL HDPE LINER. CONTRACTOR SHALL FURNISH AND PLACE LINER BEDDING AND SURFACE COURSE CUSHION AGGREGATE FOR STORAGE AREA. SLOPE TO DRAIN TO DROP INLET

<p>35% DRAFT FOR REVIEW ONLY</p>	RECORD OF REVISIONS			
	No.	DATE	DESCRIPTION	BY

proHNS LLC
CERTIFICATE OF AUTHORIZATION
#100662

DRAWN BY: J. SPRIGGS
DESIGNED BY: J. SPRIGGS
CHECKED BY: L. CHAMBERS

219 MAIN ST #13
HAINEs, AK 99827
1945 ALEX HOLDEN WAY #101
JUNEAU, AK 99801
907-780-4004
solutions@proHNS.com
www.proHNS.com

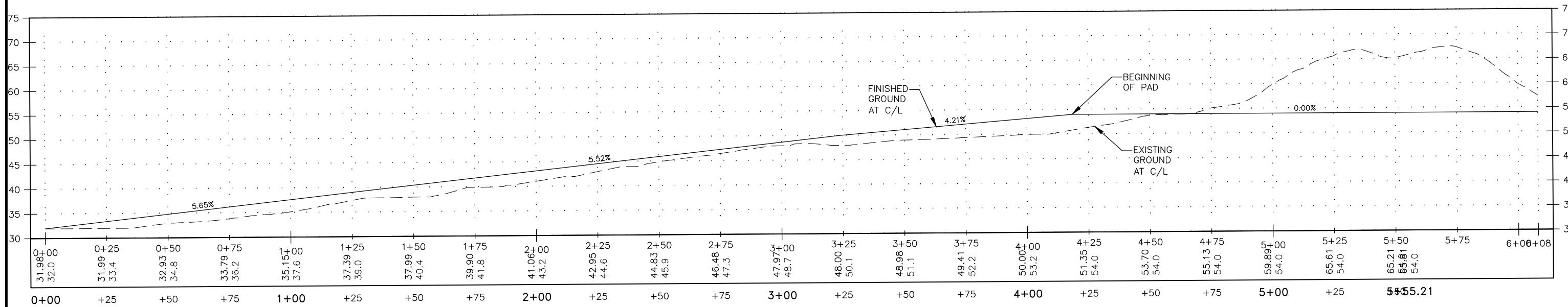


**HAINEs BOROUGH CLEAN
METAL STAGING YARD**

P/W #

PAD VIEW

SHEET NUMBER
6
OF
7

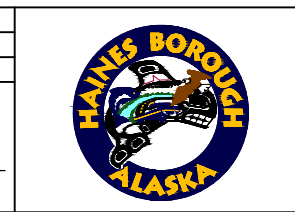


35%
DRAFT
FOR REVIEW ONLY

RECORD OF REVISIONS			
No.	DATE	DESCRIPTION	BY



DRAWN BY: J. SPRIGGS
DESIGNED BY: J. SPRIGGS
CHECKED BY: L. CHAMBERS
219 MAIN ST #13
HAINES, AK 99827
1945 ALEX HOLDEN WAY #101
JUNEAU, AK 99801
907-780-4004
solutions@proHNS.com
www.proHNS.com



HAINES BOROUGH CLEAN METAL STAGING YARD
P/W #

PROFILE

SHEET NUMBER	
7	OF
7	