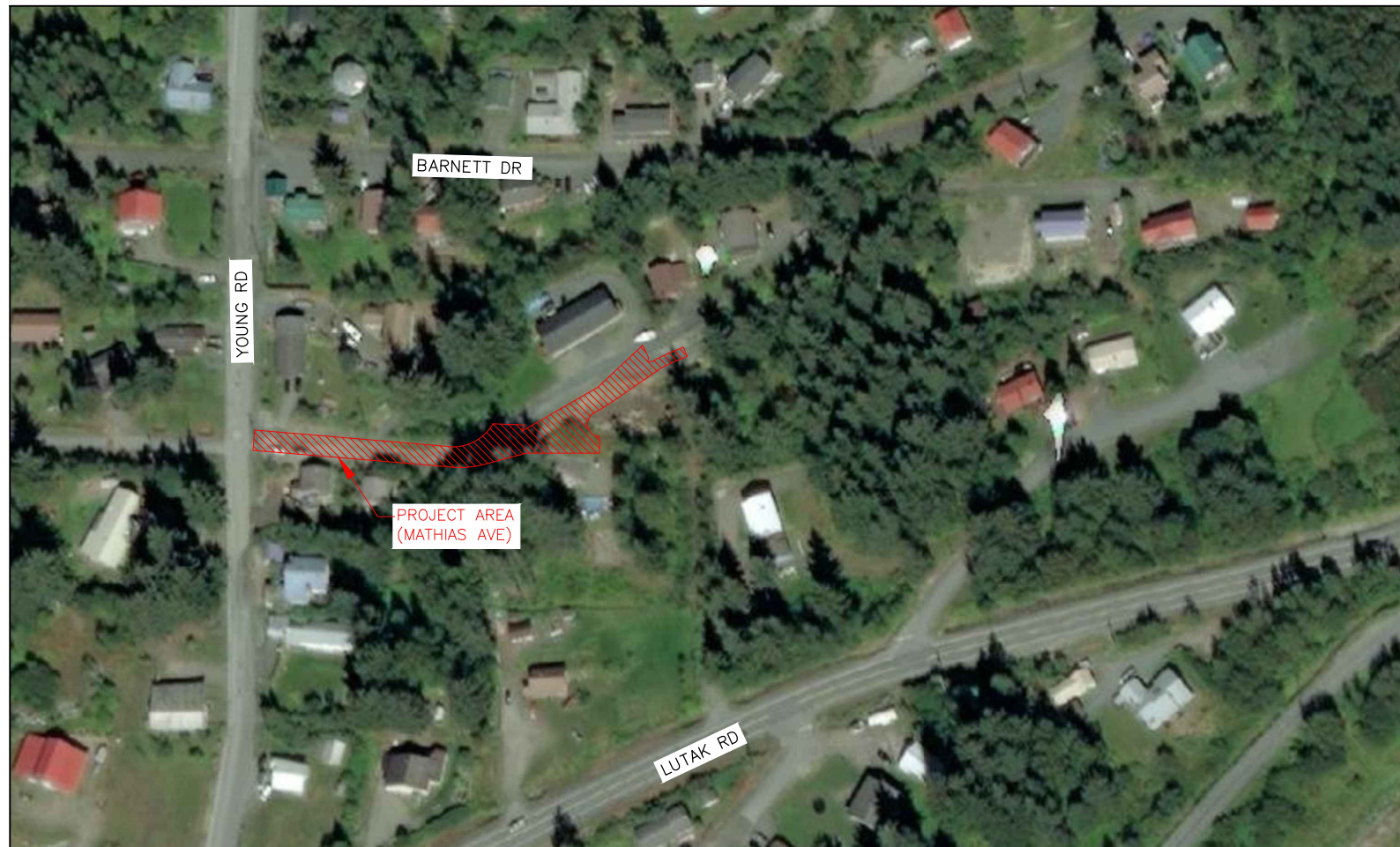


# MATHIAS AVENUE IMPROVEMENTS HAINES, AK

PREPARED FOR:  
HAINES BOROUGH, ALASKA



**PROJECT LOCATION MAP**  
NTS



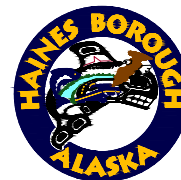
SHEET INDEX	
SHEET NO.	DESCRIPTION
1	COVER SHEET
2	LEGEND, ABBREVIATIONS & GENERAL NOTES
3	CONCEPTUAL OVERVIEW
4	TYPICAL SECTION
5	PLAN VIEW – MATHIAS AVE – BOP TO 3+60
6	PLAN VIEW – MATHIAS AVE – 3+60 TO EOP
7	CROSS SECTION @ STATION 4+40
8	CROSS SECTION @ STATION 4+90
9	CROSS SECTION @ STATION 5+40
10	CROSS SECTION @ STATION 5+90
11	CROSS SECTION @ STATION 6+30
12	PROFILE VIEW – MATHIAS AVE
13	PROFILE VIEW – TURN-AROUND
14	SURVEY CONTROL SHEET (TO BE ADDED)

35%  
DRAFT

RECORD OF REVISIONS			
No.	DATE	DESCRIPTION	BY



DRAWN BY: C. BYDLON  
DESIGNED BY: C. BYDLON  
CHECKED BY: G. GLADSJO  
219 MAIN ST #13  
HAINES, AK 99827  
1945 ALEX HOLDEN WAY #101  
JUNEAU, AK 99801  
907-780-4004  
solutions@proHNS.com  
www.proHNS.com



MATHIAS AVENUE  
IMPROVEMENTS

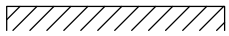
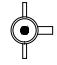



COVER SHEET

SHEET NUMBER
1
OF
14

## LEGEND

## ABBREVIATIONS

## GENERAL NOTES

DESCRIPTION	EXISTING	PROPOSED
BUILDING		
CULVERT	— SD — SD —	— SD — SD —
EDGE OF GRAVEL	—————	<b>HATCHED AREA</b>
FIRE HYDRANT		
GRADING (CUT)	- - - - -	- - - - -
GRADING (FILL)	.....	.....
OVERHEAD POWER	— OHE — OHE —	
PROPERTY LINE	— - - - -	
RIGHT-OF-WAY	— - - - -	
SANITARY SEWER CLEANOUT	○	
SANITARY SEWER PIPE	— PIPE SIZE & TYPE —	
SANITARY SEWER MANHOLE		
SIGN	— T —	
STORM DRAIN PIPE	[	
UNDERGROUND PIPE CAP	— PIPE SIZE & TYPE —	— PIPE SIZE & TYPE —
UTILITY POLE		
WATER LINE PIPE	— PIPE SIZE & TYPE —	— PIPE SIZE & TYPE —
WATER VALVE BOX		

AC	ASPHALT CEMENT
BOP	ASBESTOS CEMENT PIPE
BOP	BEGINNING OF PROJECT
BTM	BOTTOM
CB	CATCH BASIN
C/L	CENTERLINE
CMP	CORRUGATED METAL PIPE
CONC	CONCRETE
CPP	CORRUGATED POLYETHYLENE PIPE
CTE	CONNECT TO EXISTING
DI	DUCTILE IRON
DIA	DIAMETER
EL	ELEVATION
EX	EXISTING
FG	FINISHED GRADE
FH	FIRE HYDRANT
GV	GATE VALVE
INV	INVERT
LT	LEFT
MH	MANHOLE
MIN	MINIMUM
MTE	MATCH TO EXISTING
NTS	NOT TO SCALE
RT	RIGHT
ROW	RIGHT-OF-WAY
STA	STATION
STD	STANDARD
TYP	TYPICAL


1. ALL WORK FOR THESE PLANS SHALL BE CONDUCTED IN STRICT ACCORDANCE WITH ALL APPLICABLE LOCAL, STATE AND FEDERAL LAWS AND STANDARDS.
2. LOCATIONS AND ELEVATION OF EXISTING UNDERGROUND WATER, SEWER, POWER, TELEPHONE AND CABLE TELEVISION SHOWN ON THE PLANS WERE DERIVED FROM HAINES BOROUGH AS-BUILTS AND FIELD LOCATES. THE ACTUAL LOCATION OF UTILITIES MAY VARY FROM THOSE SHOWN. THE CONTRACTOR IS RESPONSIBLE FOR LOCATING, PROTECTING AND MAINTAINING EXISTING UTILITIES THROUGHOUT THE CONSTRUCTION OF THE PROJECT. ANY DAMAGE TO UTILITIES DURING CONSTRUCTION SHALL BE PAID FOR BY THE CONTRACTOR AND SHALL BE CONSIDERED INCIDENTAL TO THE CONTRACT. THE CONTRACTOR SHALL CONTACT AND REQUEST UTILITY LOCATES FROM THE FOLLOWING PRIOR TO BEGINNING EARTH DISTURBING ACTIVITIES:
  - A) HAINES BOROUGH PUBLIC FACILITIES, 907-766-6414.
  - B) ALASKA POWER & TELEPHONE(AP&T), 907-766-6500.
  - C) HAINES CABLE TV, 907-766-2337.
3. A GEOTECHNICAL INVESTIGATION WAS NOT PERFORMED AS PART OF THIS DESIGN. HARDPAN, CLAY, GROUNDWATER, LARGE BOULDERS, BEDROCK, STUMPS, LOGS, ORGANICS, AND OTHER NATIVE MATERIALS MAY BE ENCOUNTERED AT VARIOUS DEPTHS DURING TRENCHING AND SITE GRADING OPERATIONS.
4. THE TOTAL DISTURBED AREA FOR THIS PROJECT IS ANTICIPATED TO BE LESS THAN ONE ACRE.
5. ALL DISTURBED AREAS SHALL BE RESTORED TO EXISTING CONDITIONS AND GRADES, UNLESS OTHERWISE SHOWN ON THE PLANS.
6. CONTRACTOR SHALL ENSURE GARBAGE PICKUP, PRIVATE AND BUSINESS DELIVERIES, AND DAILY MAIL SERVICE WILL BE UNINTERRUPTED TO ALL BUSINESS AND RESIDENCES AFFECTED BY THIS PROJECT.
7. THE CONTRACTOR SHALL NOTIFY EACH PROPERTY OWNER OF DRIVEWAY CLOSURE 48 HOURS PRECEDING THE DAY THE DRIVEWAY IS TO BE CLOSED TO VEHICULAR ACCESS. THE PROPERTY OWNER SHALL BE INFORMED OF THE PERIOD OF TIME THE CLOSURE WILL BE IN EFFECT. NO DRIVEWAY CLOSURES WILL BE PERMITTED UNTIL THIS REQUIREMENT HAS BEEN MET TO THE SATISFACTION OF THE ENGINEER.
8. THE CONTRACTOR SHALL NOT STORE MATERIALS OR EQUIPMENT, OR OPERATE EQUIPMENT WITH ITS TRACKS OR WHEELS PLACED ON PRIVATE PROPERTY, WITHOUT THE APPROVAL OF THE PROPERTY OWNER.

## TRAFFIC CONTROL NOTES

1. ALL TRAFFIC TO BE CONTROLLED PER REQUIREMENTS OF THE ALASKA TRAFFIC MANUAL, U.S. DEPARTMENT OF TRANSPORTATION "MANUAL ON UNIFORM TRAFFIC CONTROL DEVICES" AND THE ALASKA SUPPLEMENT.
  2. ROAD CLOSURES WILL NOT BE PERMITTED FOR THIS PROJECT.
- A MINIMUM OF ONE LANE (10' MINIMUM WIDTH) SHALL BE KEPT OPEN TO VEHICULAR TRAFFIC AT ALL TIMES, EXCEPT A FIVE (5) MINUTE MAXIMUM STOPPAGE TO VEHICULAR TRAFFIC WILL BE PERMITTED, WITH NO MORE THAN ONE TRAFFIC STOPPAGE PER HOUR.
3. VEHICLE ACCESS MAY BE PROVIDED VIA THE EXISTING ROAD ALIGNMENT OR THE NEW ROAD ALIGNMENT DURING CONSTRUCTION. THE CONTRACTOR SHALL PROVIDE APPROPRIATE TRAFFIC CONTROL DEVICES AND SIGNAGE.
  4. THE CONTRACTOR WILL NOT BE PERMITTED TO OBSTRUCT VEHICULAR TRAFFIC BETWEEN THE HOURS OF 5:00PM AND 8:00AM SEVEN DAYS A WEEK. DURING THIS PERIOD, ONE LANE (10' MINIMUM WIDTH) SHALL BE OPEN TO VEHICULAR TRAFFIC.
  5. NOTIFICATION OF WORK THAT MAY IMPEDE TRAFFIC MUST BE PROVIDED TO THE HB PUBLIC WORKS DEPARTMENT, HB POLICE DEPARTMENT, HAINES VOLUNTEER FIRE DEPARTMENT, CHILKOOT INDIAN ASSOCIATION, ALASKA DOT&PF HAINES M&O FOREMAN, AND THE GENERAL PUBLIC A MINIMUM OF 72 HOURS IN ADVANCE OF IMPLEMENTING TRAFFIC CONTROL.
  6. PROVIDE ACCESS FOR EMERGENCY VEHICLES AT ALL TIMES.

35%  
DRAFT

RECORD OF REVISIONS			
No.	DATE	DESCRIPTION	BY



DRAWN BY: C. BYDLON	DESIGNED BY: C. BYDLON
CHECKED BY: G. GLADSJO	219 MAIN ST #13 HAINES, AK 99827
1945 ALEX HOLDEN WAY #101 JUNEAU, AK 99801 907-780-4004	
solutions@proHNS.com www.proHNS.com	

CERTIFICATE OF AUTHORIZATION #100662



MATHIAS AVENUE  
IMPROVEMENTS

----

LEGEND, ABBREVIATIONS  
& GENERAL NOTES

SHEET NUMBER
2
OF
14

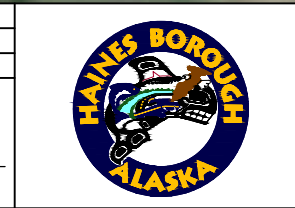


C:\Users\Chris\proHNS Dropbox\Projects\Haines\Mathias Avenue\Mathias C3D\Sheets\Mathias\_2023\_EXISTING CONDITIONS.dwg

RECORD OF REVISIONS			
No.	DATE	DESCRIPTION	BY

**proHNS LLC**  
 CERTIFICATE OF AUTHORIZATION  
 #100662

DRAWN BY: C. BYDLON  
 DESIGNED BY: C. BYDLON  
 CHECKED BY: G. GLADYSJO  
 219 MAIN ST #13  
 HAINES, AK 99827  
 1945 ALEX HOLDEN WAY #101  
 JUNEAU, AK 99801  
 907-780-4004  
 solutions@proHNS.com  
 www.proHNS.com



**MATHIAS AVENUE IMPROVEMENTS**

----

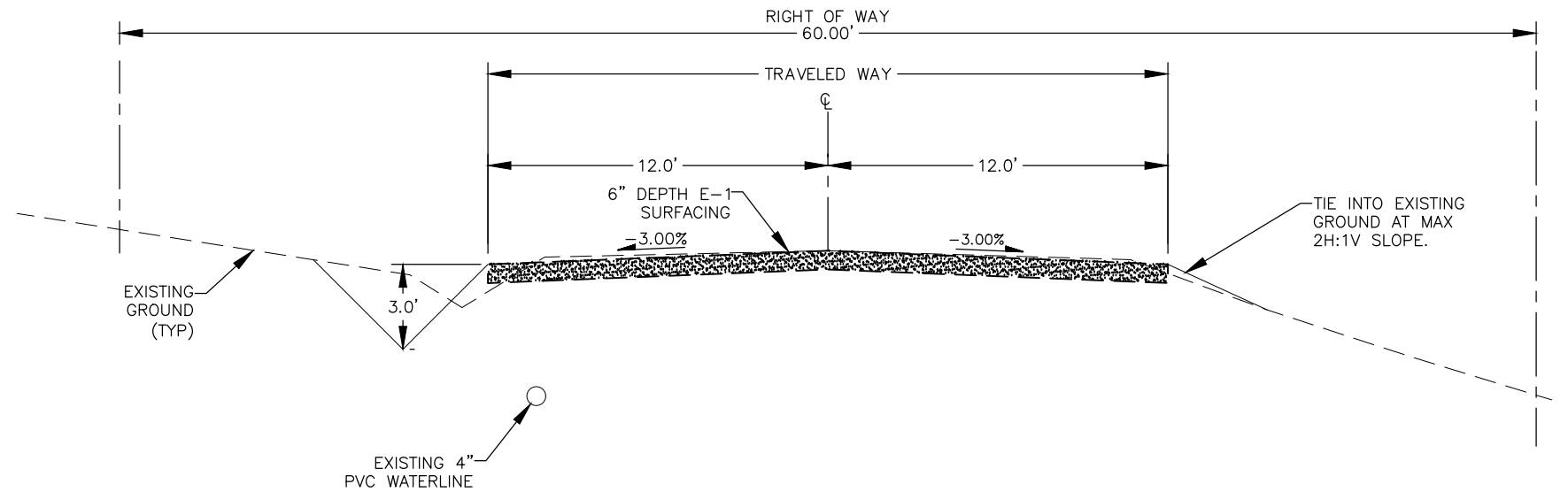
**CONCEPTUAL OVERVIEW**

SHEET NUMBER
<b>3</b>
OF
<b>14</b>

April 3, 2023

# TYPICAL SECTION NOTES

1. TYPICAL SECTION VARIES BEYOND STATION 4+16. SEE PLAN SHEETS FOR LAYOUT BEYOND THIS POINT.
2. WATERLINE LOCATION VARIES STATION TO STATION. SEE PLAN SHEETS AND GENERAL NOTES ON SHEET 2 FOR APPROXIMATE UTILITY LOCATIONS AND NOTES.



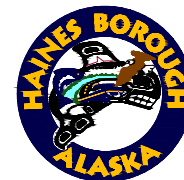
MATHIAS AVE SECTION STATION RANGE 1+00 TO 4+16  
NTS

35%  
DRAFT

RECORD OF REVISIONS			
No.	DATE	DESCRIPTION	BY

**proHNS LLC**  
CERTIFICATE OF AUTHORIZATION  
#100662

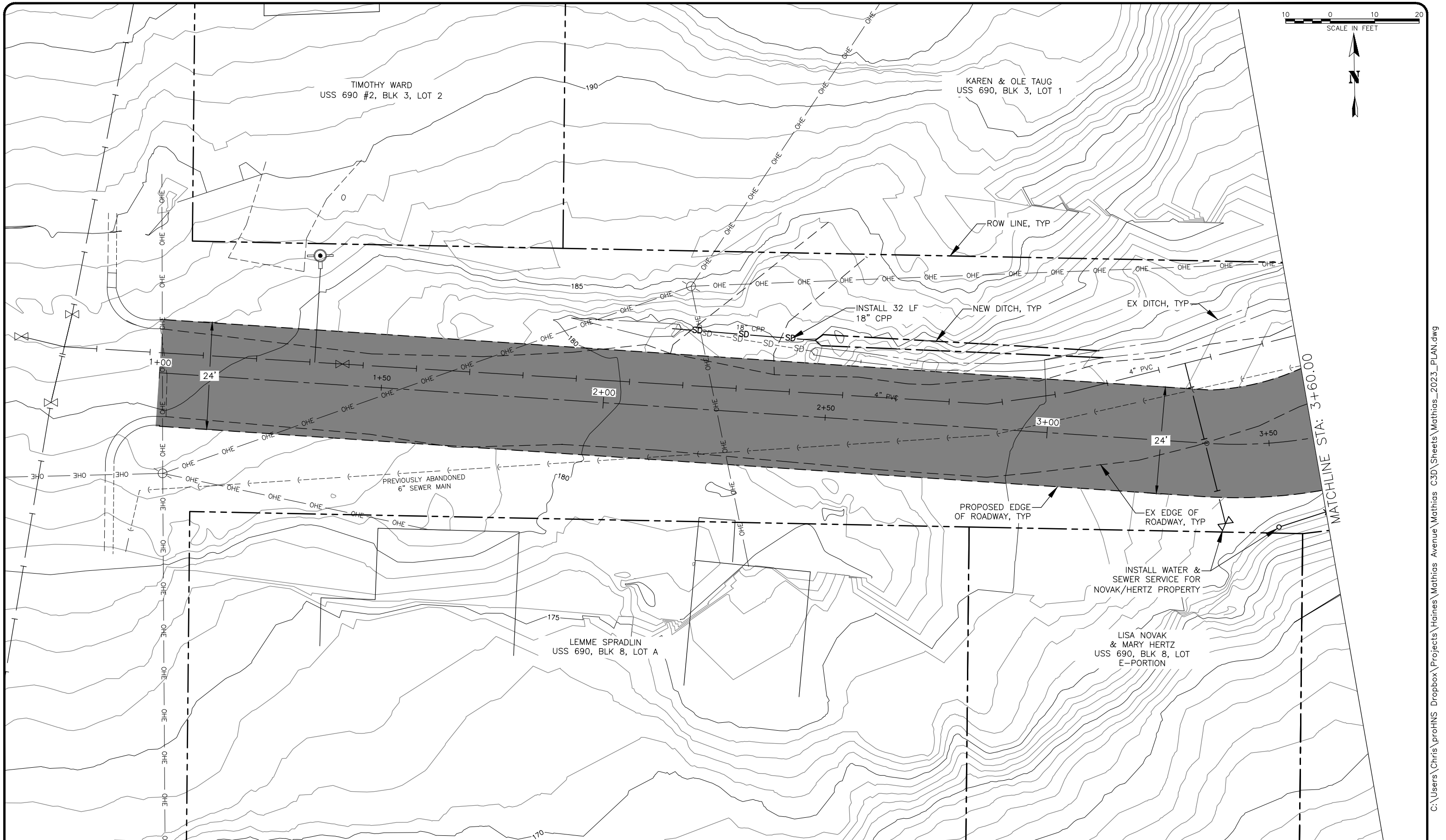
DRAWN BY: C. BYDLON  
DESIGNED BY: C. BYDLON  
CHECKED BY: G. GLADSJO  
219 MAIN ST #13  
HAINES, AK 99827  
1945 ALEX HOLDEN WAY #101  
JUNEAU, AK 99801  
907-780-4004  
solutions@proHNS.com  
www.proHNS.com



MATHIAS AVENUE  
IMPROVEMENTS

TYPICAL SECTION

SHEET NUMBER	
4	OF
10	



35%  
DRAFT

RECORD OF REVISIONS			
No.	DATE	DESCRIPTION	BY

**proHNS LLC**  
CERTIFICATE OF AUTHORIZATION  
#100662

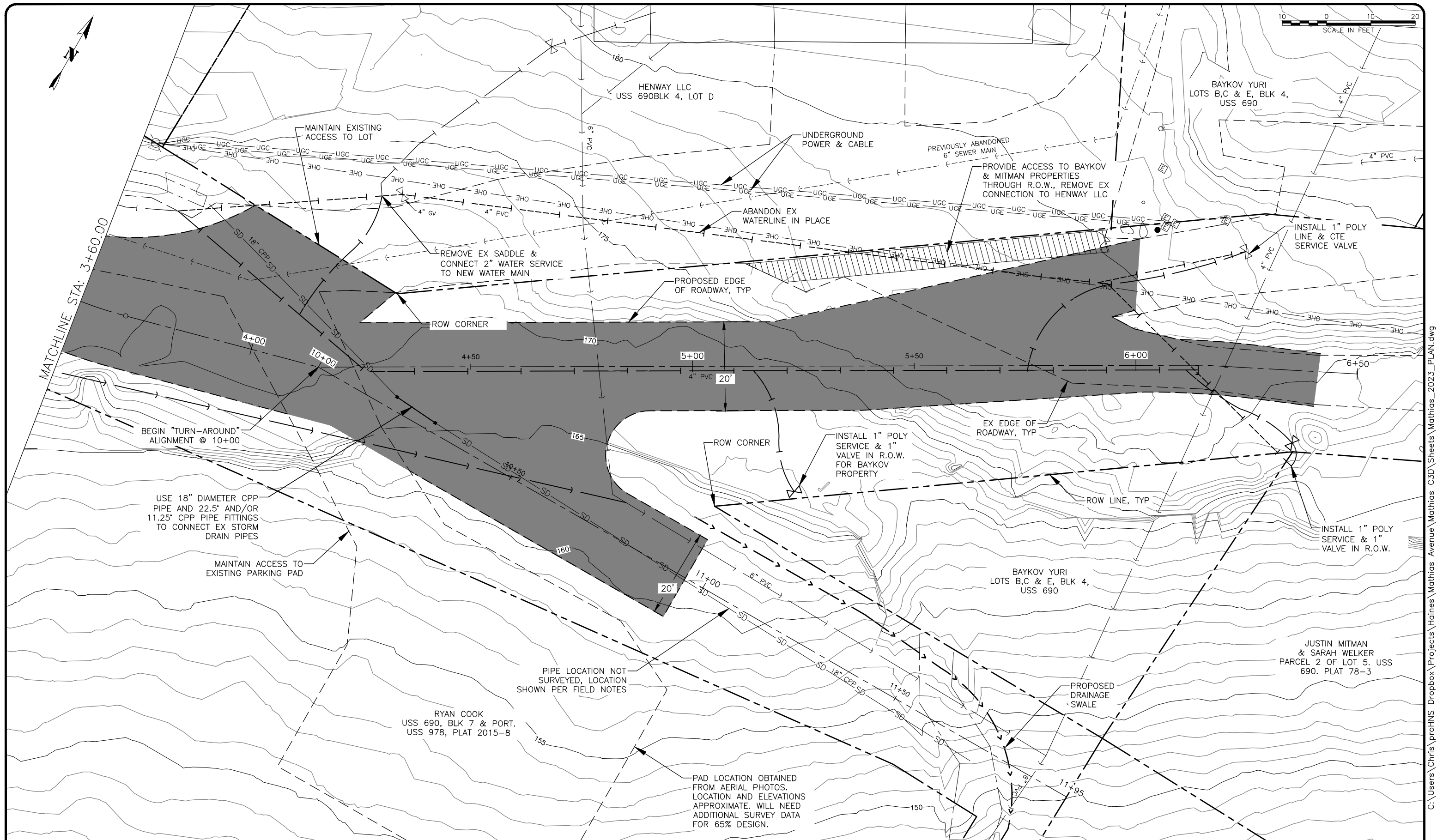
DRAWN BY: C. BYDLON  
DESIGNED BY: C. BYDLON  
CHECKED BY: G. GLADYSJO  
219 MAIN ST #13  
HAINES, AK 99827  
1945 ALEX HOLDEN WAY #101  
JUNEAU, AK 99801  
907-780-4004  
solutions@proHNS.com  
www.proHNS.com



**MATHIAS AVENUE  
IMPROVEMENTS**


**PLAN VIEW -  
MATHIAS AVE - BOP  
TO 3+60.00**

SHEET NUMBER	
5	OF
14	



35%  
DRAFT


RECORD OF REVISIONS			
No.	DATE	DESCRIPTION	BY



**proHNS LLC**  
CERTIFICATE OF AUTHORIZATION #100662

219 MAIN ST #13  
HAINES, AK 99827  
1945 ALEX HOLDEN WAY #101  
JUNEAU, AK 99801  
907-780-4004  
solutions@proHNS.com  
www.proHNS.com

DRAWN BY: C. BYDLON  
DESIGNED BY: C. BYDLON  
CHECKED BY: G. GLADSKO



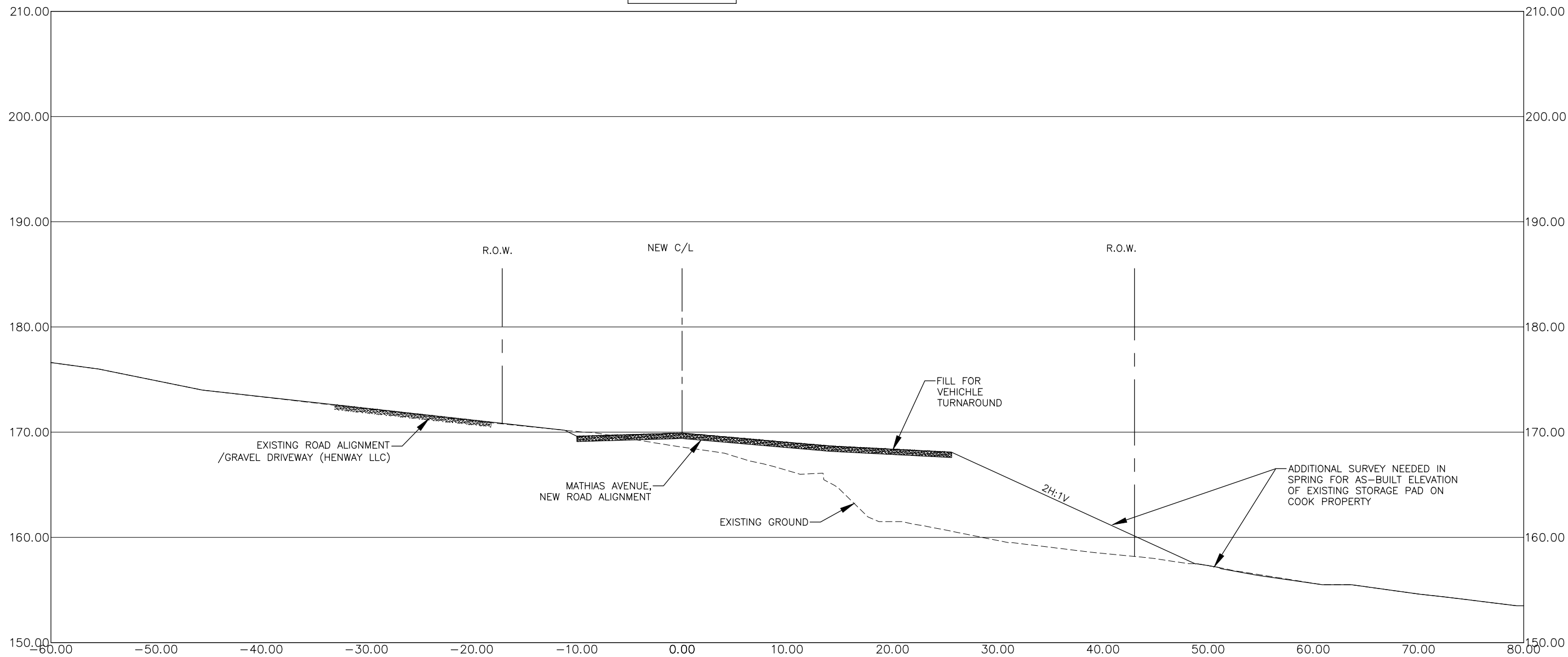
## MATHIAS AVENUE IMPROVEMENTS

## PLAN VIEW - MATHIAS AVE - 3+60.00 TO EOP

SHEET NUMBER	6
	OF
	14


C:\Users\Chris\proHNS\Dropbox\Projects\Haines\Mathias Avenue\Mathias C3D\Sheets\Mathias\_2023\_PLAN.dwg April 3, 2023

4+40.00



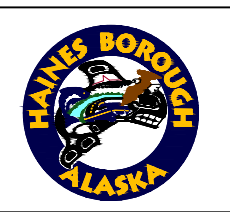
35%  
DRAFT

RECORD OF REVISIONS			
No.	DATE	DESCRIPTION	BY



**proHNS LLC**  
CERTIFICATE OF AUTHORIZATION  
#100662

DRAWN BY: C. BYDLON  
DESIGNED BY: C. BYDLON  
CHECKED BY: G. GLADSJO  
219 MAIN ST #13  
HAINES, AK 99827  
1945 ALEX HOLDEN WAY #101  
JUNEAU, AK 99801  
907-780-4004  
solutions@proHNS.com  
www.proHNS.com

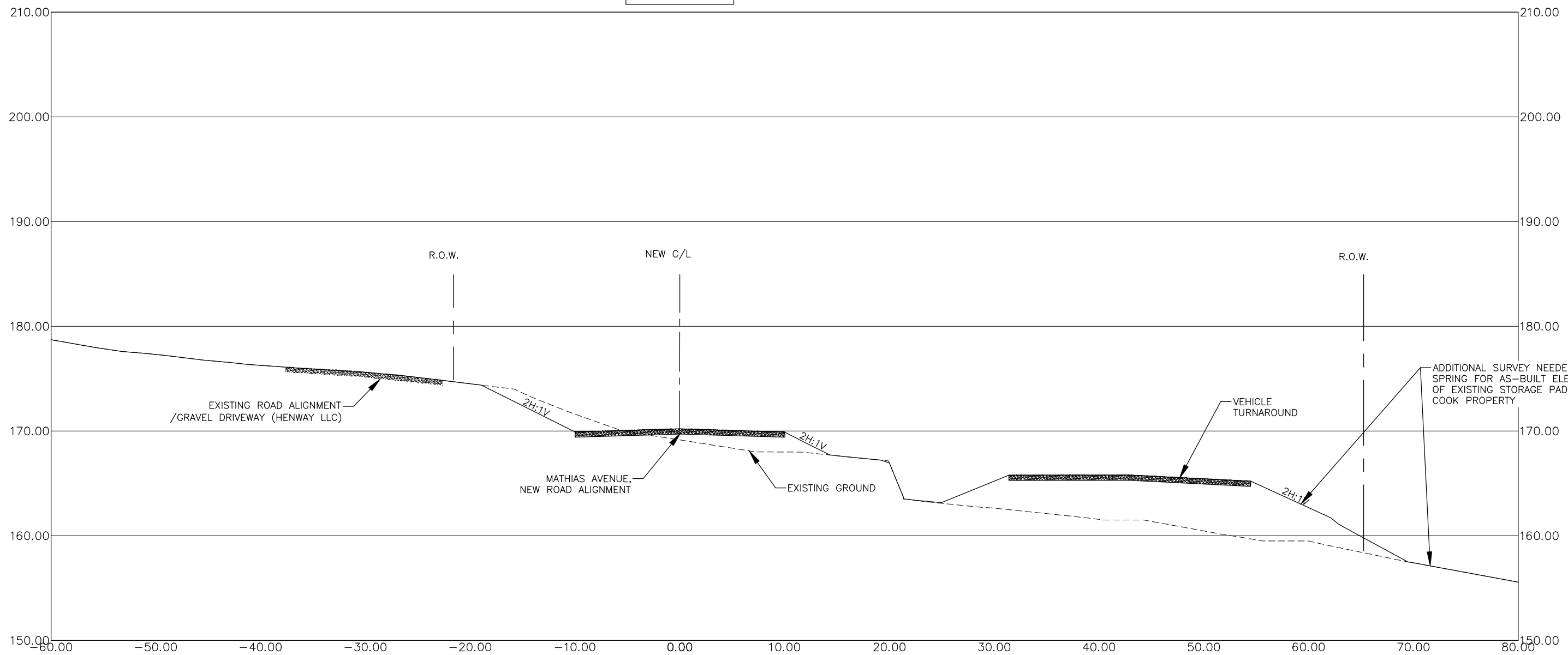


MATHIAS AVENUE  
IMPROVEMENTS

CROSS SECTION @  
STATION 4+40

SHEET NUMBER
7
OF
14

4+90.00



35%  
DRAFT

RECORD OF REVISIONS			
No.	DATE	DESCRIPTION	BY



DRAWN BY: C. BYDLON  
DESIGNED BY: C. BYDLON  
CHECKED BY: G. GLADSTON  
219 MAIN ST #13  
HAINES, AK 99827  
1945 ALEX HOLDEN WAY #101  
JUNEAU, AK 99801  
907-780-4004  
solutions@proHNS.com  
www.proHNS.com



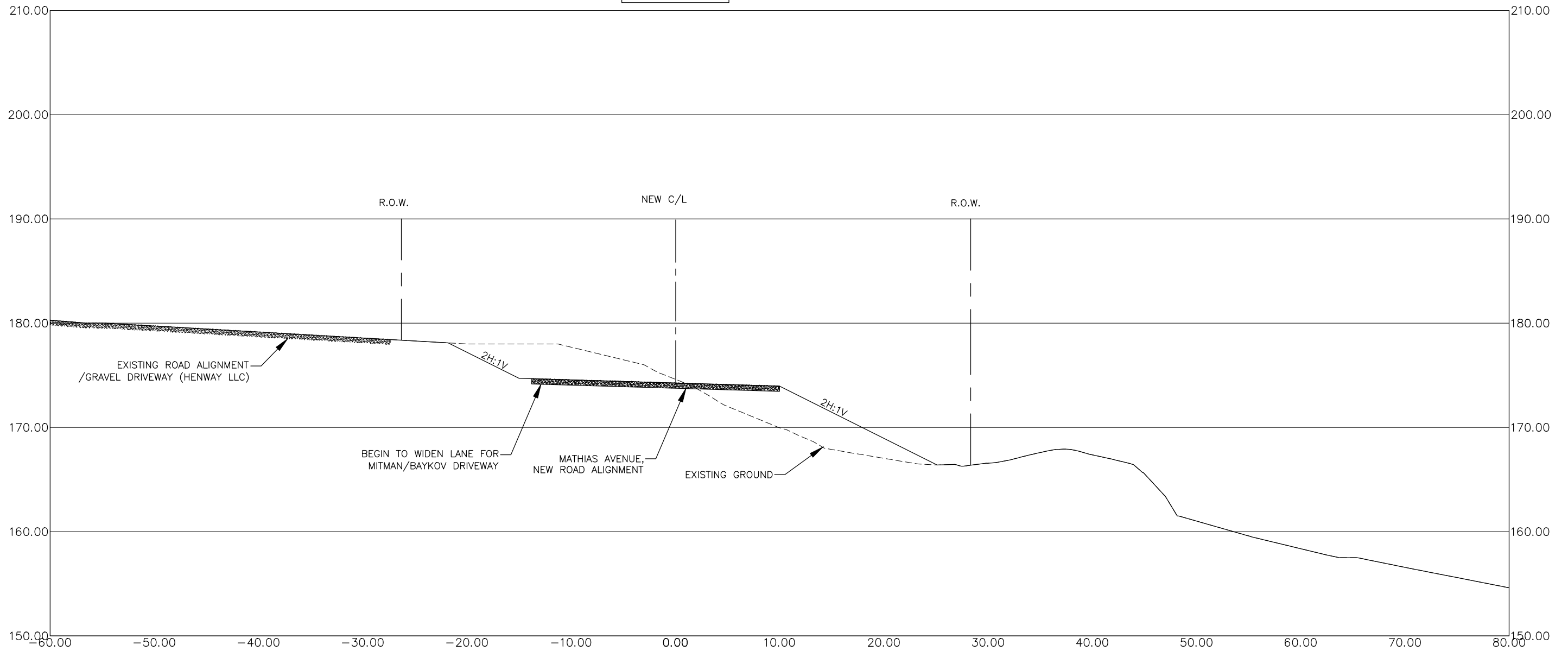
MATHIAS AVENUE  
IMPROVEMENTS

CROSS SECTION @  
STATION 4+90

SHEET NUMBER	8
OF	14



5+40.00



35%  
DRAFT

RECORD OF REVISIONS			
No.	DATE	DESCRIPTION	BY



DRAWN BY: C. BYDLON  
 DESIGNED BY: C. BYDLON  
 CHECKED BY: G. GLADSJO  
 219 MAIN ST #13  
 HAINES, AK 99827  
 1945 ALEX HOLDEN WAY #101  
 JUNEAU, AK 99801  
 907-780-4004  
 solutions@proHNS.com  
 www.proHNS.com

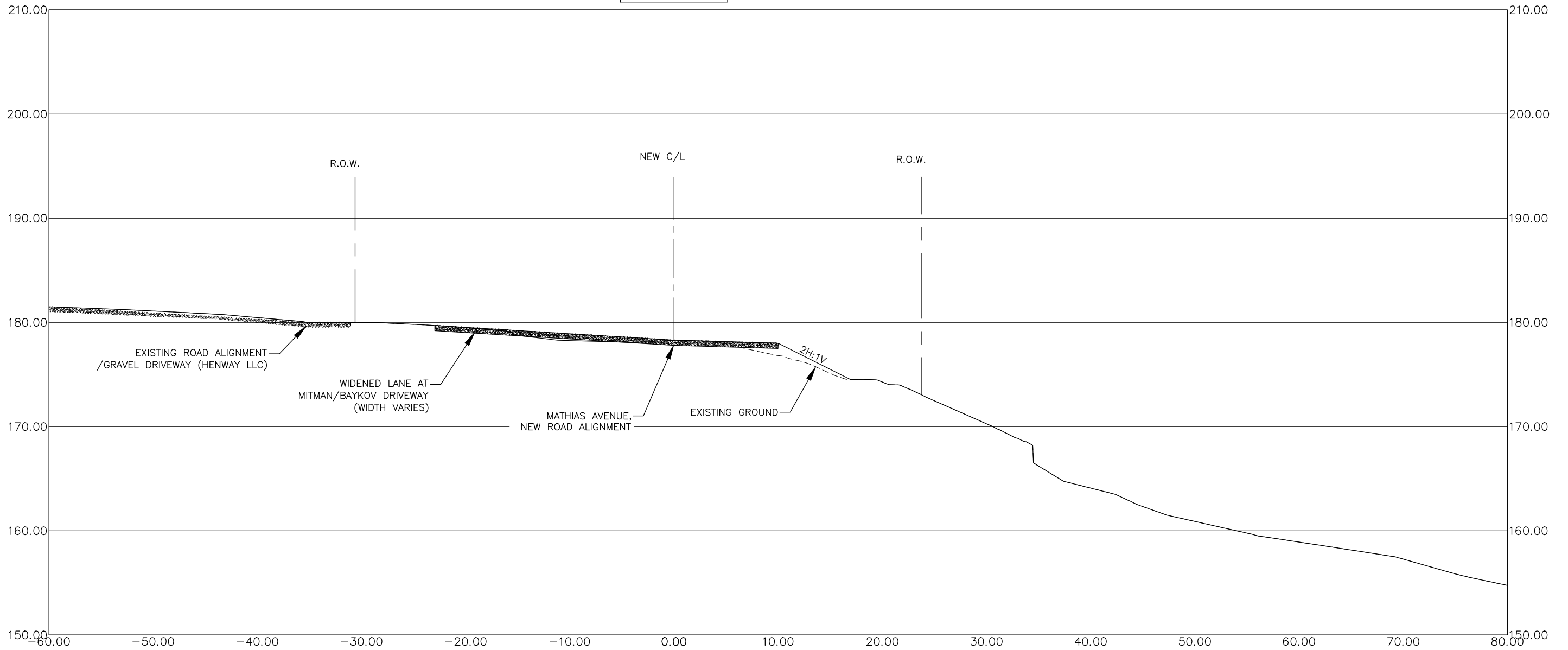


MATHIAS AVENUE  
IMPROVEMENTS

CROSS SECTION @  
STATION 5+40

SHEET NUMBER
9
OF
14

5+90.00



35%  
DRAFT

RECORD OF REVISIONS			
No.	DATE	DESCRIPTION	BY



DRAWN BY: C. BYDLON  
 DESIGNED BY: C. BYDLON  
 CHECKED BY: G. GLADSKO  
 219 MAIN ST #13  
 HAINES, AK 99827  
 1945 ALEX HOLDEN WAY #101  
 JUNEAU, AK 99801  
 907-780-4004  
 solutions@proHNS.com  
 www.proHNS.com

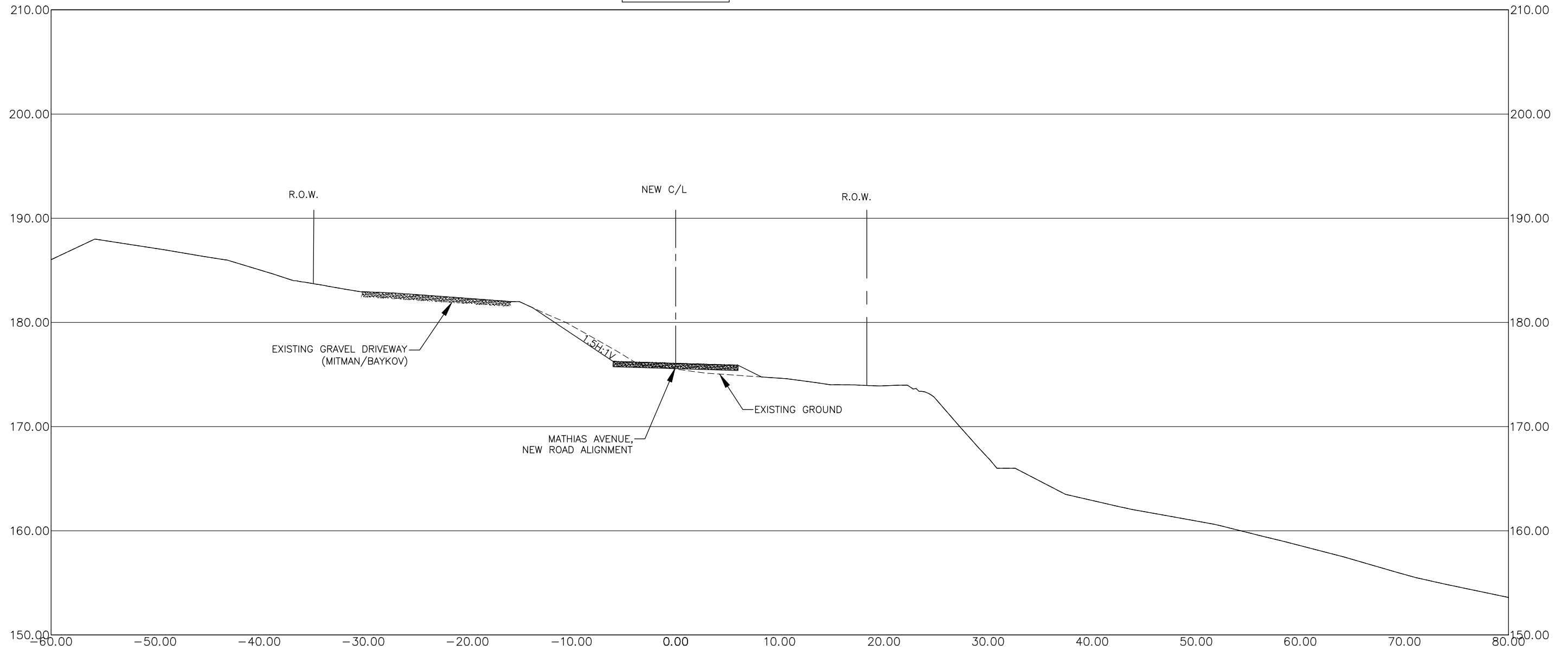


MATHIAS AVENUE  
IMPROVEMENTS

CROSS SECTION @  
STATION 5+90

SHEET NUMBER
10
OF
14

6+30.00



35%  
DRAFT

RECORD OF REVISIONS			
No.	DATE	DESCRIPTION	BY



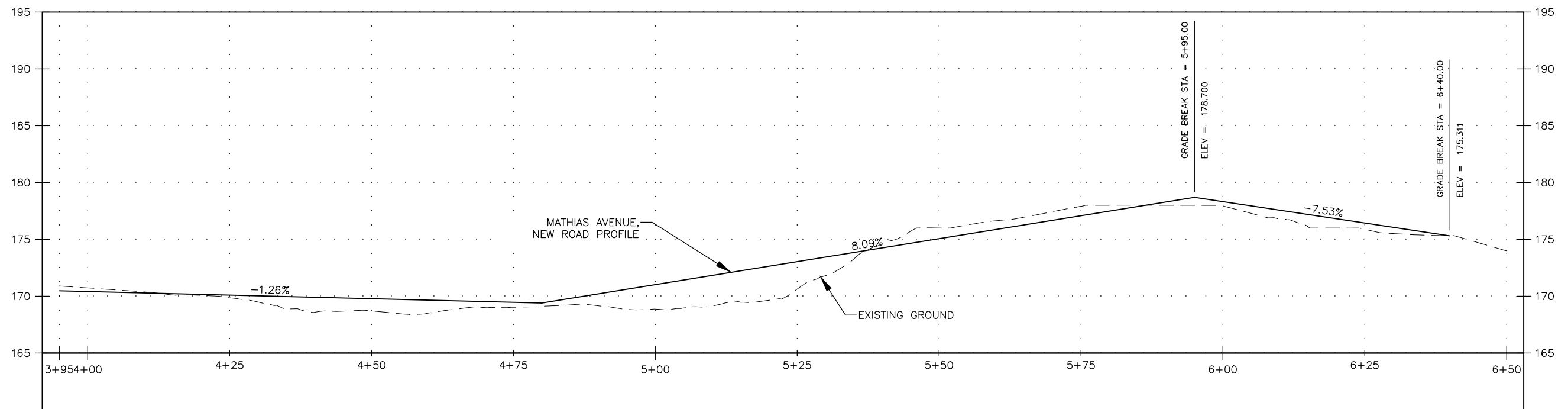
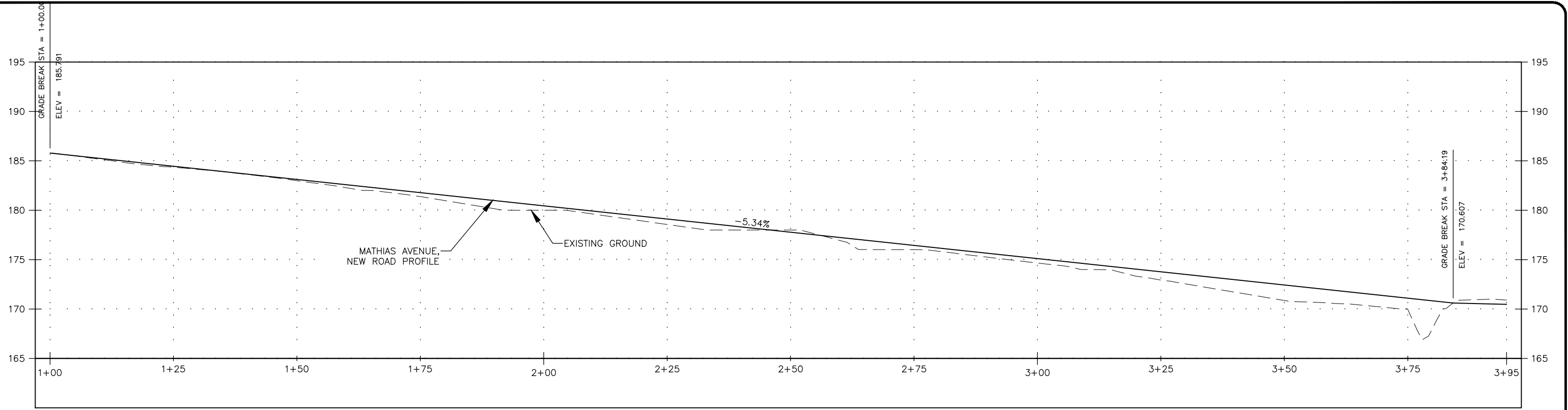
DRAWN BY: C. BYDLON  
 DESIGNED BY: C. BYDLON  
 CHECKED BY: G. GLADSKO  
 219 MAIN ST #13  
 HAINES, AK 99827  
 1945 ALEX HOLDEN WAY #101  
 JUNEAU, AK 99801  
 907-780-4004  
 solutions@proHNS.com  
 www.proHNS.com



MATHIAS AVENUE  
IMPROVEMENTS

CROSS SECTION @  
STATION 6+30

SHEET NUMBER
11
OF
14



35%  
DRAFT

RECORD OF REVISIONS			
No.	DATE	DESCRIPTION	BY



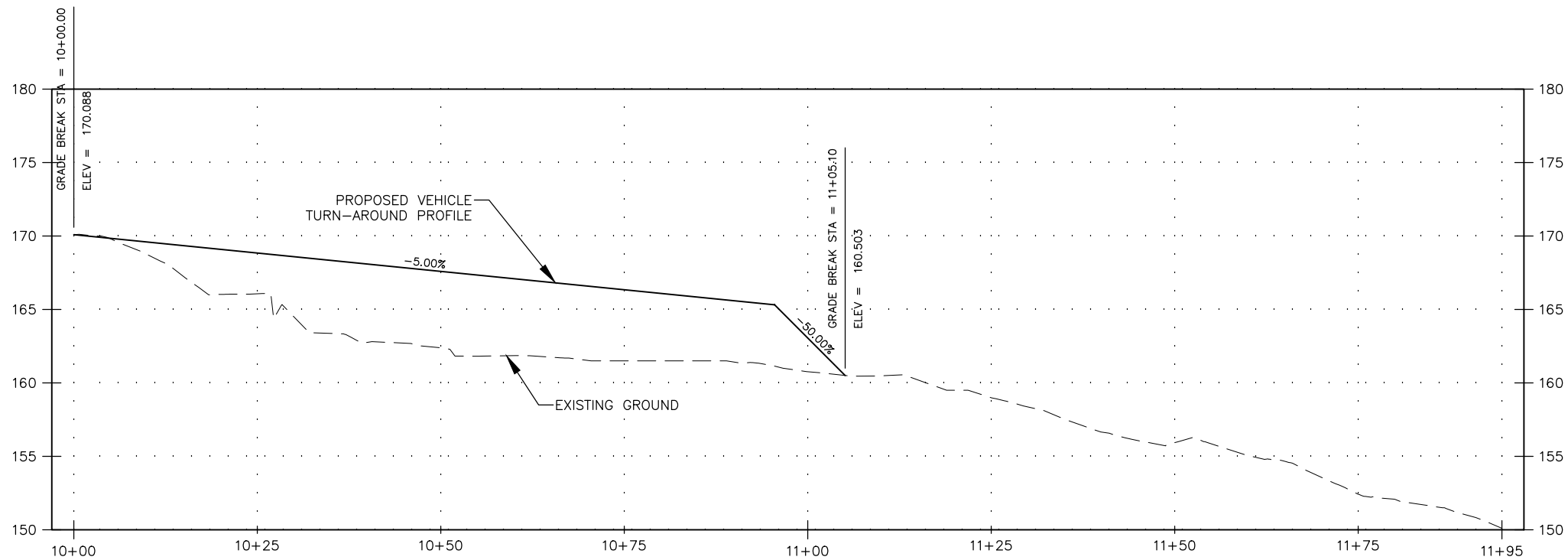
DRAWN BY: C. BYDLON  
 DESIGNED BY: C. BYDLON  
 CHECKED BY: G. GLADSJO  
 219 MAIN ST #13  
 HAINES, AK 99827  
 1945 ALEX HOLDEN WAY #101  
 JUNEAU, AK 99801  
 907-780-4004  
 solutions@proHNS.com  
 www.proHNS.com



MATHIAS AVENUE  
IMPROVEMENTS

PROFILE VIEW -  
MATHIAS AVE

SHEET NUMBER	
12	OF
14	



35%  
DRAFT

RECORD OF REVISIONS			
No.	DATE	DESCRIPTION	BY

**proHNS LLC**  
CERTIFICATE OF AUTHORIZATION  
#100662

DRAWN BY: C. BYDLON  
DESIGNED BY: C. BYDLON  
CHECKED BY: G. GLADSO  
219 MAIN ST #13  
HAINES, AK 99827  
1945 ALEX HOLDEN WAY #101  
JUNEAU, AK 99801  
907-780-4004  
solutions@proHNS.com  
www.proHNS.com



MATHIAS AVENUE  
IMPROVEMENTS

PROFILE VIEW -  
TURN AROUND

SHEET NUMBER	
13	OF
14	