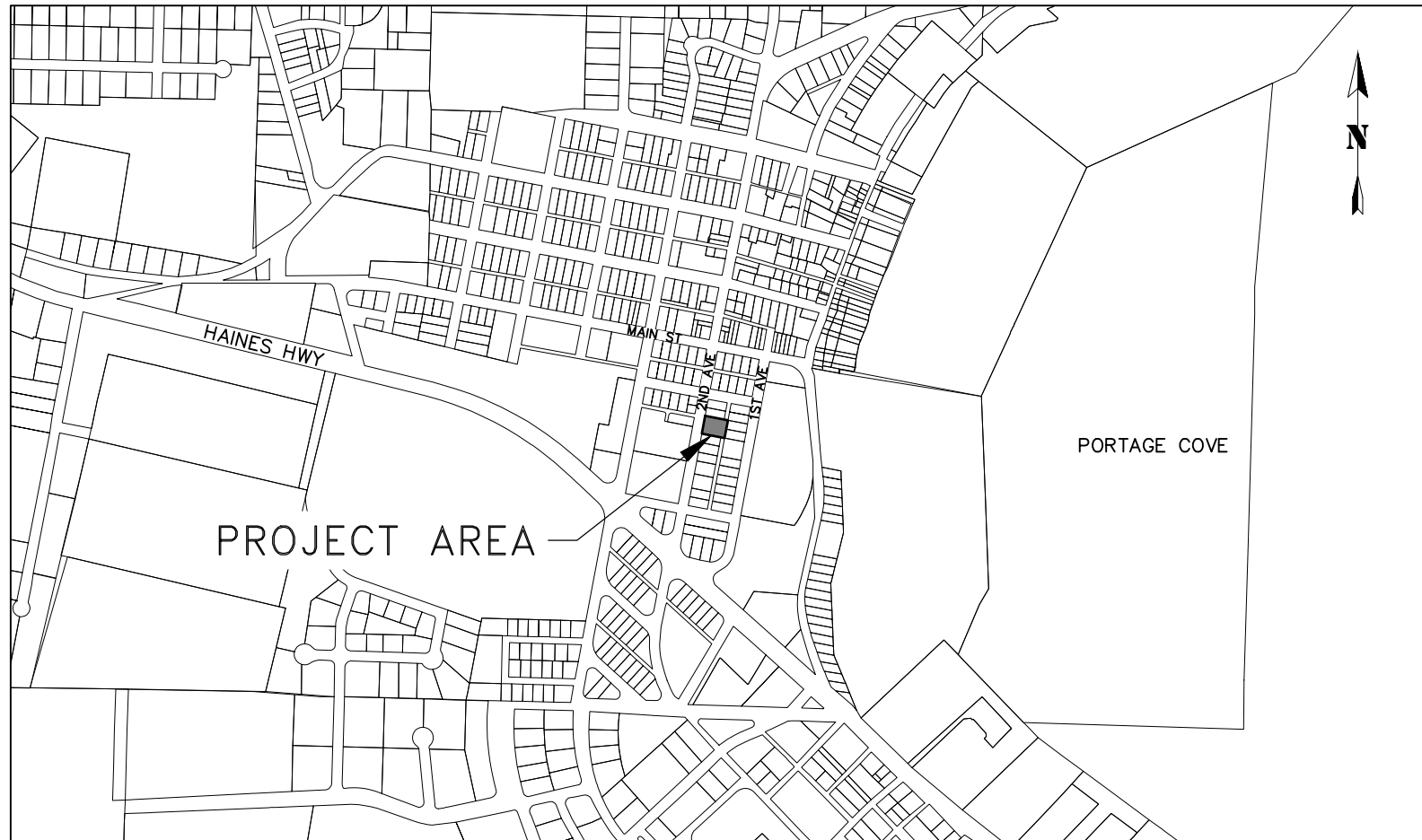


HAINES BOROUGH VISITOR CENTER PARKING LOT

HAINES BOROUGH, ALASKA

SHEET INDEX	
SHEET NO.	DESCRIPTION
1	COVER SHEET
2	LEGEND ABBREVIATIONS GENERAL NOTES
3	EXISTING SITE CONDITIONS
4	SITE PLAN
5	CONSTRUCTION DETAILS
6	SURVEY CONTROL SHEET



PROJECT LOCATION MAP
NTS



ALASKA VICINITY MAP
NTS

c:\Users\ethanroemeling\prohns\dropbox\Projects\Haines\hb_visitor_center_parking_lot\c3d_visitor_center_parking_lot\c3d_visitor_center_parking_lot_COVER.dwg

April 29, 2024

95%
DRAFT
FOR REVIEW ONLY

RECORD OF REVISIONS			
No.	DATE	DESCRIPTION	BY

proHNS LLC
CERTIFICATE OF AUTHORIZATION
#100662

DRAWN BY: E. ROEMELING
DESIGNED BY: E. ROEMELING
CHECKED BY: L. CHAMBERS
219 MAIN ST #13
HAINES, AK 99827
2201 DUNN STREET #2
JUNEAU, AK 99801
(907) 780-4004
solutions@proHNS.com
www.proHNS.com



HAINES BOROUGH VISITOR CENTER PARKING LOT

COVER SHEET

SHEET NUMBER
1
OF
6

c:\Users\ethanroemeling\prohns dropbox\Projects\Haines\hb_visitor_center_parking_lot\c3d_visitor_center_parking_lot\c3d_visitor_center_parking_lot_LAG.dwg

LEGEND

DESCRIPTION	EXISTING	REMOVE	PROPOSED
ASPHALT	EDGE OF ASPHALT		HATCHED AREA
BOLLARDS	• •		
BUILDING			
FLOW ARROW			
FLOW LINE	> >		> >
FENCE	x x x x x		
FIRE HYDRANT			
MONUMENT			
PROPERTY LINE	---		
SANITARY SEWER CLEANOUT	○		
SANITARY SEWER PIPE	PIPE SIZE & TYPE		
SANITARY SEWER MANHOLE			
SAWCUT & MTE LIMITS			---
SIGN			
STORM DRAIN CATCH BASIN			
STORM DRAIN PIPE	PIPE SIZE & TYPE SD	PIPE SIZE & TYPE SD	SD (P-1) SD
STORM DRAIN MANHOLE, GRATE			
CATCH BASIN WITH AREA DRAIN			
TOP OF DITCH	---		
UNDERGROUND PIPE CAP	[
UTILITY POLE	○		
UTILITY POLE WITH LUMINAIRE	○		
WATER LINE PIPE	PIPE SIZE & TYPE		
WATER VALVE BOX			

ABBREVIATIONS

AC	ASPHALT CONCRETE
BOP	BEGINNING OF PROJECT
BTM	BOTTOM
CB	CATCH BASIN
CL	CENTERLINE
CMP	CORRUGATED METAL PIPE
CPP	CORRUGATED POLYETHYLENE PIPE
CONC	CONCRETE
CTE	CONNECT TO EXISTING
DIP	DUCTILE IRON PIPE
DIA	DIAMETER
EA	EDGE OF ASPHALT
EL	ELEVATION
EOP	END OF PROJECT
EX	EXISTING
FG	FINISHED GRADE
FH	FIRE HYDRANT
GV	GATE VALVE
HB	HAINES BOROUGH
HDPE	HIGH DENSITY POLYETHYLENE
IE	INVERT ELEVATION
INV	INVERT
LT	LEFT
LVC	LENGTH OF VERTICAL CURVE
MH	MANHOLE
MIN	MINIMUM
MTE	MATCH TO EXISTING
NIC	NOT IN CONTRACT
NO	NUMBER
NTS	NOT TO SCALE
OD	OUTSIDE DIAMETER
OHE	OVERHEAD ELECTRIC
PSI	POUNDS PER SQUARE INCH
PVI	POLYVINYL CHLORIDE PIPE
RP	RADIUS POINT
RT	RIGHT
ROW	RIGHT-OF-WAY
SDMH	STORM DRAIN MANHOLE
SSMH	SANITARY SEWER MANHOLE
STA	STATION
STD	STANDARD
TBC	TOP BACK OF CURB
TBG	TOP BACK OF GUTTER
TBM	TEMPORARY BENCHMARK
TP	TOP OF PAVEMENT
TP	TYPICAL

GENERAL NOTES

- ALL WORK FOR THESE PLANS SHALL BE CONDUCTED IN STRICT ACCORDANCE WITH ALL APPLICABLE LOCAL, STATE AND FEDERAL LAWS AND STANDARDS.
- LOCATIONS AND ELEVATION OF EXISTING UNDERGROUND WATER, SEWER, POWER, TELEPHONE AND CABLE TELEVISION SHOWN ON THE PLANS WERE DERIVED FROM HAINES BOROUGH AS-BUILTS AND FIELD LOCATES. THE ACTUAL LOCATION OF UTILITIES MAY VARY FROM THOSE SHOWN. THE CONTRACTOR IS RESPONSIBLE FOR LOCATING, PROTECTING AND MAINTAINING EXISTING UTILITIES THROUGHOUT THE CONSTRUCTION OF THE PROJECT. ANY DAMAGE TO UTILITIES DURING CONSTRUCTION SHALL BE PAID FOR BY THE CONTRACTOR AND SHALL BE CONSIDERED INCIDENTAL TO THE CONTRACT. THE CONTRACTOR SHALL CONTACT AND REQUEST UTILITY LOCATES, AT A MINIMUM, FROM THE FOLLOWING PRIOR TO BEGINNING EARTH DISTURBING ACTIVITIES:
 - HAINES BOROUGH PUBLIC FACILITIES, 907-766-6414.
 - ALASKA POWER & TELEPHONE(AP&T), 907-766-6500.
 - HAINES CABLE TV, 907-766-2337.
- A GEOTECHNICAL INVESTIGATION WAS NOT PERFORMED AS PART OF THIS DESIGN. HARDPAN, CLAY, GROUNDWATER, LARGE BOULDERS, BEDROCK, STUMPS, LOGS, ORGANICS, AND OTHER NATIVE MATERIALS MAY BE ENCOUNTERED AT VARIOUS DEPTHS DURING TRENCHING AND SITE GRADING OPERATIONS.
- THE TOTAL DISTURBED AREA FOR THIS PROJECT IS ANTICIPATED TO BE LESS THAN ONE ACRE.
- ALL DISTURBED AREAS SHALL BE RESTORED TO EXISTING CONDITIONS AND GRADES, AND STABILIZED WITH AN APPROVED HYDRAULIC GROWTH MEDIUM AND GRASS SEED UNLESS OTHERWISE SHOWN ON THE PLANS.
- CONTRACTOR SHALL ENSURE GARBAGE PICKUP, PRIVATE AND BUSINESS DELIVERIES, AND DAILY MAIL SERVICE WILL BE UNINTERRUPTED TO ALL BUSINESS AND RESIDENCES AFFECTED BY THIS PROJECT.
- THE CONTRACTOR SHALL NOTIFY EACH PROPERTY OWNER OF DRIVEWAY CLOSURE 48 HOURS PRECEDING THE DAY THE DRIVEWAY IS TO BE CLOSED TO VEHICULAR ACCESS. THE PROPERTY OWNER SHALL BE INFORMED OF THE PERIOD OF TIME THE CLOSURE WILL BE IN EFFECT. NO DRIVEWAY CLOSURES WILL BE PERMITTED UNTIL THIS REQUIREMENT HAS BEEN MET TO THE SATISFACTION OF THE ENGINEER.
- THE CONTRACTOR SHALL NOT STORE MATERIALS OR EQUIPMENT, OR OPERATE EQUIPMENT WITH ITS TRACKS OR WHEELS PLACED ON PRIVATE PROPERTY, WITHOUT THE APPROVAL OF THE PROPERTY OWNER.
- THE PLAN DRAWINGS DO NOT SHOW ALL PLANTINGS, AND OTHER LANDSCAPING THAT WILL BE ENCOUNTERED DURING CONSTRUCTION ACTIVITIES. NO PLANTINGS OR LANDSCAPING ARE TO BE REMOVED OR DAMAGED, UNLESS SHOWN ON THE DRAWINGS OR DIRECTED BY THE ENGINEER.
- ALL ITEMS DESIGNATED TO BE REMOVED SHALL BE DISPOSED OF OFF-SITE, EXCEPT AS NOTED IN THE CONTRACT DOCUMENTS. ALL OTHER MATERIALS TO BE REMOVED AND DISPOSED OF SHALL BECOME THE PROPERTY OF THE CONTRACTOR, INCLUDING CONCRETE, ASPHALT, UNSUITABLE SOILS AND ETC.
- WORK SHALL BE PERFORMED MONDAY THROUGH FRIDAY, 8AM TO 5PM ONLY.

TRAFFIC CONTROL NOTES

- ALL TRAFFIC TO BE CONTROLLED PER REQUIREMENTS OF THE ALASKA TRAFFIC MANUAL, U.S. DEPARTMENT OF TRANSPORTATION "MANUAL ON UNIFORM TRAFFIC CONTROL DEVICES" AND THE ALASKA SUPPLEMENT.
- MAINTAIN ONE (1) LANE FOR TRAFFIC AT ALL TIMES UNLESS OTHERWISE APPROVED BY THE ENGINEER.
- NOTIFICATION OF WORK THAT MAY IMPEDE TRAFFIC MUST BE PROVIDED TO THE HB PUBLIC WORKS DEPARTMENT, HB POLICE DEPARTMENT, HAINES VOLUNTEER FIRE DEPARTMENT, CHILKOOT INDIAN ASSOCIATION, ALASKA DOT&PF HAINES M&O FOREMAN, AND THE GENERAL PUBLIC A MINIMUM OF 72 HOURS IN ADVANCE OF IMPLEMENTING TRAFFIC CONTROL.
- CONTRACTOR MUST PROVIDE ALL NECESSARY SIGNS AND TRAFFIC CONTROL DEVICES TO MOVE TRAFFIC THROUGH OR AROUND THE PROJECT SITE.
- PROVIDE ACCESS FOR EMERGENCY VEHICLES AT ALL TIMES.

STANDARD SPECIFICATION

PERFORM THE WORK SHOWN BY THESE PLANS IN ACCORDANCE WITH THE ALASKA DEPARTMENT OF TRANSPORTATION AND PUBLIC FACILITIES 2020 STANDARD SPECIFICATIONS FOR HIGHWAY CONSTRUCTION AND THE PROJECT MANUAL.

April 29, 2024

95%
DRAFT
FOR REVIEW ONLY

RECORD OF REVISIONS			
No.	DATE	DESCRIPTION	BY



DRAWN BY:	E. ROEMELING
DESIGNED BY:	E. ROEMELING
CHECKED BY:	L. CHAMBERS
219 MAIN ST #13 HAINES, AK 99827 2201 DUNN STREET #2 JUNEAU, AK 99801 (907) 780-4004	
solutions@proHNS.com www.proHNS.com	



HAINES BOROUGH VISITOR
CENTER PARKING LOT

LEGEND
ABBREVIATIONS
GENERAL NOTES

SHEET NUMBER
2
OF
6

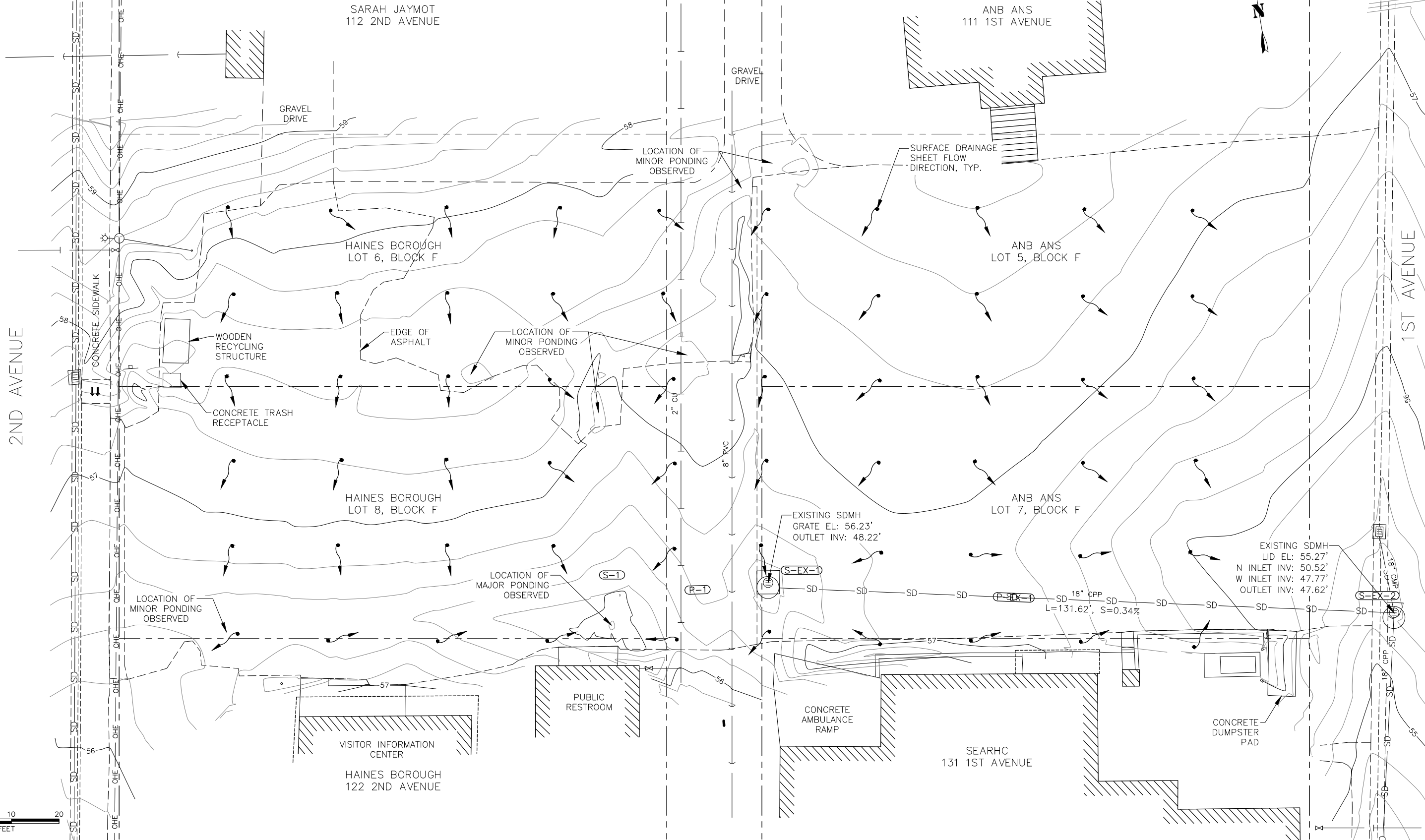
c:\Users\ethanroemeling\prohns dropbox\Projects\Haines\hb_visitor_center_parking_lot\c3d_visitor_center_parking_lot_SITE.dwg

April 29, 2024




2ND AVENUE

1ST AVENUE



RECORD OF REVISIONS			
No.	DATE	DESCRIPTION	BY



proHNS LLC
CERTIFICATE OF AUTHORIZATION #100662

DRAWN BY: E. ROEMELING
DESIGNED BY: E. ROEMELING
CHECKED BY: L. CHAMBERS

219 MAIN ST #13
HAINE, AK 99827
2201 DUNN STREET #2
JUNEAU, AK 99801
(907) 780-4004

solutions@proHNS.com
www.proHNS.com



HAINE BOROUG VISITOR CENTER PARKING LOT

EXISTING SITE CONDITIONS

SHEET NUMBER	3
OF	6

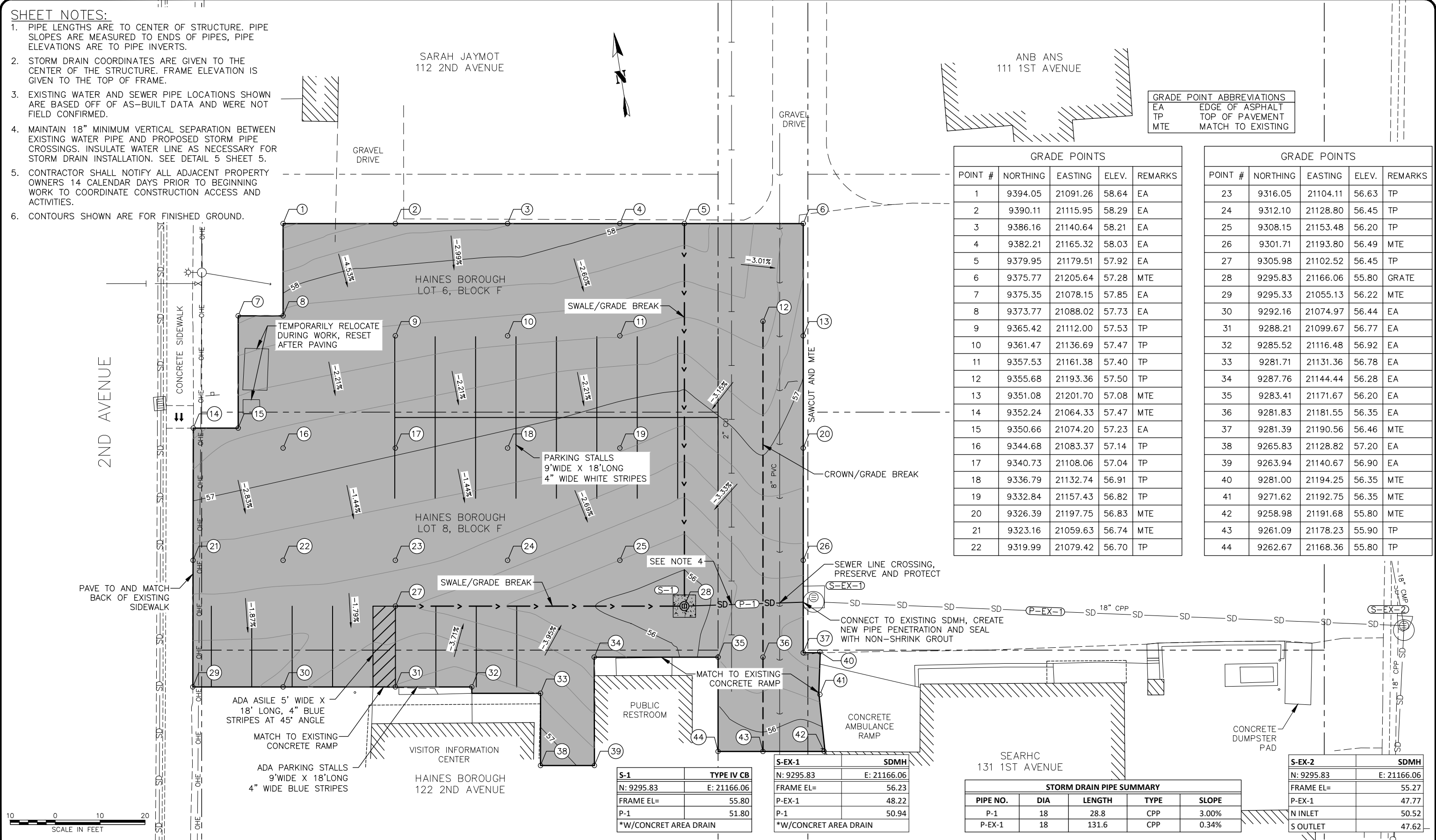
SHEET NOTES:

1. PIPE LENGTHS ARE TO CENTER OF STRUCTURE. PIPE SLOPES ARE MEASURED TO ENDS OF PIPES, PIPE ELEVATIONS ARE TO PIPE INVERTS.
2. STORM DRAIN COORDINATES ARE GIVEN TO THE CENTER OF THE STRUCTURE. FRAME ELEVATION IS GIVEN TO THE TOP OF FRAME.
3. EXISTING WATER AND SEWER PIPE LOCATIONS SHOWN ARE BASED OFF OF AS-BUILT DATA AND WERE NOT FIELD CONFIRMED.
4. MAINTAIN 18" MINIMUM VERTICAL SEPARATION BETWEEN EXISTING WATER PIPE AND PROPOSED STORM PIPE CROSSINGS. INSULATE WATER LINE AS NECESSARY FOR STORM DRAIN INSTALLATION. SEE DETAIL 5 SHEET 5.
5. CONTRACTOR SHALL NOTIFY ALL ADJACENT PROPERTY OWNERS 14 CALENDAR DAYS PRIOR TO BEGINNING WORK TO COORDINATE CONSTRUCTION ACCESS AND ACTIVITIES.
6. CONTOURS SHOWN ARE FOR FINISHED GROUND.

GRADE POINT ABBREVIATIONS	
EA	EDGE OF ASPHALT
TP	TOP OF PAVEMENT
MTE	MATCH TO EXISTING

GRADE POINTS				
POINT #	NORTHING	EASTING	ELEV.	REMARKS
1	9394.05	21091.26	58.64	EA
2	9390.11	21115.95	58.29	EA
3	9386.16	21140.64	58.21	EA
4	9382.21	21165.32	58.03	EA
5	9379.95	21179.51	57.92	EA
6	9375.77	21205.64	57.28	MTE
7	9375.35	21078.15	57.85	EA
8	9373.77	21088.02	57.73	EA
9	9365.42	21112.00	57.53	TP
10	9361.47	21136.69	57.47	TP
11	9357.53	21161.38	57.40	TP
12	9355.68	21193.36	57.50	TP
13	9351.08	21201.70	57.08	MTE
14	9352.24	21064.33	57.47	MTE
15	9350.66	21074.20	57.23	EA
16	9344.68	21083.37	57.14	TP
17	9340.73	21108.06	57.04	TP
18	9336.79	21132.74	56.91	TP
19	9332.84	21157.43	56.82	TP
20	9326.39	21197.75	56.83	MTE
21	9323.16	21059.63	56.74	MTE
22	9319.99	21079.42	56.70	TP

GRADE POINTS				
POINT #	NORTHING	EASTING	ELEV.	REMARKS
23	9316.05	21104.11	56.63	TP
24	9312.10	21128.80	56.45	TP
25	9308.15	21153.48	56.20	TP
26	9301.71	21193.80	56.49	MTE
27	9305.98	21102.52	56.45	TP
28	9295.83	21166.06	55.80	GRATE
29	9295.33	21055.13	56.22	MTE
30	9292.16	21074.97	56.44	EA
31	9288.21	21099.67	56.77	EA
32	9285.52	21116.48	56.92	EA
33	9281.71	21131.36	56.78	EA
34	9287.76	21144.44	56.28	EA
35	9283.41	21171.67	56.20	EA
36	9281.83	21181.55	56.35	EA
37	9281.39	21190.56	56.46	MTE
38	9265.83	21128.82	57.20	EA
39	9263.94	21140.67	56.90	EA
40	9281.00	21194.25	56.35	MTE
41	9271.62	21192.75	56.35	MTE
42	9258.98	21191.68	55.80	MTE
43	9261.09	21178.23	55.90	TP
44	9262.67	21168.36	55.80	TP



S-1	TYPE IV CB
N: 9295.83	E: 21166.06
FRAME EL=	55.80
P-1	51.80
*W/CONCRET AREA DRAIN	

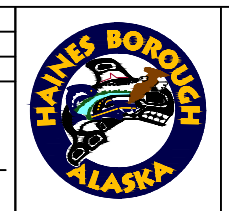
S-EX-1	SDMH
N: 9295.83	E: 21166.06
FRAME EL=	56.23
P-EX-1	48.22
P-1	50.94
*W/CONCRET AREA DRAIN	

STORM DRAIN PIPE SUMMARY				
PIPE NO.	DIA	LENGTH	TYPE	SLOPE
P-1	18	28.8	CPP	3.00%
P-EX-1	18	131.6	CPP	0.34%

S-EX-2	SDMH
N: 9295.83	E: 21166.06
FRAME EL=	55.27
P-EX-1	47.77
N INLET	50.52
S OUTLET	47.62

RECORD OF REVISIONS			
No.	DATE	DESCRIPTION	BY

proHNS LLC
 CERTIFICATE OF AUTHORIZATION #100662
 219 MAIN ST #13
 HAINES, AK 99827
 2201 DUNN STREET #2
 JUNEAU, AK 99801
 (907) 780-4004
 solutions@proHNS.com
 www.proHNS.com



HAINES BOROUGH VISITOR CENTER PARKING LOT

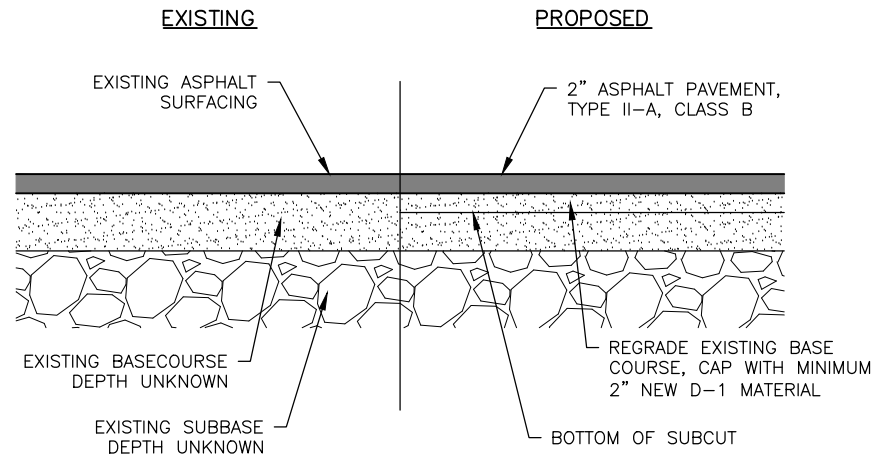
SITE PLAN

SHEET NUMBER
4
 OF
6

c:\Users\ethanroemeling\prohns dropbox\Projects\Haines\hb_visitor_center_parking_lot\c3d_visitor_center_parking_lot\Sheets\Visitor Center Parking Lot_SITE.dwg

April 29, 2024
 95%
DRAFT
 FOR REVIEW ONLY

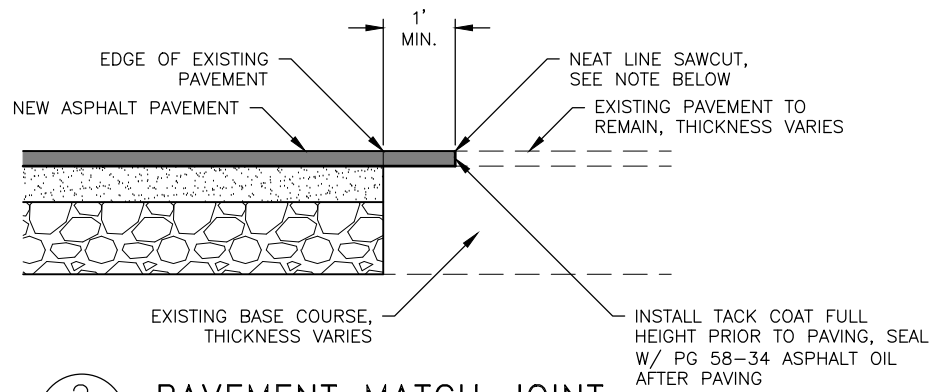
c:\Users\ethanroemeling\prohns dropbox\Projects\Haines\hb_visitor_center_parking_lot\c3d_visitor_center_parking_lot\DETAILS.dwg



1
5 **PARKING AREA TYPICAL SECTION**
SCALE: NOT TO SCALE

DETAIL 1/5 NOTES:

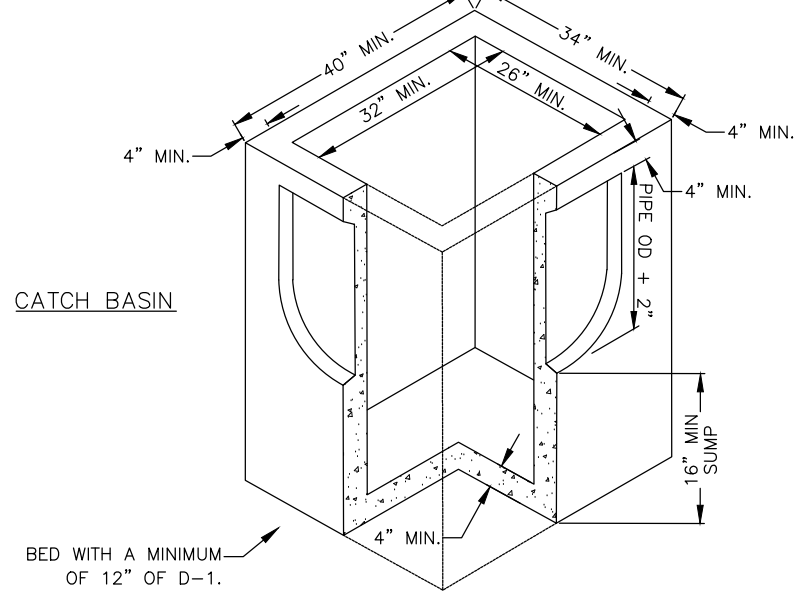
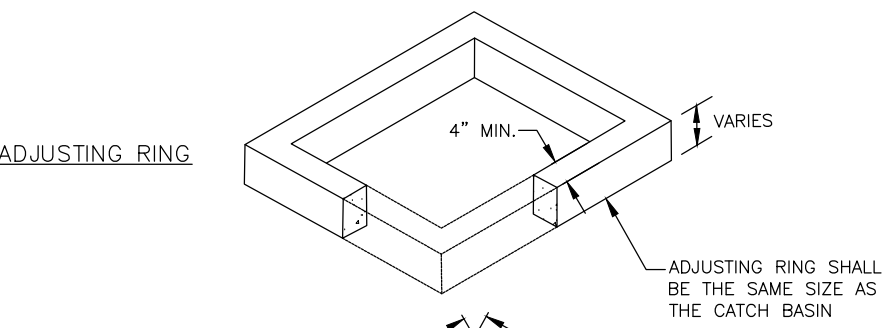
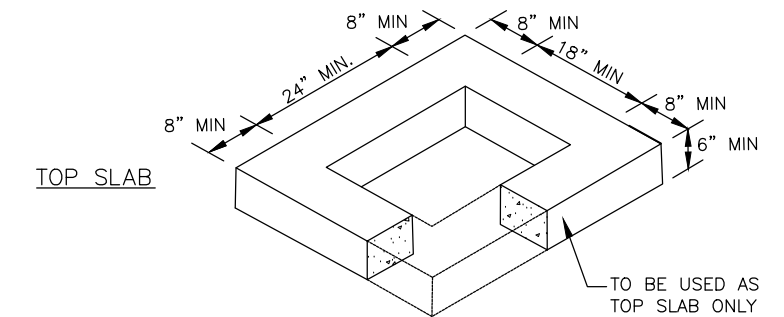
1. COMPACT D-1 BASE COURSE TO MINIMUM 95% OF MODIFIED PROCTOR DENSITY (ASTM D1557)
2. PROOF ROLL BOTTOM OF SUBCUT EXCAVATION SHALL BE PERFORMED USING A MINIMUM 10-TON SELF PROPELLED VIBRATORY COMPACTOR. A MINIMUM OF TWO (2) PASSES (ONE PASS EQUALS DOWN AND BACK) SHALL BE MADE OVER THE SUBCUT SOILS AND AS APPROVED BY THE ENGINEER.



2
5 **PAVEMENT MATCH JOINT**
SCALE: NOT TO SCALE

DETAIL 2/5 NOTES:

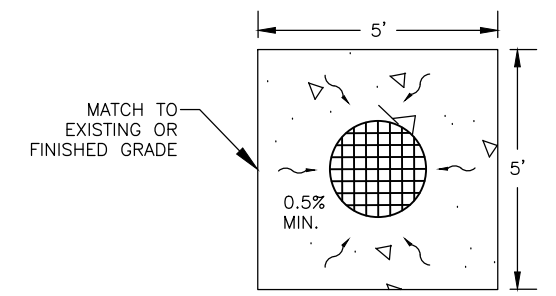
1. FINAL SAWCUT OF EXISTING ASPHALT SHALL NOT BE MADE UNTIL 24 HOURS PRIOR TO PAVING.



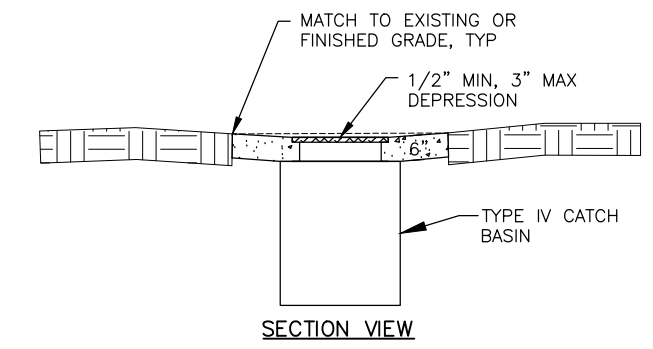
3
5 **INLET, TYPE IV**
SCALE: NOT TO SCALE

DETAIL 3/5 NOTES:

1. ENTIRE KNOCKOUT IS TO BE REMOVED AND SEALED SHUT AROUND PIPE. ALL PIPES ARE TO EXTEND MIN. 1" AND MAX. 2" INTO CATCH BASIN.
2. THE AREA BETWEEN THE TOP OF THE CATCH BASIN AND THE FRAME SHALL BE FORMED AND FILLED WITH CONCRETE OR NON-SHRINK GROUT. NO BRICKS, WOOD OR OTHER MATERIALS PERMITTED FOR ADJUSTING GRADE.
3. FRAME AND GRATE SHALL BE DUCTILE IRON. FRAME MAY BE CAST INTO THE TOP UNIT OR PLACED OVER THE OPENING AS APPROVED BY THE ENGINEER. FRAME AND GRATE MUST BE OF A TYPE THAT WILL NOT CREATE A HAZARD FOR BICYCLE TRAFFIC.
4. CATCH BASIN SHALL MEET HIGHWAY STANDARD-20 LOAD REQUIREMENTS.
5. MINIMUM STEEL REQUIRED AS PER ASTM C-478-69.
6. MINIMUM SUMP DEPTH SHALL BE 16".

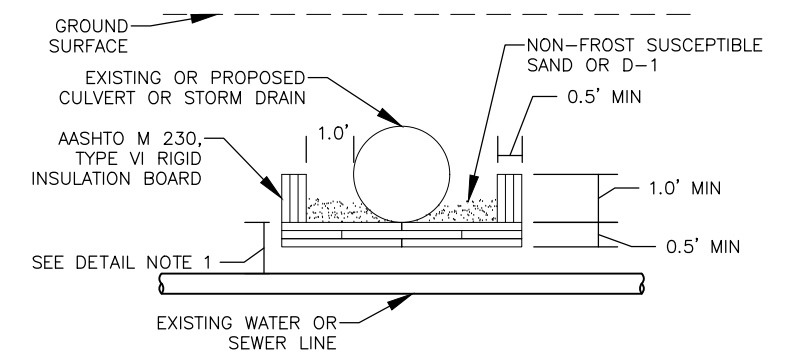


PLAN VIEW



SECTION VIEW

4
5 **CONCRETE AREA DRAIN DETAIL**
SCALE: NOT TO SCALE



UTILITY CROSSING

5
5 **WATER LINE INSULATION DETAILS**
SCALE: NOT TO SCALE

DETAIL 5/5 NOTES:

1. INSTALL INSULATION AS SHOWN WHEN DISTANCE IS LESS THAN 6.0'.
2. PIPE INSULATION SHALL BE 8'-0" IN LENGTH, CENTERED OVER WATER LINE OR WATER SERVICE.
3. PIPE INSULATION WITH R-FACTOR EQUAL TO RIGID BOARD MAY BE SUBSTITUTED IF APPROVED BY THE ENGINEER.
4. CROSSING SHALL BE PROTECTED WITH A MINIMUM 6" OF INSULATION BOARDS WITH A 12" OVERLAP, AS SHOWN.

95%
DRAFT
FOR REVIEW ONLY

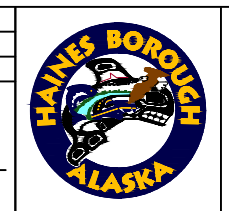
RECORD OF REVISIONS			
No.	DATE	DESCRIPTION	BY

proHNS LLC
CERTIFICATE OF AUTHORIZATION #100662

DRAWN BY: E. ROEMELING
DESIGNED BY: E. ROEMELING
CHECKED BY: L. CHAMBERS

219 MAIN ST #13
HAINE, AK 99827
2201 DUNN STREET #2
JUNEAU, AK 99801
(907) 780-4004

solutions@proHNS.com
www.proHNS.com



HAINE BOROUGH VISITOR CENTER PARKING LOT

CONSTRUCTION DETAILS

SHEET NUMBER
5
OF
6