

DESIGN SPECIFICATIONS:

WIND: 125 MPH, 3 SECOND GUST ULTIMATE
 WAVE: SIGNIFICANT WAVE 4.1 FT, 3.8 SECOND PERIOD - NORTH
 SIGNIFICANT WAVE 3.1 FT, 3.1 SECOND PERIOD - WEST
 CURRENT: NONE
 BOAT:
 BUOYANT LIVE LOAD: 40 PSF

NOTE:

EXISTING ANCHOR SYSTEM TO BE RE-USED. CONDITION AND LOAD CAPACITY OF ANCHOR SYSTEM ARE UNKNOWN, AND ARE THE RESPONSIBILITY OF THE OWNER.

SITE PLAN

PRELIMINARY 10/27/2023

REV	BY	DATE	DESCRIPTION

AJD
ENGINEERING
 p (360) 770-1746
 f (360) 766-6013
 allen@ajdengineering.com

TRANSPAC
MARINAS

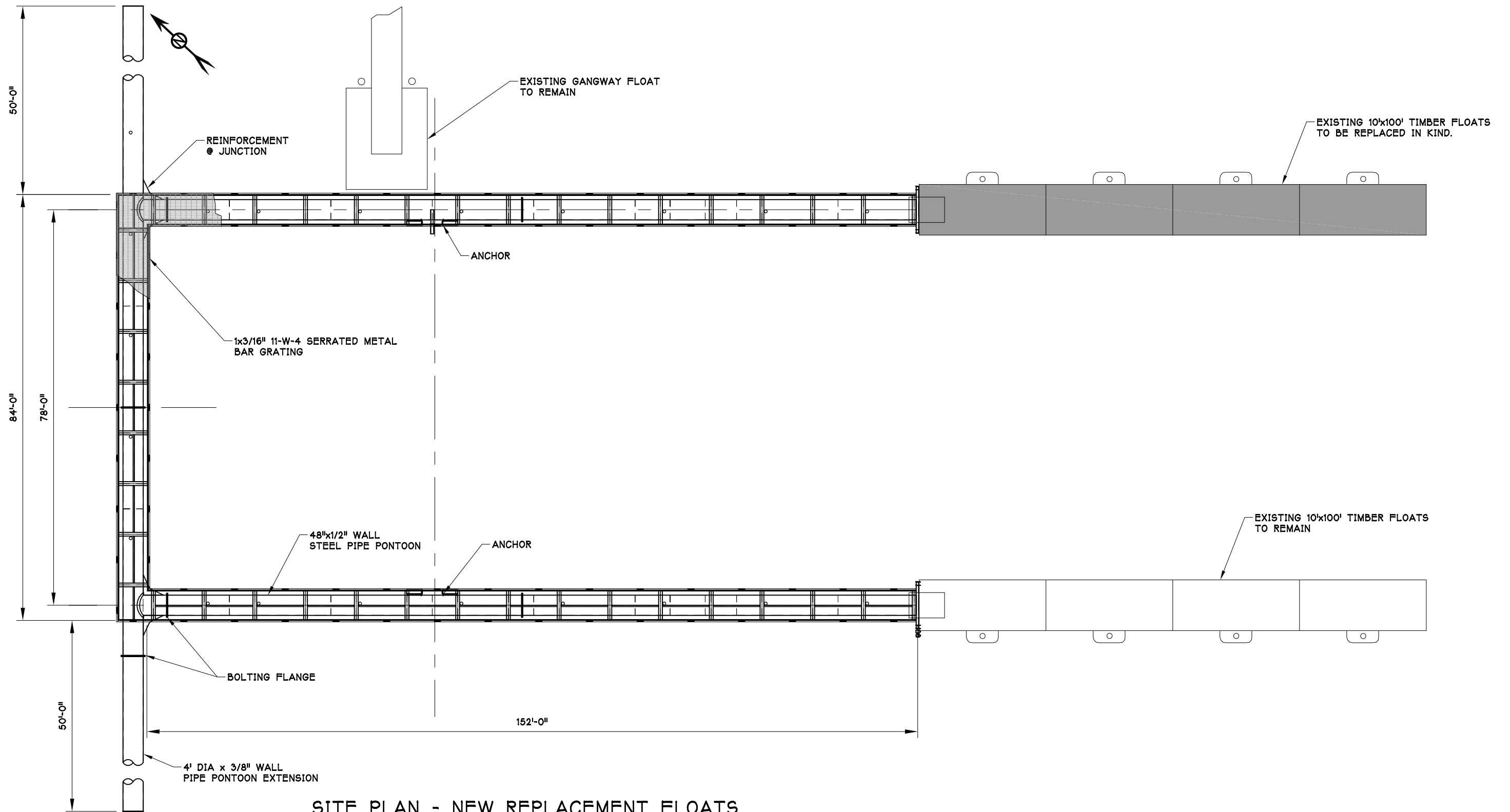
HAINES BOROUGH
 LETNIKOF COVE HARBOR
 SITE PLAN
 EXISTING CONDITIONS

P.O. BOX 1169
 ANACORTES
 WASHINGTON
 U.S.A. 98221
 (360) 293-8888

DATE:	JOB NO. 23_120_A	SHEET: 1 OF 1	REVISED:
DRAWN BY: AJD	CHECKED BY:	APPROVED BY: DJJ	

THIS DRAWING IS THE PROPERTY OF AND CONTAINS INFORMATION WHICH BELONGS TO TRANSPAC MARINAS, INC. IT IS BEING LOANED WITH THE UNDERSTANDING THAT IT MAY NOT BE REPRODUCED OR USED IN ANY WAY THAT WOULD BE INJURIOUS TO TRANSPAC'S INTERESTS. DETAILS MAY BE PROTECTED UNDER ONE OR MORE OF THE FOLLOWING U.S. PATENTS: 4,709,647 -4,887,654 -4,940,021 -5,347,948 -5,529,012 -6,450,737 -7,390,141 -8,136,468 -8,287,208 -8,308,397 -8,317,429 -8,506,205

Not For Distribution



SITE PLAN - NEW REPLACEMENT FLOATS

PRELIMINARY 10/27/2023

Not For Distribution

REV	BY	DATE	DESCRIPTION

AJD
ENGINEERING
p (360) 770-1746
f (360) 766-6013
allen@ajdengeering.com

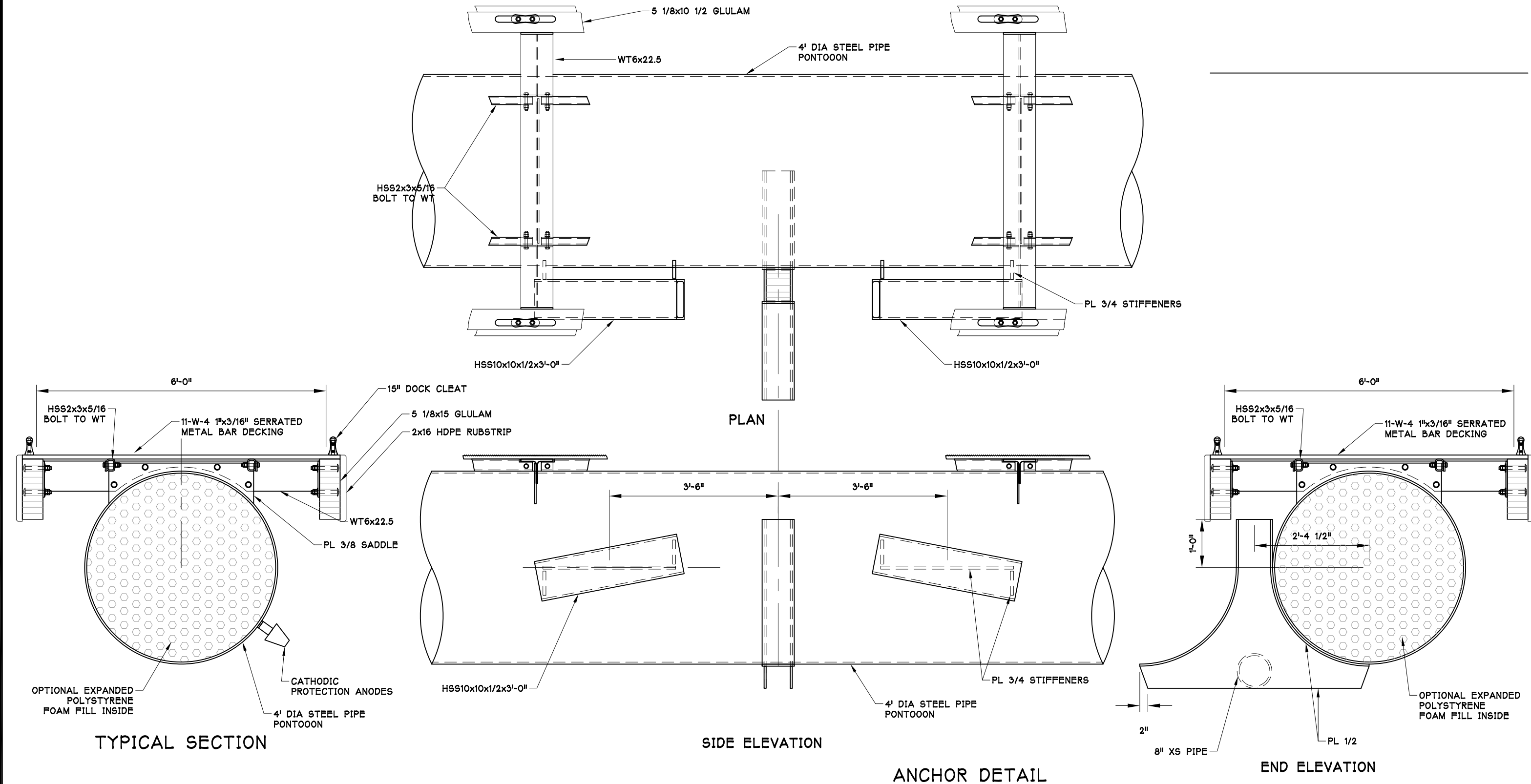
TRANSPAC
MARINAS
P.O. BOX 1169
ANACORTES
WASHINGTON
U.S.A. 98221
(360) 293-8888

HAINES BOROUGH
LETNIKOF COVE HARBOR
ENLARGED PLAN
NEW FLOATS

DATE:	JOB NO. 23_120_A	SHEET: 2 OF 4	REVISED:
DRAWN BY: AJD	CHECKED BY:	APPROVED BY: DJJ	

THIS DRAWING IS THE PROPERTY OF AND CONTAINS INFORMATION WHICH BELONGS TO TRANSPAC MARINAS, INC. IT IS BEING LOANED WITH THE UNDERSTANDING THAT IT MAY NOT BE REPRODUCED OR USED IN ANY WAY THAT WOULD BE INJURIOUS TO TRANSPAC'S INTERESTS. DETAILS MAY BE PROTECTED UNDER ONE OR MORE OF THE FOLLOWING U.S. PATENTS: 4,709,647 -4,887,654 -4,940,021 -5,347,948 -5,529,012 -6,450,737 -7,390,141 -8,136,468 -8,287,208 -8,308,397 -8,317,429 -8,506,205

Not For Distribution



PRELIMINARY 10/27/2023

REV	BY	DATE	DESCRIPTION

AJD
ENGINEERING
p (360) 770-1746
f (360) 766-6013
allen@ajdengineering.com

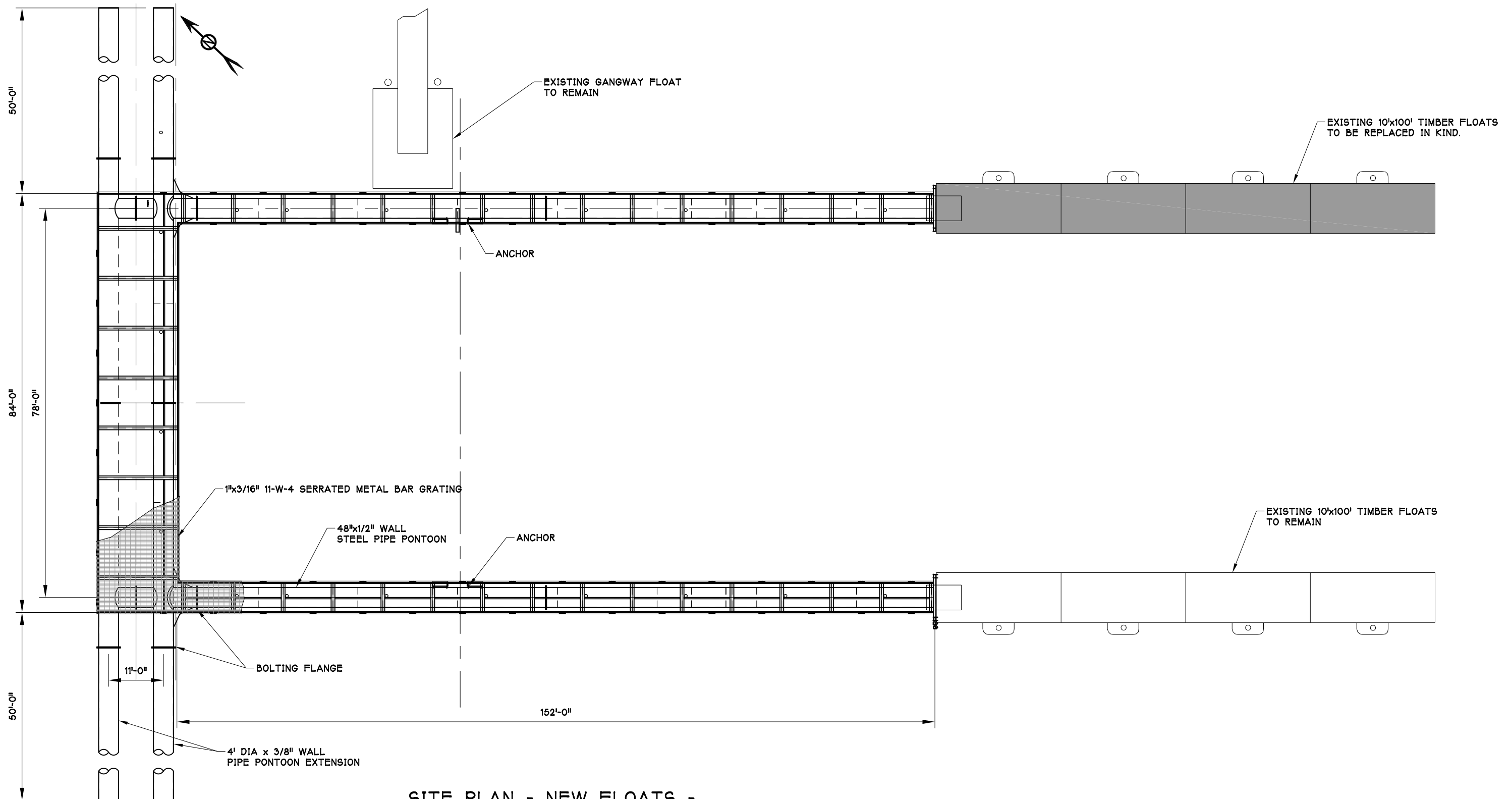
TRANSPAC
MARINAS

HAINES BOROUGH
LETNIKOF COVE HARBOR
REPLACEMENT
FLOAT DETAILS

P.O. BOX 1169
ANACORTES
WASHINGTON
U.S.A. 98221
(360) 293-8888

DATE:	JOB NO. 23_120_A	SHEET: OF 3	REVISED:
DRAWN BY: AJD	CHECKED BY:	APPROVED BY: DJJ	

THIS DRAWING IS THE PROPERTY OF AND CONTAINS INFORMATION WHICH BELONGS TO TRANSPAC MARINAS, INC. IT IS BEING LOANED WITH THE UNDERSTANDING THAT IT MAY NOT BE REPRODUCED OR USED IN ANY WAY THAT WOULD BE INJURIOUS TO TRANSPAC'S INTERESTS. DETAILS MAY BE PROTECTED UNDER ONE OR MORE OF THE FOLLOWING U.S. PATENTS: 4,709,647 -4,887,654 -4,940,021 -5,347,948 -5,529,012 -6,450,737 -7,390,141 -8,136,468 -8,287,208 -8,308,397 -8,317,429 -8,506,205



SITE PLAN - NEW FLOATS -
OPTIONAL DOUBLE NORTH BREAKWATER

PRELIMINARY 10/27/2023

Not For Distribution

REV	BY	DATE	DESCRIPTION

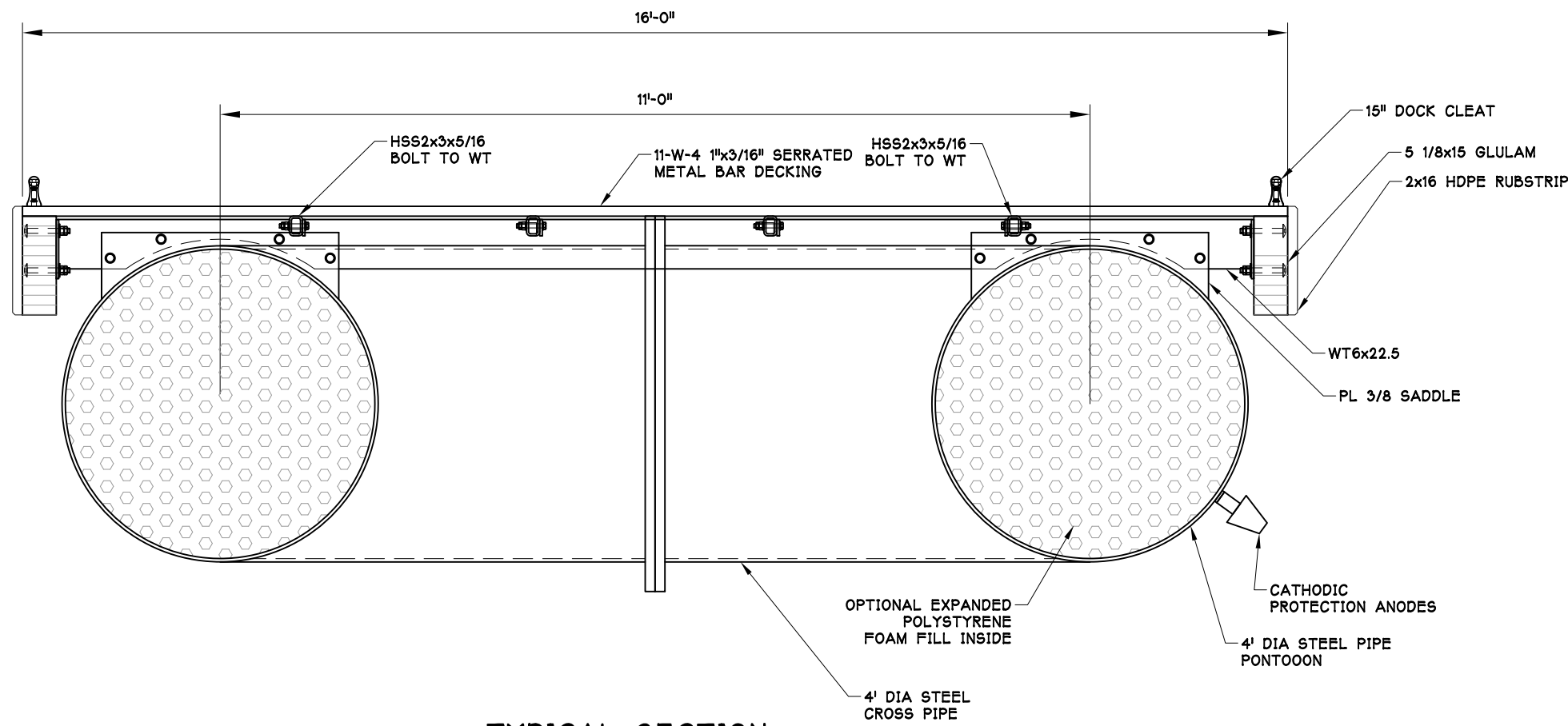
AJD
ENGINEERING
p (360) 770-1746
f (360) 766-6013
allen@ajdengineering.com

TRANSPAC
MARINAS
P.O. BOX 1169
ANACORTES
WASHINGTON
U.S.A. 98221
(360) 293-8888

**HAINES BOROUGH
LETNIKOF COVE HARBOR
DOUBLE FLOAT OPTION**

DATE:	JOB NO. 23_120_A	SHEET: OF 4	REVISED:
DRAWN BY: AJD	CHECKED BY:	APPROVED BY: DJJ	

THIS DRAWING IS THE PROPERTY OF AND CONTAINS INFORMATION WHICH BELONGS TO TRANSPAC MARINAS, INC. IT IS BEING LOANED WITH THE UNDERSTANDING THAT IT MAY NOT BE REPRODUCED OR USED IN ANY WAY THAT WOULD BE INJURIOUS TO TRANSPAC'S INTERESTS. DETAILS MAY BE PROTECTED UNDER ONE OR MORE OF THE FOLLOWING U.S. PATENTS: 4,709,647 -4,887,654 -4,940,021 -5,347,948 -5,529,012 -6,450,737 -7,390,141 -8,136,468 -8,287,208 -8,308,397 -8,317,429 -8,506,205



TYPICAL SECTION

PRELIMINARY 10/27/2023

Not For Distribution

REV	BY	DATE	DESCRIPTION

AJD
ENGINEERING
p (360) 770-1746
f (360) 766-6013
allen@ajdengineering.com



HAINES BOROUGH
LETNIKOF COVE HARBOR
DOUBLE FLOAT OPTION
ENLARGED SECTION

THIS DRAWING IS THE PROPERTY OF AND CONTAINS INFORMATION WHICH BELONGS TO TRANSPAC MARINAS, INC. IT IS BEING LOANED WITH THE UNDERSTANDING THAT IT MAY NOT BE REPRODUCED OR USED IN ANY WAY THAT WOULD BE INJURIOUS TO TRANSPAC'S INTERESTS. DETAILS MAY BE PROTECTED UNDER ONE OR MORE OF THE FOLLOWING U.S. PATENTS: 4,709,647 -4,887,654 -4,940,021 -5,347,948 -5,529,012 -6,450,737 -7,390,141 -8,136,468 -8,287,208 -8,308,397 -8,317,429 -8,506,205

P.O. BOX 1169
ANACORTES
WASHINGTON
U.S.A. 98221
(360) 293-8888

DATE:	JOB NO. 23_120_A	SHEET: OF 5 ^	REVISED:
DRAWN BY: AJD	CHECKED BY:	APPROVED BY: DJJ	