

ATTIC INSULATION AREAS
SCALE: 1/16" = 1' - 0"

NOTES:

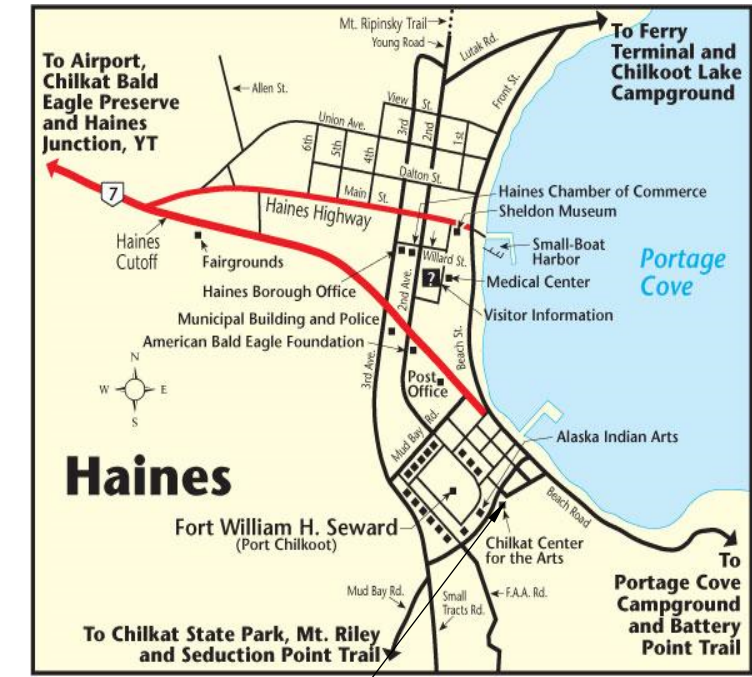
AREAS 1 AND 5: REMOVE EXISTING BATT INSULATION. FURNISH AND PLACE 5" OF FOAM INSULATION.

AREA 2: RETAIN EXISTING BATT INSULATION. USE INSULATION REMOVED FROM AREA 1 TO FILL ANY HOLES AND OPENINGS AND FRESHEN UP THE INSULATION.

AREA 3 HOUSES THE THEATER LIGHTING TROUGH. NO WORK IS REQUIRED.

AREA 4 IS A SLOPE CEILING. THE ONLY WORK NEEDED IS TO FILL THE VOID ON THE SOUTH SIDE WITH 600 CUBIC FEET OF BLOWN IN CELLULOSE INSULATION.

SPRAY FOAM SHALL BE NATURAL-THERM, CLOSED CELL, 2.0 IBS/IBW HFO SERIES, OR EQUAL.



PROJECT LOCATION



Haines Borough
PO Box 1209
Haines, Alaska 99827

Tel: (907)766-6400



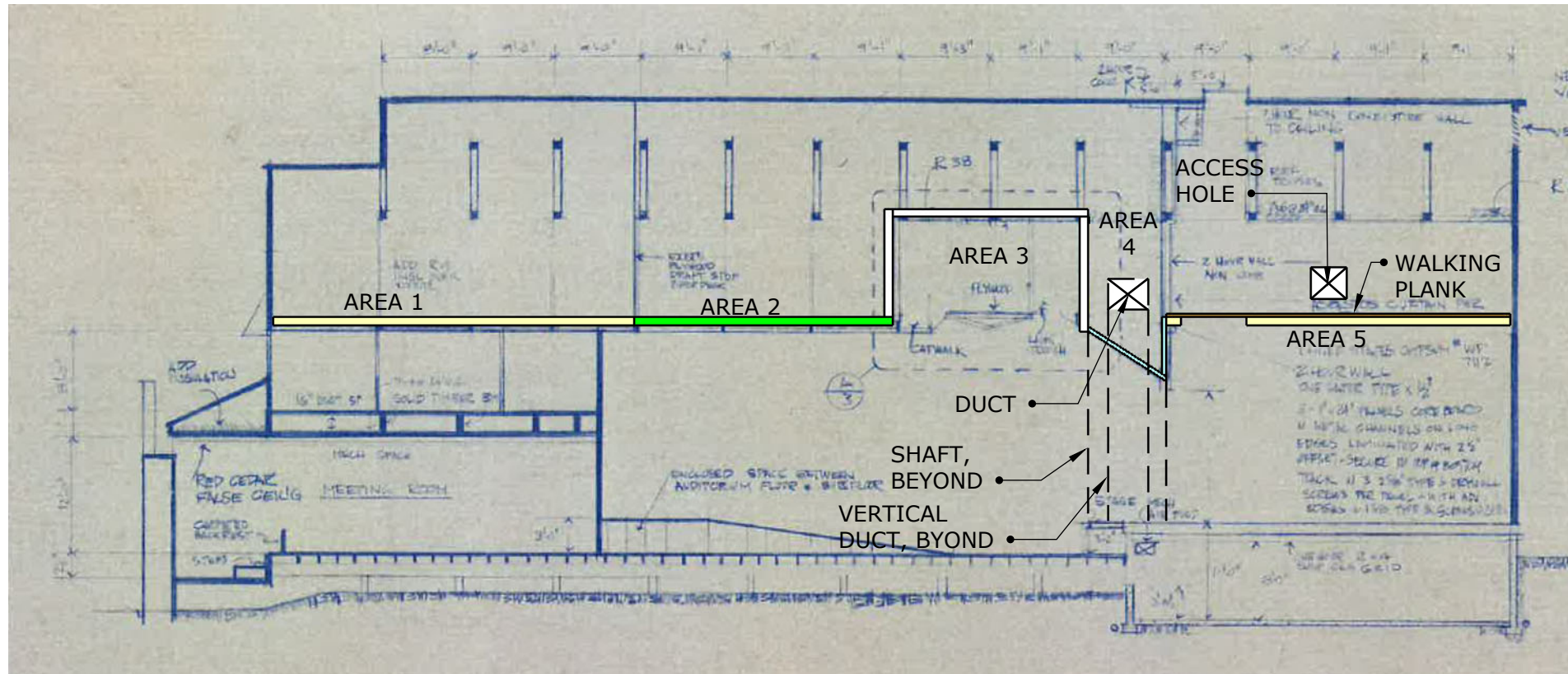
REVISION

REV	DATE	DESCRIPTION	DWN	CKD
A	AUG 23	ISSUED FOR BIDS	EGC	EGC

**HAINES BOROUGH
CHILKAT CENTER
ATTIC INSULATION, 2023**

**INSULATION
PLAN**

S01



ATTIC INSULATION SECTION
SCALE: 1/16" = 1' - 0"



Haines Borough
PO Box 1209
Haines, Alaska 99827
Tel: (907)766-6400



REVISION				
REV	DATE	DESCRIPTION	DWN	CKD
A	AUG 23	ISSUED FOR BIDS	EGC	EGC

HAINES BOROUGH
CHILKAT CENTER
ATTIC INSULATION, 2023

**INSULATION
SECTION**

S02