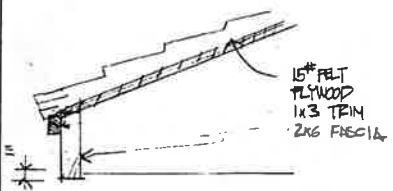
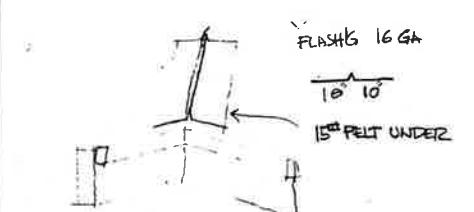


EXISTING ROOF
 1/2" PLY WOOD
 15# FELT
 2x6 FASCIA
 1x3 TRIM

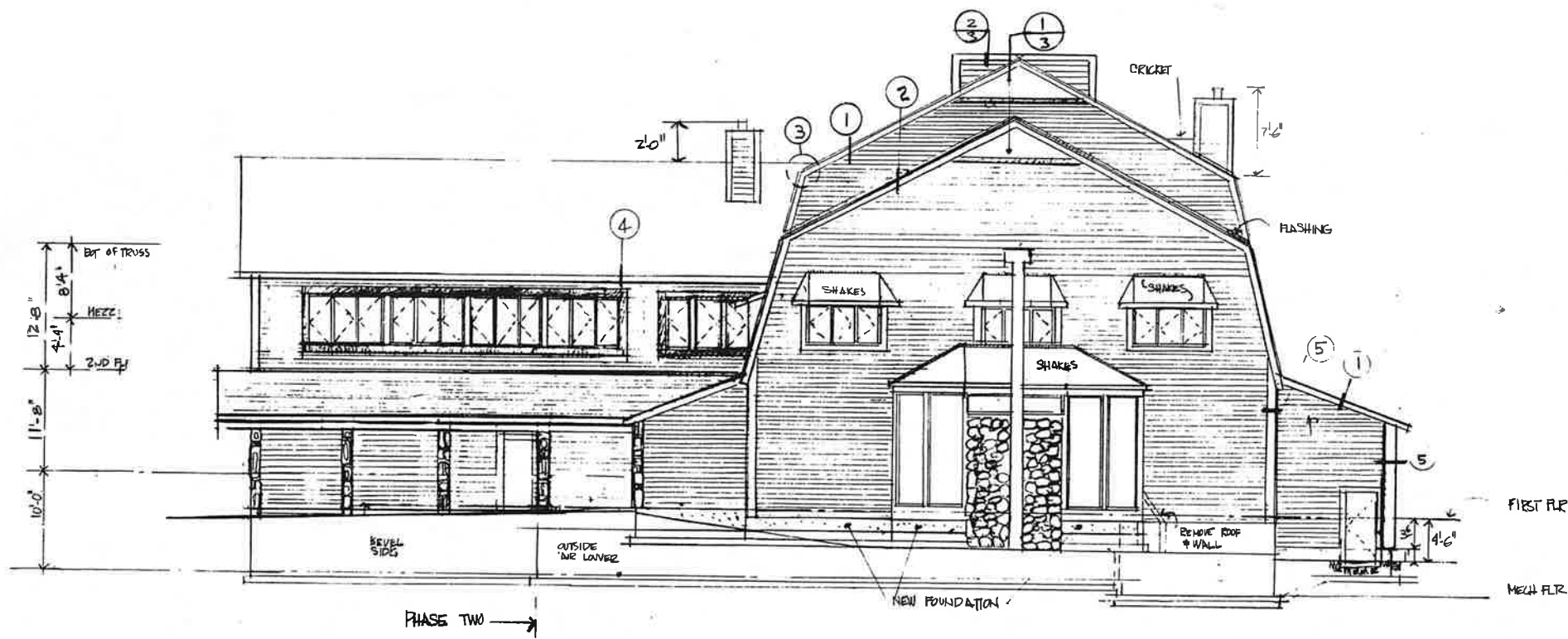
⑦ RAFTER TAILS 1/2"=1'-0"



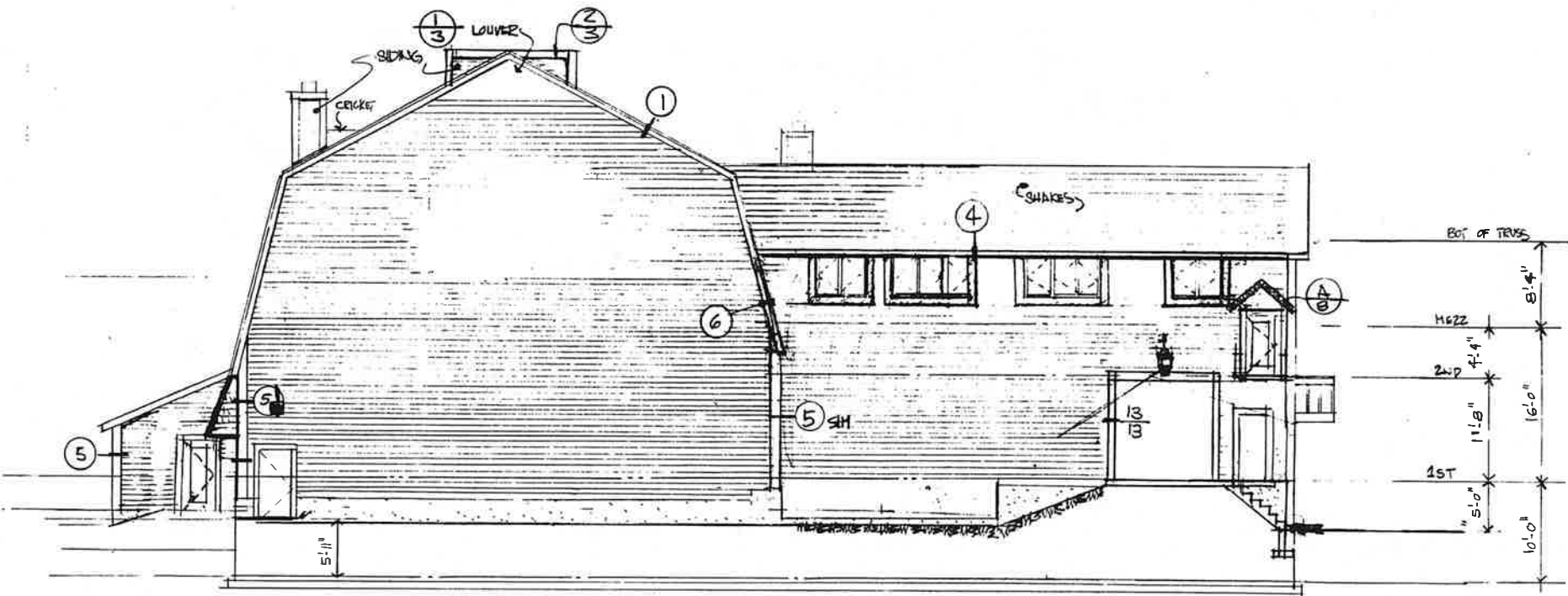
⑧ PORCH OVERHANG 1/2"=1'-0"



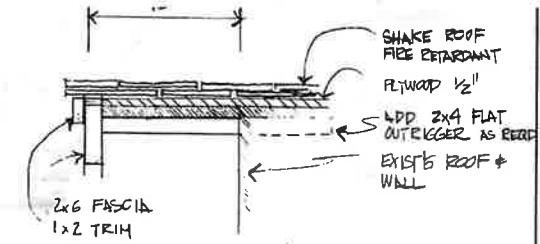
⑨ VALLEY FLASHING



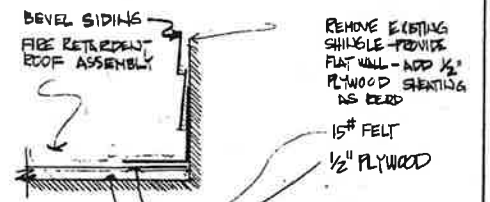
FRONT ELEVATION 1/8"=1'-0"



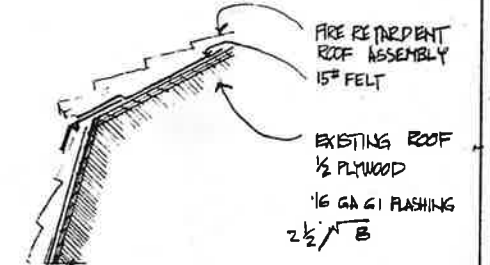
REAR ELEVATION 1/8"=1'-0"



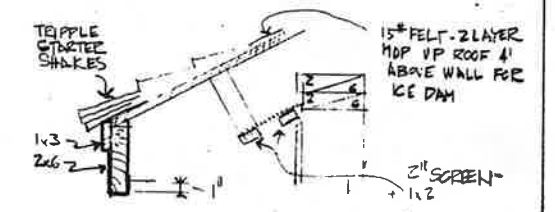
① EXIST'G OVERHANG 1/2"=1'-0"



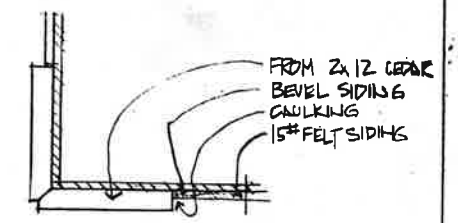
② FLASHING @ EXIST'G WALL 1/2"=1'-0"



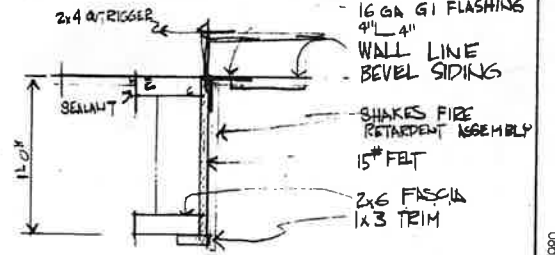
③ FLASHING @ ROOF BREAK 1/2"=1'-0"



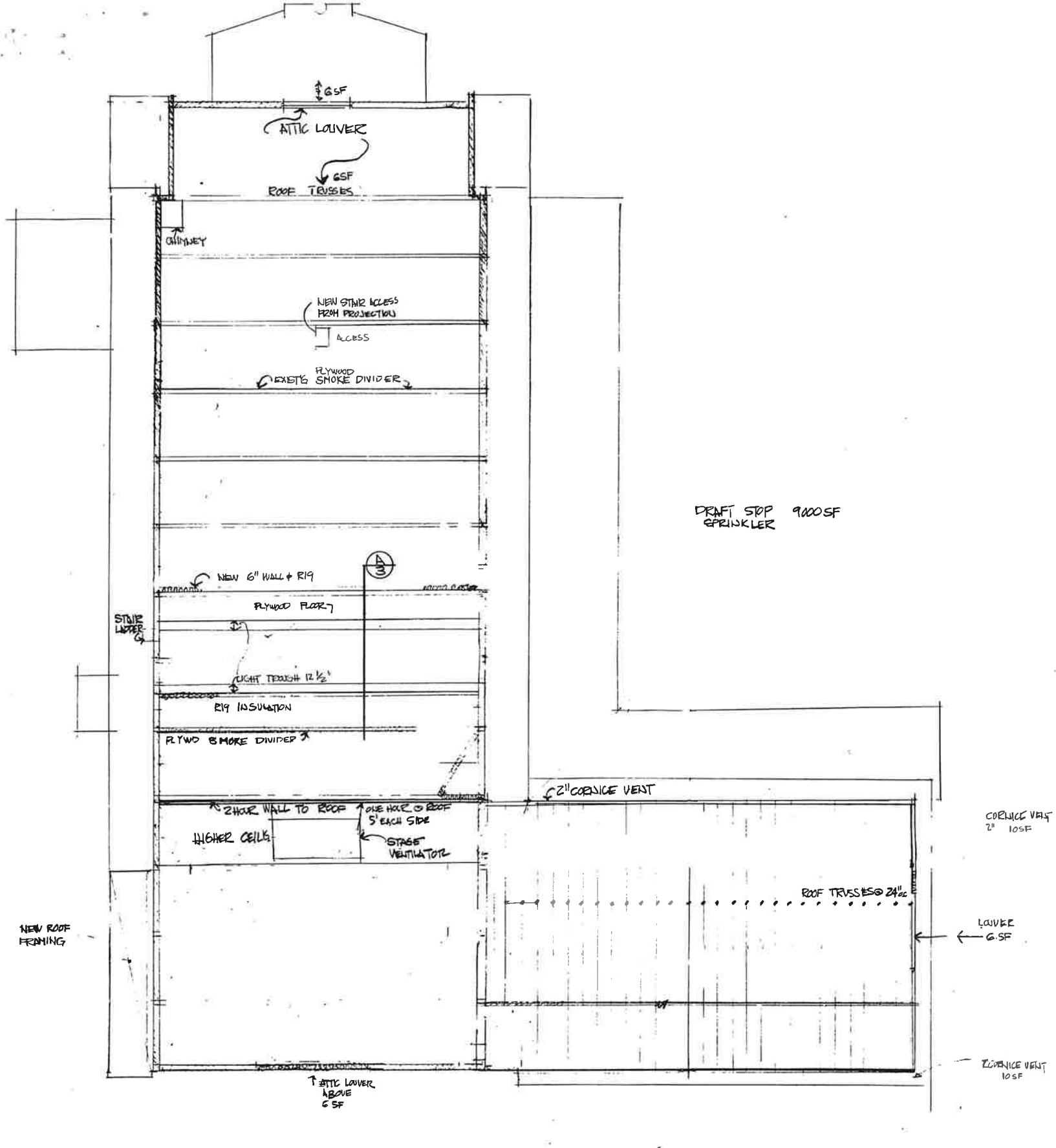
④ OVERHANG @ TRUSS 1/2"=1'-0"



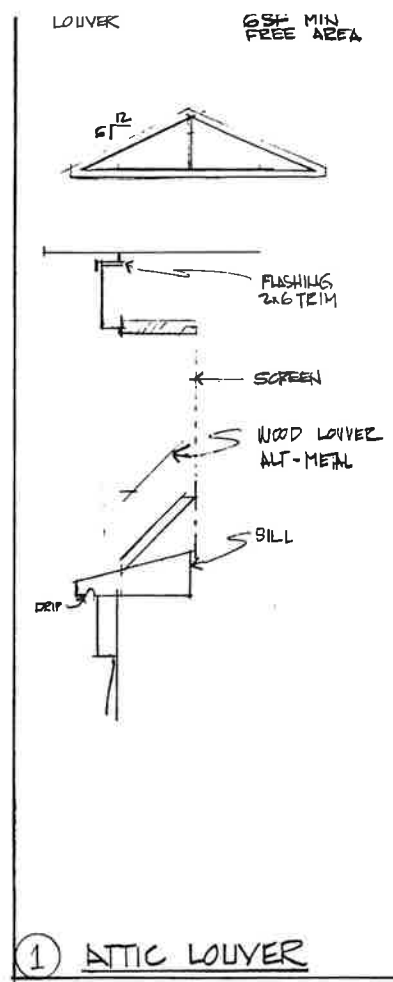
⑤ TYPICAL CORNER 1/2"=1'-0"



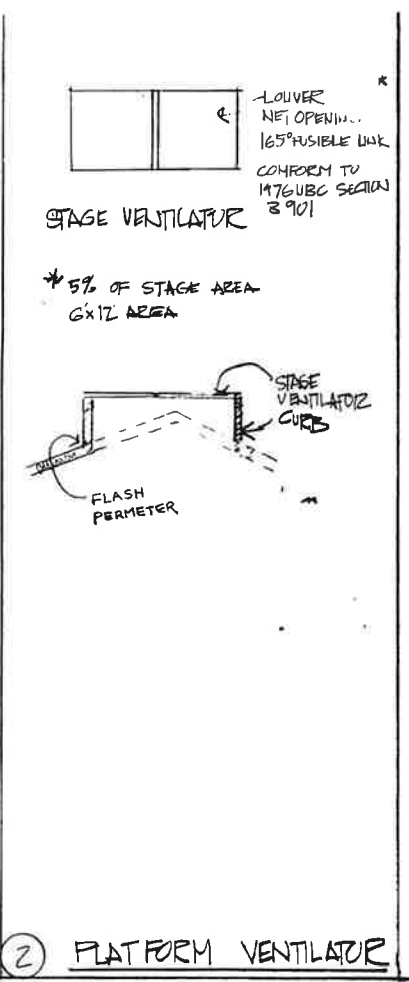
⑥ OVERHANG 1/2"=1'-0"



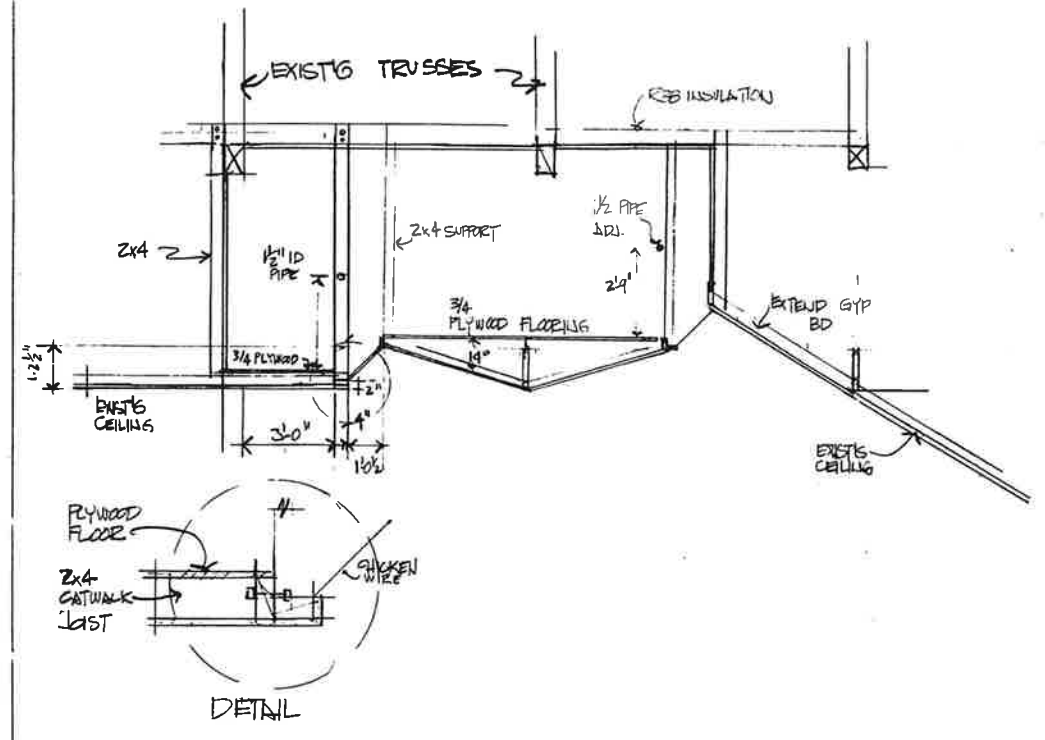
ATTIC PLAN 1/8"=1'-0"



1 ATTIC LOUVER

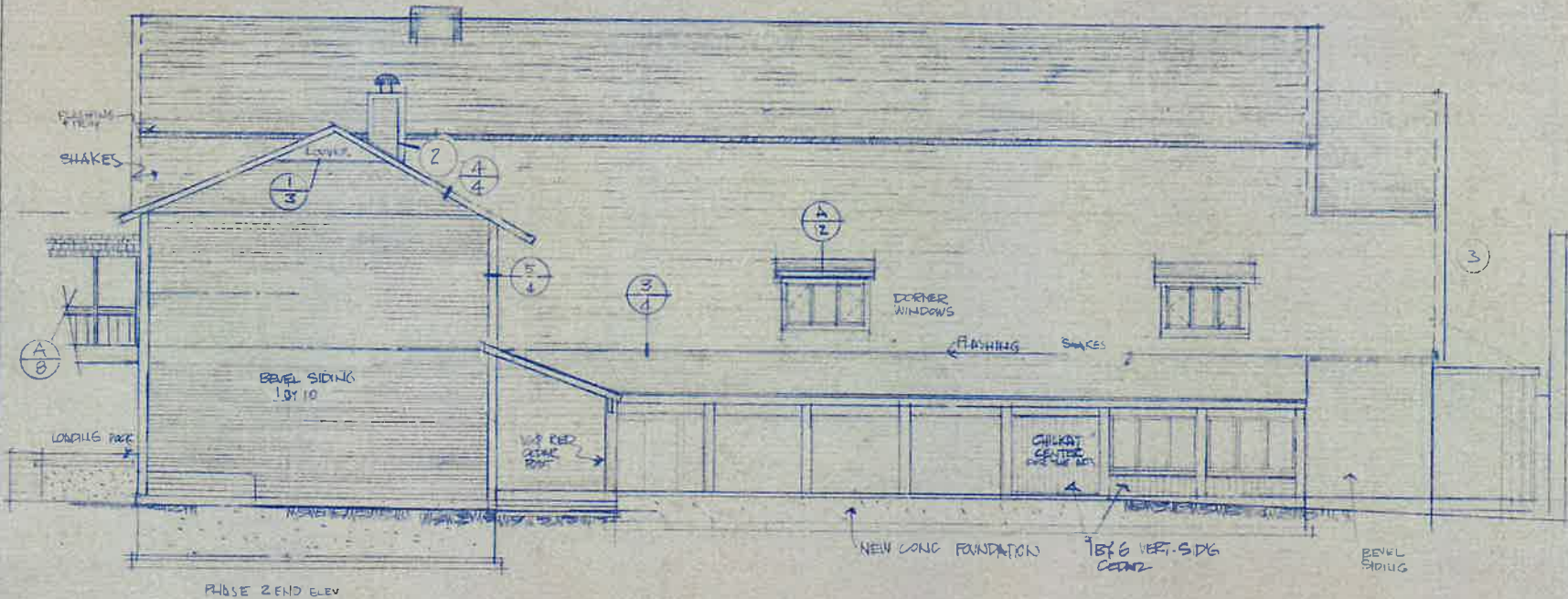


2 PLATFORM VENTILATOR

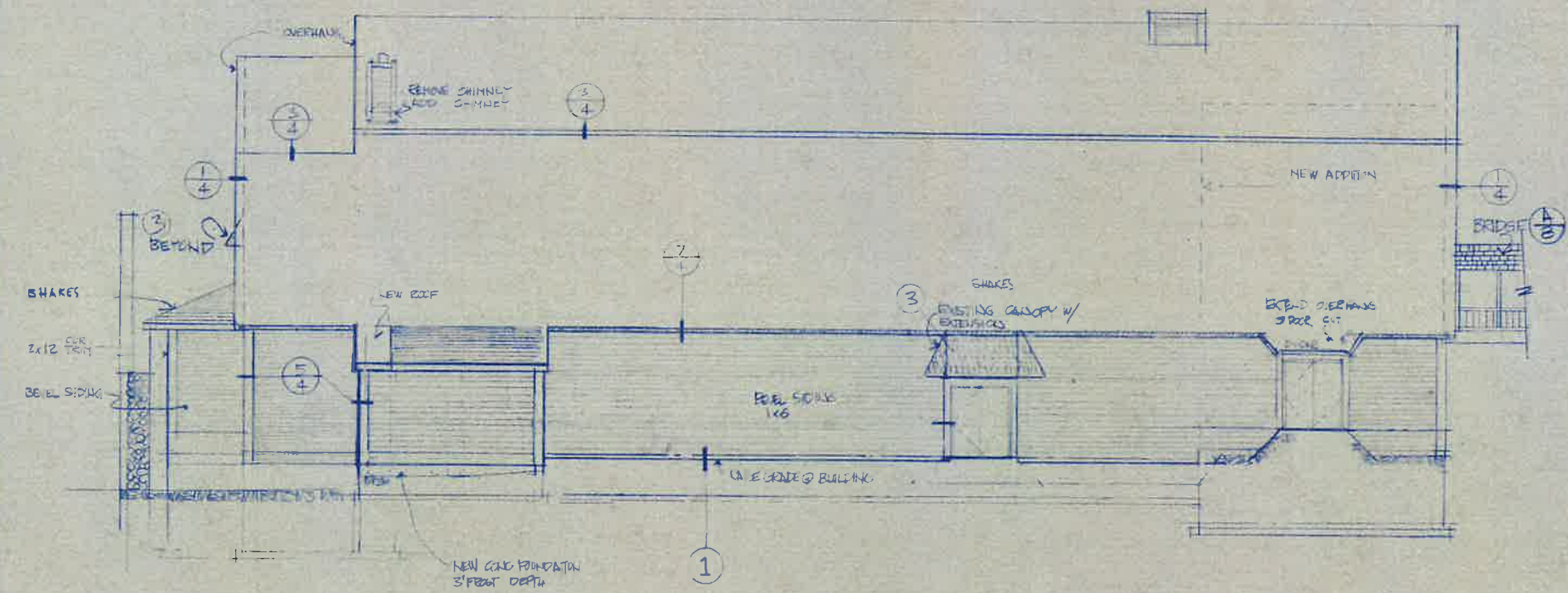


A SECTION THRU LIGHT TROUGH

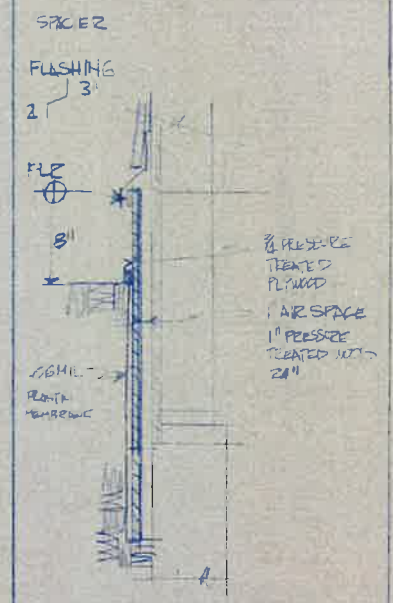
3/8"=1'-0"



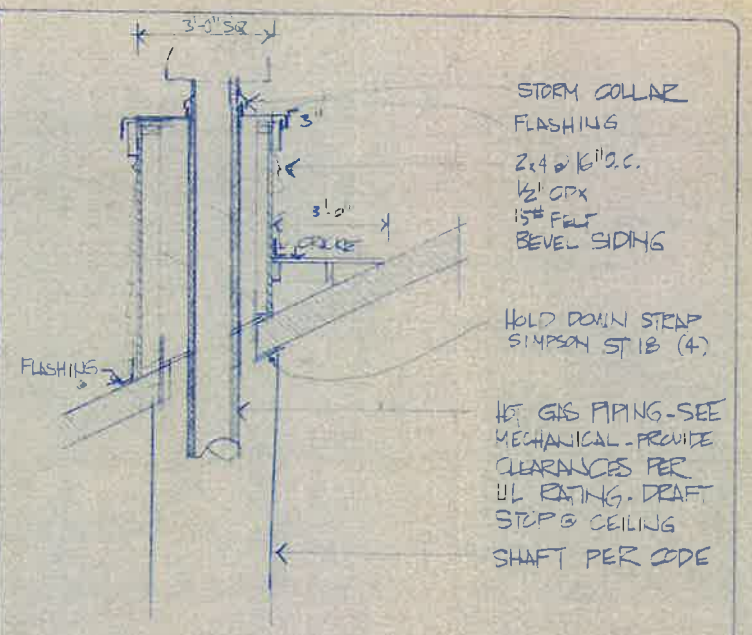
LEFT ELEVATION 1/8"=1'-0"



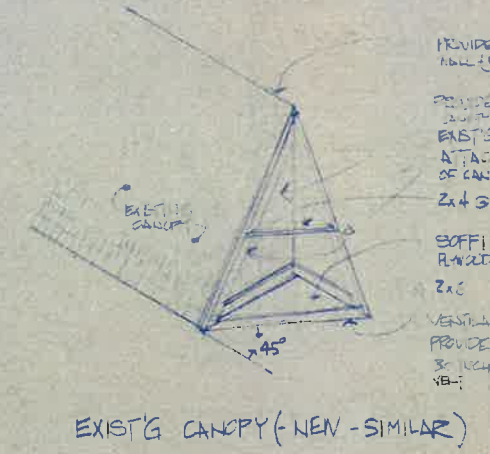
RIGHT ELEVATION 1/8"=1'-0"



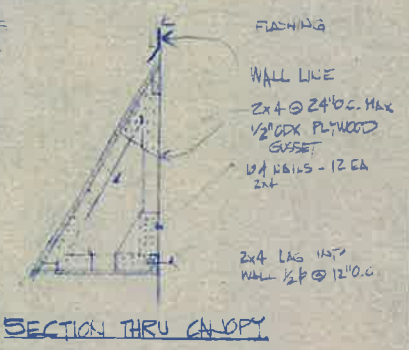
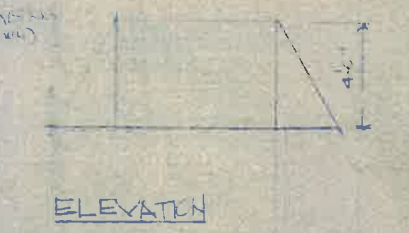
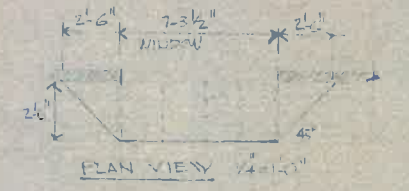
① FOUNDATION 1/2"=1'-0"



② CHIMMNEY



③ CANOPY DETAILS



THOMAS HUNTINGTON ARCHITECT
LUTAK CONSTRUCTION COMPANY

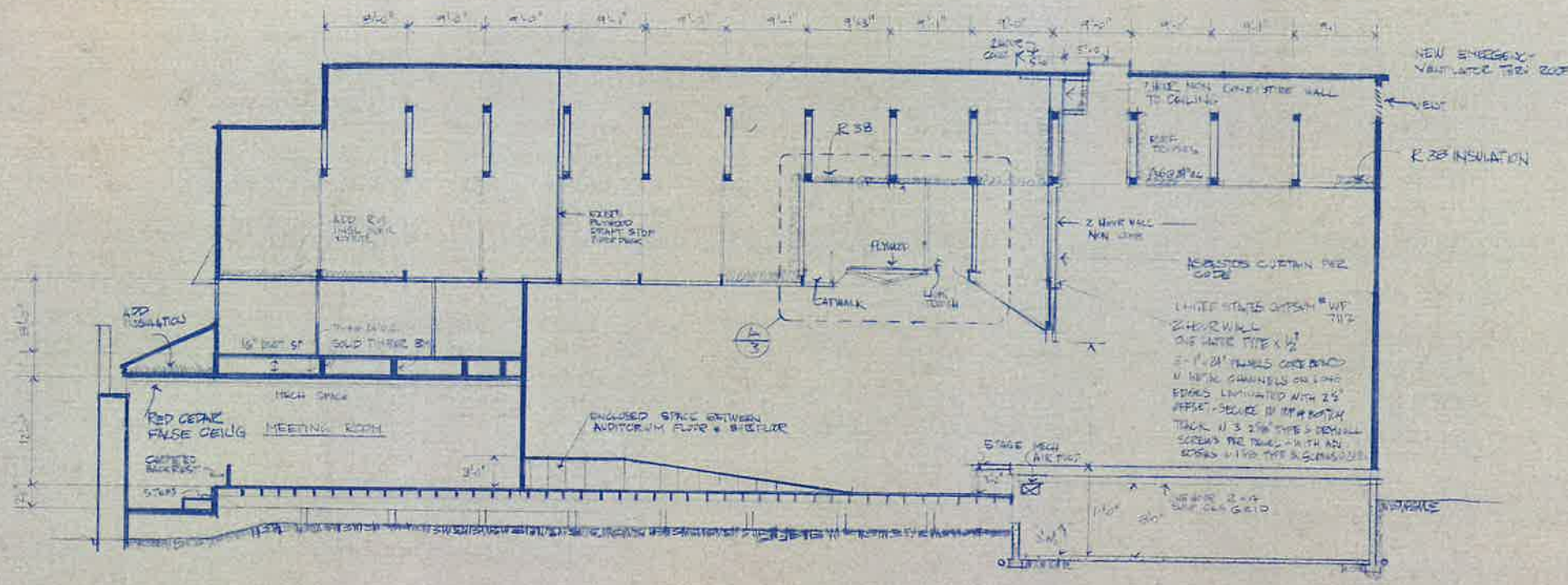
dsgr:	
dwgn:	
chkl:	
date:	
scale:	
horz:	
vert:	
rev. date by:	revision

emps engineering consultants
juneau alaska

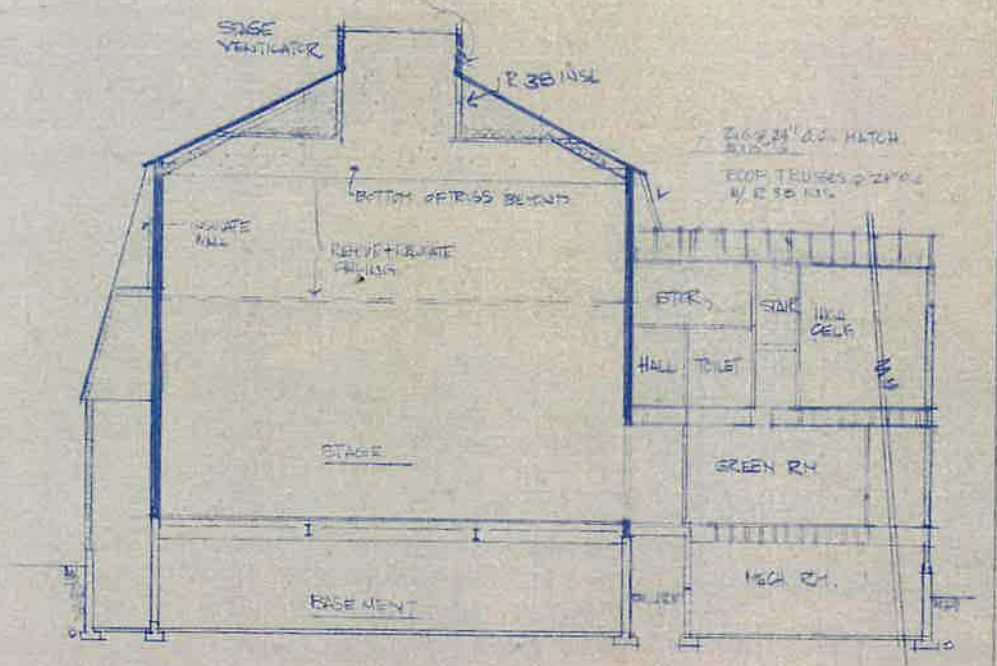
CHILKAT ARTS CENTER
HAINE, ALASKA

sheet 5 of 5
project no. 104

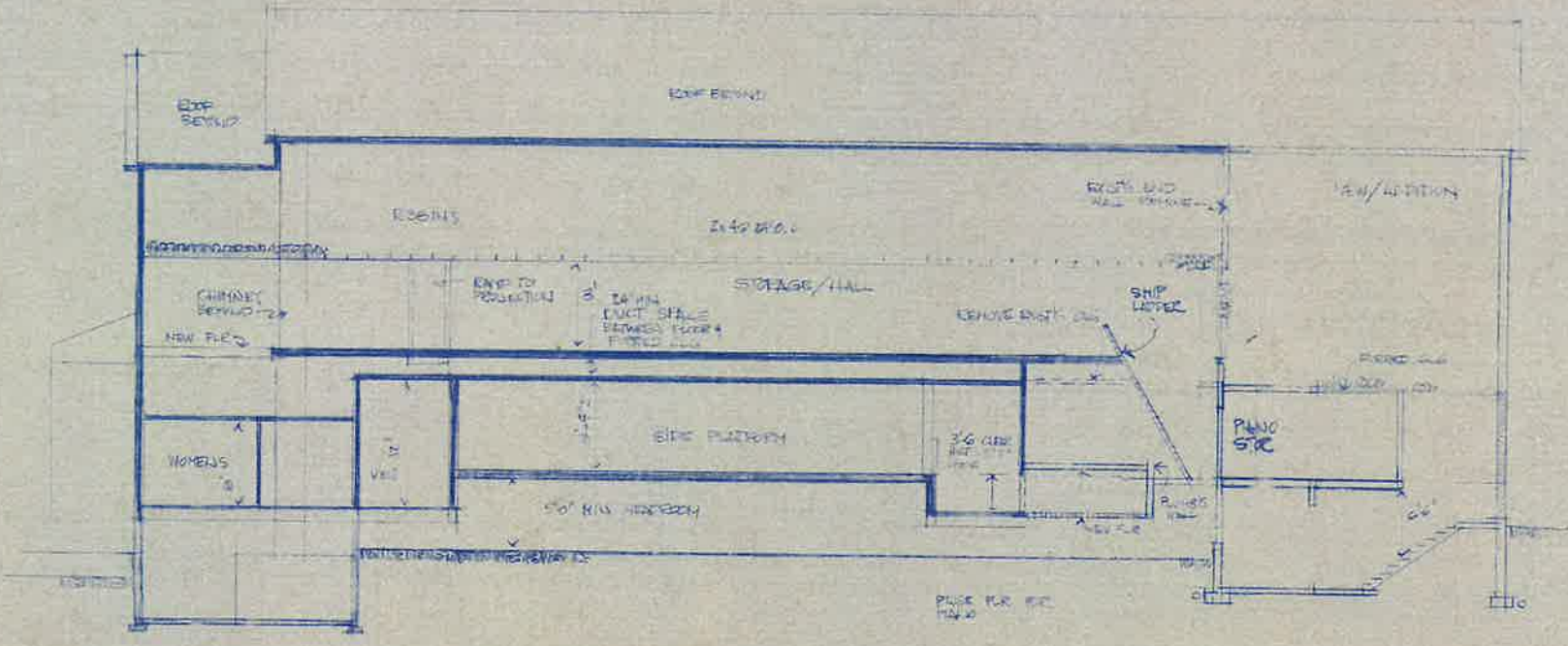
JUN 12 1990



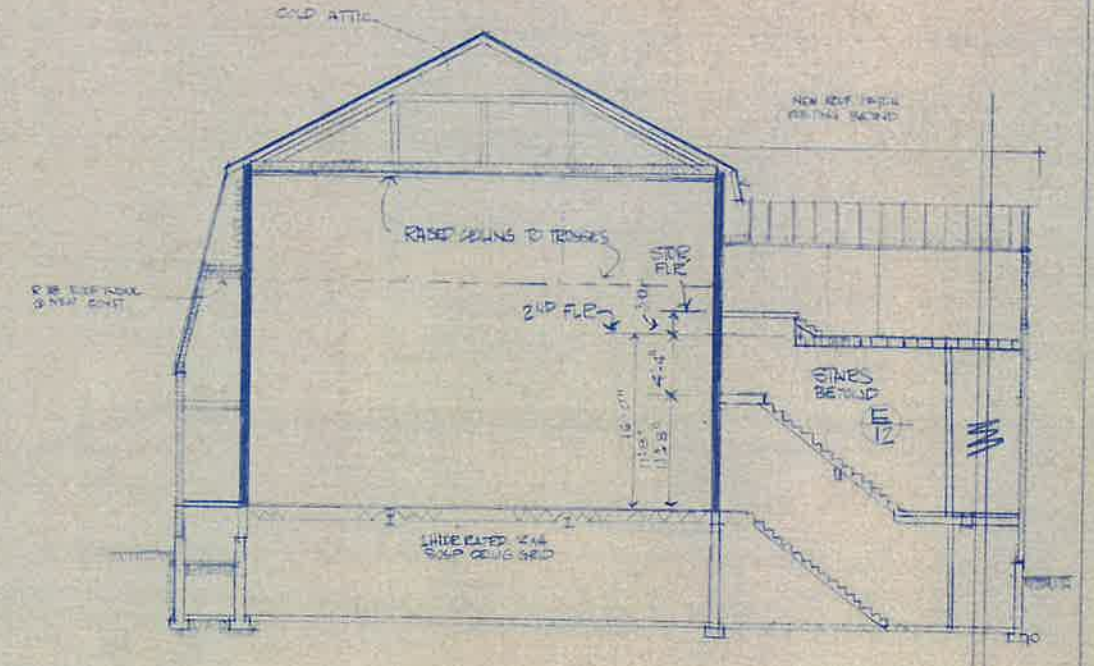
SECTION 1/8"=1'-0"



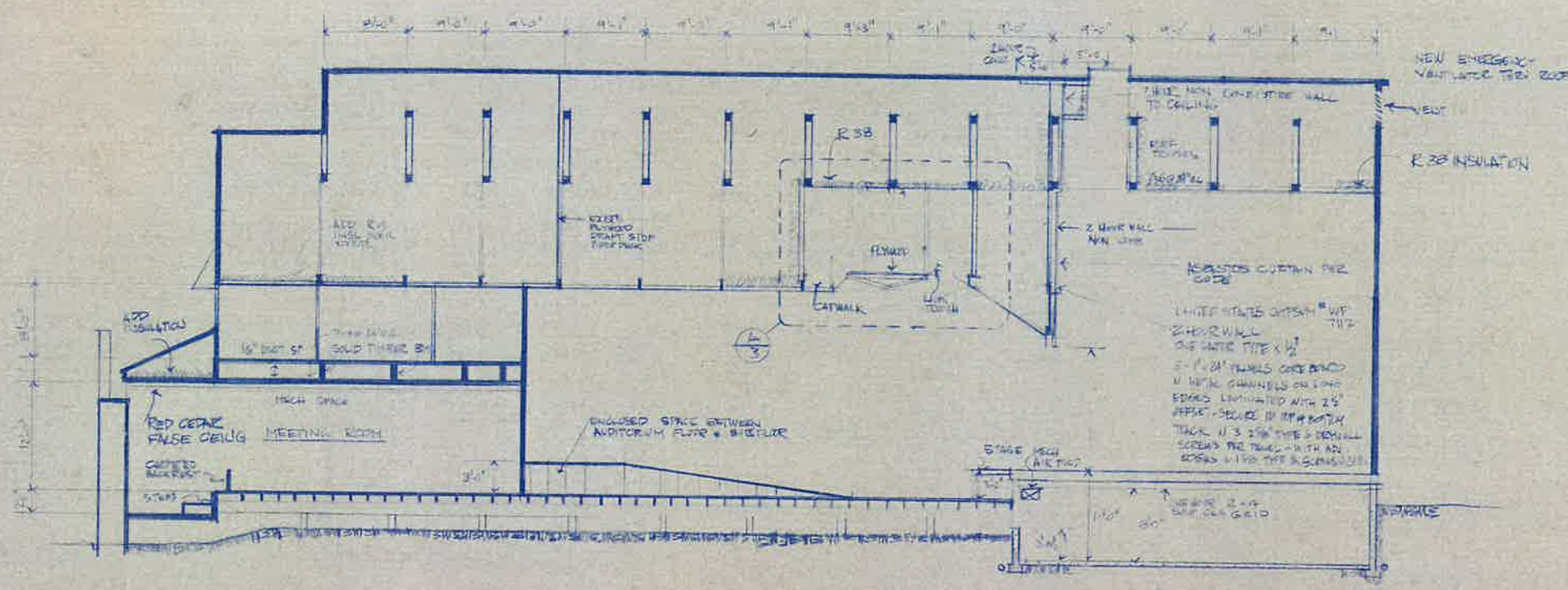
SECTION 1/8"=1'-0"



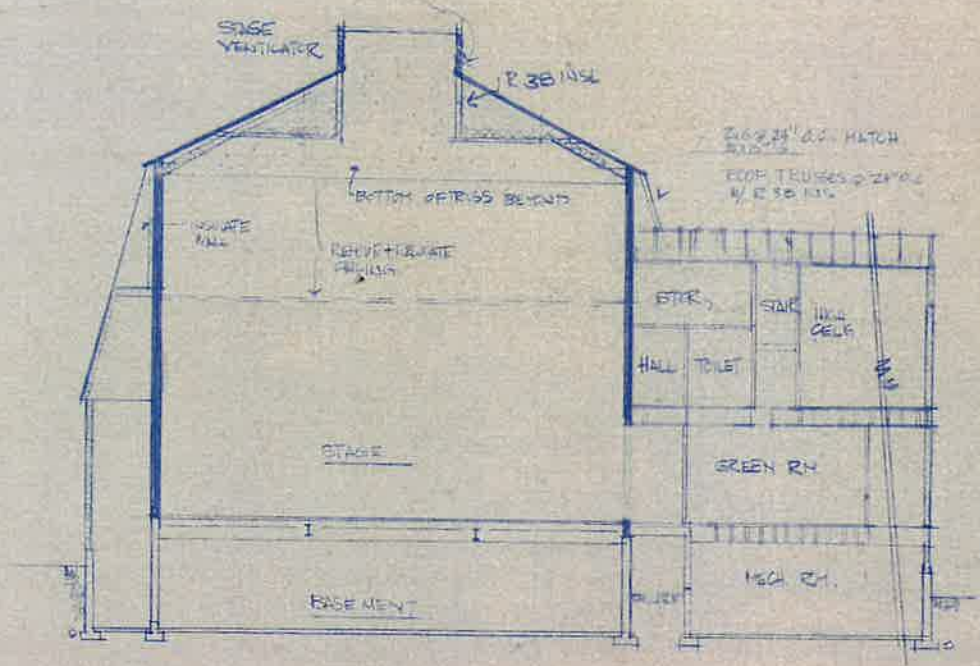
SECTION 1/8"=1'-0"



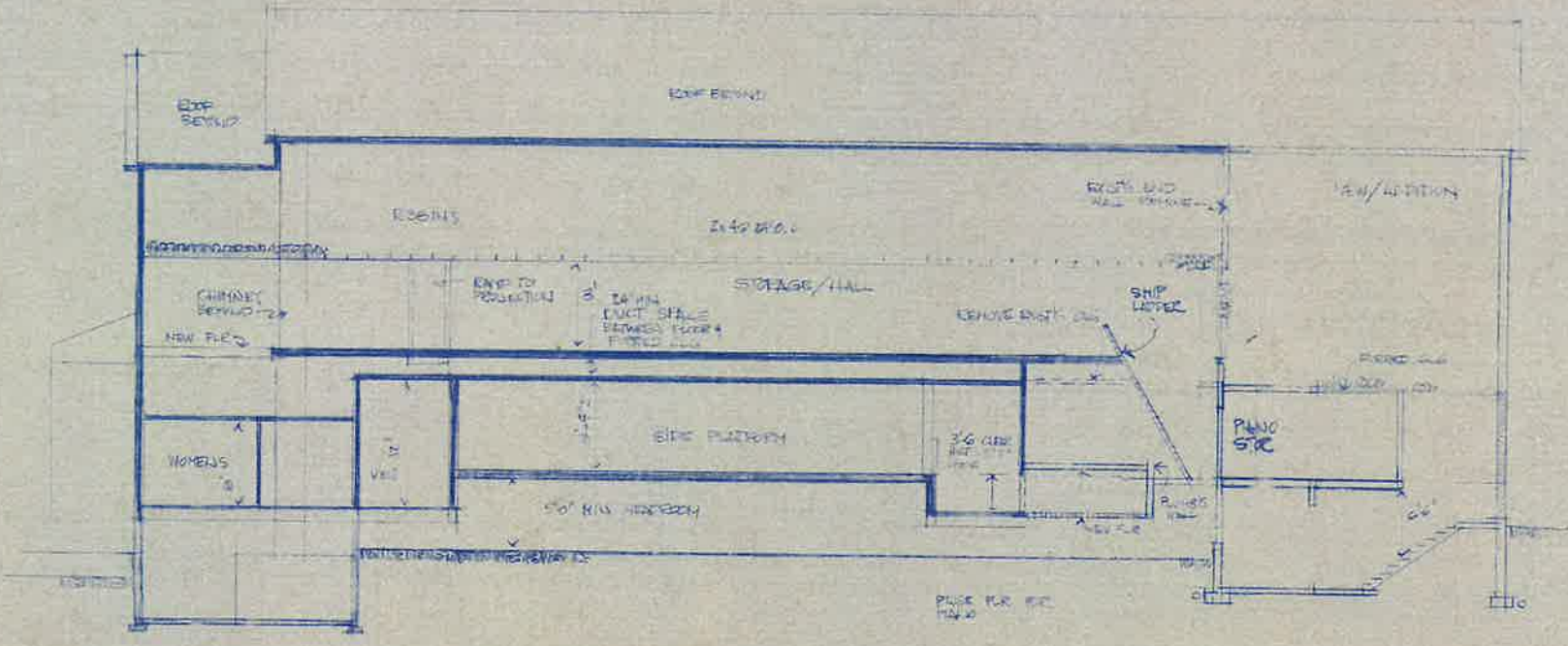
SECTION 1/8"=1'-0"



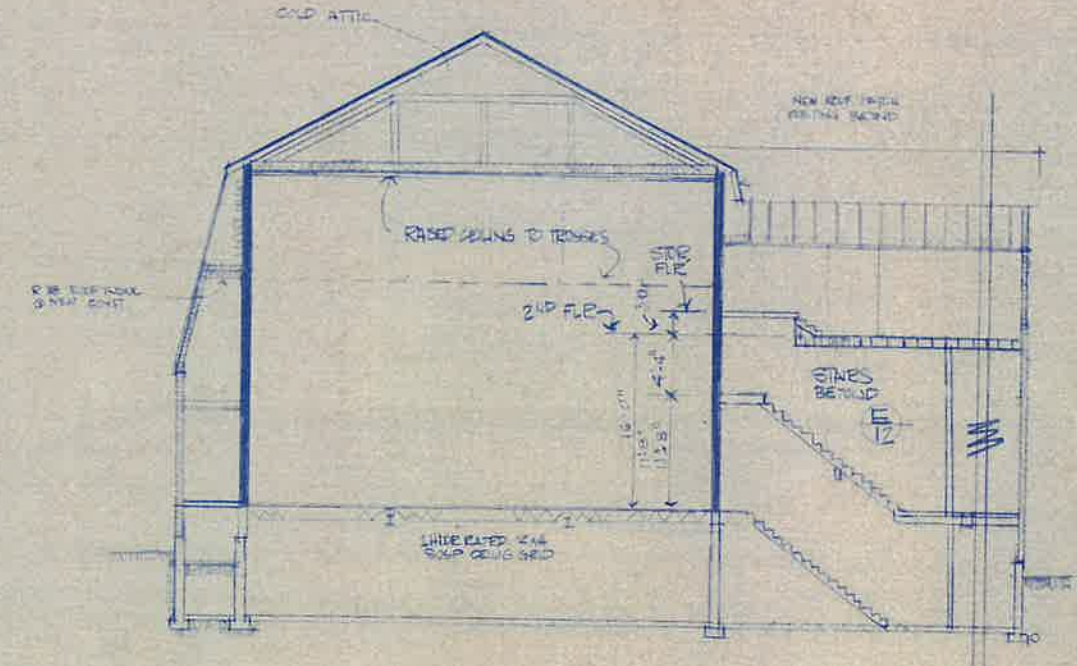
SECTION 1/8"=1'-0"



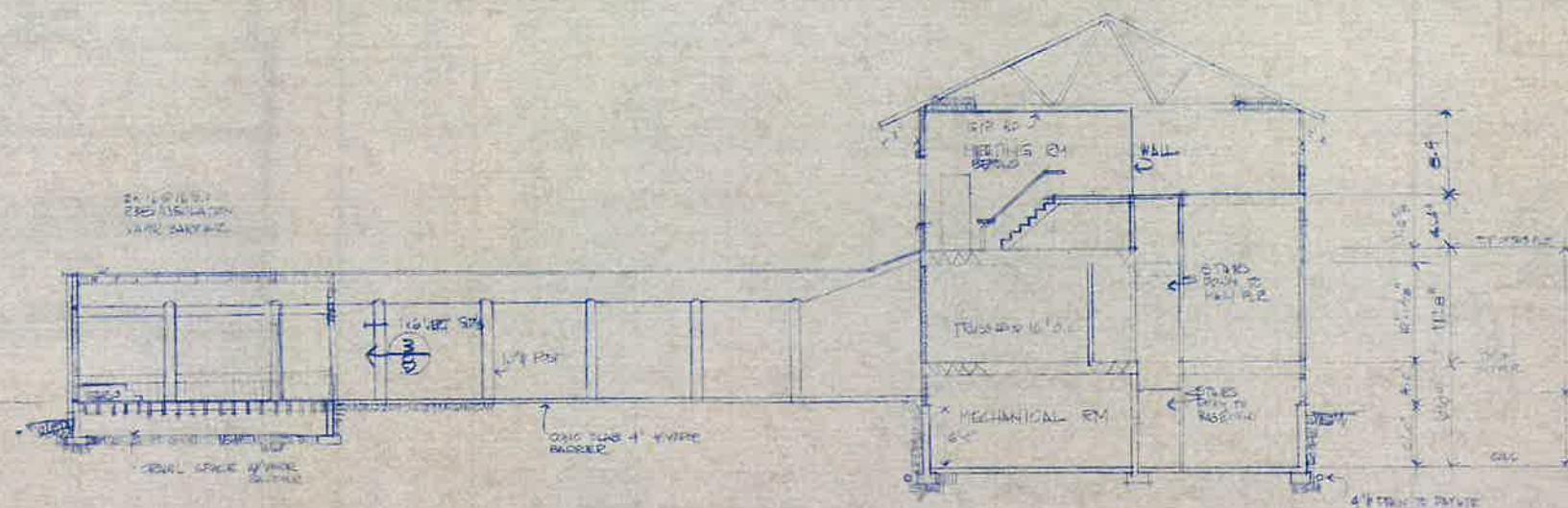
SECTION 1/8"=1'-0"



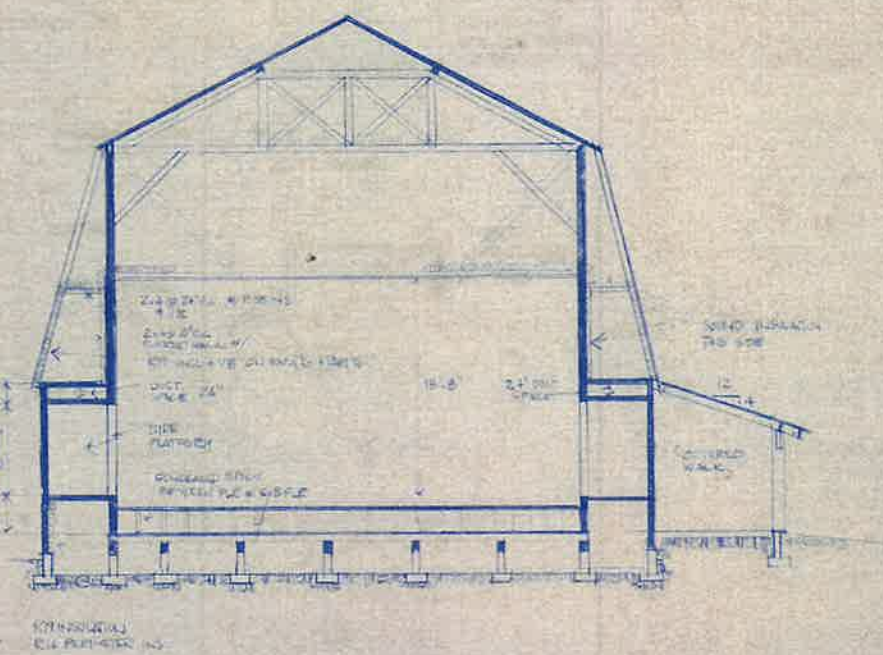
SECTION 1/8"=1'-0"



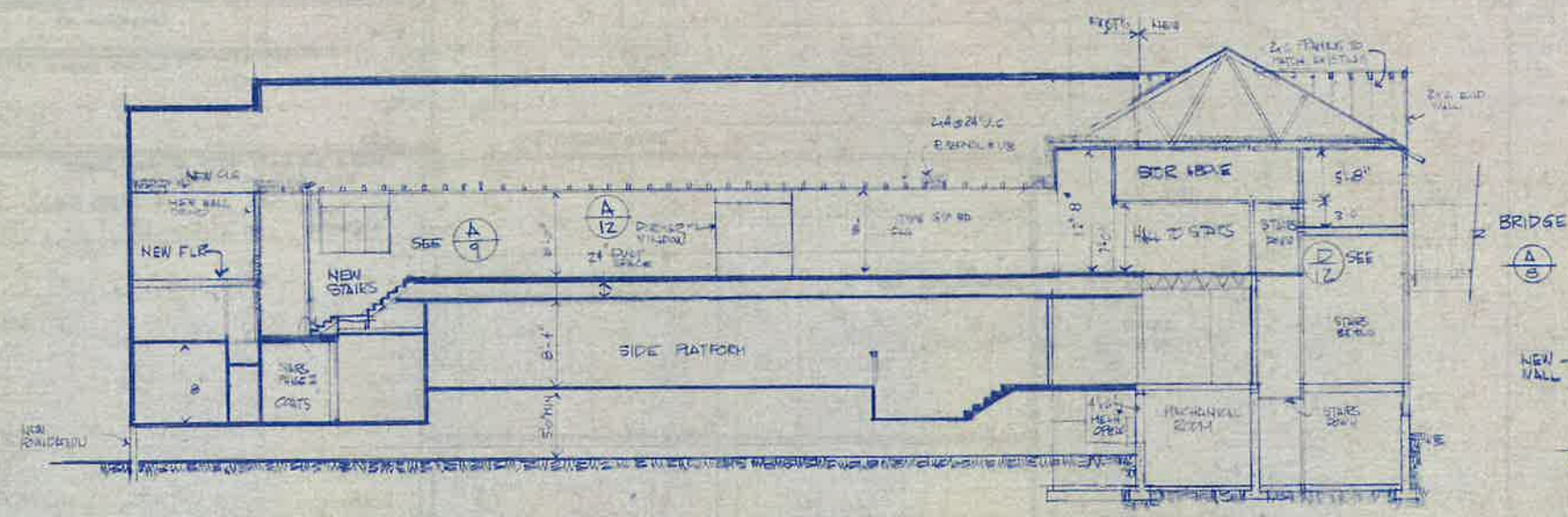
SECTION 1/8"=1'-0"



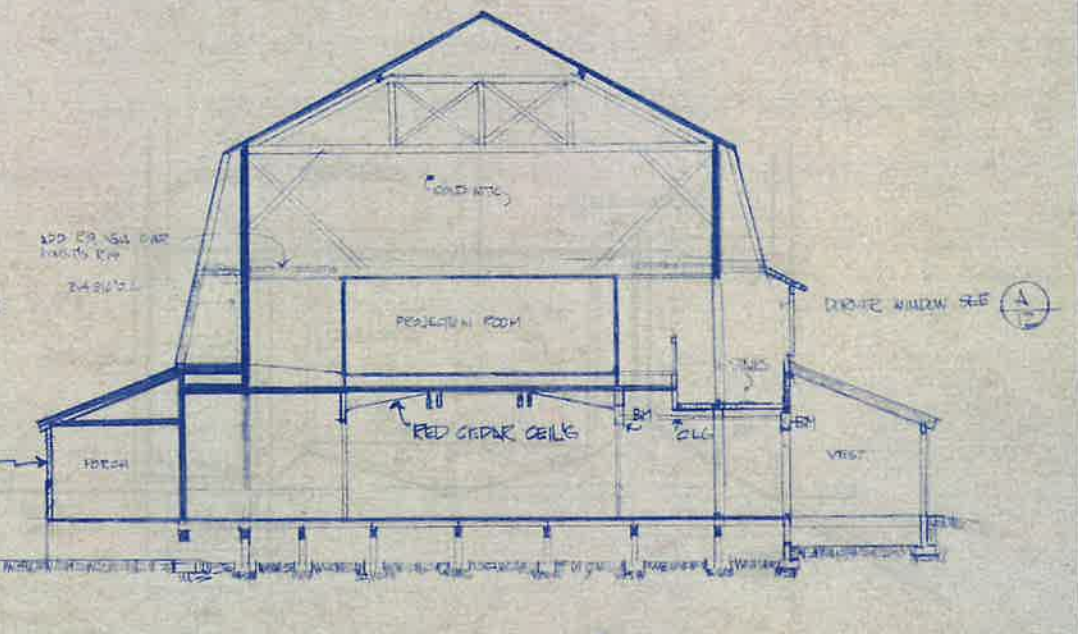
(E) SECTION 1/8"=1'-0"



(G) SECTION 1/8"=1'-0"



(F) SECTION 1/8"=1'-0"



(H) SECTION 1/8"=1'-0"



THOMAS HUNTINGTON ARCHITECT
LUTAK CONSTRUCTION COMPANY

rev.	date	by	revision

dsjn :
drwn :
chkd :
date :
scale :
horz :
vert :

emps engineering consultants
juneau alaska

CHILKAT ARTS CENTER
HAINES ALASKA

sheet 7 of
project no. 164

ON 12 REC