



PORTAGE COVE

PORTAGE COVE  
CAMPGROUND

1A

PICTURE POINT

1B

6B

PORT CHILKOOT DOCK

CRUISE SHIP DOCK

PORTAGE COVE HARBOR

6A

5A

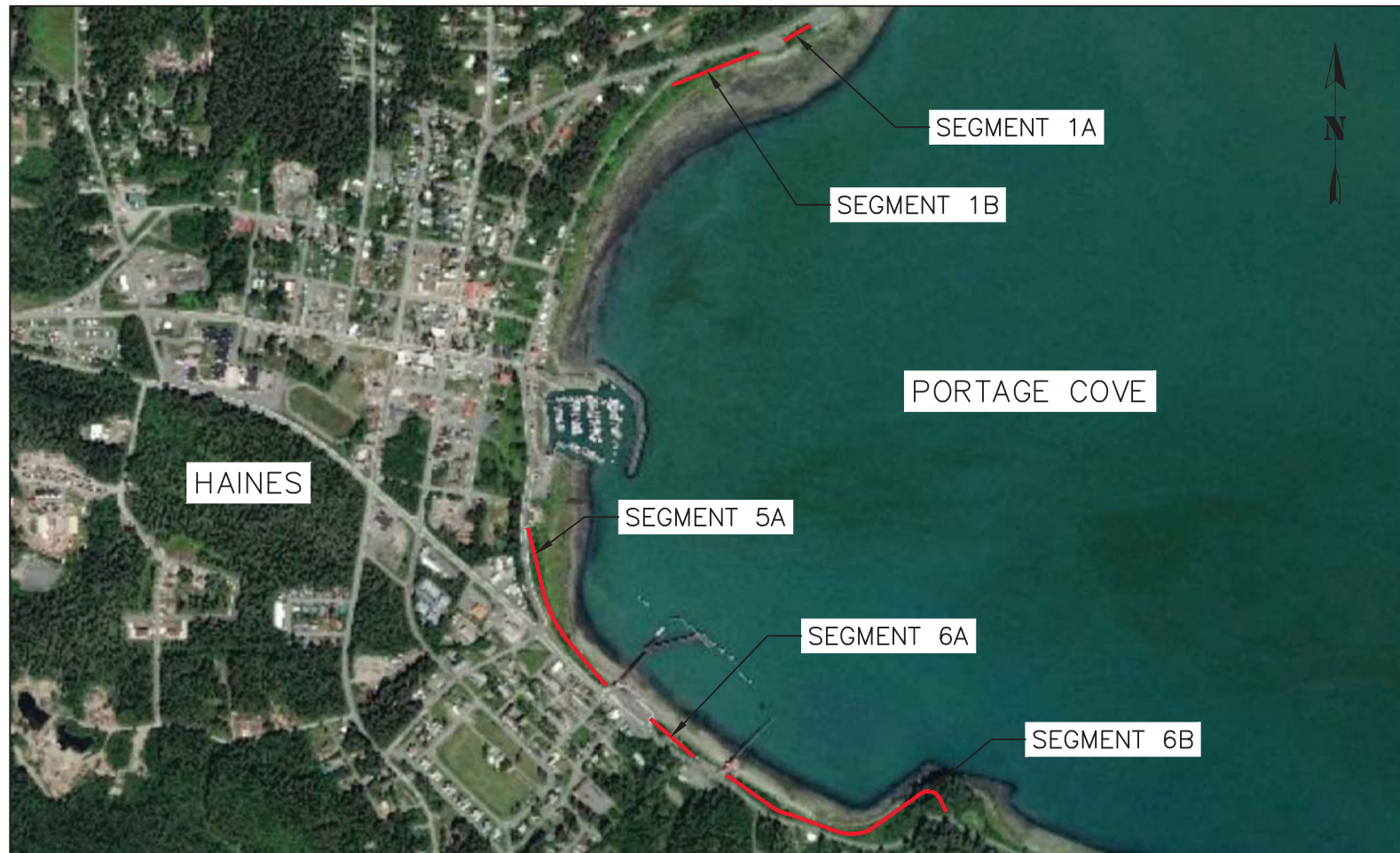


# PORTAGE COVE TRAILS

## HAINES, AK

PREPARED FOR:  
HAINES BOROUGH

SHEET INDEX	
SHEET NO.	DESCRIPTION
1	COVER SHEET
2	LEGEND, ABBREVIATIONS & GENERAL NOTES
3-4	TYPICAL SECTIONS
5	DETAILS
6	PLAN & PROFILE OVERVIEW
7	PLAN & PROFILE - SEGMENT 1A
8	PLAN & PROFILE: 1B STA: 5+00 - 10+50
9	PLAN & PROFILE: 1B STA: 10+50 - 12+67
10	PLAN & PROFILE: 5 STA: 15+00 - 17+50
11	PLAN & PROFILE: 5 STA: 25+25 - 26+82
12	PLAN & PROFILE: 6A STA: 30+00 - 3425
13	PLAN & PROFILE: 6B STA: 40+00 - 45+80
14	PLAN & PROFILE: 6B STA: 45+80 - 51+80
15	PLAN & PROFILE: 6B STA: 51+80 - 56+83
16	PLAN & PROFILE: 6B STA: 56+83 - 60+60



PROJECT LOCATION MAP  
NTS



35% DRAFT

RECORD OF REVISIONS			
No.	DATE	DESCRIPTION	BY



DRAWN BY: L. CHAMBERS  
 DESIGNED BY: L. CHAMBERS  
 CHECKED BY: G. GLADSTON  
 219 MAIN ST #13  
 HAINES, AK 99827  
 1945 ALEX HOLDEN WAY #101  
 JUNEAU, AK 99801  
 solutions@proHNS.com  
 www.proHNS.com



PORTAGE COVE TRAILS  
HAINES BOROUGH

COVER SHEET

SHEET NUMBER
1
OF
16

### LEGEND

DESCRIPTION	EXISTING	PROPOSED
BUILDING		
CULVERT		
CURB STANDARD		
CURB VALLEY		
DITCH		
EDGE OF ASPHALT		
EDGE OF CONC SIDEWALK		
EDGE OF GRAVEL		
FIRE HYDRANT		
OVERHEAD POWER		
PROPERTY LINE		
RETAINING WALL		
SANITARY SEWER CLEANOUT		
SANITARY SEWER PIPE		
SANITARY SEWER MANHOLE		
SAWCUT & MTE LIMITS		
TOP OF SLOPE		
TOE OF FILL		
UTILITY POLE		
WATER LINE PIPE		

### ABBREVIATIONS

ACP	ASBESTOS CEMENT PIPE
BTM	BOTTOM
CB	CATCH BASIN
C/L	CENTERLINE
CONC	CONCRETE
CTE	CONNECT TO EXISTING
DIA	DIAMETER
EL	ELEVATION
FG	FINISHED GRADE
FH	FIRE HYDRANT
INV	INVERT
LT	LEFT
MH	MANHOLE
MIN	MINIMUM
MTE	MATCH TO EXISTING
NTS	NOT TO SCALE
RT	RIGHT
ROW	RIGHT-OF-WAY
STA	STATION
STD	STANDARD
TYP	TYPICAL

### GENERAL NOTES

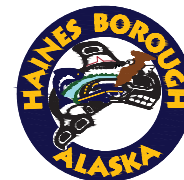
- ALL WORK FOR THESE PLANS SHALL BE CONDUCTED IN STRICT ACCORDANCE WITH ALL APPLICABLE LOCAL, STATE AND FEDERAL LAWS AND STANDARDS.
- CALL HAINES BOROUGH UTILITIES BEFORE YOU DIG FOR UNDERGROUND UTILITY LOCATES. SCOTT BRADFORD (HAINES BOROUGH WATER/SEWER PLANT SUPERVISOR): 907-766-2200, BRAD RYAN (HAINES BOROUGH DIRECTOR OF PUBLIC FACILITIES): 907-766-6414, DAN HANSON (AP&T): 907-766-6500. LOCATIONS AND ELEVATION OF EXISTING UNDERGROUND WATER, SEWER, POWER, TELEPHONE AND CABLE TELEVISION SHOWN ON THE PLANS WERE DERIVED FROM HAINES BOROUGH AS-BUILTS AND FIELD LOCATES. THE ACTUAL LOCATION OF UTILITIES MAY VARY FROM THOSE SHOWN. THE CONTRACTOR IS RESPONSIBLE FOR LOCATING, PROTECTING AND MAINTAINING THE UTILITIES THROUGHOUT THE CONSTRUCTION OF THE PROJECT. ANY DAMAGE TO THE UNDERGROUND UTILITIES DURING CONSTRUCTION SHALL BE PAID FOR BY THE CONTRACTOR AND SHALL BE CONSIDERED INCIDENTAL TO THE CONTRACT.
- A GEOTECHNICAL INVESTIGATION WAS NOT PERFORMED AS PART OF THIS DESIGN. GROUNDWATER, LARGE BOULDERS, BEDROCK, STUMPS, LOGS, ORGANICS, AND OTHER NATIVE MATERIALS MAY BE ENCOUNTERED AT VARIOUS DEPTHS DURING TRENCHING AND SITE GRADING OPERATIONS.
- FIELD SURVEY HAS NOT YET BEEN PERFORMED AS PART OF THIS PROJECT. SURFACE DATA AND EXISTING FEATURES SHOWN ARE BASED OFF LIDAR DATA AND AERIAL PHOTOS.
- PROPERTY BOUNDARY SURVEY LINES ARE A DRAFT AND NOT COMPLETE. PROPERTY BOUNDARY LINES MAY CHANGE FROM WHAT IS CURRENTLY SHOWN.

35% DRAFT

RECORD OF REVISIONS			
No.	DATE	DESCRIPTION	BY

**proHNS LLC**  
 CERTIFICATE OF AUTHORIZATION  
 #100662

DRAWN BY: L. CHAMBERS  
 DESIGNED BY: L. CHAMBERS  
 CHECKED BY: G. GLADSJO  
 219 MAIN ST #13  
 HAINES, AK 99827  
 1945 ALEX HOLDEN WAY #101  
 JUNEAU, AK 99801  
 solutions@proHNS.com  
 www.proHNS.com

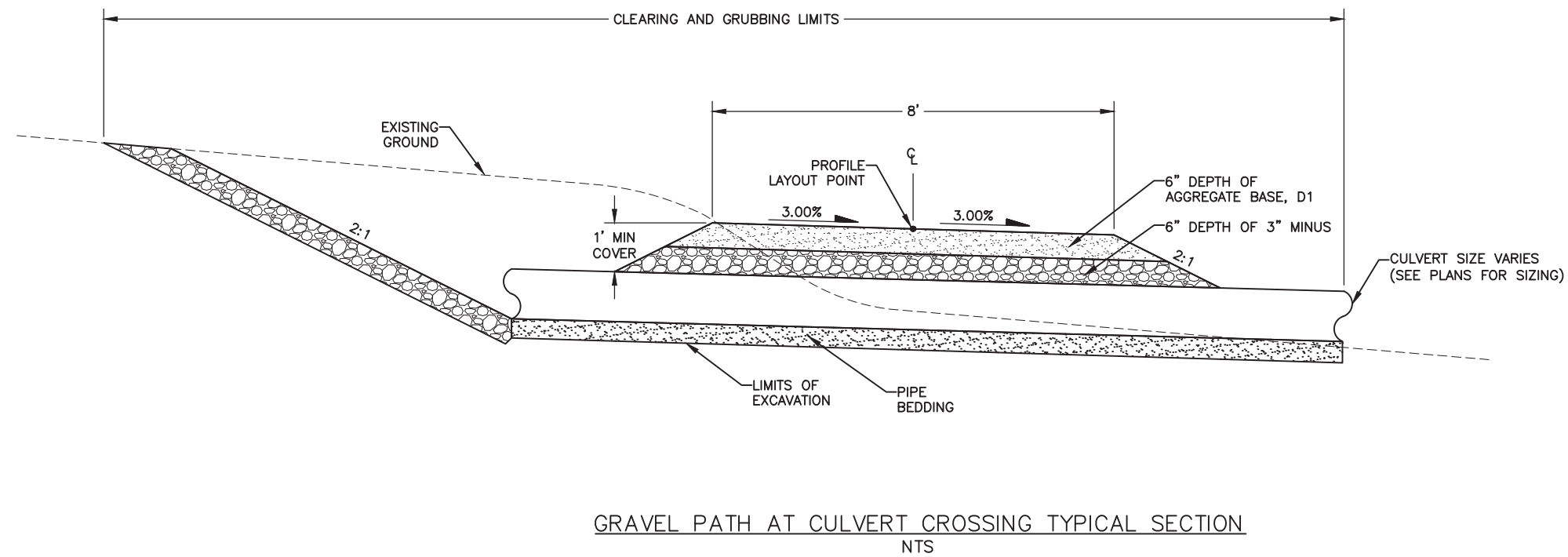
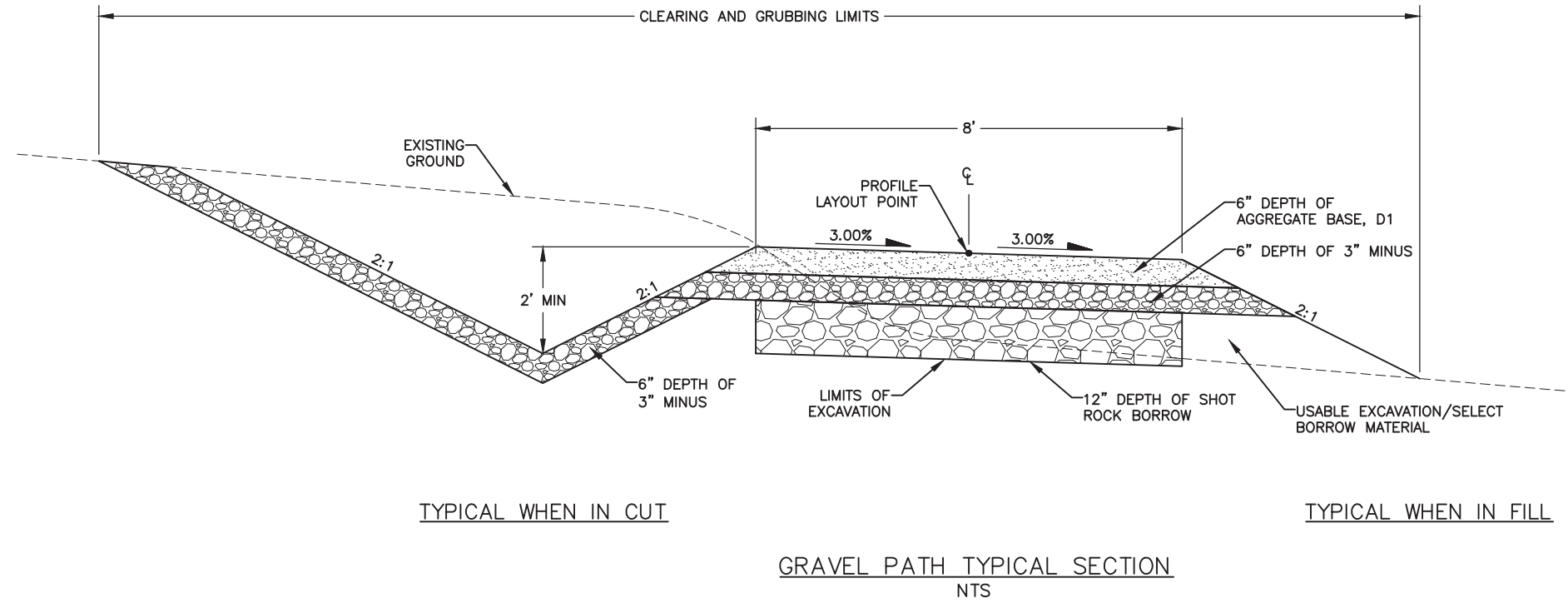


PORTAGE COVE TRAILS

HAINES BOROUGH

LEGEND,  
 ABBREVIATIONS &  
 NOTES

SHEET NUMBER
2
OF
16



35% DRAFT

RECORD OF REVISIONS			
No.	DATE	DESCRIPTION	BY



DRAWN BY: L. CHAMBERS  
DESIGNED BY: L. CHAMBERS  
CHECKED BY: G. GLADSO  
219 MAIN ST #13  
HAINES, AK 99827  
1945 ALEX HOLDEN WAY #101  
JUNEAU, AK 99801  
solutions@proHNS.com  
www.proHNS.com



PORTAGE COVE TRAILS

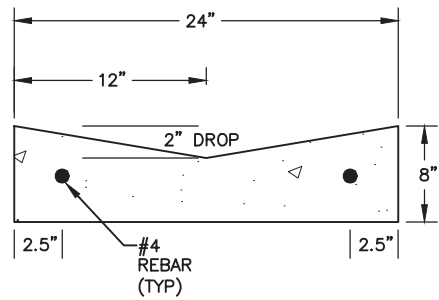
HAINES BOROUGH

PATH TYPICAL SECTIONS

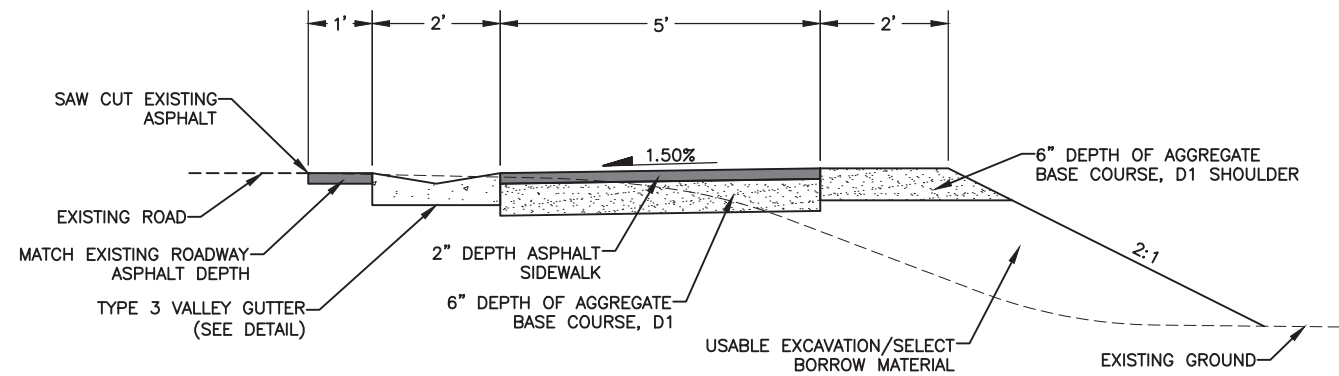
SHEET NUMBER	
3	OF
16	

## SIDEWALK TYPICAL SECTION NOTES

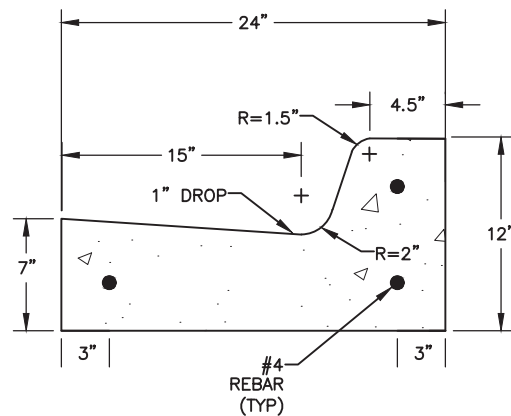
1. DRIVEWAYS DISTURBED DURING CONSTRUCTION SHALL BE RECONSTRUCTED TO EQUAL OR BETTER CONDITION WITH SUBGRADE REPLACED IN LAYERS TO MATCH THOSE REMOVED, EXCEPT:
  - 1.A. EXISTING ASPHALT PAVED DRIVEWAYS DISTURBED DURING CONSTRUCTION SHALL BE SUBCUT TO 8.5" BELOW FINISHED GRADE AND REPLACED WITH 6" OF 2-INCH MINUS SHOT ROCK CAPPED WITH BASE COURSE GRADING, D-1.
  - 1.B. EXISTING GRAVEL DRIVEWAYS DISTURBED DURING CONSTRUCTION SHALL BE SUBCUT TO 4" BELOW FINISHED GRADE AND REPLACED WITH 4" OF BASE COURSE GRADING, D-1.
  - 1.C. ORGANICS, ROOTS, WOOD OR OTHER DELETERIOUS MATERIALS ENCOUNTERED IN THE DRIVEWAYS DURING EXCAVATION OPERATIONS SHALL BE REMOVED AS DIRECTED BY THE ENGINEER AND DISPOSED OF AT AN APPROVED OFFSITE DISPOSAL SITE. BACKFILL VOIDS BELOW THE REQUIRED SUBCUT LAYER WITH USABLE EXCAVATION.
2. THE LIMITS OF USABLE MATERIAL, BASE COURSE GRADING D-1 AND TOPSOIL BEHIND THE PROPOSED SIDEWALK VARY IN DISTANCE. PLACE AND GRADE THESE MATERIALS TO PROVIDE A SMOOTH, WELL-DRAINED TRANSITION TO EXISTING GRADES, AS DIRECTED BY THE ENGINEER.
3. PLACE AND GRADE TOPSOIL AND BASE COURSE GRADING, D-1 USED TO MATCH TO EXISTING GROUND TO PROVIDE A SMOOTH, WELL DRAINED TRANSITION TO EXISTING GRADES, AS DIRECTED BY THE ENGINEER.



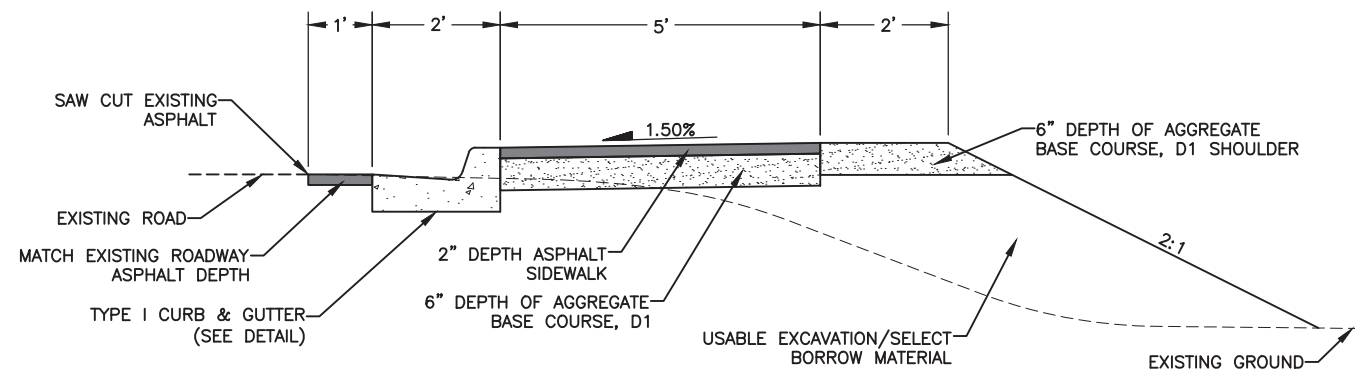
1 TYPE III VALLEY GUTTER DETAIL  
4 SCALE: NOT TO SCALE



BEACH ROAD SIDEWALK W/ TYPE III VALLEY GUTTER TYPICAL SECTION  
NTS



2 TYPE I CURB AND GUTTER DETAIL  
4 SCALE: NOT TO SCALE



BEACH ROAD SIDEWALK W/ TYPE I CURB/GUTTER TYPICAL SECTION  
NTS

## TRAFFIC CONTROL NOTES

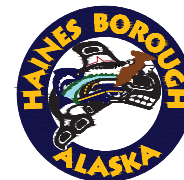
1. ALL TRAFFIC TO BE CONTROLLED PER REQUIREMENTS OF THE ALASKA TRAFFIC MANUAL, U.S. DEPARTMENT OF TRANSPORTATION "MANUAL ON UNIFORM TRAFFIC CONTROL DEVICES" AND THE ALASKA SUPPLEMENT.
2. DETOURS SHALL BE APPROVED BY THE ENGINEER.
3. ROAD CLOSURES SHALL BE APPROVED BY THE ENGINEER.
4. THE CONTRACTOR WILL NOT BE PERMITTED TO OBSTRUCT VEHICULAR TRAFFIC BETWEEN THE HOURS OF 4:30 PM AND 8:00 AM SEVEN DAYS A WEEK. DURING THIS PERIOD ONE LANE SHALL BE OPEN TO VEHICULAR TRAFFIC AND HAVE A MINIMUM WIDTH OF 9 FEET.
5. PROVIDE ACCESS FOR EMERGENCY VEHICLES AT ALL TIMES.
6. A MINIMUM OF ONE LANE (9 FOOT MINIMUM WIDTH) SHALL BE KEPT OPEN TO VEHICULAR TRAFFIC AT ALL TIMES, EXCEPT A FIVE MINUTE MAXIMUM STOPPAGE TO VEHICULAR TRAFFIC WILL BE PERMITTED WITH NO MORE THAN ONE TRAFFIC STOPPAGE PER HOUR. THIS REQUIREMENT DOES NOT APPLY FOR THE DAY OF PAVING.
7. PEDESTRIAN TRAFFIC SHALL BE AVAILABLE ALONG AT LEAST ONE SIDE OF THE STREET AT ALL TIMES. THE PEDESTRIAN PATHWAY SHALL BE CLEARLY MARKED AND SHALL SATISFY THE REQUIREMENTS AS DESCRIBED IN THE SPECIAL PROVISIONS.

35% DRAFT

RECORD OF REVISIONS			
No.	DATE	DESCRIPTION	BY



DRAWN BY: L. CHAMBERS  
 DESIGNED BY: L. CHAMBERS  
 CHECKED BY: G. GLADSKO  
 219 MAIN ST #13  
 HAINES, AK 99827  
 1945 ALEX HOLDEN WAY #101  
 JUNEAU, AK 99801  
 solutions@proHNS.com  
 www.proHNS.com



PORTAGE COVE TRAILS  
 HAINES BOROUGH

SIDEWALK TYPICAL  
 SECTIONS

SHEET NUMBER
4
OF
16



1 SWITCH BACK DETAIL  
5 SCALE: NOT TO SCALE

2 CULVERT W/ HEADWALLS DETAIL  
5 SCALE: NOT TO SCALE

3 CONCRETE BLOCK GRAVITY RETAINING WALL W/ HANDRAIL DETAIL  
5 SCALE: NOT TO SCALE

4 TYPICAL ROCK RETAINER DETAIL  
5 SCALE: NOT TO SCALE


5 ADA CONCRETE LANDING DETAIL  
5 SCALE: NOT TO SCALE

6 SIDEWALK DRIVEWAY CUT DETAIL  
5 SCALE: NOT TO SCALE

7 EXISTING CULVERT EXTENSION DETAIL  
5 SCALE: NOT TO SCALE

35% DRAFT

RECORD OF REVISIONS			
No.	DATE	DESCRIPTION	BY



**proHNS** LLC  
CERTIFICATE OF AUTHORIZATION #100662

DRAWN BY:	C. BYDLON
DESIGNED BY:	L. CHAMBERS
CHECKED BY:	L. CHAMBERS

219 MAIN ST #13  
HAINES, AK 99827

1945 ALEX HOLDEN WAY #101  
JUNEAU, AK 99801

solutions@proHNS.com  
www.proHNS.com



PORTAGE COVE TRAILS

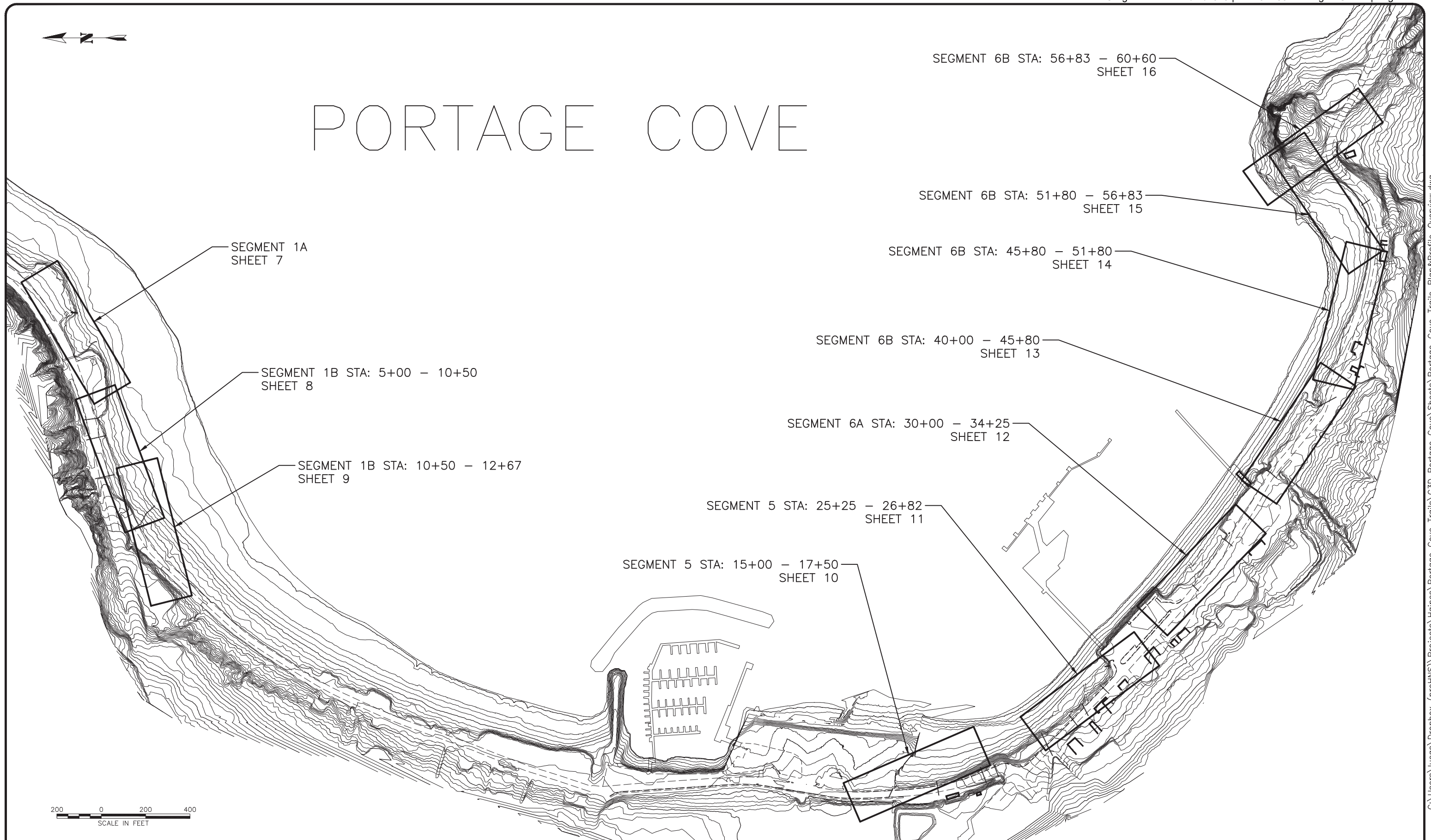
HAINES BOROUGH

DETAILS

SHEET NUMBER
5
OF
16



# PORTAGE COVE

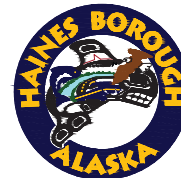


35% DRAFT

RECORD OF REVISIONS			
No.	DATE	DESCRIPTION	BY

**proHNS** LLC  
CERTIFICATE OF AUTHORIZATION  
#100662

DRAWN BY: C. BYDLON  
DESIGNED BY: L. CHAMBERS  
CHECKED BY: L. CHAMBERS  
219 MAIN ST #13  
HAINES, AK 99827  
1945 ALEX HOLDEN WAY #101  
JUNEAU, AK 99801  
solutions@proHNS.com  
www.proHNS.com

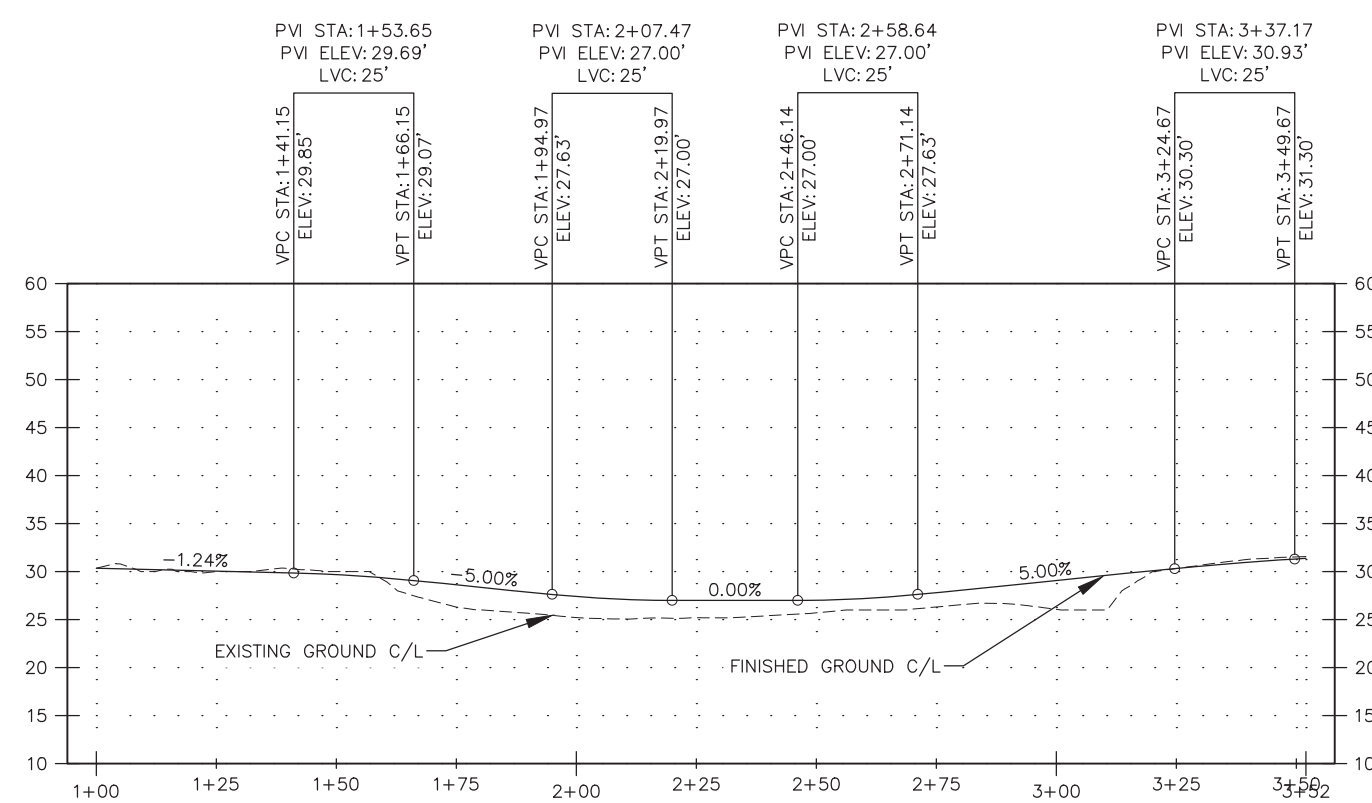
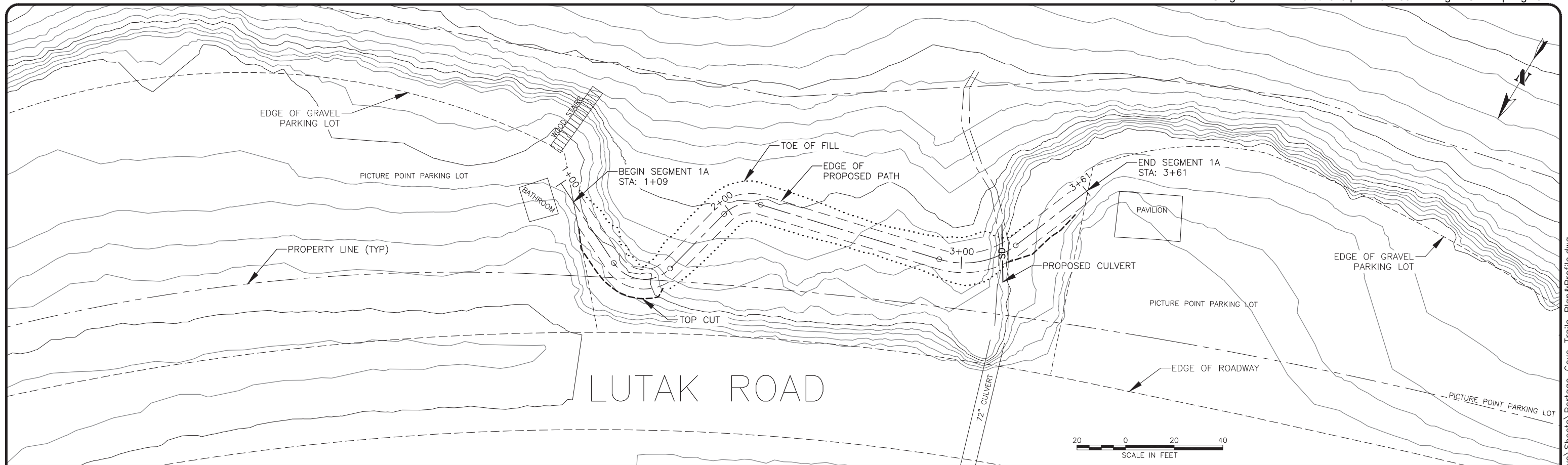


PORTAGE COVE TRAILS

HAINES BOROUGH

PLAN & PROFILE SHEETS  
OVERVIEW

SHEET NUMBER	
6	OF
16	



**35% DRAFT**

RECORD OF REVISIONS			
No.	DATE	DESCRIPTION	BY

**proHNS LLC**  
 CERTIFICATE OF AUTHORIZATION #100662  
 219 MAIN ST #13 HAINES, AK 99827  
 1945 ALEX HOLDEN WAY #101 JUNEAU, AK 99801  
 solutions@proHNS.com www.proHNS.com

**HAINES BOROUGH ALASKA**

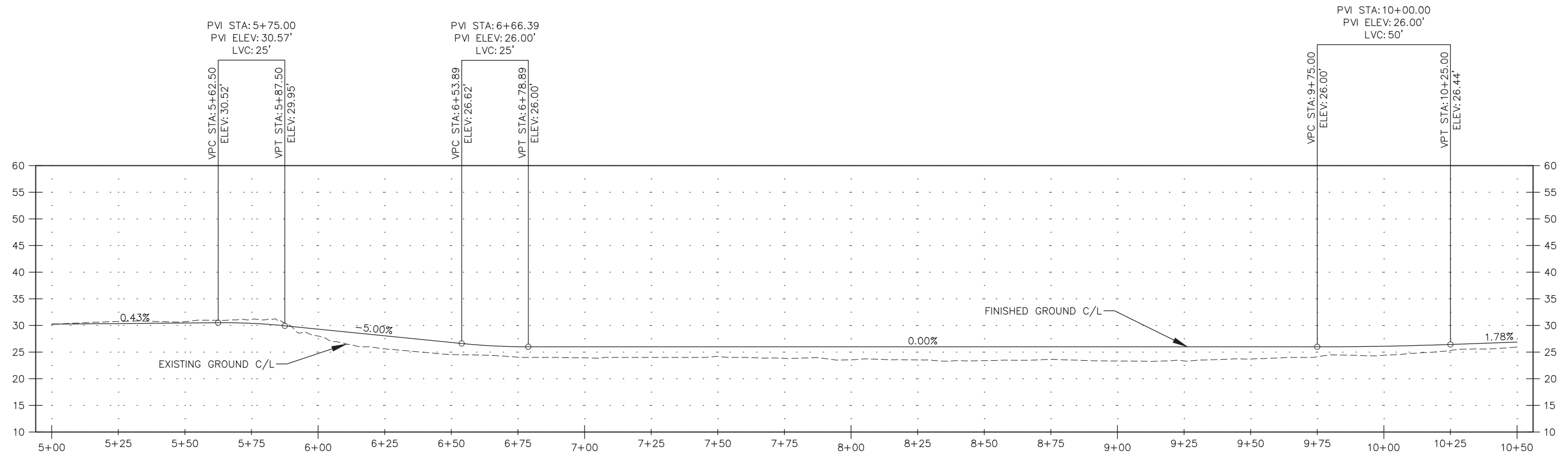
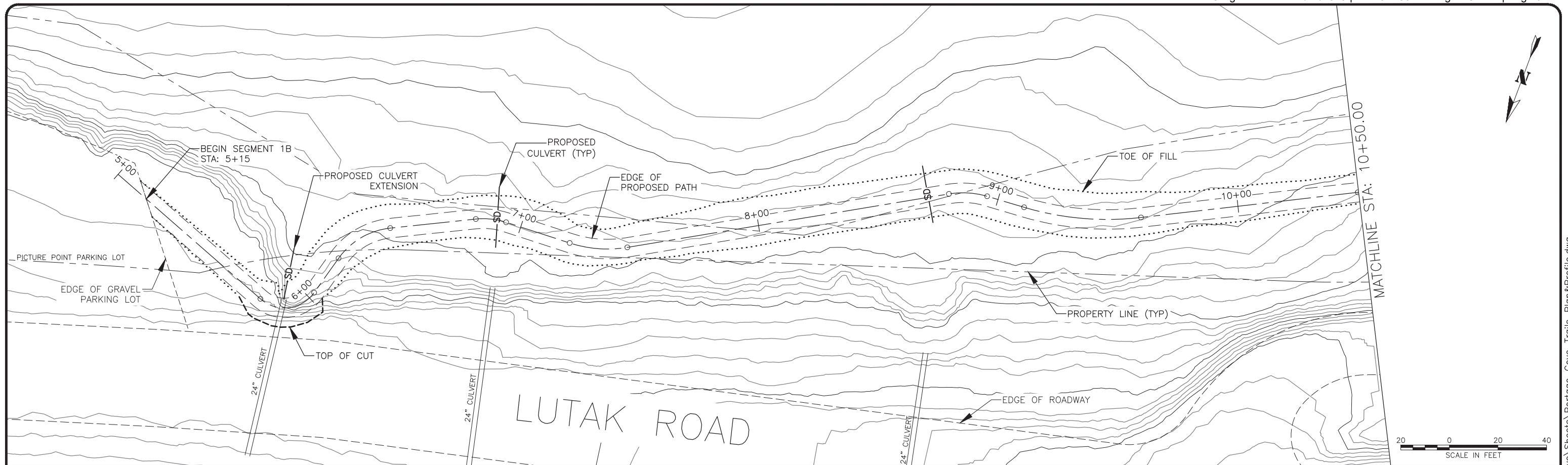
**PORTAGE COVE TRAILS**  
 HAINES BOROUGH

**SEGMENT 1A**

SHEET NUMBER
<b>7</b>
OF
<b>16</b>

C:\Users\lucas\Dropbox (proHNS)\Projects\Haines\Portage Cove Trails\C3D Portage Cove Sheets\Cove\_Trails\_Plan&Profile.dwg April 2, 2019



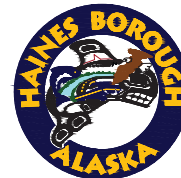


35% DRAFT

RECORD OF REVISIONS			
No.	DATE	DESCRIPTION	BY



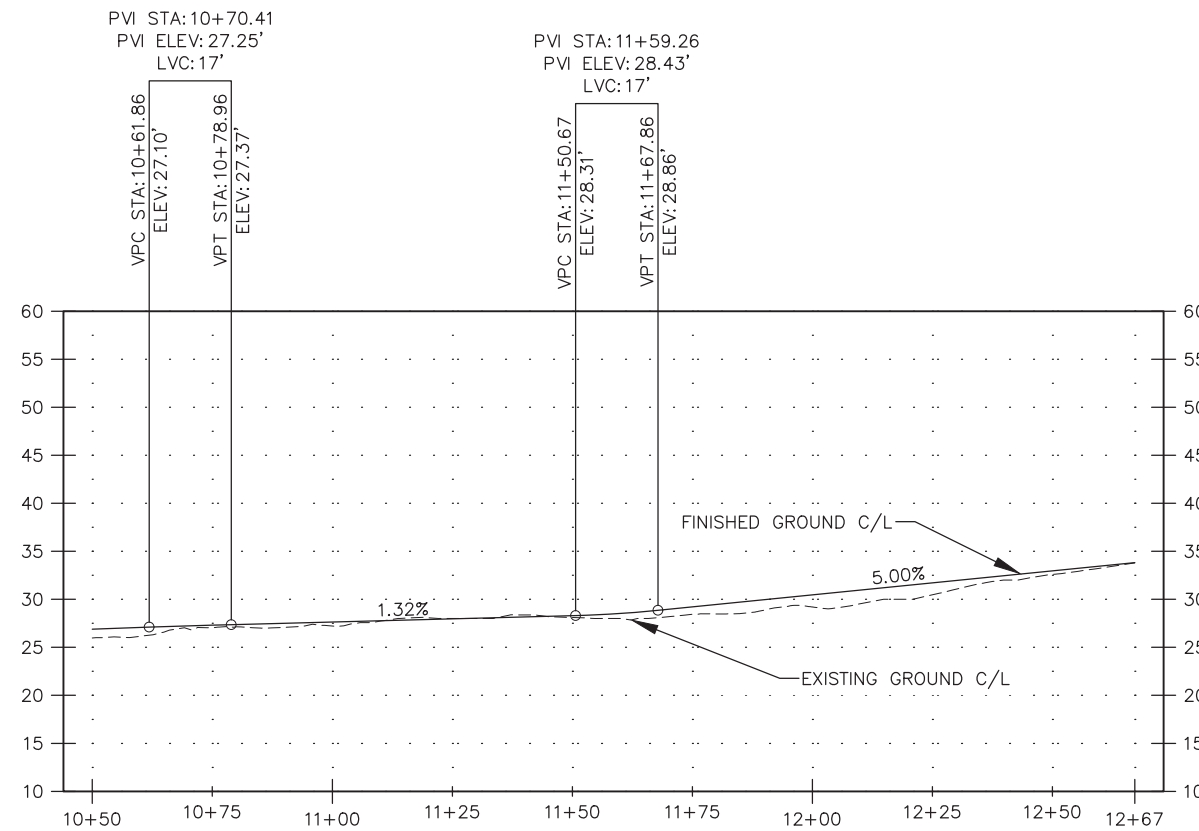
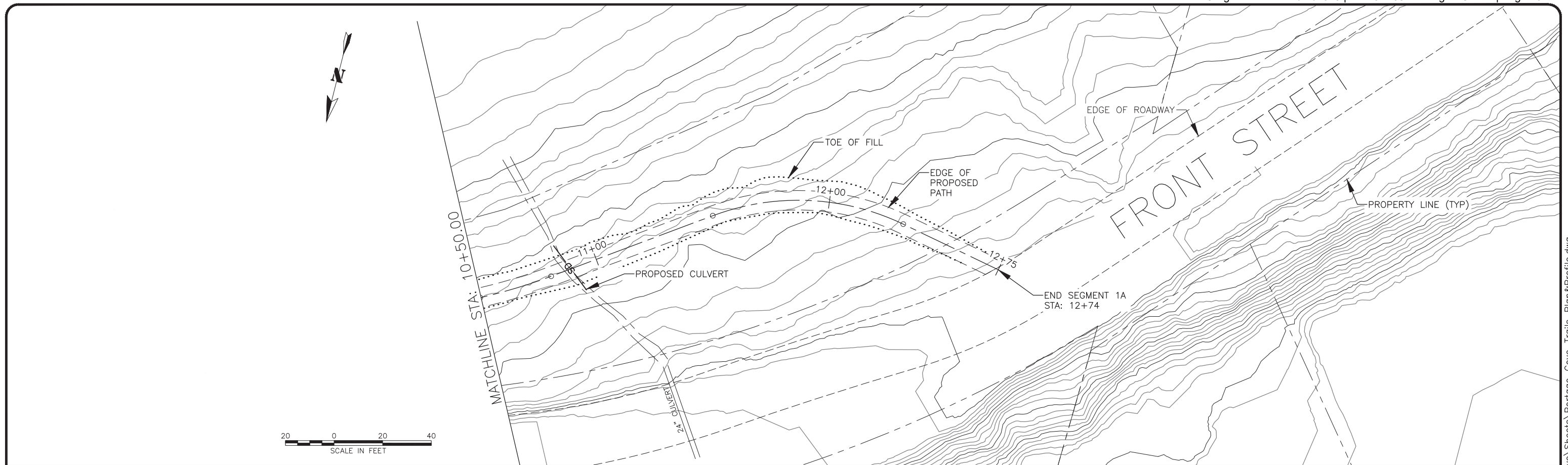
DRAWN BY: C. BYDLON  
 DESIGNED BY: L. CHAMBERS  
 CHECKED BY: L. CHAMBERS  
 219 MAIN ST #13  
 HAINES, AK 99827  
 1945 ALEX HOLDEN WAY #101  
 JUNEAU, AK 99801  
 solutions@proHNS.com  
 www.proHNS.com



PORTAGE COVE TRAILS  
 HAINES BOROUGH

SEGMENT 1B STA 5+00 -  
 10+50

SHEET NUMBER	
8	OF
16	

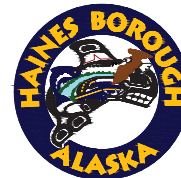


35% DRAFT

RECORD OF REVISIONS			
No.	DATE	DESCRIPTION	BY



DRAWN BY: C. BYDLON  
 DESIGNED BY: L. CHAMBERS  
 CHECKED BY: L. CHAMBERS  
 219 MAIN ST #13  
 HAINES, AK 99827  
 1945 ALEX HOLDEN WAY #101  
 JUNEAU, AK 99801  
 solutions@proHNS.com  
 www.proHNS.com



PORTAGE COVE TRAILS  
 HAINES BOROUGH

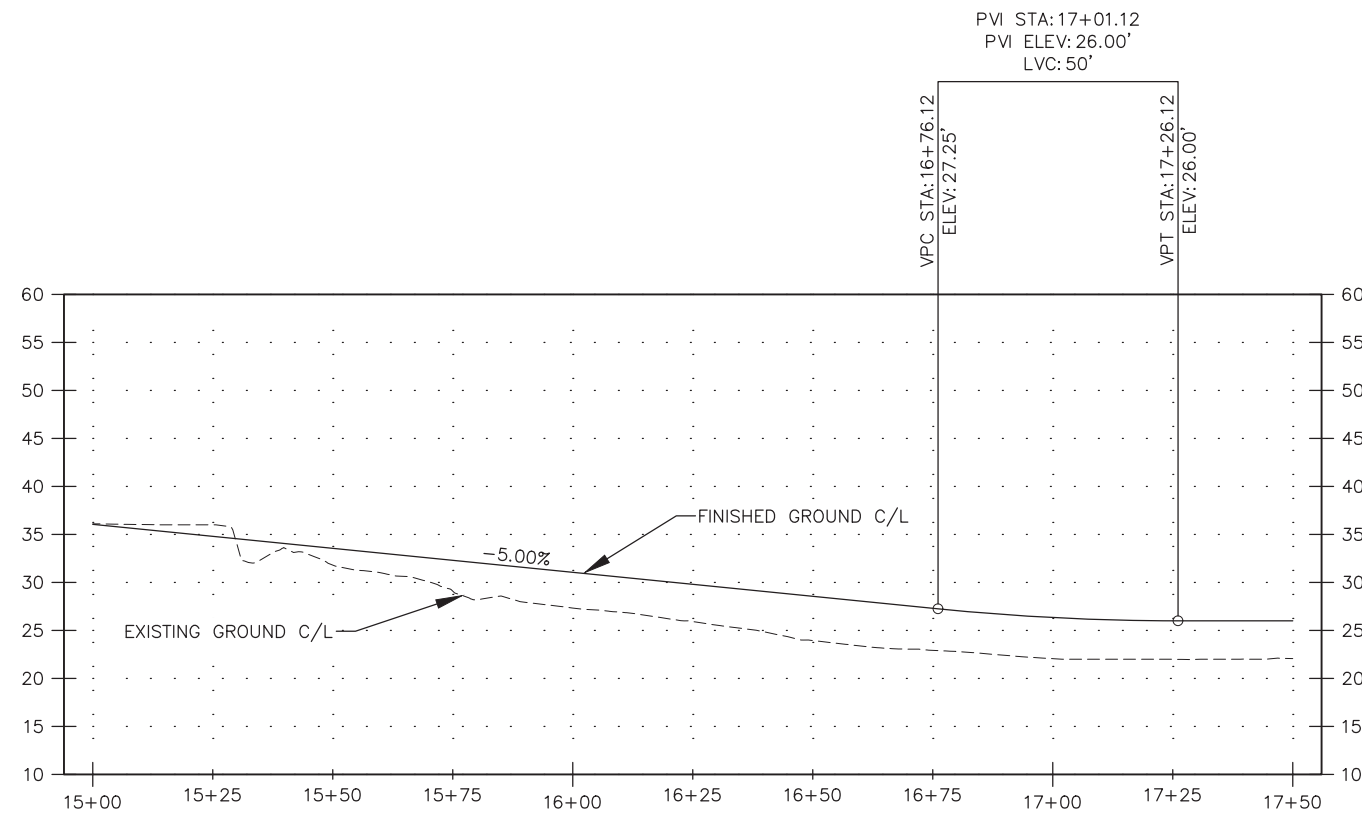
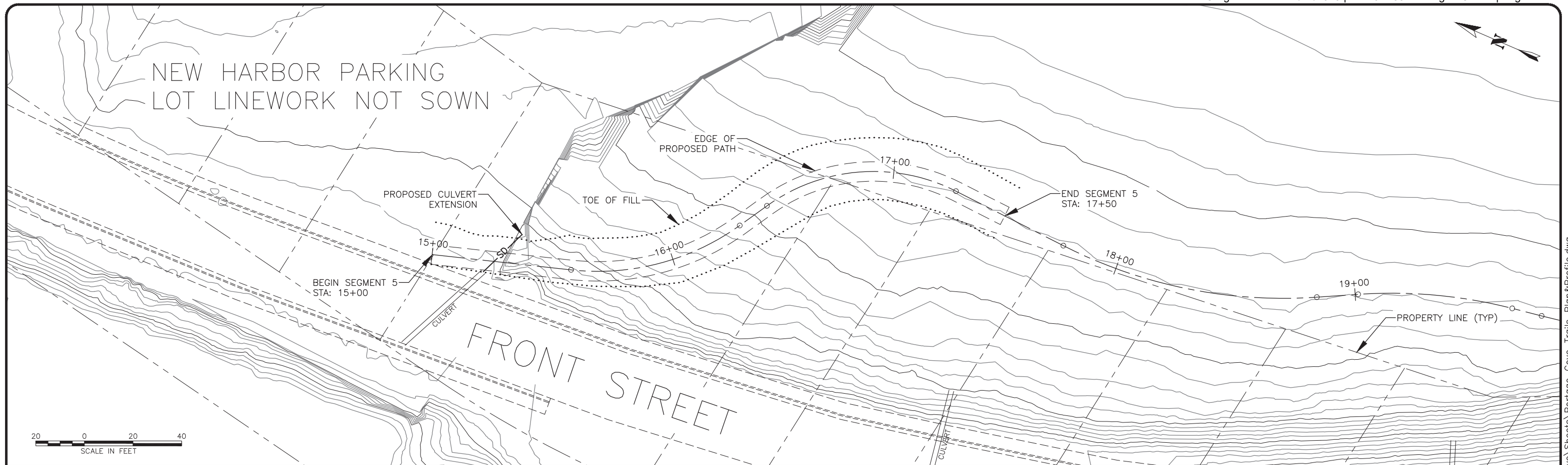
SEGMENT 1B STA 10+50  
 TO 12+67

SHEET NUMBER	
9	OF
16	

C:\Users\lucas\Dropbox (proHNS)\Projects\Haines\Portage Cove Trails\C3D Portage Cove\Sheets\Cove\_Trails\_Plan&Profile.dwg

April 2, 2019

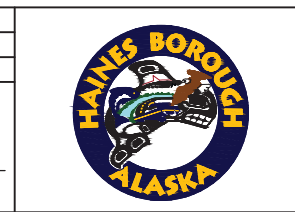




**35% DRAFT**

RECORD OF REVISIONS			
No.	DATE	DESCRIPTION	BY

DRAWN BY: C. BYDLON  
 DESIGNED BY: L. CHAMBERS  
 CHECKED BY: L. CHAMBERS  
 219 MAIN ST #13  
 HAINES, AK 99827  
 1945 ALEX HOLDEN WAY #101  
 JUNEAU, AK 99801  
 solutions@proHNS.com  
 www.proHNS.com

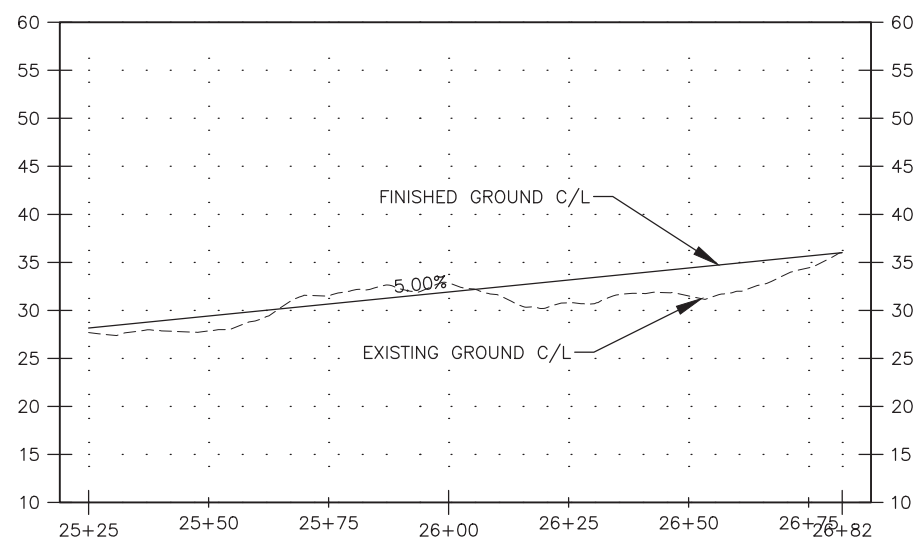
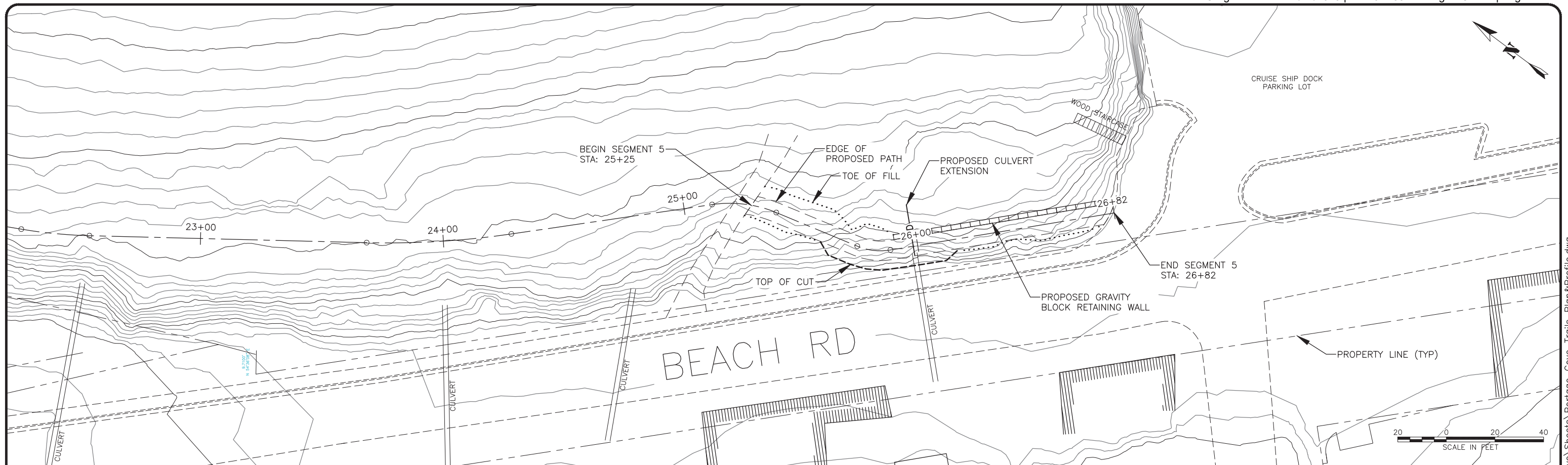


PORTAGE COVE TRAILS  
 HAINES BOROUGH

SEGMENT 5 STA 15+00  
 TO 17+50


SHEET NUMBER	
10	OF
16	

C:\Users\lucas\Dropbox (proHNS)\Projects\Haines\Portage Cove Trails\C3D Portage Cove\Sheets\Portage\_Cove\_Trails\_Plan&Profile.dwg April 2, 2019



**35% DRAFT**

RECORD OF REVISIONS			
No.	DATE	DESCRIPTION	BY



**proHNS LLC**  
 CERTIFICATE OF AUTHORIZATION #100662

DRAWN BY: C. BYDLON  
 DESIGNED BY: L. CHAMBERS  
 CHECKED BY: L. CHAMBERS

219 MAIN ST #13  
 HAINES, AK 99827

1945 ALEX HOLDEN WAY #101  
 JUNEAU, AK 99801

solutions@proHNS.com  
 www.proHNS.com



**PORTAGE COVE TRAILS**

HAINES BOROUGH

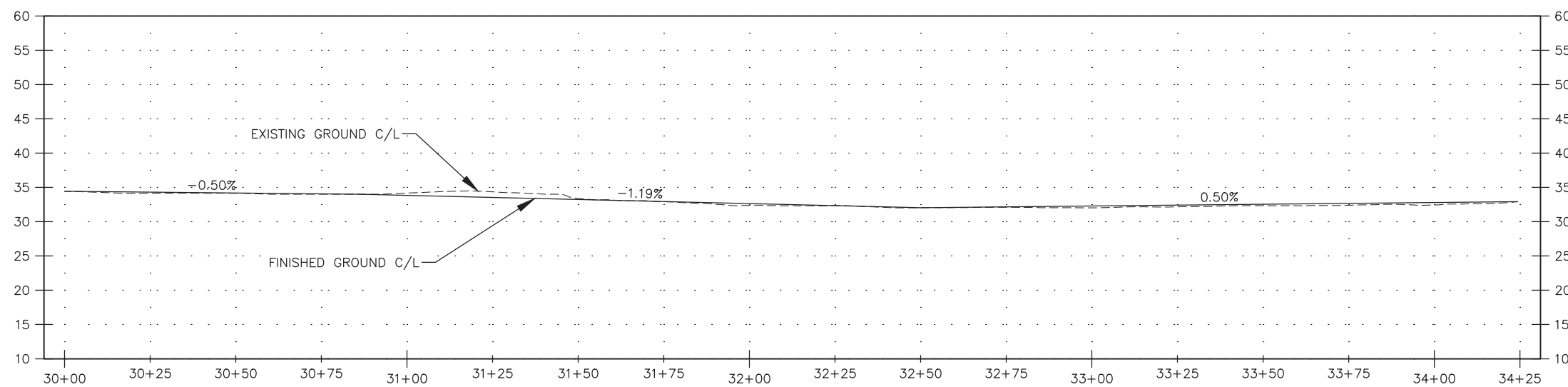
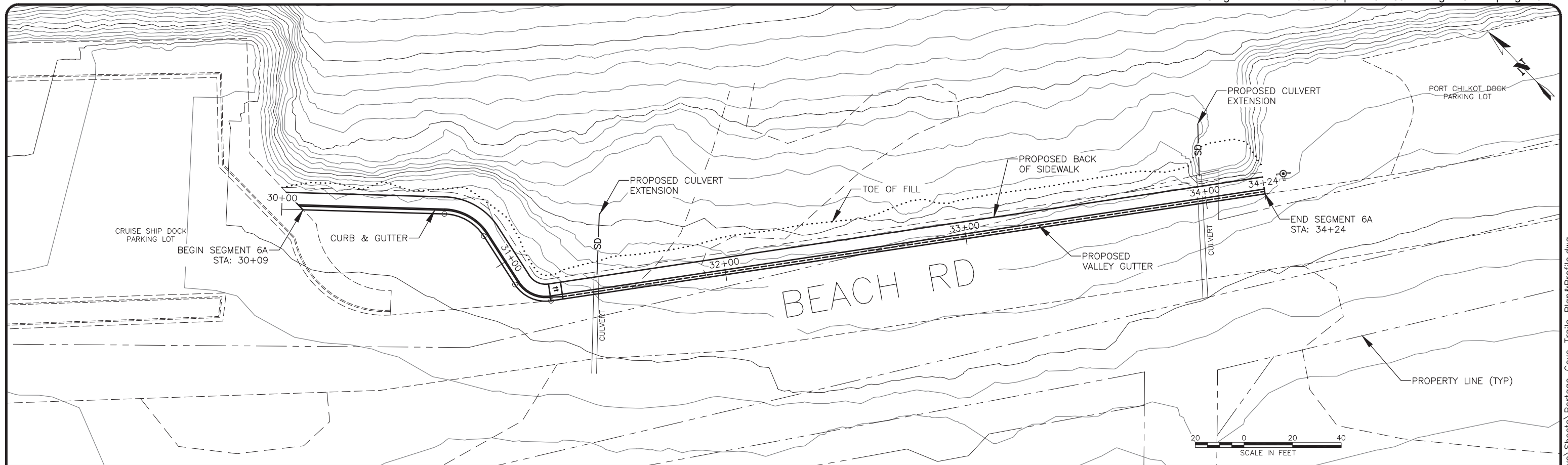
**SEGMENT 5 STA 25+25  
 TO 26+82**

SHEET NUMBER	
11	OF
16	

C:\Users\lucas\Dropbox (proHNS)\Projects\Haines\Portage Cove Trails\C3D Portage Cove\Sheets\Portage\_Cove\_Trails\_Plan&Profile.dwg

April 2, 2019

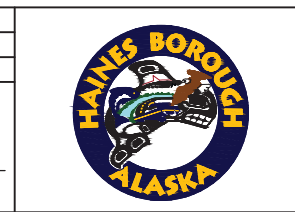




**35% DRAFT**

RECORD OF REVISIONS			
No.	DATE	DESCRIPTION	BY

**proHNS LLC**  
 CERTIFICATE OF AUTHORIZATION #100662  
 219 MAIN ST #13 HAINES, AK 99827  
 1945 ALEX HOLDEN WAY #101 JUNEAU, AK 99801  
 solutions@proHNS.com www.proHNS.com



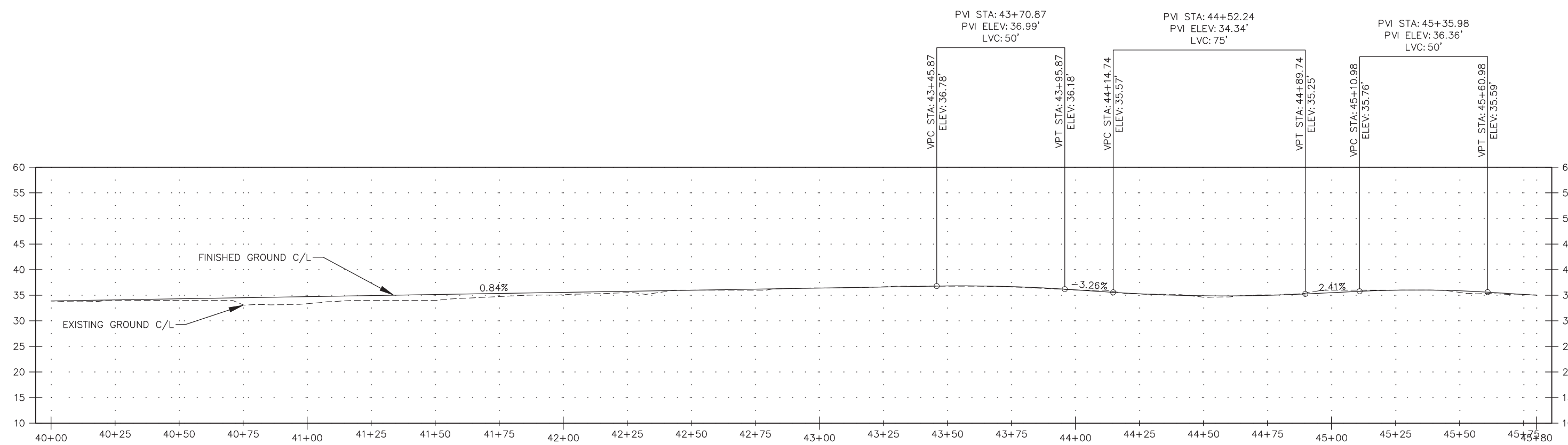
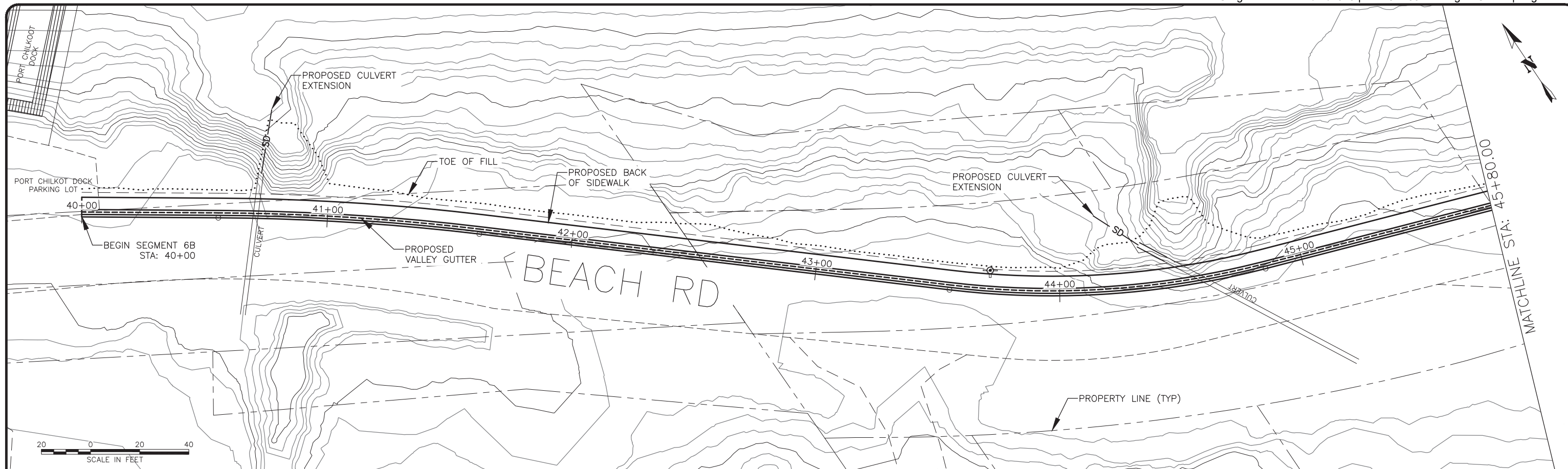
**PORTAGE COVE TRAILS**  
 HAINES BOROUGH

**SEGMENT 6A STA 30+00 TO 34+25**

SHEET NUMBER	
12	OF
16	

C:\Users\lucas\Dropbox (proHNS)\Projects\Haines\Portage Cove Trails\C3D Portage Cove Trails\_Cove\_Trails\_Plan&Profile.dwg

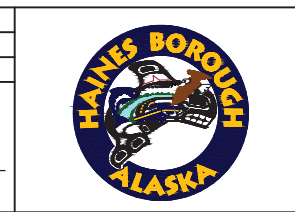
April 2, 2019



**35% DRAFT**

RECORD OF REVISIONS			
No.	DATE	DESCRIPTION	BY

DRAWN BY: C. BYDLON  
 DESIGNED BY: L. CHAMBERS  
 CHECKED BY: L. CHAMBERS  
 219 MAIN ST #13  
 HAINES, AK 99827  
 1945 ALEX HOLDEN WAY #101  
 JUNEAU, AK 99801  
 solutions@proHNS.com  
 www.proHNS.com



PORTAGE COVE TRAILS  
 HAINES BOROUGH

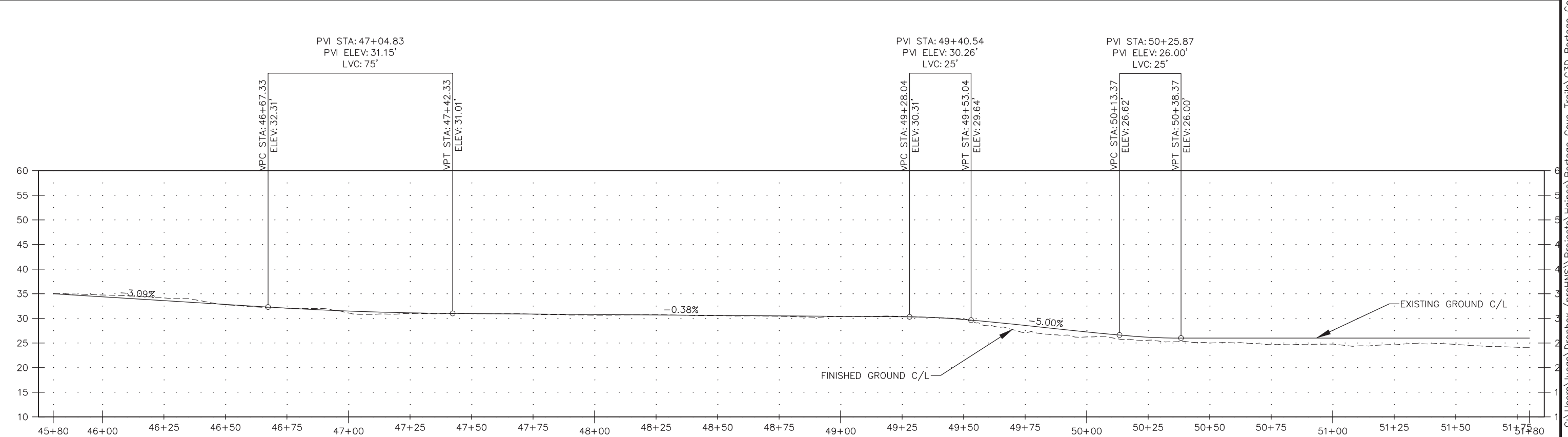
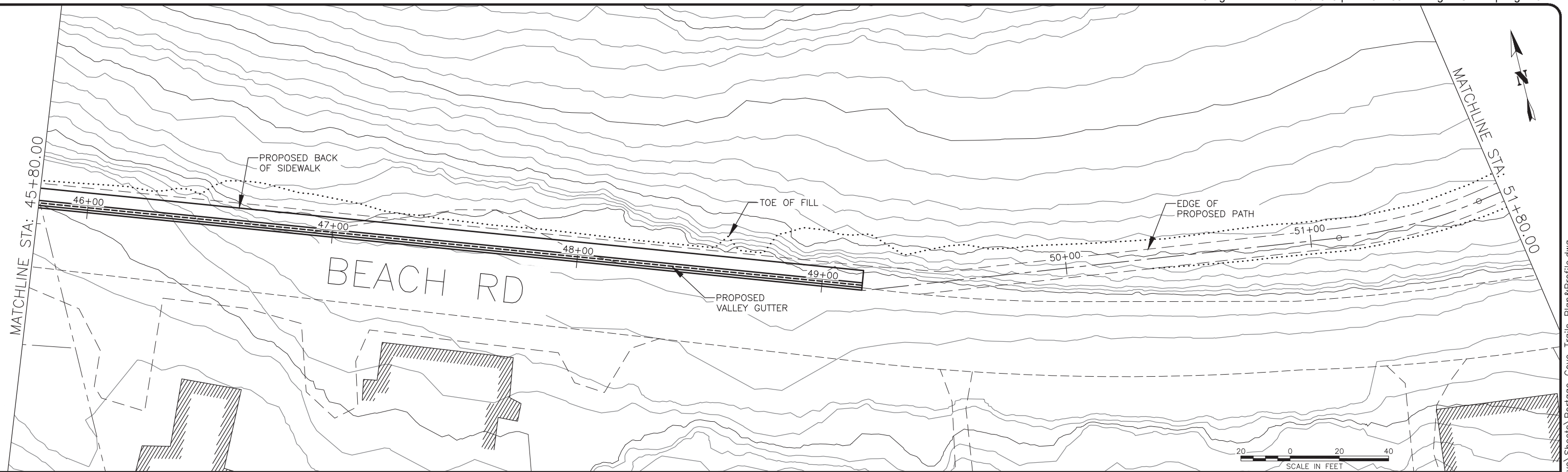
SEGMENT 6B STA 40+00  
 TO 45+80

SHEET NUMBER	
13	OF
16	

C:\Users\lucas\Dropbox (proHNS)\Projects\Haines\Projects\Portage Cove Trails\C3D Portage Cove\Sheets\Portage\_Cove\_Trails\_Plan&Profile.dwg

April 2, 2019





**35% DRAFT**

RECORD OF REVISIONS			
No.	DATE	DESCRIPTION	BY

**proHNS LLC**  
 CERTIFICATE OF AUTHORIZATION #100662  
 219 MAIN ST #13 HAINES, AK 99827  
 1945 ALEX HOLDEN WAY #101 JUNEAU, AK 99801  
 solutions@proHNS.com www.proHNS.com

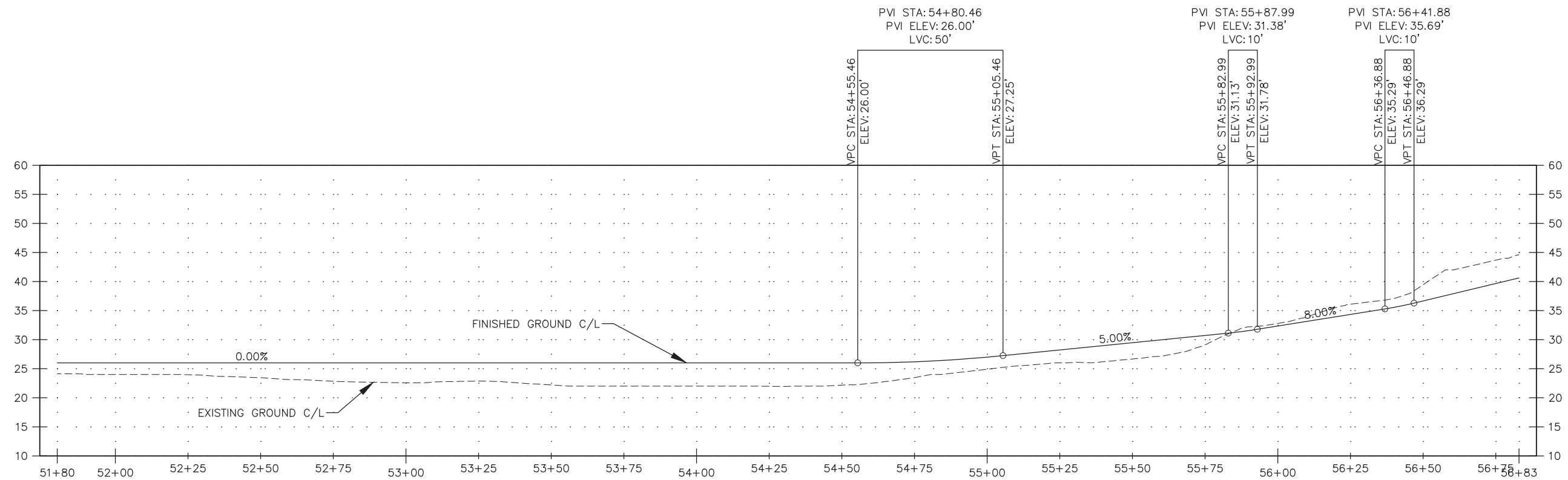
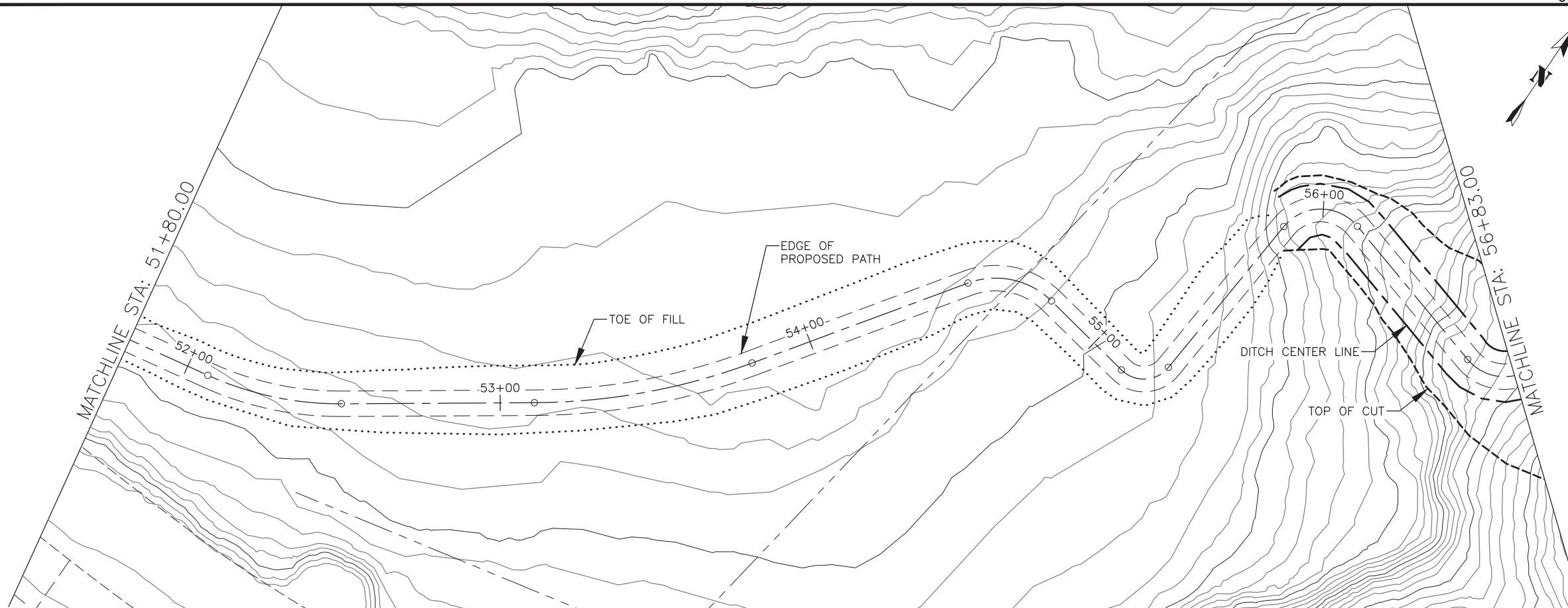
**HAINES BOROUGH ALASKA**

**PORTAGE COVE TRAILS**  
 HAINES BOROUGH

**SEGMENT 6B STA 45+80 TO 51+80**

SHEET NUMBER	
14	OF
16	

C:\Users\lucas\Dropbox (proHNS)\Projects\Haines\Portage Cove Trails\C3D Portage Cove Sheets\Portage\_Cove\_Trails\_Profile.dwg April 2, 2019

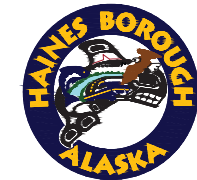


35% DRAFT

RECORD OF REVISIONS			
No.	DATE	DESCRIPTION	BY



DRAWN BY: C. BYDLON  
 DESIGNED BY: L. CHAMBERS  
 CHECKED BY: L. CHAMBERS  
 219 MAIN ST #13  
 HAINES, AK 99827  
 1945 ALEX HOLDEN WAY #101  
 JUNEAU, AK 99801  
 solutions@proHNS.com  
 www.proHNS.com



PORTAGE COVE TRAILS

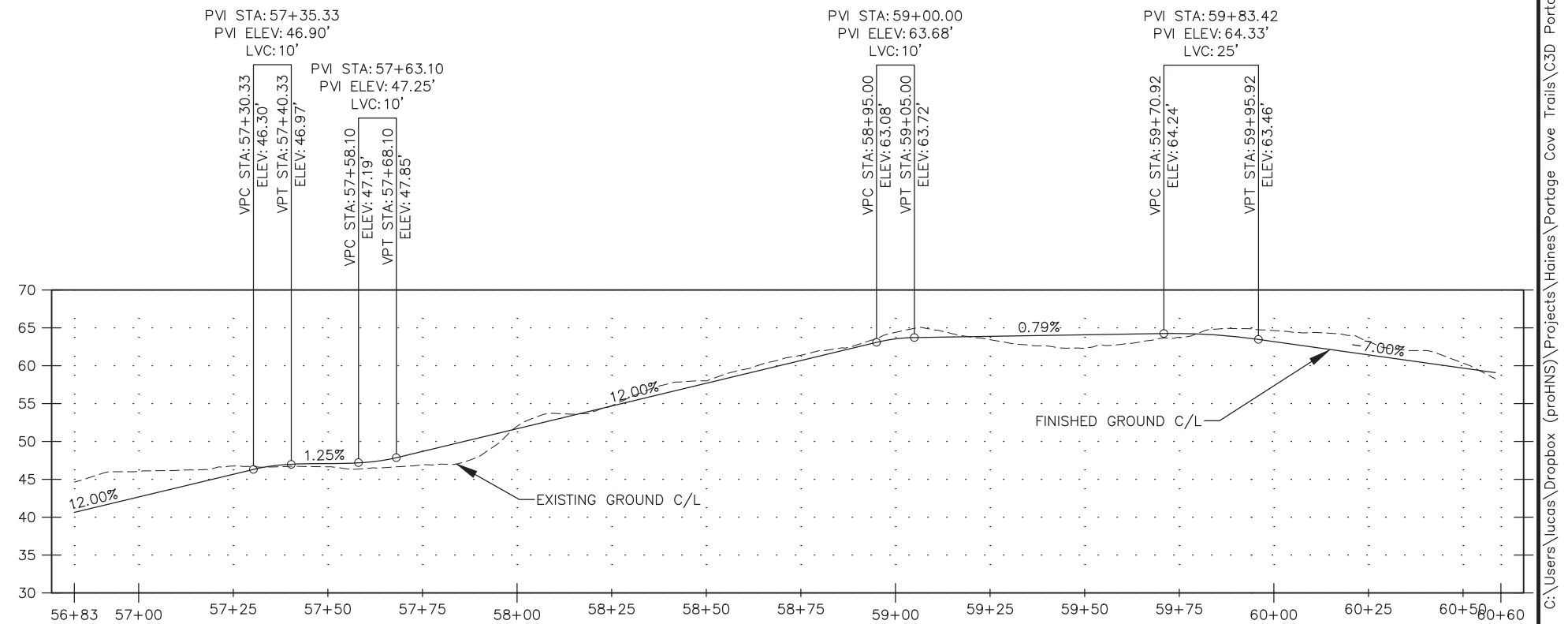
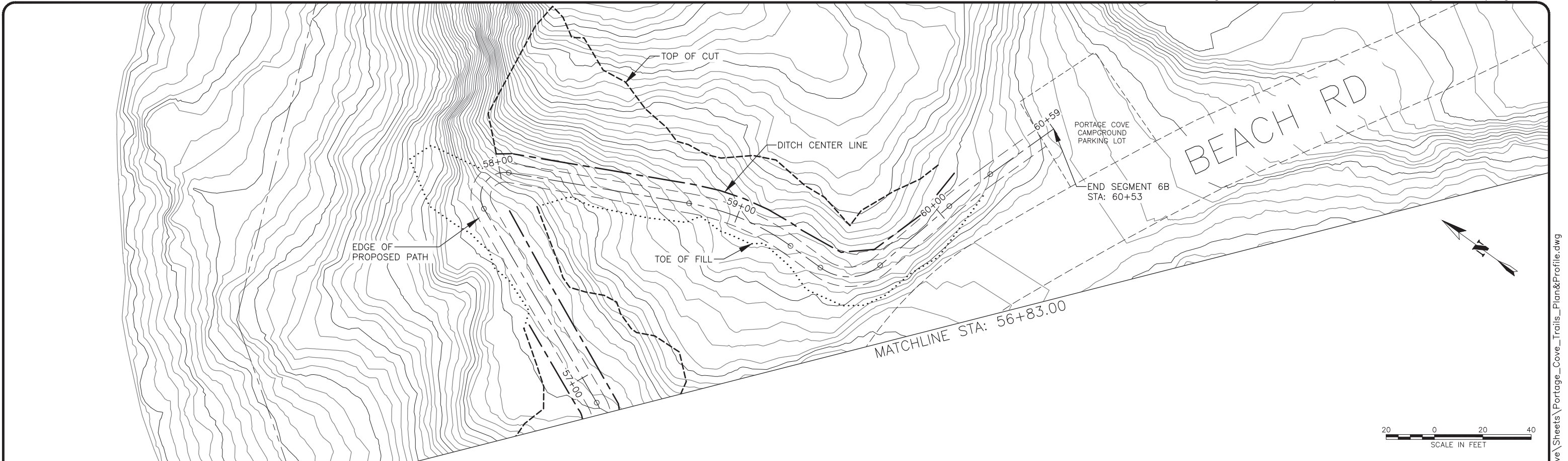
HAINES BOROUGH

SEGMENT 6B STA 51+80 TO 56+83

SHEET NUMBER	
15	OF
16	

C:\Users\lucas\Dropbox (proHNS)\Projects\Haines\Portage Cove Trails\C3D Portage Cove\Sheets\Portage\_Cove\_Trails\_Plan&Profile.dwg April 2, 2019





**35% DRAFT**

RECORD OF REVISIONS			
No.	DATE	DESCRIPTION	BY

**proHNS LLC**  
CERTIFICATE OF AUTHORIZATION #100662

219 MAIN ST #13  
HAINES, AK 99827

1945 ALEX HOLDEN WAY #101  
JUNEAU, AK 99801

solutions@proHNS.com  
www.proHNS.com

**HAINES BOROUGH ALASKA**

DESIGNED BY: L. CHAMBERS  
CHECKED BY: L. CHAMBERS

**PORTAGE COVE TRAILS**

HAINES BOROUGH

**SEGMENT 6B STA 56+83 TO 60+60**

SHEET NUMBER	
16	OF
16	