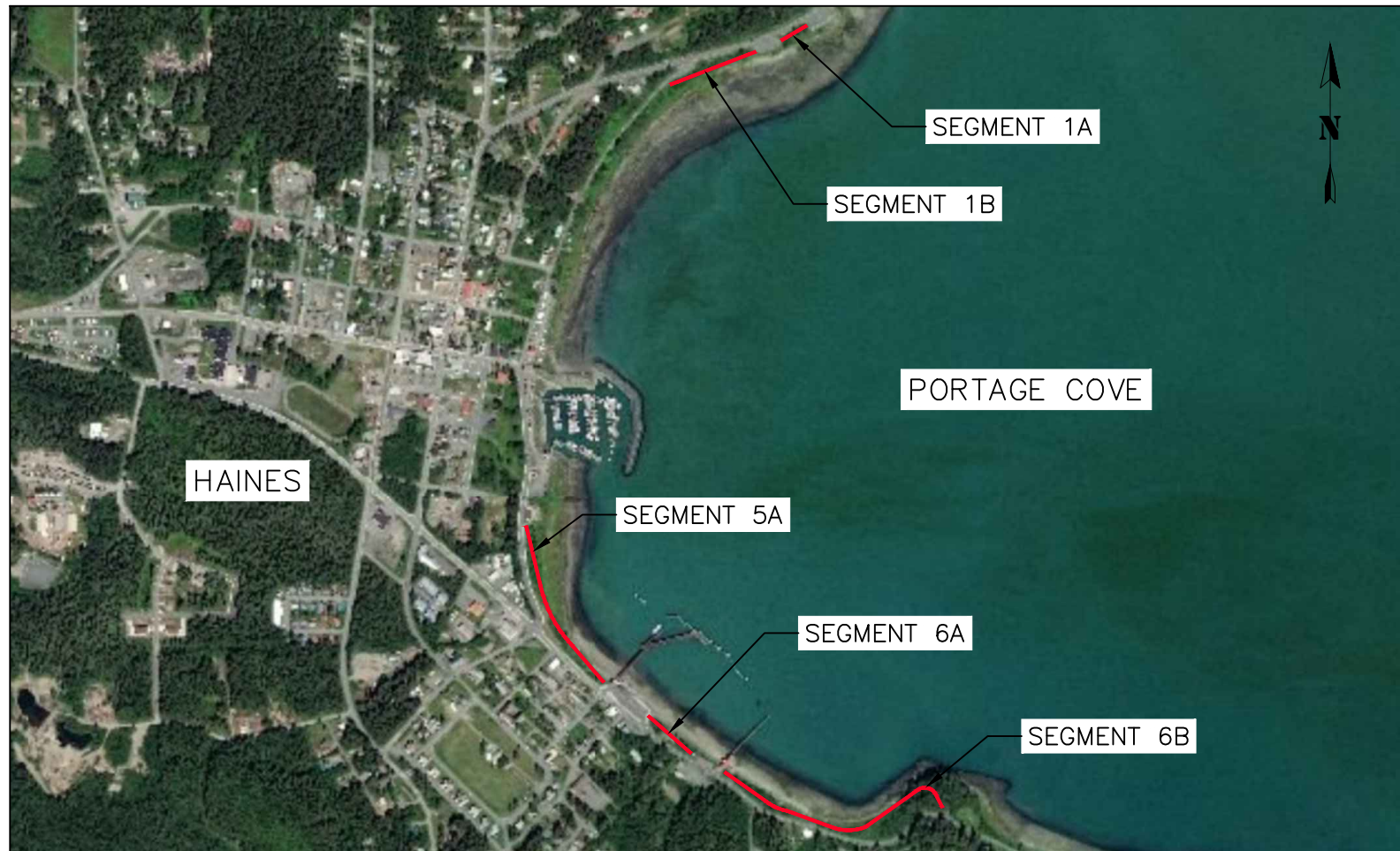


PORTAGE COVE TRAILS

HAINES, AK

PREPARED FOR:
HAINES BOROUGH



PROJECT LOCATION MAP
NTS

| SHEET INDEX | |
|-------------|---------------------------------------|
| SHEET NO. | DESCRIPTION |
| 1 | COVER SHEET |
| 2 | LEGEND, ABBREVIATIONS & GENERAL NOTES |
| 3-4 | TYPICAL SECTIONS |
| 5-7 | DETAILS |
| 8 | PLAN OVERVIEW |
| 9 | PLAN & PROFILE - SEGMENT 1A |
| 10 | PLAN & PROFILE: 1B STA: 5+00 - 10+50 |
| 11 | PLAN & PROFILE: 1B STA: 10+50 - 12+67 |
| 12 | PLAN & PROFILE: 5 STA: 15+00 - 17+50 |
| 13 | PLAN & PROFILE: 5 STA: 25+25 - 26+82 |
| 14 | PLAN & PROFILE: 6A STA: 30+00 - 3425 |
| 15 | PLAN & PROFILE: 6B STA: 40+00 - 45+80 |
| 16 | PLAN & PROFILE: 6B STA: 45+80 - 51+80 |
| 17 | PLAN & PROFILE: 6B STA: 51+80 - 56+83 |
| 18 | PLAN & PROFILE: 6B STA: 56+83 - 60+60 |

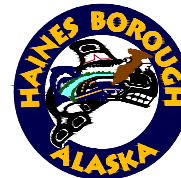


65% DRAFT

| RECORD OF REVISIONS | | | |
|---------------------|------|-------------|----|
| No. | DATE | DESCRIPTION | BY |
| | | | |



DRAWN BY: C. BYDLON
 DESIGNED BY: L. CHAMBERS
 CHECKED BY: G. GLADSTON
 219 MAIN ST #13
 HAINES, AK 99827
 1945 ALEX HOLDEN WAY #101
 JUNEAU, AK 99801
 solutions@proHNS.com
 www.proHNS.com



PORTAGE COVE TRAILS

HAINES BOROUGH

COVER SHEET

| SHEET NUMBER |
|--------------|
| 1 |
| OF |
| 18 |

LEGEND

| DESCRIPTION | EXISTING | PROPOSED |
|-------------------------|----------|----------|
| BUILDING | | |
| CULVERT | | |
| CURB STANDARD | | |
| CURB VALLEY | | |
| DITCH | | |
| EDGE OF ASPHALT | | |
| EDGE OF CONC SIDEWALK | | |
| EDGE OF GRAVEL | | |
| FIRE HYDRANT | | |
| OVERHEAD POWER | | |
| PROPERTY LINE | | |
| RETAINING WALL | | |
| SANITARY SEWER CLEANOUT | | |
| SANITARY SEWER PIPE | | |
| SANITARY SEWER MANHOLE | | |
| SAWCUT & MTE LIMITS | | |
| TOP OF SLOPE | | |
| TOE OF FILL | | |
| UTILITY POLE | | |
| WATER LINE PIPE | | |

ABBREVIATIONS

| | |
|------|----------------------|
| ACP | ASBESTOS CEMENT PIPE |
| BTM | BOTTOM |
| CB | CATCH BASIN |
| C/L | CENTERLINE |
| CONC | CONCRETE |
| CTE | CONNECT TO EXISTING |
| DIA | DIAMETER |
| EL | ELEVATION |
| FG | FINISHED GRADE |
| FH | FIRE HYDRANT |
| INV | INVERT |
| LT | LEFT |
| MH | MANHOLE |
| MIN | MINIMUM |
| MTE | MATCH TO EXISTING |
| NTS | NOT TO SCALE |
| RT | RIGHT |
| ROW | RIGHT-OF-WAY |
| STA | STATION |
| STD | STANDARD |
| TYP | TYPICAL |

GENERAL NOTES

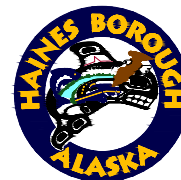
- ALL WORK FOR THESE PLANS SHALL BE CONDUCTED IN STRICT ACCORDANCE WITH ALL APPLICABLE LOCAL, STATE AND FEDERAL LAWS AND STANDARDS.
- CALL HAINES BOROUGH UTILITIES BEFORE YOU DIG FOR UNDERGROUND UTILITY LOCATES. SCOTT BRADFORD (HAINES BOROUGH WATER/SEWER PLANT SUPERVISOR): 907-766-2200, BRAD RYAN (HAINES BOROUGH DIRECTOR OF PUBLIC FACILITIES): 907-766-6414, DAN HANSON (AP&T): 907-766-6500. LOCATIONS AND ELEVATION OF EXISTING UNDERGROUND WATER, SEWER, POWER, TELEPHONE AND CABLE TELEVISION SHOWN ON THE PLANS WERE DERIVED FROM HAINES BOROUGH AS-BUILTS AND FIELD LOCATES. THE ACTUAL LOCATION OF UTILITIES MAY VARY FROM THOSE SHOWN. THE CONTRACTOR IS RESPONSIBLE FOR LOCATING, PROTECTING AND MAINTAINING THE UTILITIES THROUGHOUT THE CONSTRUCTION OF THE PROJECT. ANY DAMAGE TO THE UNDERGROUND UTILITIES DURING CONSTRUCTION SHALL BE PAID FOR BY THE CONTRACTOR AND SHALL BE CONSIDERED INCIDENTAL TO THE CONTRACT.
- A GEOTECHNICAL INVESTIGATION WAS NOT PERFORMED AS PART OF THIS DESIGN. GROUNDWATER, LARGE BOULDERS, BEDROCK, STUMPS, LOGS, ORGANICS, AND OTHER NATIVE MATERIALS MAY BE ENCOUNTERED AT VARIOUS DEPTHS DURING TRENCHING AND SITE GRADING OPERATIONS.
- FIELD SURVEY HAS NOT YET BEEN PERFORMED AS PART OF THIS PROJECT. SURFACE DATA AND EXISTING FEATURES SHOWN ARE BASED OFF LIDAR DATA AND AERIAL PHOTOS.
- PROPERTY BOUNDARY SURVEY LINES ARE A DRAFT AND NOT COMPLETE. PROPERTY BOUNDARY LINES MAY CHANGE FROM WHAT IS CURRENTLY SHOWN.

65% DRAFT

| RECORD OF REVISIONS | | | |
|---------------------|------|-------------|----|
| No. | DATE | DESCRIPTION | BY |
| | | | |



| | |
|---|-------------|
| DRAWN BY: | L. CHAMBERS |
| DESIGNED BY: | L. CHAMBERS |
| CHECKED BY: | G. GLADSKO |
| 219 MAIN ST #13 HAINES, AK 99827 | |
| 1945 ALEX HOLDEN WAY #101 JUNEAU, AK 99801 | |
| solutions@proHNS.com www.proHNS.com | |

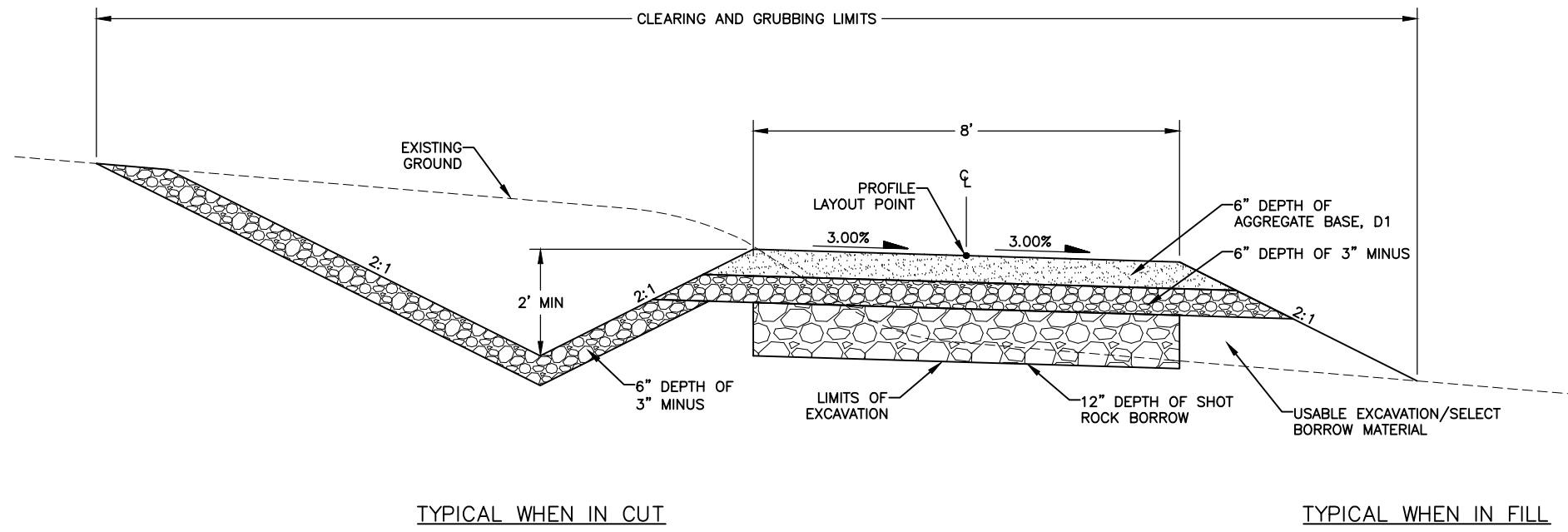


PORTAGE COVE TRAILS

HAINES BOROUGH

LEGEND,
ABBREVIATIONS &
NOTES

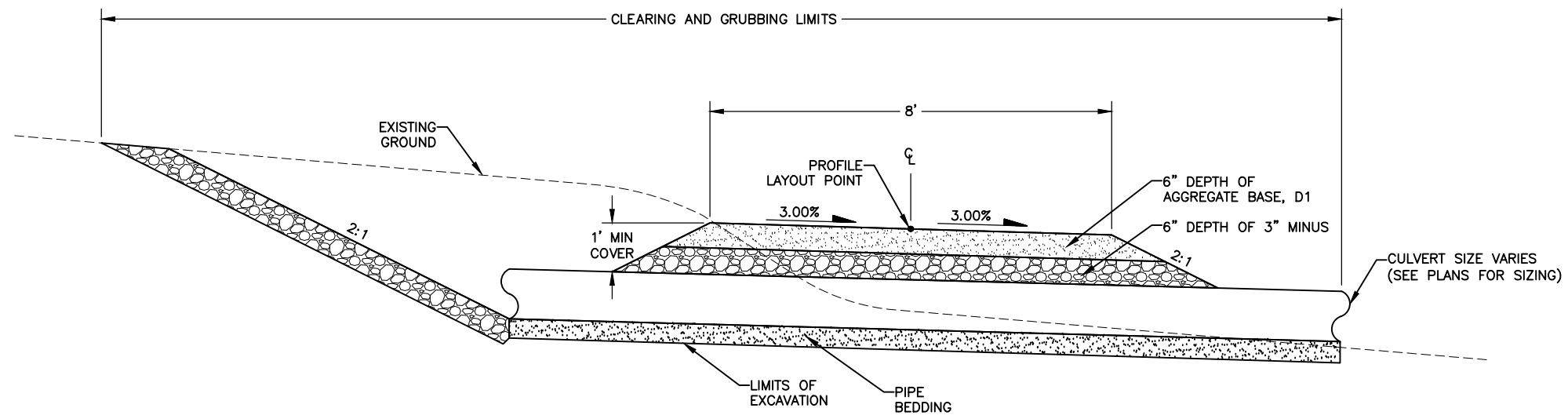
| SHEET NUMBER |
|--------------|
| 2 |
| OF |
| 18 |



TYPICAL WHEN IN CUT

TYPICAL WHEN IN FILL

GRAVEL PATH TYPICAL SECTION
NTS



GRAVEL PATH AT CULVERT CROSSING TYPICAL SECTION
NTS

65% DRAFT

| RECORD OF REVISIONS | | | |
|---------------------|------|-------------|----|
| No. | DATE | DESCRIPTION | BY |
| | | | |



DRAWN BY: L. CHAMBERS
 DESIGNED BY: L. CHAMBERS
 CHECKED BY: G. GLADSKO
 219 MAIN ST #13
 HAINES, AK 99827
 1945 ALEX HOLDEN WAY #101
 JUNEAU, AK 99801
 solutions@proHNS.com
 www.proHNS.com



PORTAGE COVE TRAILS

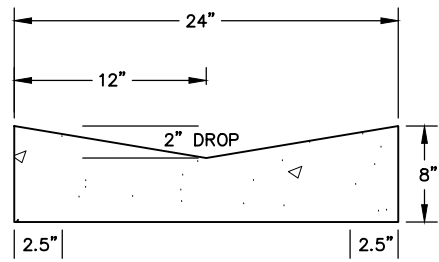
HAINES BOROUGH

PATH TYPICAL SECTIONS

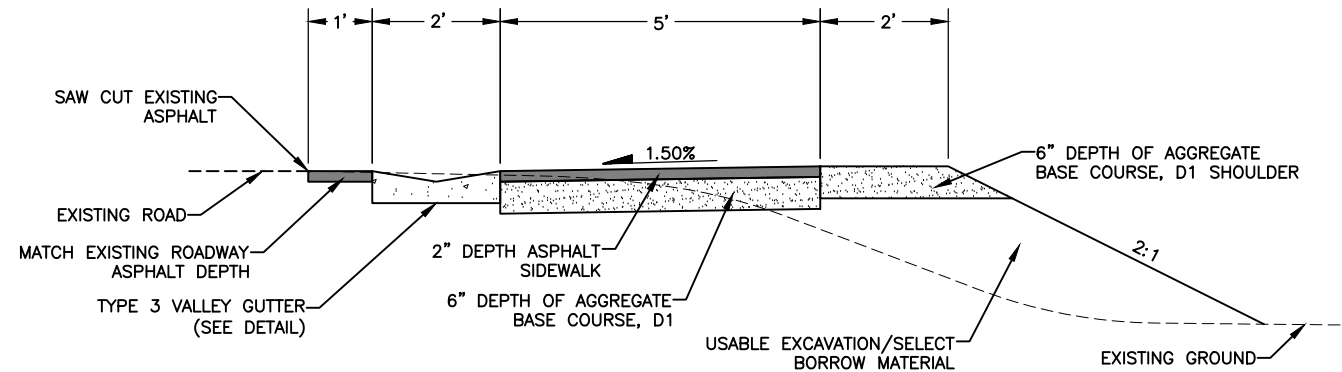
| |
|--------------|
| SHEET NUMBER |
| 3 |
| OF |
| 18 |

SIDEWALK TYPICAL SECTION NOTES

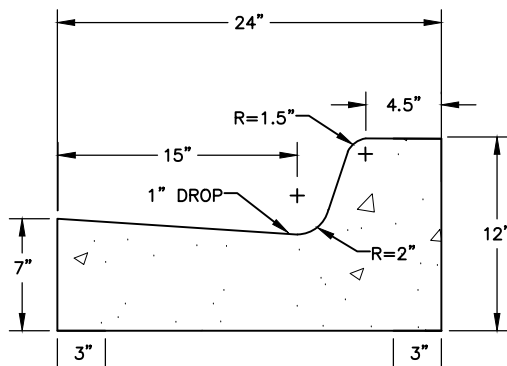
- DRIVEWAYS DISTURBED DURING CONSTRUCTION SHALL BE RECONSTRUCTED TO EQUAL OR BETTER CONDITION WITH SUBGRADE REPLACED IN LAYERS TO MATCH THOSE REMOVED, EXCEPT:
 - EXISTING ASPHALT PAVED DRIVEWAYS DISTURBED DURING CONSTRUCTION SHALL BE SUBCUT TO 8.5" BELOW FINISHED GRADE AND REPLACED WITH 6" OF 2-INCH MINUS SHOT ROCK CAPPED WITH BASE COURSE GRADING, D-1.
 - EXISTING GRAVEL DRIVEWAYS DISTURBED DURING CONSTRUCTION SHALL BE SUBCUT TO 4" BELOW FINISHED GRADE AND REPLACED WITH 4" OF BASE COURSE GRADING, D-1.
 - ORGANICS, ROOTS, WOOD OR OTHER DELETERIOUS MATERIALS ENCOUNTERED IN THE DRIVEWAYS DURING EXCAVATION OPERATIONS SHALL BE REMOVED AS DIRECTED BY THE ENGINEER AND DISPOSED OF AT AN APPROVED OFFSITE DISPOSAL SITE. BACKFILL VOIDS BELOW THE REQUIRED SUBCUT LAYER WITH USABLE EXCAVATION.
- THE LIMITS OF USABLE MATERIAL, BASE COURSE GRADING D-1 AND TOPSOIL BEHIND THE PROPOSED SIDEWALK VARY IN DISTANCE. PLACE AND GRADE THESE MATERIALS TO PROVIDE A SMOOTH, WELL-DRAINED TRANSITION TO EXISTING GRADES, AS DIRECTED BY THE ENGINEER.
- PLACE AND GRADE TOPSOIL AND BASE COURSE GRADING, D-1 USED TO MATCH TO EXISTING GROUND TO PROVIDE A SMOOTH, WELL DRAINED TRANSITION TO EXISTING GRADES, AS DIRECTED BY THE ENGINEER.



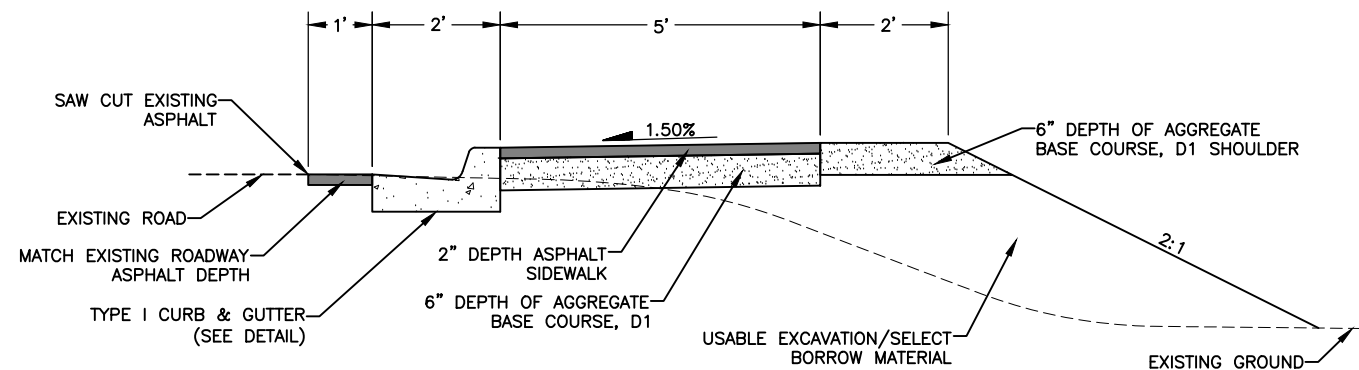
1 TYPE III VALLEY GUTTER DETAIL
4 SCALE: NOT TO SCALE



BEACH ROAD SIDEWALK W/ TYPE III VALLEY GUTTER TYPICAL SECTION
NTS



2 TYPE I CURB AND GUTTER DETAIL
4 SCALE: NOT TO SCALE



BEACH ROAD SIDEWALK W/ TYPE I CURB/GUTTER TYPICAL SECTION
NTS

TRAFFIC CONTROL NOTES

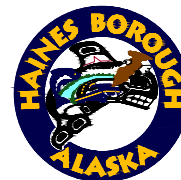
- ALL TRAFFIC TO BE CONTROLLED PER REQUIREMENTS OF THE ALASKA TRAFFIC MANUAL, U.S. DEPARTMENT OF TRANSPORTATION "MANUAL ON UNIFORM TRAFFIC CONTROL DEVICES" AND THE ALASKA SUPPLEMENT.
- DETOURS SHALL BE APPROVED BY THE ENGINEER.
- ROAD CLOSURES SHALL BE APPROVED BY THE ENGINEER.
- THE CONTRACTOR WILL NOT BE PERMITTED TO OBSTRUCT VEHICULAR TRAFFIC BETWEEN THE HOURS OF 4:30 PM AND 8:00 AM SEVEN DAYS A WEEK. DURING THIS PERIOD ONE LANE SHALL BE OPEN TO VEHICULAR TRAFFIC AND HAVE A MINIMUM WIDTH OF 9 FEET.
- PROVIDE ACCESS FOR EMERGENCY VEHICLES AT ALL TIMES.
- A MINIMUM OF ONE LANE (9 FOOT MINIMUM WIDTH) SHALL BE KEPT OPEN TO VEHICULAR TRAFFIC AT ALL TIMES, EXCEPT A FIVE MINUTE MAXIMUM STOPPAGE TO VEHICULAR TRAFFIC WILL BE PERMITTED WITH NO MORE THAN ONE TRAFFIC STOPPAGE PER HOUR. THIS REQUIREMENT DOES NOT APPLY FOR THE DAY OF PAVING.
- PEDESTRIAN TRAFFIC SHALL BE AVAILABLE ALONG AT LEAST ONE SIDE OF THE STREET AT ALL TIMES. THE PEDESTRIAN PATHWAY SHALL BE CLEARLY MARKED AND SHALL SATISFY THE REQUIREMENTS AS DESCRIBED IN THE SPECIAL PROVISIONS.

65% DRAFT

| RECORD OF REVISIONS | | | |
|---------------------|------|-------------|----|
| No. | DATE | DESCRIPTION | BY |
| | | | |



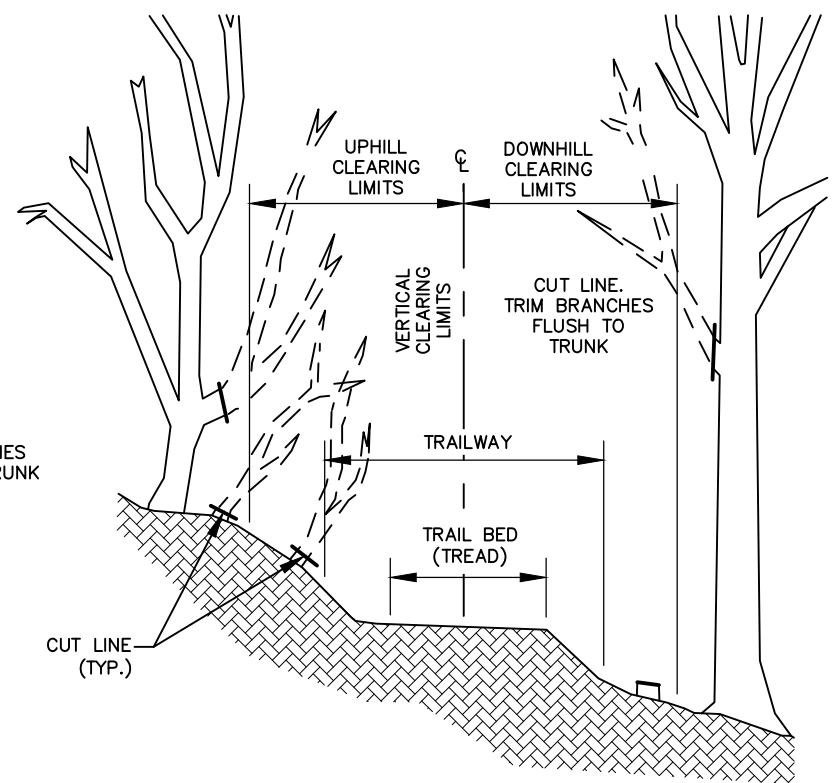
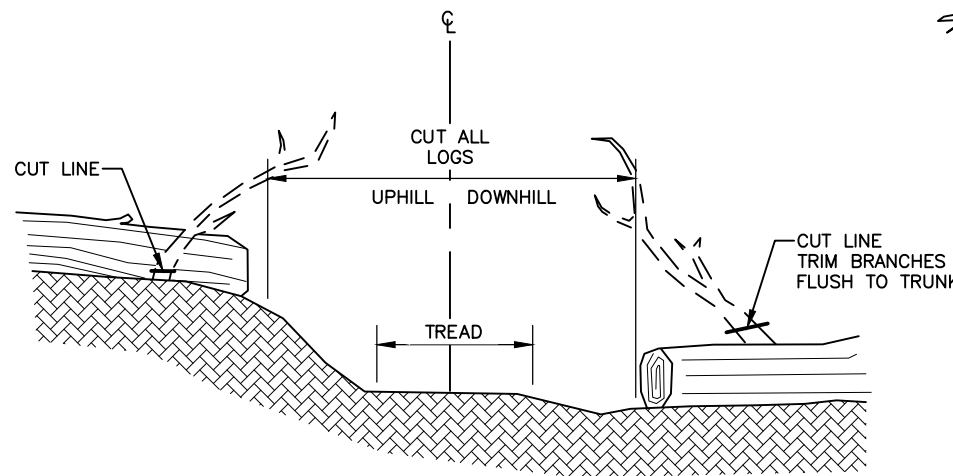
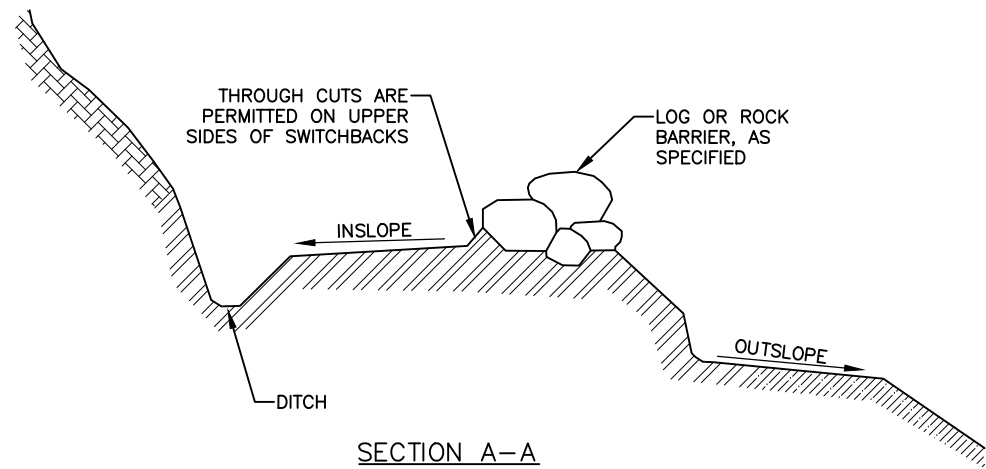
DRAWN BY: L. CHAMBERS
DESIGNED BY: L. CHAMBERS
CHECKED BY: G. GLADSKO
219 MAIN ST #13
HAINES, AK 99827
1945 ALEX HOLDEN WAY #101
JUNEAU, AK 99801
solutions@proHNS.com
www.proHNS.com



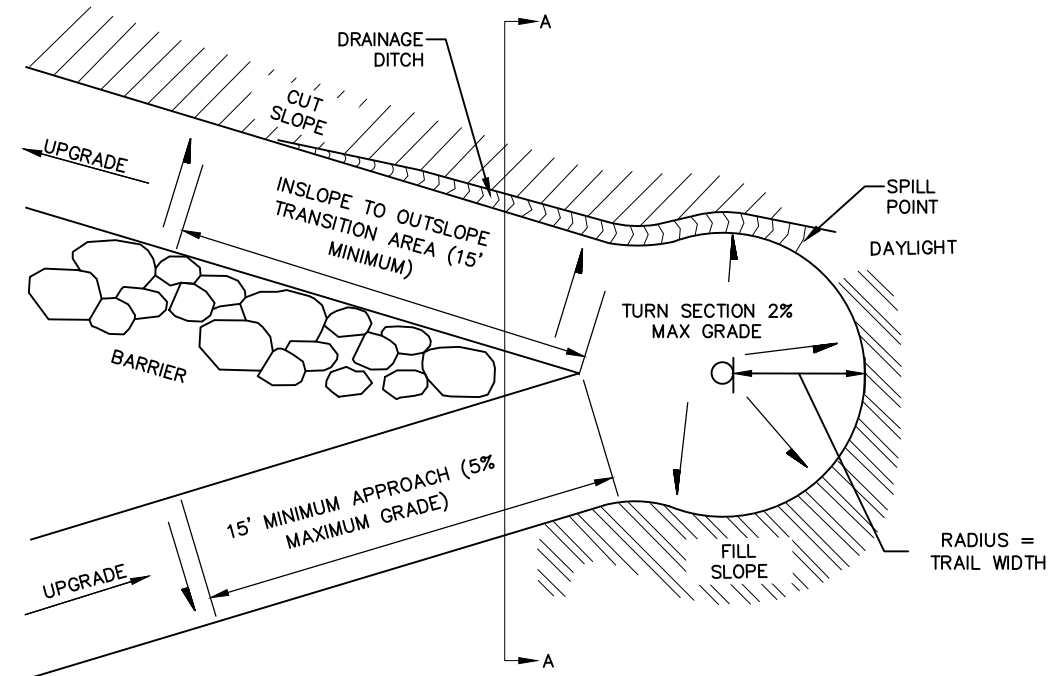
PORTAGE COVE TRAILS
HAINES BOROUGH

SIDEWALK TYPICAL SECTIONS

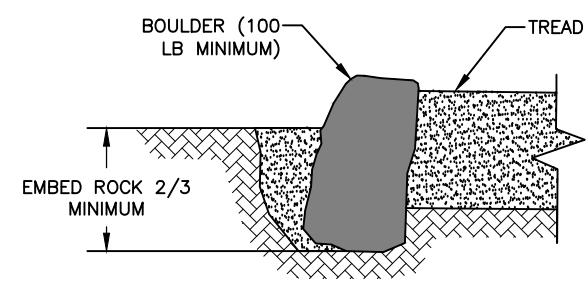
| SHEET NUMBER |
|--------------|
| 4 |
| OF |
| 18 |



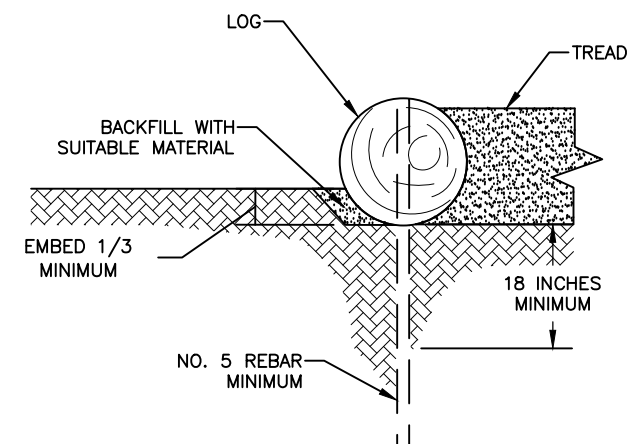
2 CLEARING LIMITS DETAIL
SCALE: NOT TO SCALE



1 SWITCH BACK DETAIL
SCALE: NOT TO SCALE



3 TYPICAL ROCK RETAINER DETAIL
SCALE: NOT TO SCALE



4 TYPICAL LOG RETAINER DETAIL
SCALE: NOT TO SCALE

65% DRAFT

| RECORD OF REVISIONS | | | |
|---------------------|------|-------------|----|
| No. | DATE | DESCRIPTION | BY |
| | | | |



DRAWN BY: C. BYDLON
DESIGNED BY: L. CHAMBERS
CHECKED BY: L. CHAMBERS
219 MAIN ST #13
HAINES, AK 99827
1945 ALEX HOLDEN WAY #101
JUNEAU, AK 99801
solutions@proHNS.com
www.proHNS.com

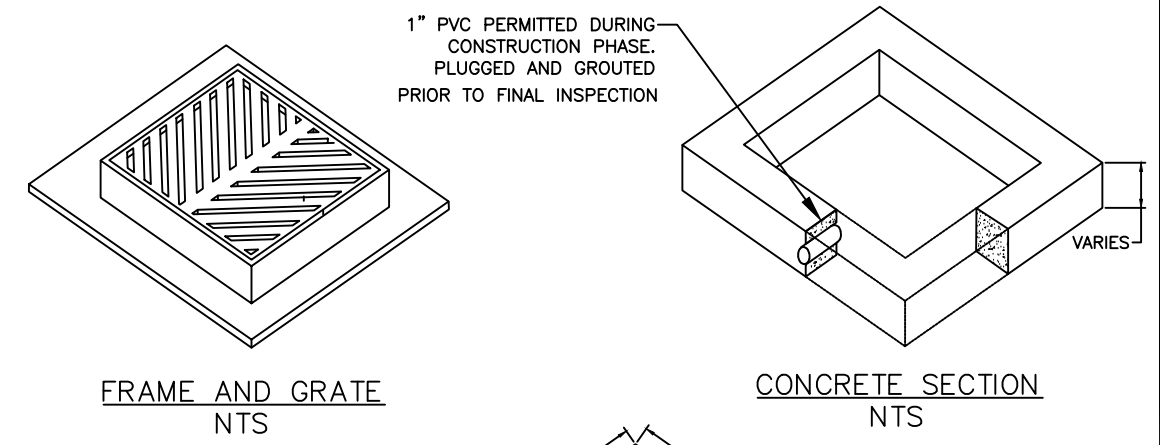
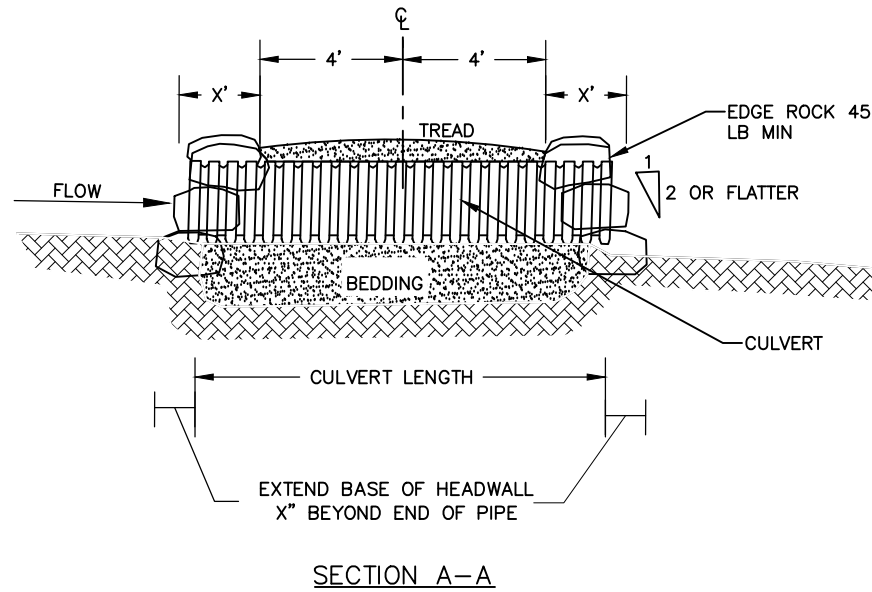
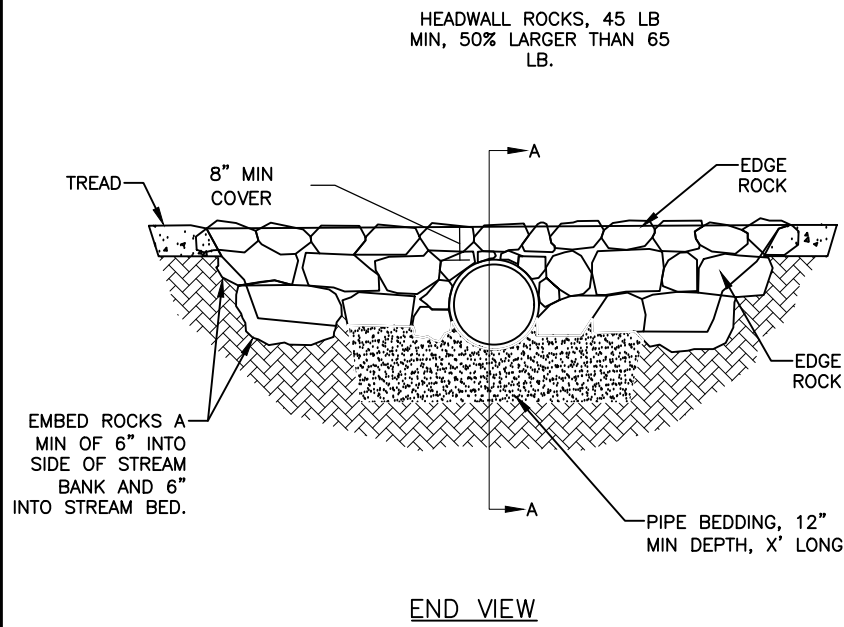


PORTAGE COVE TRAILS

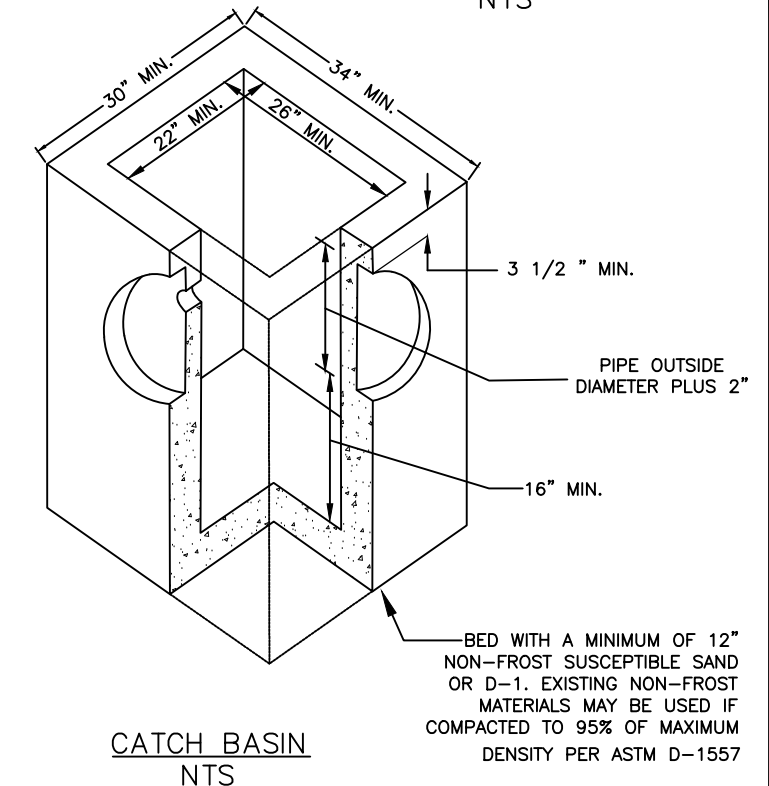
HAINES BOROUGH

DETAILS

| |
|--------------|
| SHEET NUMBER |
| 5 |
| OF |
| 18 |



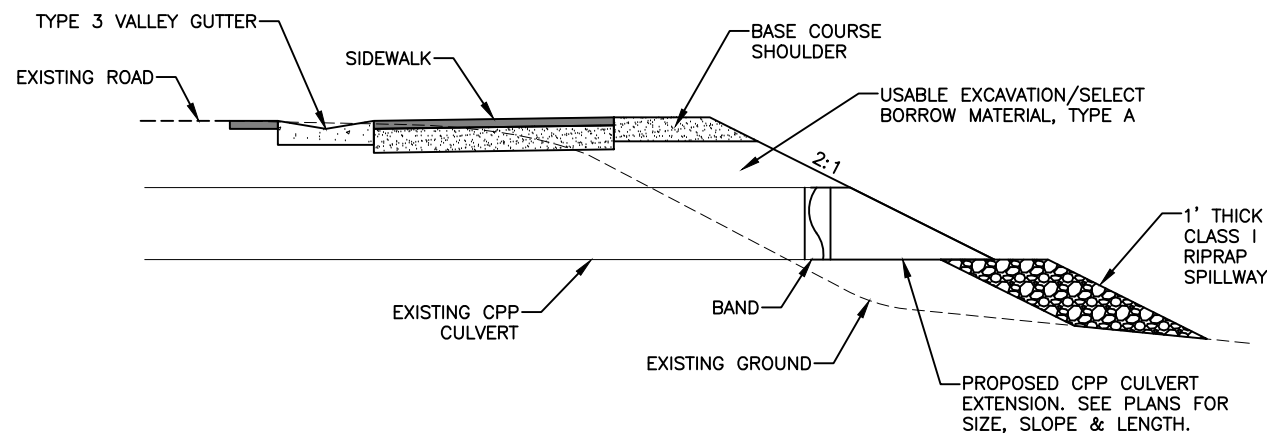
1
6 CULVERT W/ HEADWALLS DETAIL
SCALE: NOT TO SCALE



3
6 CATCH BASIN DETAIL
SCALE: NOT TO SCALE

NOTES:

- ENTIRE KNOCKOUT IS TO BE REMOVED AND SEALED SHUT AROUND PIPE. ALL PIPES ARE TO EXTEND MIN 1" AND MAX 3" INTO CATCH BASIN. GROUT INTERIOR AND EXTERIOR BETWEEN FRAME, SECTIONS, AND CATCH BASIN.
- FRAME AND GRATE SHALL BE DUCTILE IRON. FRAME MAY BE CAST INTO THE TOP UNIT OR PLACED OVER THE OPENING AS APPROVED BY THE ENGINEER. FRAME AND GRATE SHALL BE OF A TYPE THAT WILL NOT CREATE A HAZARD FOR BICYCLE TRAFFIC.
- CATCH BASIN SHALL MEET HIGHWAY STANDARD-2D LOAD REQUIREMENTS.
- MINIMUM STEEL SHALL BE SPECIFIED BY ASTM c-478-69.
- ADJUSTING RING SHALL BE THE SAME SIZE AS THE CATCH BASIN.
- THE AREA BETWEEN THE TOP OF THE CATCH BASIN AND THE FRAME SHALL BE FORMED AND FILLED WITH CONCRETE. NO BRICKS, WOOD OR OTHER MATERIALS PERMITTED FOR ADJUSTING GRADE.



2
6 EXISTING CULVERT EXTENSION DETAIL
SCALE: NOT TO SCALE

65% DRAFT

| RECORD OF REVISIONS | | | |
|---------------------|------|-------------|----|
| No. | DATE | DESCRIPTION | BY |
| | | | |

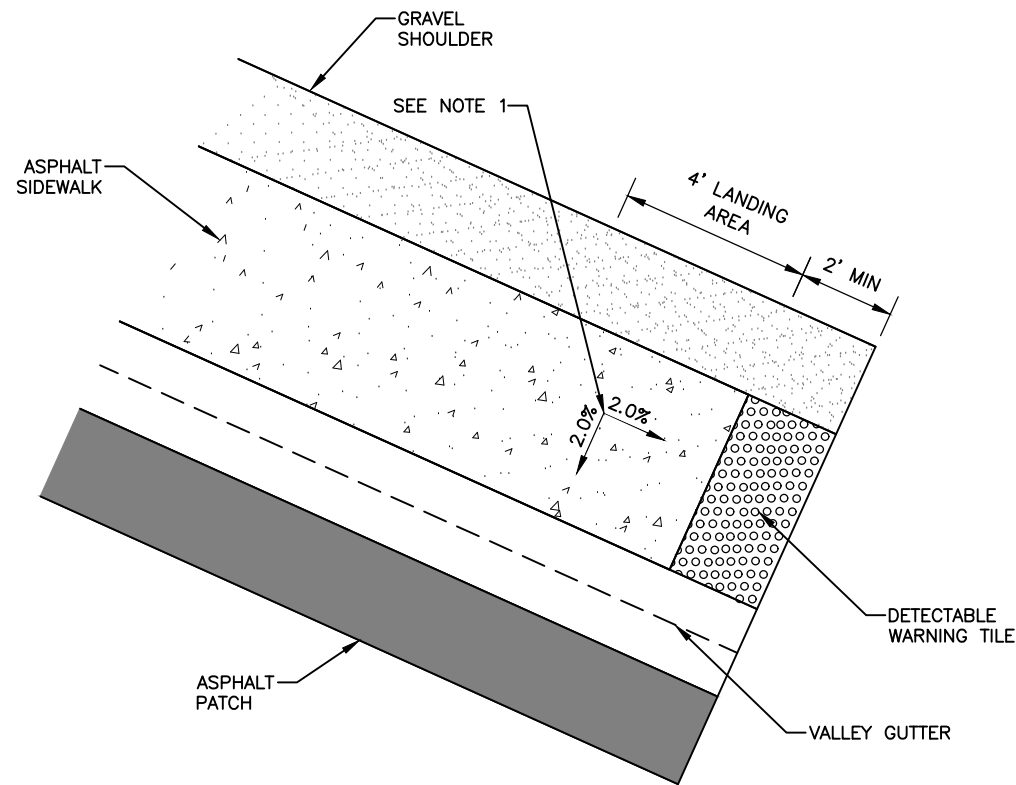
DRAWN BY: C. BYDLON
 DESIGNED BY: L. CHAMBERS
 CHECKED BY: L. CHAMBERS
 219 MAIN ST #13
 HAINES, AK 99827
 1945 ALEX HOLDEN WAY #101
 JUNEAU, AK 99801
 solutions@proHNS.com
 www.proHNS.com



PORTAGE COVE TRAILS
HAINES BOROUGH

DETAILS

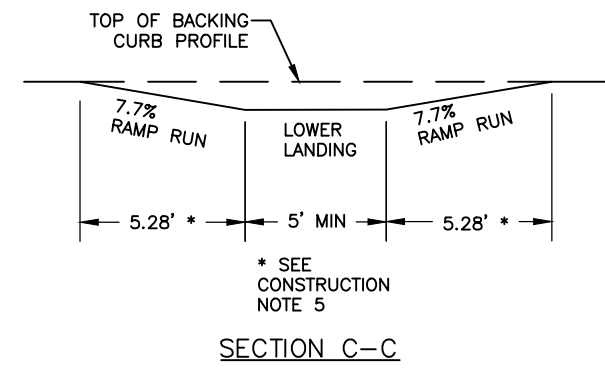
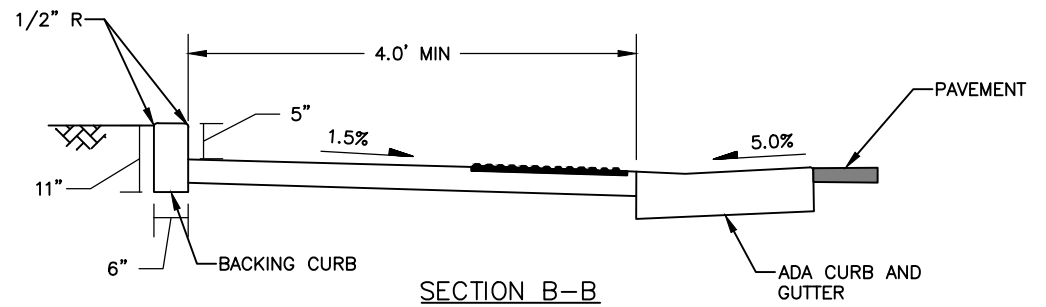
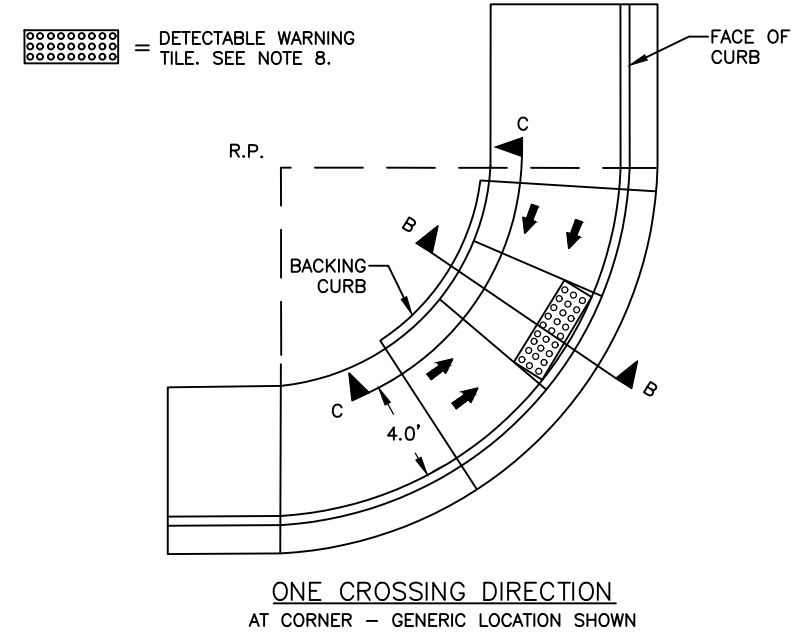
| SHEET NUMBER |
|--------------|
| 6 |
| OF |
| 18 |



2/7 ADA LANDING DETAIL
SCALE: NOT TO SCALE

NOTES:

- 1. LANDING AREA - 4'x4' MIN DIMENSIONS AND MAX 2% SLOPE IN ALL DIRECTIONS.



1/7 SIDEWALK TO GRAVEL PATH TRANSITION
SCALE: NOT TO SCALE

3/7 SIDEWALK TO GRAVEL PATH TRANSITION
SCALE: NOT TO SCALE

65% DRAFT

| RECORD OF REVISIONS | | | |
|---------------------|------|-------------|----|
| No. | DATE | DESCRIPTION | BY |
| | | | |



DRAWN BY: C. BYDLON
DESIGNED BY: L. CHAMBERS
CHECKED BY: L. CHAMBERS
219 MAIN ST #13
HAINES, AK 99827
1945 ALEX HOLDEN WAY #101
JUNEAU, AK 99801
solutions@proHNS.com
www.proHNS.com



PORTAGE COVE TRAILS

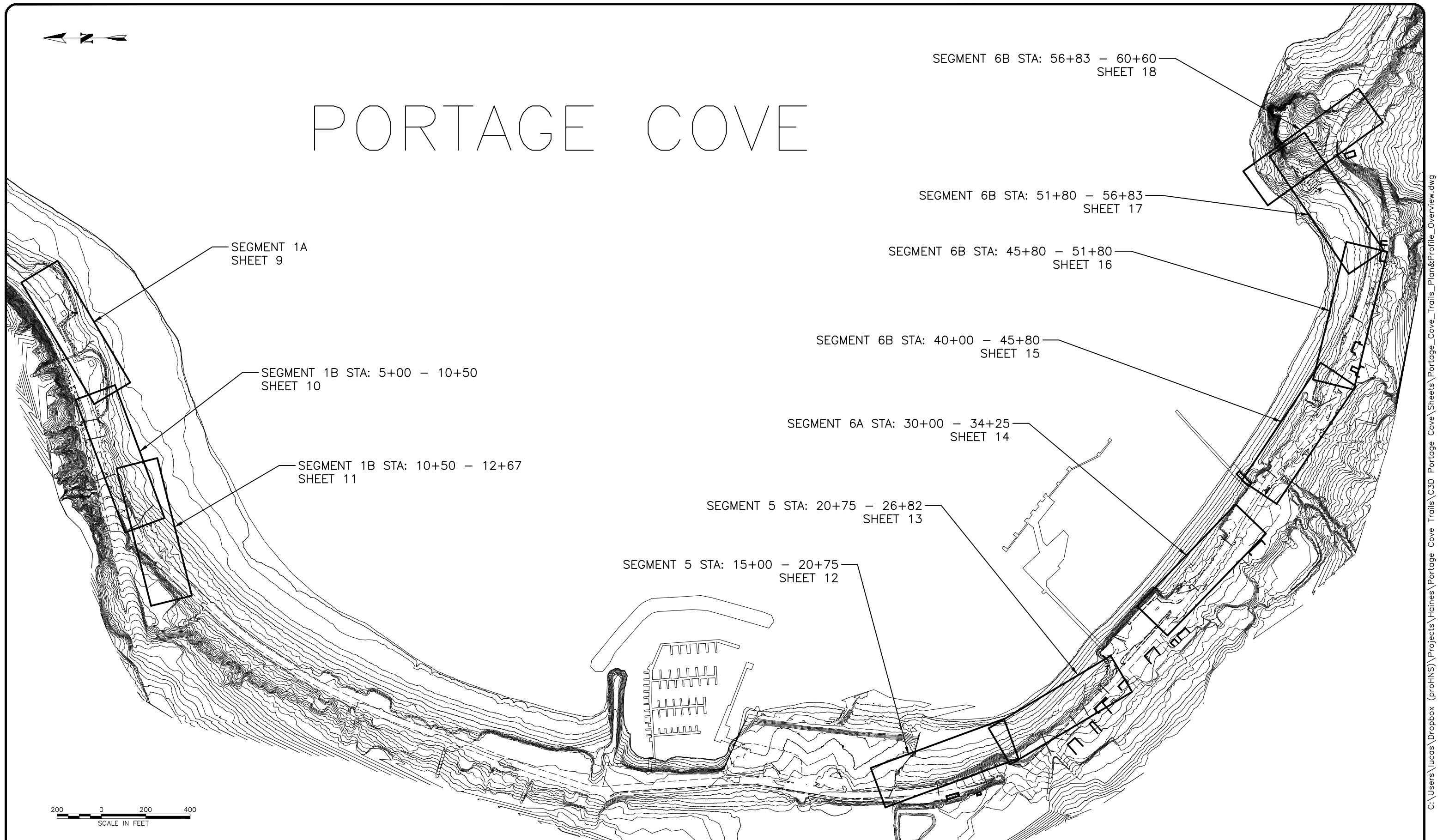
HAINES BOROUGH

DETAILS

| | |
|--------------|----|
| SHEET NUMBER | 7 |
| OF | 18 |



PORTAGE COVE



65% DRAFT

| RECORD OF REVISIONS | | | |
|---------------------|------|-------------|----|
| No. | DATE | DESCRIPTION | BY |
| | | | |

proHNS LLC
CERTIFICATE OF AUTHORIZATION
#100662

DRAWN BY: C. BYDLON
DESIGNED BY: L. CHAMBERS
CHECKED BY: L. CHAMBERS
219 MAIN ST #13
HAINES, AK 99827
1945 ALEX HOLDEN WAY #101
JUNEAU, AK 99801
solutions@proHNS.com
www.proHNS.com

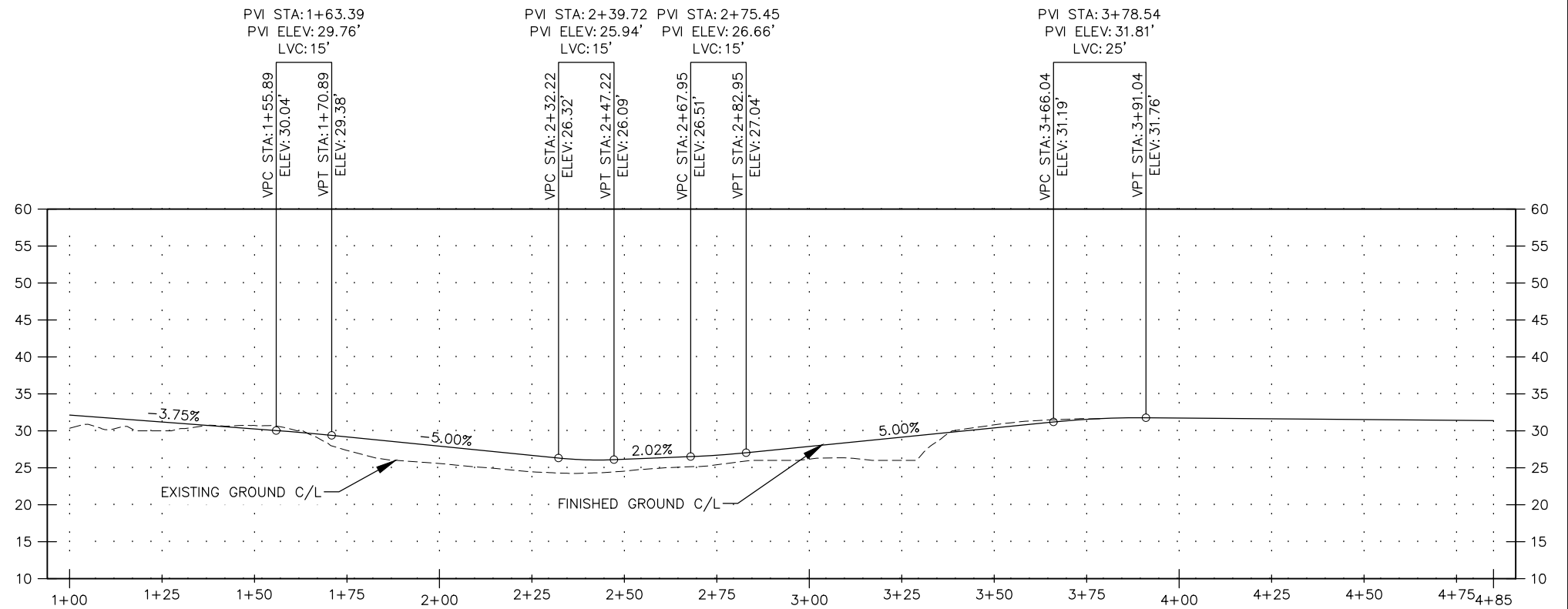
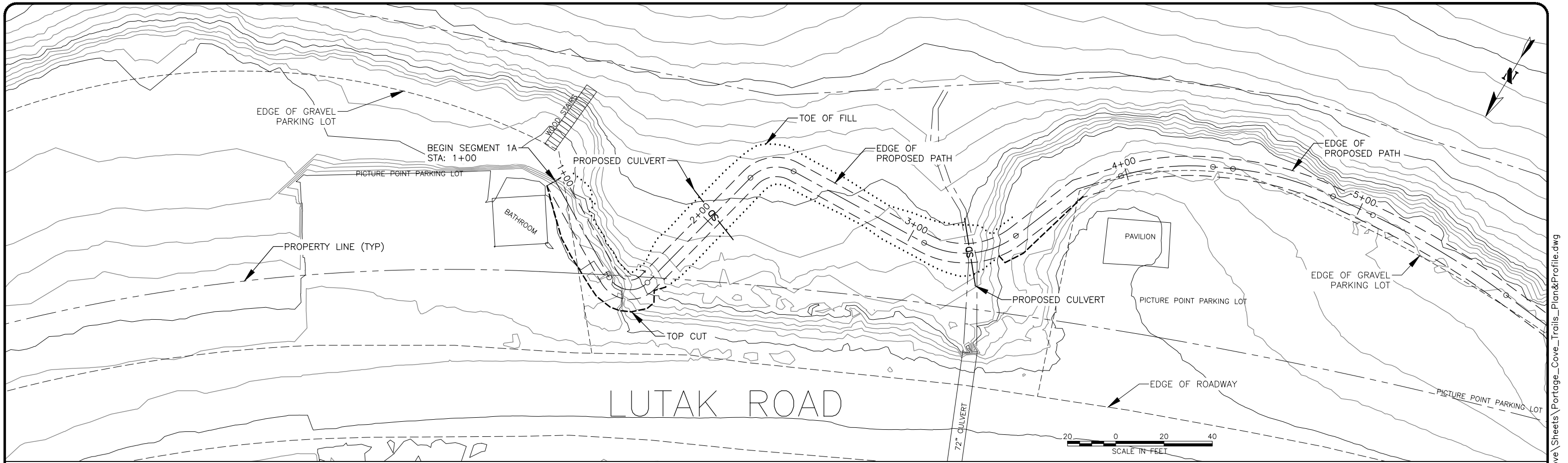


PORTAGE COVE TRAILS

HAINES BOROUGH

PLAN & PROFILE SHEETS
OVERVIEW

| SHEET NUMBER | |
|--------------|----|
| 8 | OF |
| 18 | |



65% DRAFT

| RECORD OF REVISIONS | | | |
|---------------------|------|-------------|----|
| No. | DATE | DESCRIPTION | BY |
| | | | |



DRAWN BY: C. BYDLON
 DESIGNED BY: L. CHAMBERS
 CHECKED BY: L. CHAMBERS
 219 MAIN ST #13
 HAINES, AK 99827
 1945 ALEX HOLDEN WAY #101
 JUNEAU, AK 99801
 solutions@proHNS.com
 www.proHNS.com



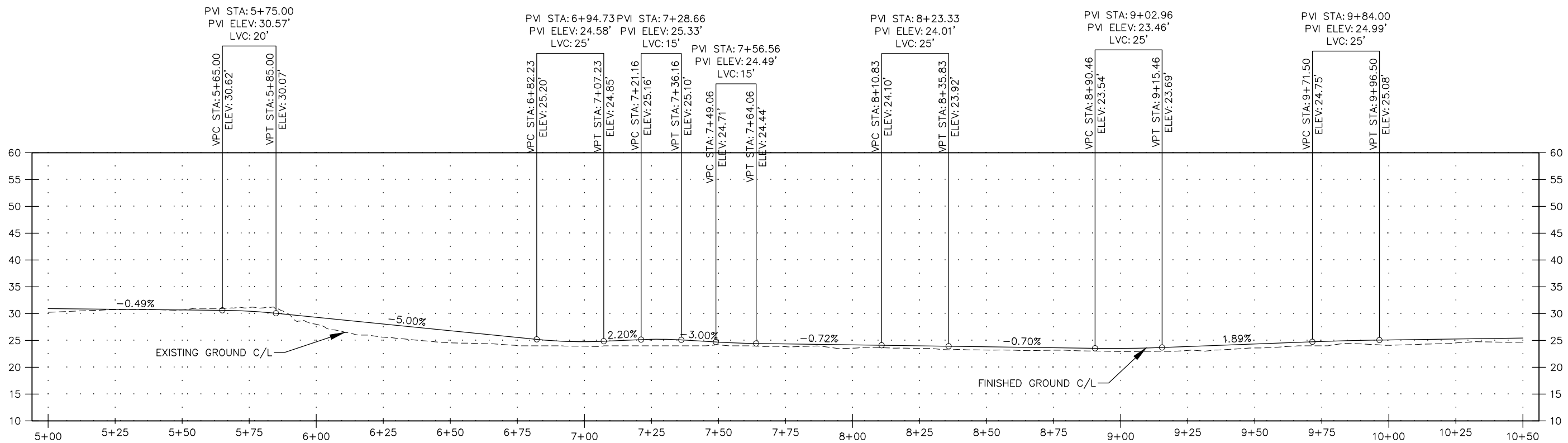
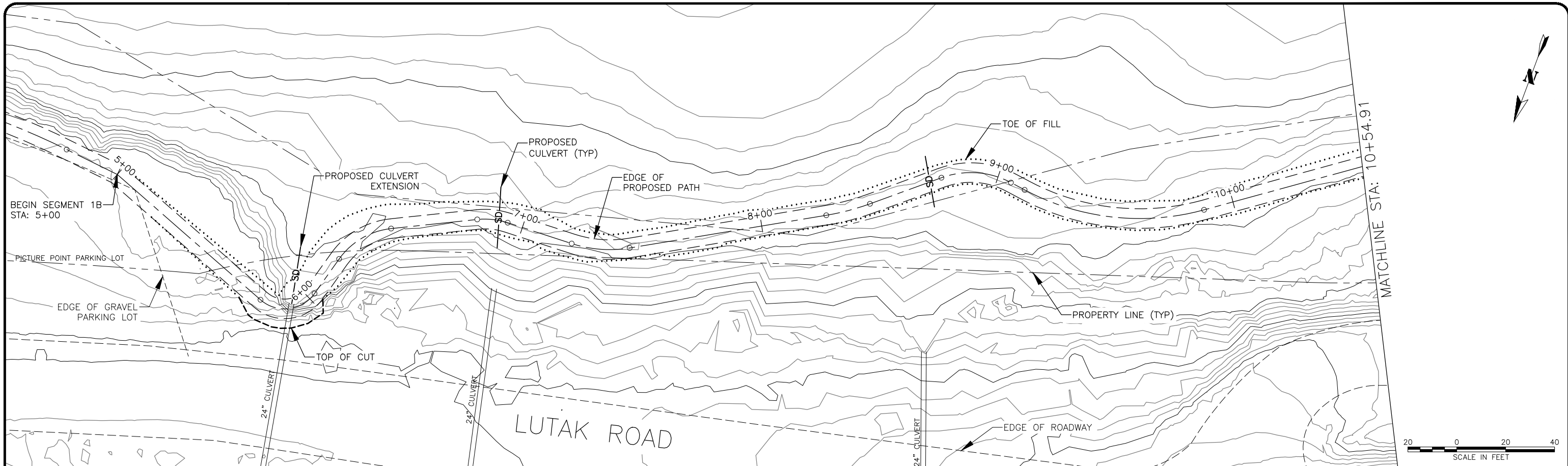
PORTAGE COVE TRAILS

HAINES BOROUGH

SEGMENT 1A


| SHEET NUMBER | |
|--------------|----|
| 9 | OF |
| 18 | |

C:\Users\lucas\Dropbox (proHNS)\Projects\Haines\Portage Cove Trails\C3D Portage Cove Sheets\Portage_Cove_Trails_Plan&Profile.dwg
 May 9, 2019

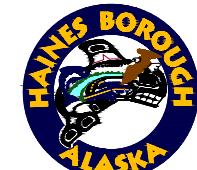


65% DRAFT

| RECORD OF REVISIONS | | | |
|---------------------|------|-------------|----|
| No. | DATE | DESCRIPTION | BY |
| | | | |



proHNS LLC
 CERTIFICATE OF AUTHORIZATION #100662
 219 MAIN ST #13 HAINES, AK 99827
 1945 ALEX HOLDEN WAY #101 JUNEAU, AK 99801
 solutions@proHNS.com www.proHNS.com



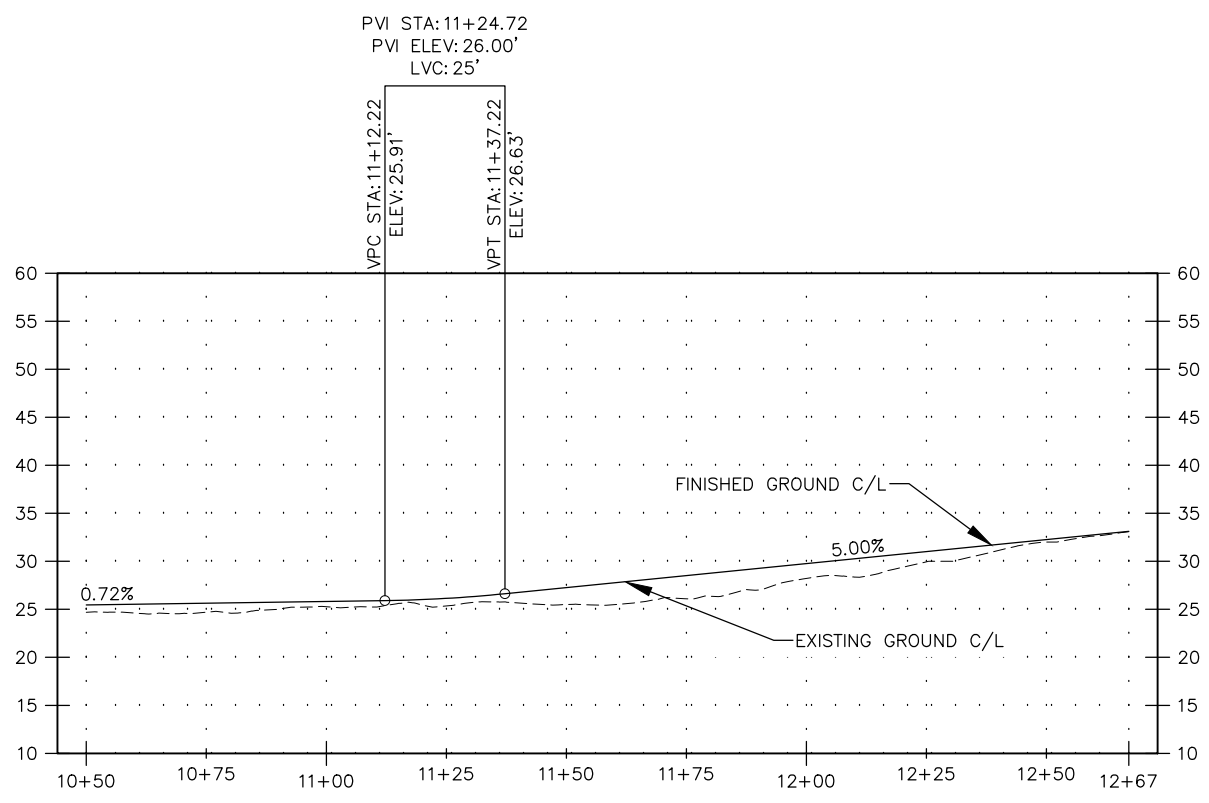
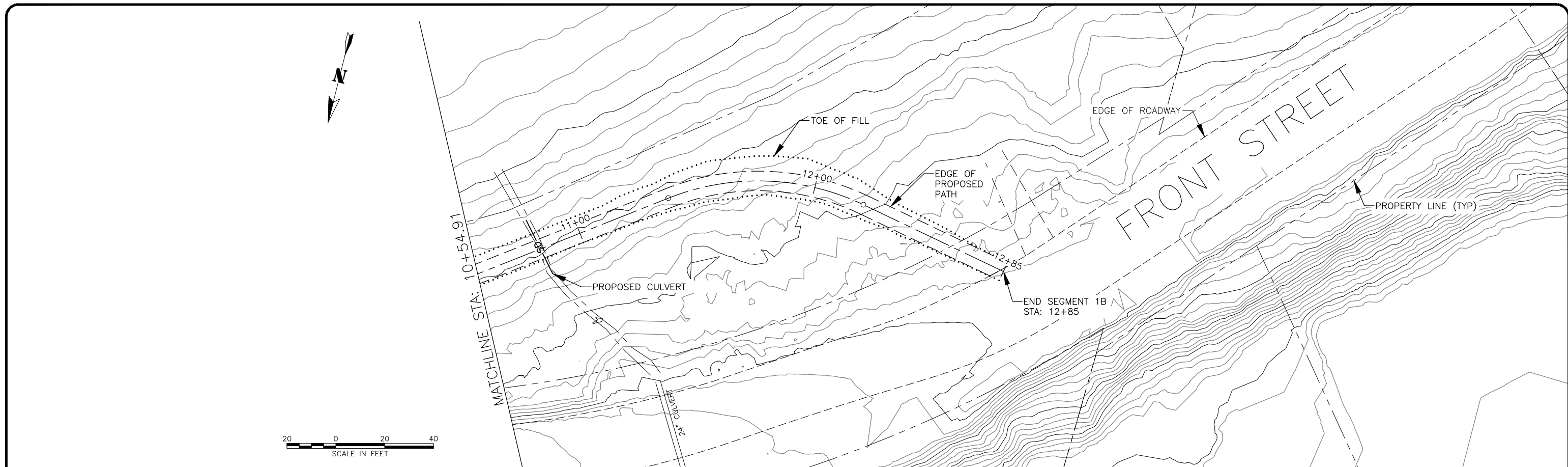
HAINES BOROUGH ALASKA

DESIGNED BY: L. CHAMBERS
 CHECKED BY: L. CHAMBERS
PORTAGE COVE TRAILS
 HAINES BOROUGH

SEGMENT 1B STA 5+00 - 10+50

| SHEET NUMBER | |
|--------------|----|
| 10 | OF |
| 18 | |

C:\Users\lucas\Dropbox (proHNS)\Projects\Haines\Portage Cove Trails\C3D Portage Cove\Sheets\Portage_Cove_Trails_Plan&Profile.dwg May 9, 2019



65% DRAFT

| RECORD OF REVISIONS | | | |
|---------------------|------|-------------|----|
| No. | DATE | DESCRIPTION | BY |
| | | | |

proHNS LLC
 CERTIFICATE OF AUTHORIZATION #100662
 219 MAIN ST #13 HAINES, AK 99827
 1945 ALEX HOLDEN WAY #101 JUNEAU, AK 99801
 solutions@proHNS.com www.proHNS.com

HAINES BOROUGH ALASKA

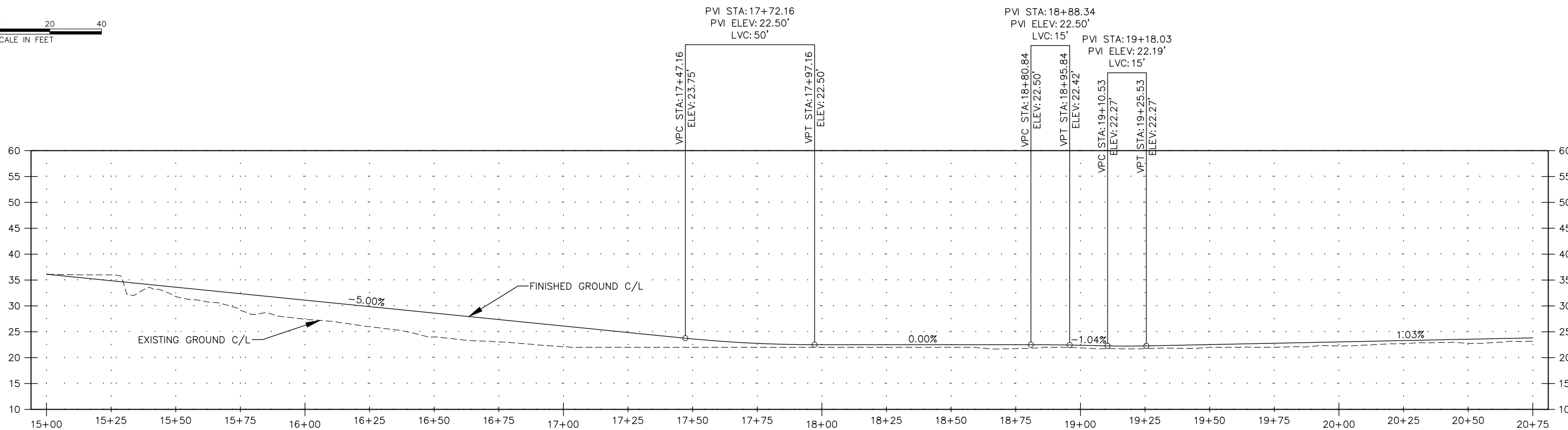
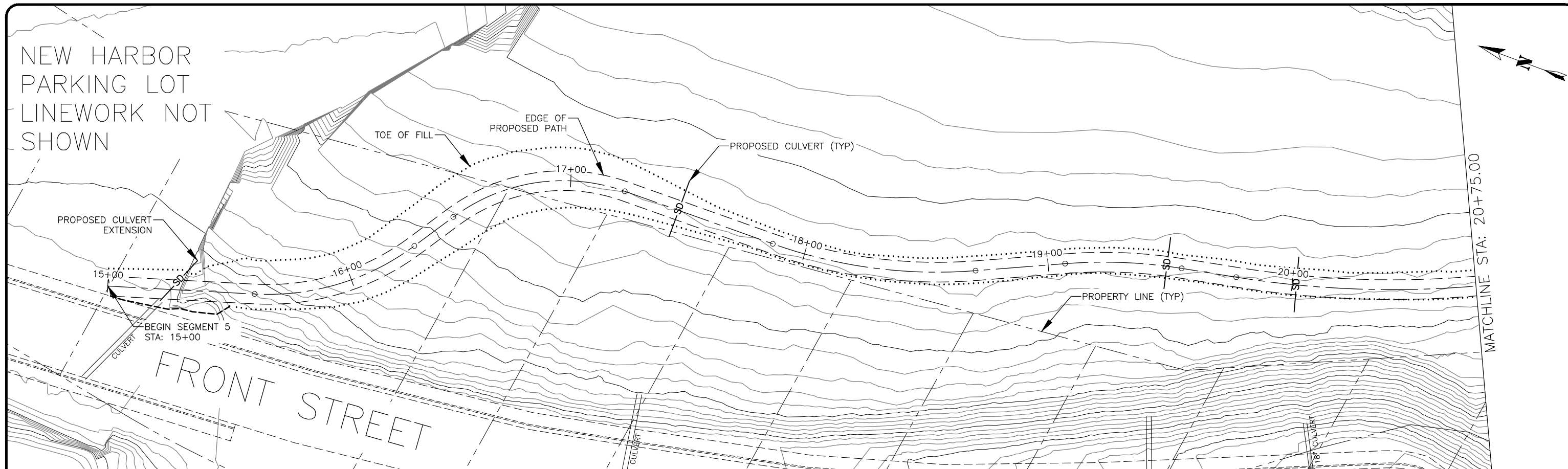
PORTAGE COVE TRAILS
 HAINES BOROUGH

SEGMENT 1B STA 10+50 TO 12+85

| SHEET NUMBER | |
|--------------|----|
| 11 | OF |
| 18 | |

C:\Users\lucas\Dropbox (proHNS)\Projects\Haines\Portage Cove Trails\C3D Portage Cove\Sheets\Cove_Trails_Plan&Profile.dwg May 9, 2019

NEW HARBOR
PARKING LOT
LINEWORK NOT
SHOWN



| RECORD OF REVISIONS | | | |
|---------------------|------|-------------|----|
| No. | DATE | DESCRIPTION | BY |
| | | | |



DRAWN BY: C. BYDLON
DESIGNED BY: L. CHAMBERS
CHECKED BY: L. CHAMBERS
219 MAIN ST #13
HAINES, AK 99827
1945 ALEX HOLDEN WAY #101
JUNEAU, AK 99801
solutions@proHNS.com
www.proHNS.com



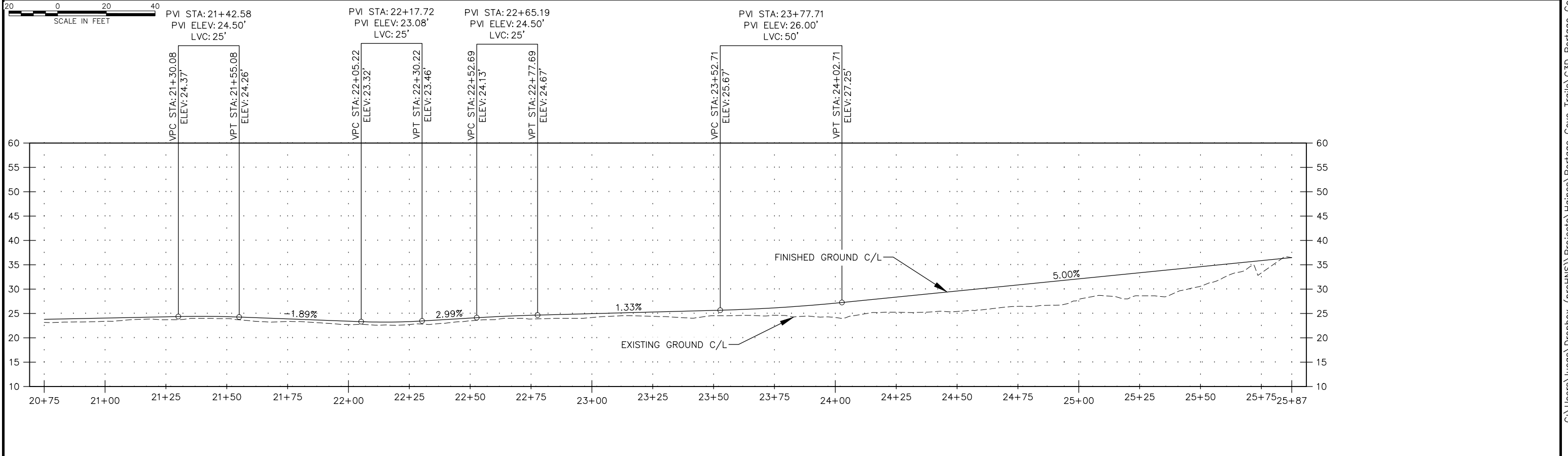
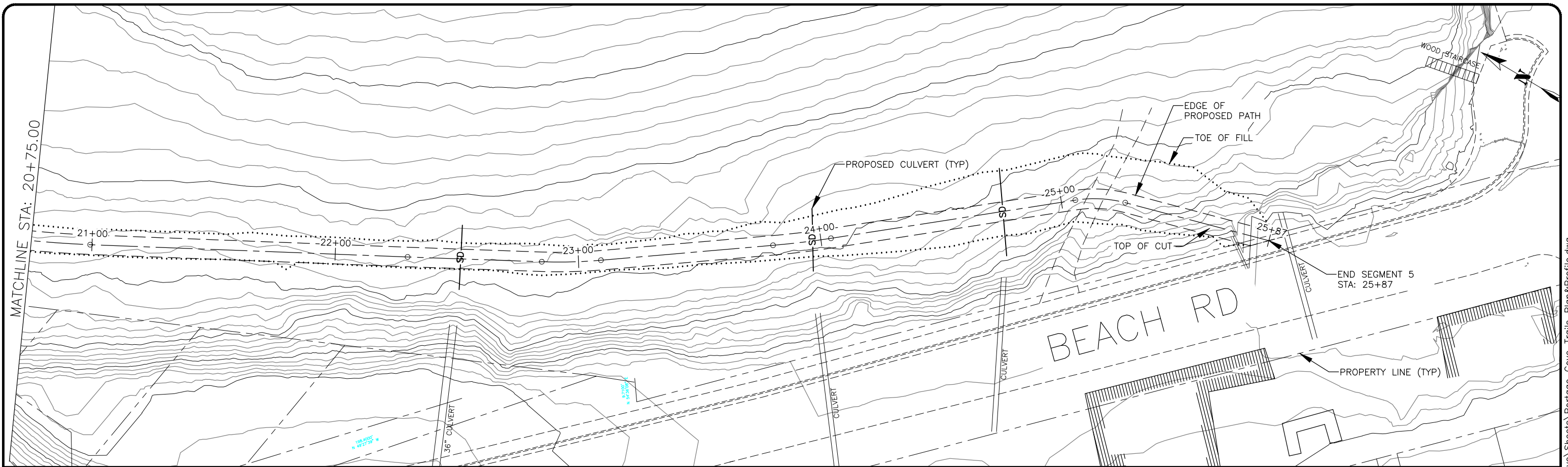
PORTAGE COVE TRAILS
HAINES BOROUGH

SEGMENT 5A STA 15+00
TO 20+75

| SHEET NUMBER | |
|--------------|----|
| 12 | OF |
| 18 | |

C:\Users\lucas\Dropbox (proHNS)\Projects\Haines\Portage Cove Trails\C3D Portage Cove\Sheets\Portage_Cove_Trails_Plan&Profile.dwg

May 9, 2019



| RECORD OF REVISIONS | | | |
|---------------------|------|-------------|----|
| No. | DATE | DESCRIPTION | BY |
| | | | |

proHNS LLC
CERTIFICATE OF AUTHORIZATION #100662

219 MAIN ST #13
HAINEs, AK 99827

1945 ALEX HOLDEN WAY #101
JUNEAU, AK 99801

solutions@proHNS.com
www.proHNS.com

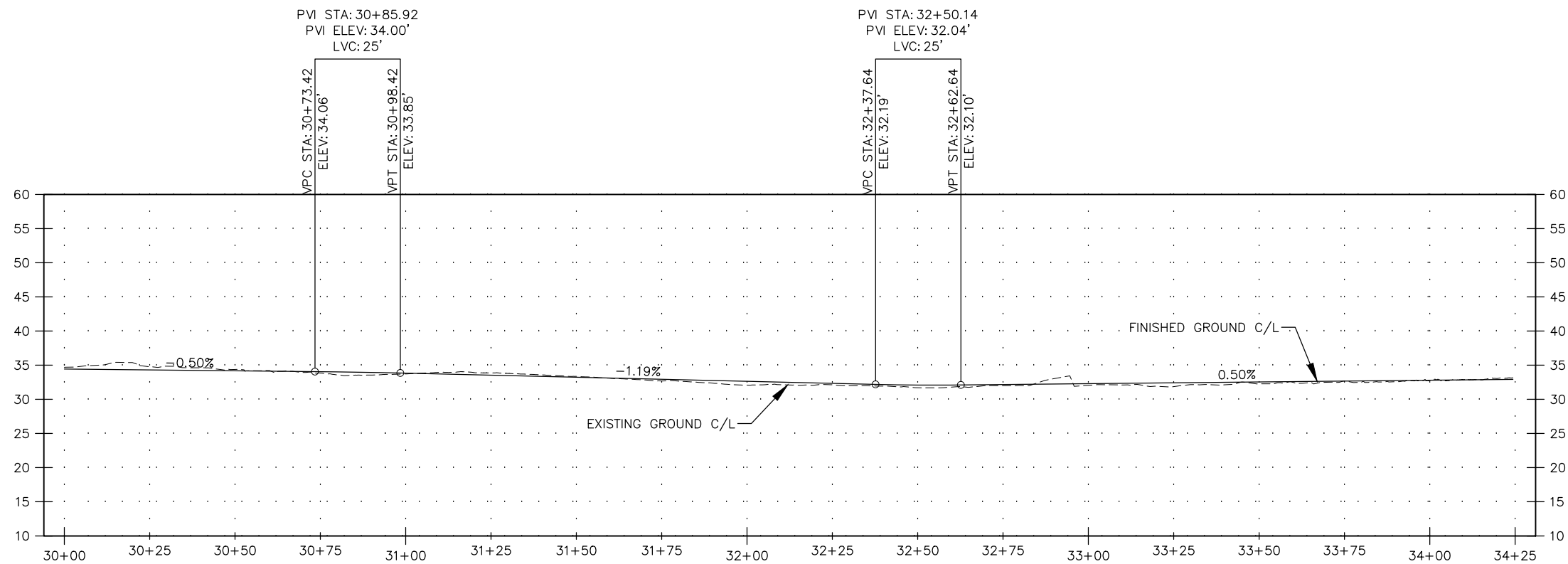
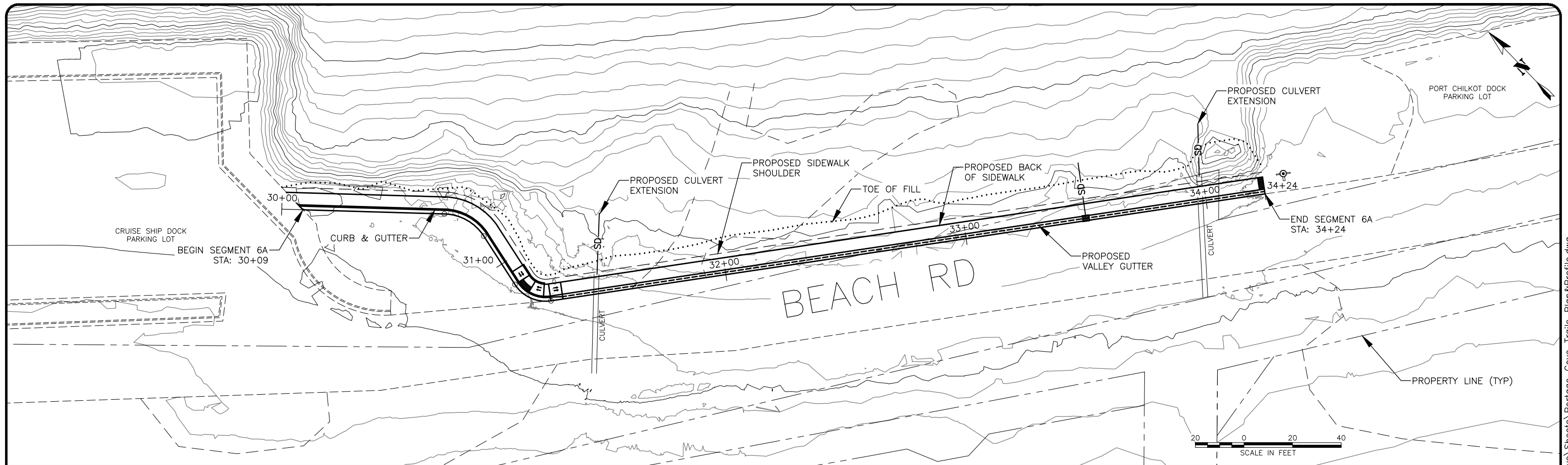
HAINES BOROUGH
ALASKA

PORTAGE COVE TRAILS

HAINES BOROUGH

**SEGMENT 5A STA 20+75
TO 25+87**

| SHEET NUMBER | |
|--------------|----|
| 13 | OF |
| 18 | |



65% DRAFT

| RECORD OF REVISIONS | | | |
|---------------------|------|-------------|----|
| No. | DATE | DESCRIPTION | BY |
| | | | |



DRAWN BY: C. BYDLON
 DESIGNED BY: L. CHAMBERS
 CHECKED BY: L. CHAMBERS
 219 MAIN ST #13
 HAINES, AK 99827
 1945 ALEX HOLDEN WAY #101
 JUNEAU, AK 99801
 solutions@proHNS.com
 www.proHNS.com

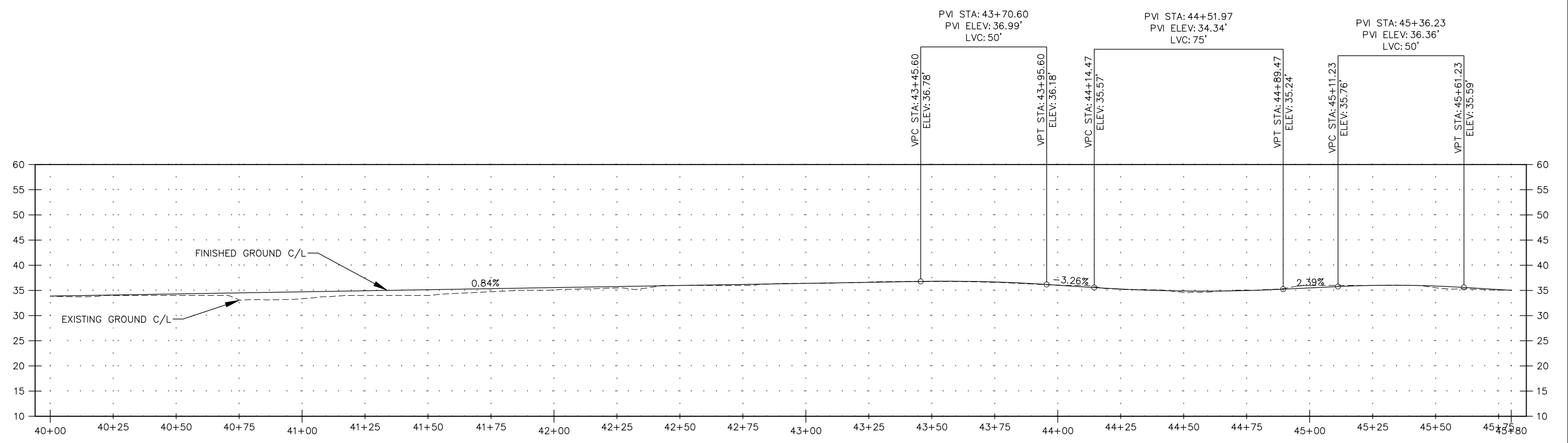
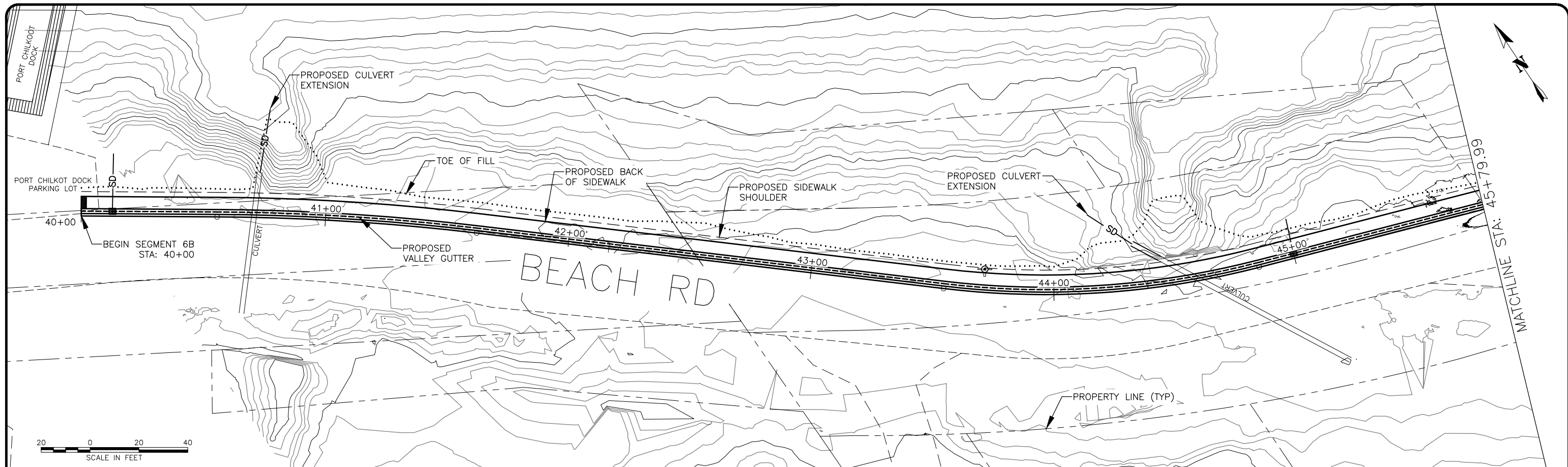


PORTAGE COVE TRAILS

HAINES BOROUGH

SEGMENT 6A STA 30+00
TO 34+25

| SHEET NUMBER | |
|--------------|----|
| 14 | OF |
| 18 | |



65% DRAFT

| RECORD OF REVISIONS | | | |
|---------------------|------|-------------|----|
| No. | DATE | DESCRIPTION | BY |
| | | | |

proHNS LLC
CERTIFICATE OF AUTHORIZATION #100662

219 MAIN ST #13
HAINES, AK 99827

1945 ALEX HOLDEN WAY #101
JUNEAU, AK 99801

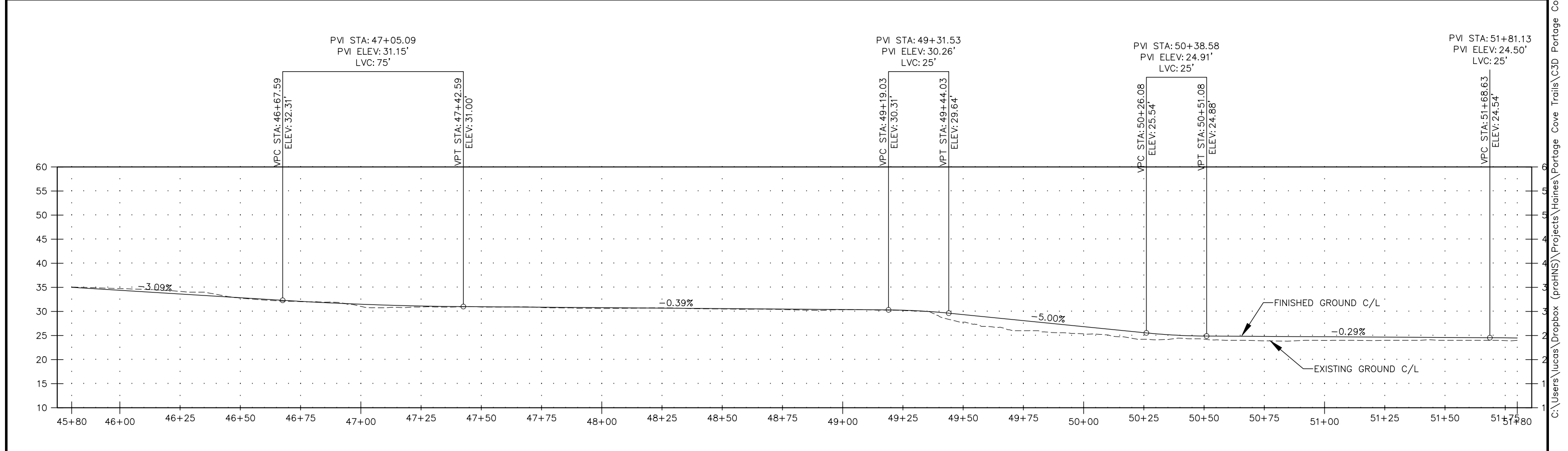
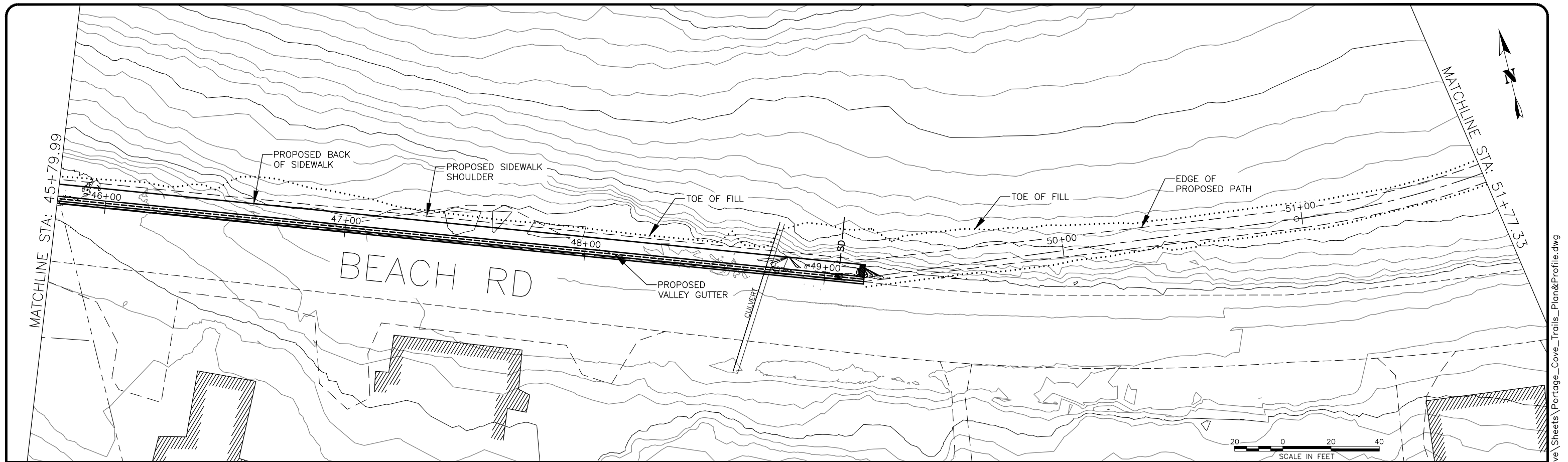
solutions@proHNS.com
www.proHNS.com



HAINES BOROUGH
ALASKA

PORTAGE COVE TRAILS
HAINES BOROUGH

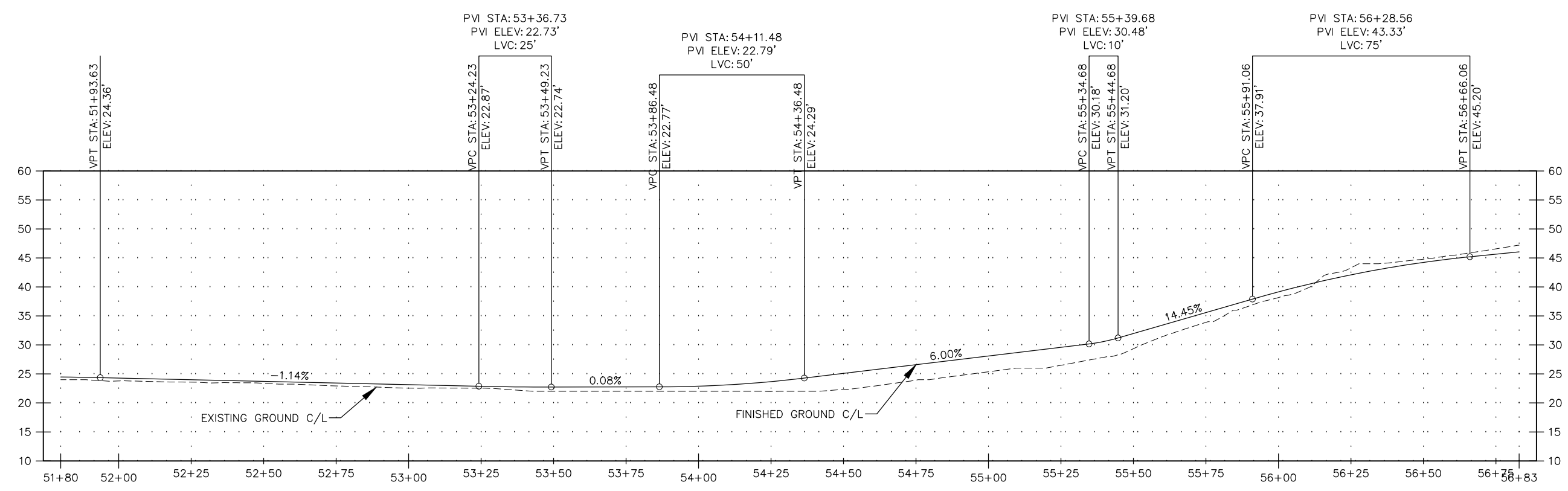
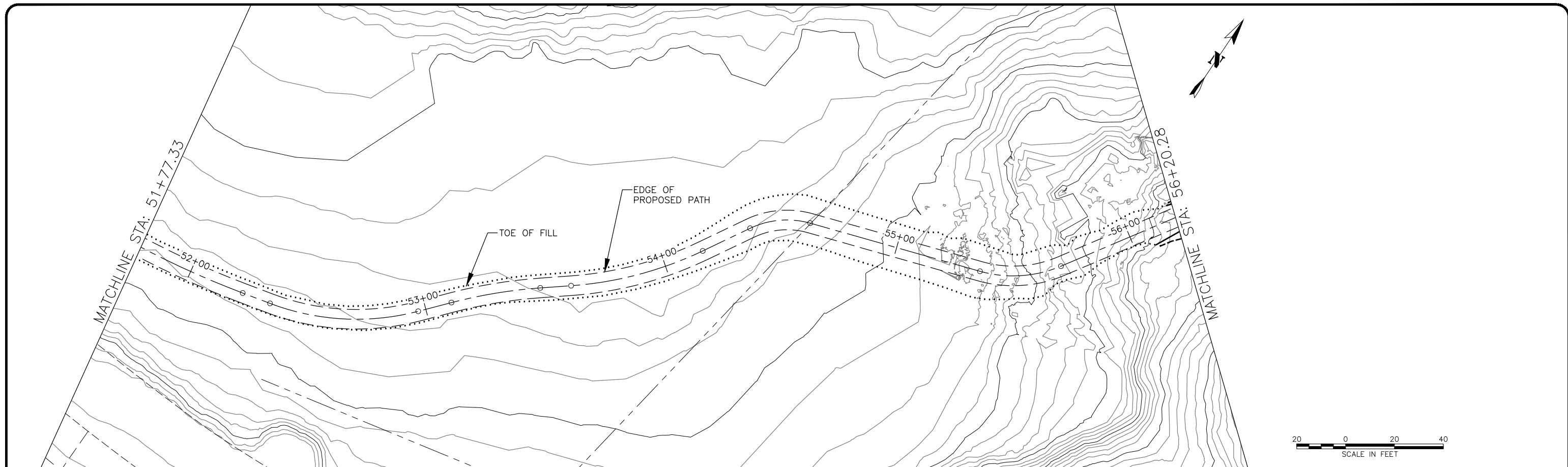
SEGMENT 6B STA 40+00
TO 45+80

| SHEET NUMBER | |
|--------------|----|
| 15 | OF |
| 18 | |



| | | | | | | | | | | |
|------------------|---------------------|--|--|--|--|--|--|--|--|--------------|
| 65% DRAFT | RECORD OF REVISIONS | | | |  proHNS LLC CERTIFICATE OF AUTHORIZATION #100662 | DRAWN BY: C. BYDLON DESIGNED BY: L. CHAMBERS CHECKED BY: L. CHAMBERS 219 MAIN ST #13 HAINES, AK 99827 1945 ALEX HOLDEN WAY #101 JUNEAU, AK 99801 solutions@proHNS.com www.proHNS.com |  HAINES BOROUGH ALASKA | PORTAGE COVE TRAILS HAINES BOROUGH | SEGMENT 6B STA 45+80 TO 51+80 | SHEET NUMBER |
| | | | | | | | | | | |
| | | | | | | | | | | OF |
| | | | | | | | | | | 18 |

C:\Users\lucas\Dropbox (proHNS)\Projects\Haines\Portage Cove Trails\C3D Portage Cove Sheets\Portage_Cove_Trails_Profile.dwg May 9, 2019



65% DRAFT

| RECORD OF REVISIONS | | | |
|---------------------|------|-------------|----|
| No. | DATE | DESCRIPTION | BY |
| | | | |

proHNS LLC
 CERTIFICATE OF AUTHORIZATION #100662
 219 MAIN ST #13
 HAINES, AK 99827
 1945 ALEX HOLDEN WAY #101
 JUNEAU, AK 99801
 solutions@proHNS.com
 www.proHNS.com

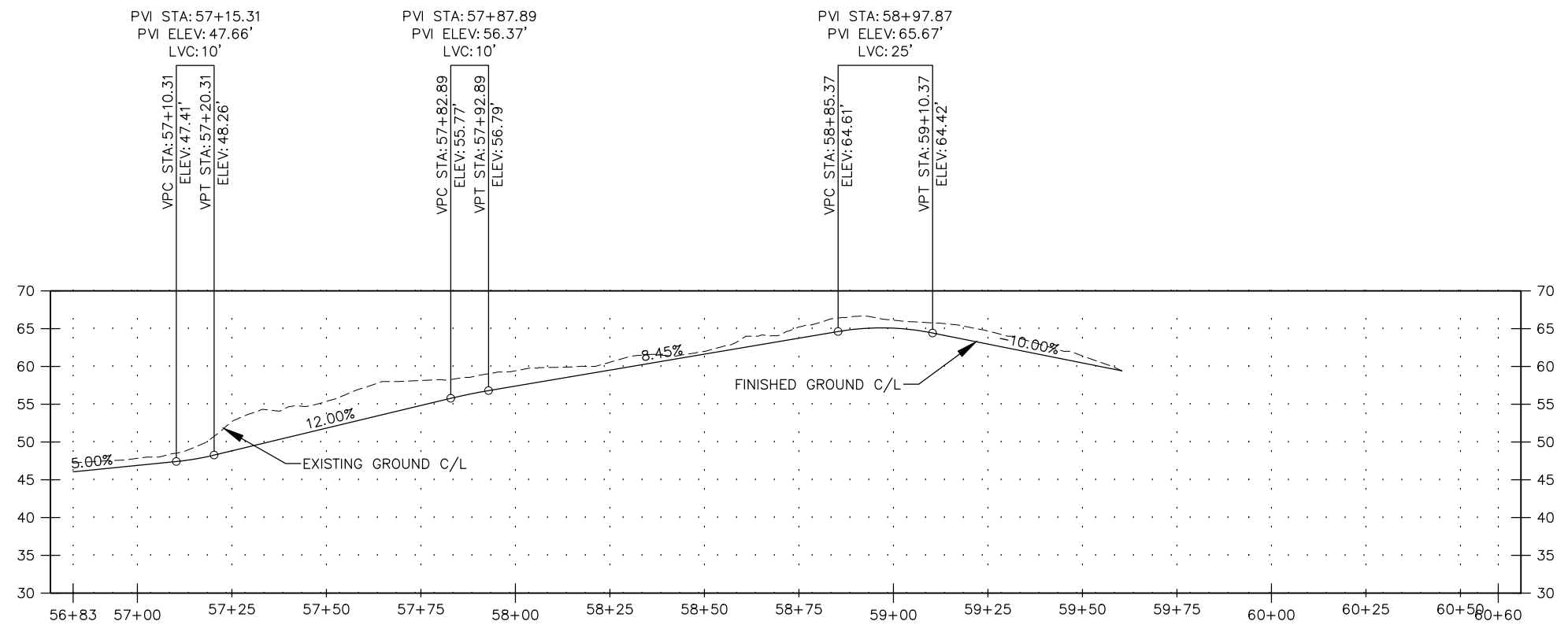
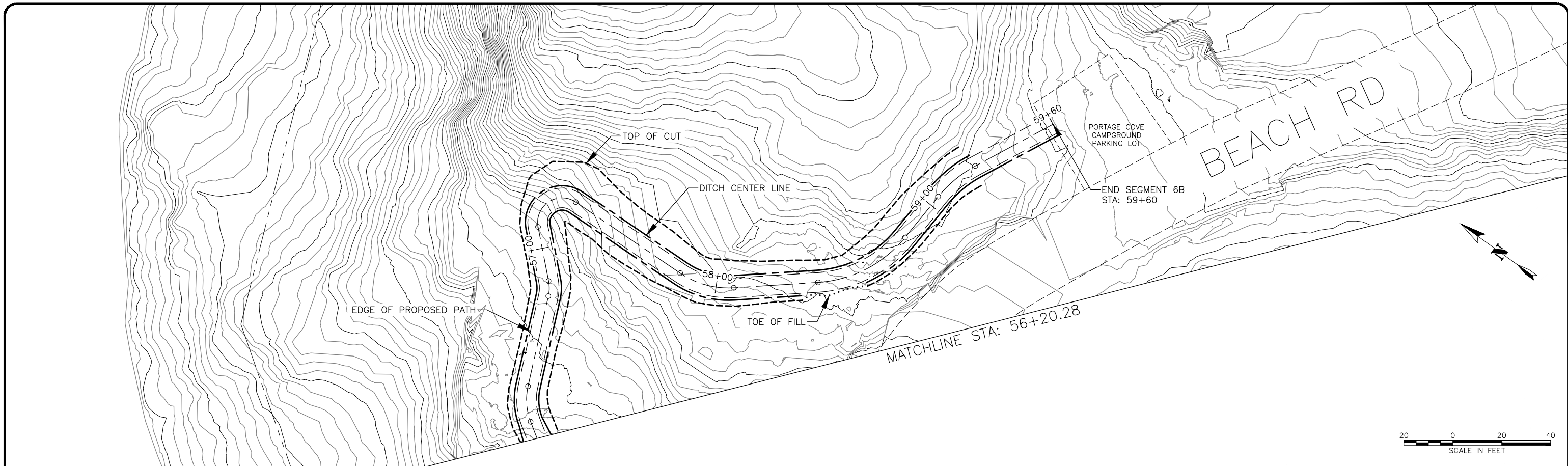


PORTAGE COVE TRAILS
 HAINES BOROUGH

**SEGMENT 6B STA 51+80
 TO 56+83**

| SHEET NUMBER | |
|--------------|----|
| 17 | OF |
| 18 | |

C:\Users\lucas\Dropbox (proHNS)\Projects\Haines\Portage Cove Trails\C3D Portage Cove\Sheets\Portage_Cove_Trails_Plan&Profile.dwg May 9, 2019



65% DRAFT

| RECORD OF REVISIONS | | | |
|---------------------|------|-------------|----|
| No. | DATE | DESCRIPTION | BY |
| | | | |



DRAWN BY: C. BYDLON
 DESIGNED BY: L. CHAMBERS
 CHECKED BY: L. CHAMBERS
 219 MAIN ST #13
 HAINES, AK 99827
 1945 ALEX HOLDEN WAY #101
 JUNEAU, AK 99801
 solutions@proHNS.com
 www.proHNS.com



PORTAGE COVE TRAILS

HAINES BOROUGH

SEGMENT 6B STA 56+83
TO 60+60

| SHEET NUMBER | |
|--------------|----|
| 18 | OF |
| 18 | |

C:\Users\lucas\Dropbox (proHNS)\Projects\Haines\Portage Cove Trails\C3D Portage Cove\Sheets\Portage_Cove_Trails_Plan&Profile.dwg May 9, 2019