



# Welcome to Haines

## Valley of the Eagles Byway

America's Byways®: National Scenic Byways Online

Sign In Your Profile Search

HOME EXPLORE BYWAYS SHARE EXPERIENCES ABOUT BYWAYS PRESS ROOM come CLOSER.

**Snowy Adventures**  
Bundle up and venture out into the frosty landscape of America's Byways.

**come CLOSER to winter**

Quail Trail Scenic Byway, Minnesota

**Snowmobiling Fun on the Shenyenne River Valley Scenic Byway.**  
If speeding across powder-covered fields and hills is your idea of winter fun, then the Shenyenne River Valley Scenic Byway of North Dakota is your place to be this snowmobiling season. Tune up your sled and get ready to experience an expansive trail system running the entire length of the byway and beyond!

**Winter Adventures on the George Parks Highway Scenic Byway.**  
As temperatures drop and snow begins to swirl, many Alaskans come out to play in an extreme winter wonderland. On the George Parks Highway Scenic Byway, there's plenty to do even when the temperatures fall to frigid! Go cross-country skiing or biking Alaska-style, camp in the snowy expanses under an auroral night sky, express your inner artist with a crystal-clear ice carving and more!

**Goodyear's Top 50 Scenic, Comfortable Drives.**  
In news just released by Goodyear, their national survey reveals that 70% of Americans are planning one fall road trip. Here are Goodyear's suggestions for the 50 most comfortable touring drives--and yet, they just happen to be along America's Byways!

[Browse the story archive](#)

**A Traveler's Tale**  
DPA visited Cherokee Skyway (NC, TN) on October 23, 2010.  
*The Cherokee Skyway is a hidden pearl in the mountains of NC and TN. We made a one day drive, starting from Robbinsville, NC and going to Tellico Plains, TN. It took*

**Byway Happenings**

Feb 5	Warm Up, Overgo on the Great Lakes Seaway Trail
Feb 4	Chocolate Festival on Logan Canyon Scenic Byway
Feb	Massena Winter Festival

**Find Byways**  
Search near any U.S. location:

● All-American Roads ● National Scenic Byways

[List all of America's Byways](#)

**Nearby Byways** **Featured Destinations**

Within 100 miles of **Haines, AK**

**Haines Highway - Valley of the Eagles**  
NE 10.7 mi / 17.3 km

**Alaska's Marine Highway**  
E 16.7 mi / 26.8 km

<http://www.byways.org/> [2/5/2011 4:23:01 PM]

www.byways.org

National Scenic Byways works for Haines 24/7/52



[HOME](#) [EXPLORE BYWAYS](#) [SHARE EXPERIENCES](#) [ABOUT BYWAYS](#) [PRESS ROOM](#)

## Haines Highway - Valley of the Eagles

**State:** [Alaska](#)

**Length:** 44.0 mi / 70.8 km

**Time to Allow:** One hour

This highway connects the Inside Passage community of Haines with Haines Junction in the Yukon Territory. First used by the Chilkat Indians, the highway became a packhorse trail to the Klondike goldfields in the late 1880s. In 1943, the U.S. Army used the highway as a military access road during World War II.

The story of the Haines Highway is how the highway is submerged in the natural and cultural settings of the true home of the Bald Eagle.

The most significant natural resource along the Haines Highway is the Chilkat River and the Alaska Chilkat Bald Eagle Preserve. The byway runs through the Alaska Chilkat Bald Eagle Preserve along the Chilkat River and through the prime eagle roosting and feeding grounds. This Preserve and its ecosystem are of national and world significance due to hosting the largest congregation of bald eagles in one location. The Chilkat River has the last salmon run in Southeast Alaska and during the months from October to February, more than 3,500 bald eagles will congregate within this 48,000-acre preserve to feed on the late spawning salmon. The eagles fly from more than 100 miles, as far away as the Yukon, to gather at the preserve.

The Chilkat River is a very unique body of water within the State of Alaska. Most rivers in Southeast Alaska fall from very high mountain elevations rapidly down to the sea and have a very short length. While this may be a typical river in other parts of Alaska, the river remains warm and ice-free throughout the year creating a unique environment in the region. The combination of slow, meandering river currents, gravel aquifers, and consistent water temperature provides a most unusual and exceptional situation for spawning fish and their eggs. The Tlingit name Chilkat means "winter storage container for salmon." All species of Alaskan salmon spawn in the Chilkat River and its tributaries. This offers a massive volume of food for a wide variety of creatures, including the bald eagle, black bear, and brown bear. Eulachon is another fish that spawns annually in the Chilkat River. This smelt-like fish spawns in the millions every spring and is extremely high in oil content. This unique ecosystem and its hydrology and geology tells a fascinating story to visitors.

This rich environment is home to a wide variety of creatures. A visit to Haines and the surrounding area offers chances to see many mammals and birds including moose, wolf, coyotes, sea otters, mountain goats, lynx, beavers, sea lions, humpback whales and orca whales. More than 120 species of birds have been sighted in this valley, including trumpeter swans and arctic terns.



Add to Wishlist  
[What is this?](#)



### Notice

For road conditions in Alaska and Yukon, call 511 or visit [511.alaska.gov](#) or [511.yukon.ca](#)



### Local Information

**Haines Visitor Center**  
122 Second Avenue  
Haines, AK 99827  
907-766-2234

**Haines Highway** :  
Read all about Alaska's Haines Highway.



### Print-n-Go

Visit the Print-n-Go page to view and print travel

mhtml:file:///Z:/Administration/Project Clerk/Debra/Misc. Odd Jobs/Scenic Byways/byways... 2/5/2011

The Haines Highway is also home to the Tlingit people. Klukwan Village lays approximately halfway along the highway and is home to the Chilkat people. This permanent village offers a view into one of the very few river-based (rather than ocean-based) Tlingit villages in Alaska. The Chilkat River has supported Tlingit people for centuries. Throughout that time, the people of this village have maintained an important cultural relationship with the bald eagle, whose populations have always been particularly high in this special place, which the Tlingit people named "Valley of the Eagles." Like the eagle, the Tlingit have lived from the riches of the Chilkat River and their stories and cultures are interwoven.

related facts about this byway for your reference as you drive Haines Highway - Valley of the Eagles.

[Print-n-Go](#)

During the summer, autumn, and early winter, salmon runs in the river rounds out the diet of eagles. Like the eagles, the Tlingit people also subsisted off the rich year-round fish runs found in the Chilkat River.

come CLOSER  
[to Experience...](#)



### See Eagles Soar Along the Chilkat River

Sep 9, 2010 in [Get Outdoors! And Enjoy Nature](#)

Make sure you have your camera handy on the Haines Highway - Valley of the Eagles in Alaska - you may capture a shot of an eagle making a spectacular dive into the Chilkat River to catch a fish!

come CLOSER  
[to Enjoy the Ride...](#)



### 1-Day Trip: Haines, The Valley of the Eagles (Alaska)

Wildlife opportunities abound along this highway which include moose, bears, eagles, and wolves. There are many pull-outs and stops to make beyond...

mhtml:file:///Z:/Administration/Project Clerk/Debra/Misc. Odd Jobs/Scenic Byways/byways... 2/5/2011

[www.byways.org](http://www.byways.org)

Valley of the Eagles Byway: Overview

### Haines Highway - Valley of the Eagles Haines, The Valley of the Eagles

Departure: Haines Visitor Center, Alaska  
Destination: Dalton Cache/U.S.-Canada Border, Alaska  
Time to allow: 1 day

Wildlife opportunities abound along this highway which include moose, bears, eagles, and wolves. There are many pull-outs and stops to make beyond the museums and attractions of downtown Haines that will clarify the history and culture of the Tlingits and early settlers as well as wildlife. The predominant theme is the eagle and how history and culture as well as present day events are wrapped around the eagle and its existence in the valley. Fall is the best time to witness the phenomenon of the gathering of the eagles. Visitors should be cognizant of driving conditions in the winter months.

#### Day 1

##### • Start: Haines Visitor Center

The first in-person experience with Haines for many travelers is the Visitors Center in downtown Haines. This facility is well-located and well-staffed. It provides the orientation information that a visitor needs. The Visitors Center can orient the traveler to the interpretive experience offered on the byway and provide area and road information.

##### • Stop 1: Fort William H. Seward

Directions from previous place: When leaving the visitor center, turn left on to Second Avenue. Drive one block to stop sign; turn left on Haines Highway. Drive a quarter mile. Fort Seward buildings are on left. Use Fort Seward Walking Tour Brochure for details of this area.



Distance from Previous Site: 0.4 miles / 0.6 km

Travel Time from Previous Site: 2 minutes

Suggested Time at This Site: 1 hour

This early 1900s wood-structure fort consists of military housing, barracks, military ancillary buildings and parade grounds. Today, the facility is a mixture of private housing, shops, restaurants, workshops, artisan facilities, and lodging. Plans are underway to complete the preservation and restoration of buildings that have not yet been occupied. The fort is located within walking distance of downtown (approximately 5-10 minute walk) and is an outstanding destination.

##### • Stop 2: Sheldon Museum and Cultural Center

Directions from previous place: Turn left on to the Haines Highway from any road leaving the Fort Seward area. Turn right on to Second Avenue. Turn right on to Main Street. Drive two tenths of a mile. Museum is on right.



Distance from Previous Site: 0.4 miles / 0.6 km

Travel Time from Previous Site: 2 minutes

Suggested Time at This Site: 45 minutes

This is a high-quality community museum in downtown Haines that covers the history of the area from Tlingit culture, to early gold mining and fishing settlements, to recent years and development. The museum includes numerous artifacts and cultural items. The museum presents a complete understanding of the Haines Highway corridor.

##### • Stop 3: American Bald Eagle Foundation

Directions from previous place: Turn left on to Main Street. Turn left on to Second Avenue. Turn left on Haines Highway. American Bald Eagle Foundation is on the corner of Haines Highway and Second Avenue.



Distance from Previous Site: 0.3 miles / 0.5 km

Travel Time from Previous Site: 4 minutes

Suggested Time at This Site: 1 hour

An exceptional facility located in downtown Haines, this facility offers a quality natural history museum and excellent interpretive presentations on bald eagles and the hundreds of other species found within the Chilkat Valley and around Haines. Public lectures on the preserve and the natural environment are provided during the summer.

##### • Stop 4: Anway Homestead

Directions from previous place: Turn left on to the Haines Highway. Drive approximately 1.5 miles. Anway House is on right across from Valley of the Eagles Golf Course and Driving Range.



Distance from Previous Site: 1.5 miles / 2.4 km

Travel Time from Previous Site: 5 minutes

Suggested Time at This Site: 30 minutes

This homestead was built in 1903 and is undergoing restoration so it can be opened to the public. This facility provides the opportunity to explore early pioneer culture through exploring the various buildings and artifacts. Additional work is planned including the restoration of Anway's gardens and orchard that produced many famous Alaskan varieties of strawberries and apples.

##### • Stop 5: Haines Airport

Directions from previous place: Turn right and head north on the Haines Highway. Turn left on airport road.

Distance from Previous Site: 1.5 miles / 2.4 km

Travel Time from Previous Site: 5 minutes

Suggested Time at This Site: 15 minutes

# Valley of the Eagles Byway: Itinerary



This site was once the home of the Tlingit village of Kluktoo. The village shaman had a vision that the village would be destroyed and relocated to present day Klukwan. A short time later a large landslide destroyed the old village site.

• **Stop 9: Council Grounds River Trail**

Directions from previous place: Turn north up the Haines Highway and drive .6 miles to the Council Ground Visitor Area.

Distance from Previous Site: 0.6 miles / 1.0 km

Travel Time from Previous Site: 3 minutes

Suggested Time at This Site: 3 hours



This facility offers parking, restrooms, picnic shelter, RV parking, water, river access, trails and interpretation. The interpretive signs at Council Grounds cover the eagle population and the overall ecosystem of the river as it relates to the river. The Trail connects the Council Grounds to the North Council Grounds and extends somewhat to the north toward the village of Klukwan. Much of the trail is accessible for the disabled and has interpretive panels along it and is a great facility. The village of Klukwan would very much like to extend this trail all the way to their new cultural center and they are working now on the engineering plans to build the extension.

• **Stop 10: North Council Grounds**

Directions from previous place: Turn left on the Haines Highway and drive 1.4 miles. North Council Grounds pull-out is on the left.

Distance from Previous Site: 1.4 miles / 2.2 km

Travel Time from Previous Site: 7 minutes

Suggested Time at This Site: 10 minutes

This facility has similar amenities to the Council Grounds site. Both sites are managed by the State Parks department and are in excellent condition. This is a popular area for viewing eagles in the fall.

• **Stop 11: Jilkaat Kwaan Cultural Heritage Center and Bald Eagle Observatory**

Directions from previous place: Turn left on the Haines Highway to Klukwan Village. Turn left at Klukwan sign. Heritage center is down the hill on the left.

Distance from Previous Site: 0.8 miles / 1.3 km

Travel Time from Previous Site: 5 minutes

Suggested Time at This Site: 1 hour 30 minutes



This facility is located in the Klukwan tribal village 21 miles up the Haines Highway. The Cultural Learning Camp is now constructed and includes a tribal long house, a carving shed, and a smokehouse and allows the exhibition and performance of many cultural opportunities. The proposed world-class heritage center will build upon the learning camp and include an exhibit hall with static and interactive cultural interpretation opportunities, a restaurant, bald eagle viewing and interpretation and access to recreation trails along the Chilkat River. This facility will become the

major cultural destination between Haines and the Canada border and is likely to be Alaska's Premier Cultural Heritage Center.

• **Stop 12: Klehini River Scenic Viewing Area**

Directions from previous place: Turn left on the Haines Highway and drive 5.2 miles. Viewing area is on the left.

Distance from Previous Site: 5.2 miles / 8.3 km

Travel Time from Previous Site: 10 minutes

Suggested Time at This Site: 15 minutes



This site was developed by ADOT&PF during the reconstruction of the northern end of the Haines Highway. It consists of interpretive signage covering the local ecosystems and the Dalton/Grease Trails. There are picnic tables, viewing scopes and small covered shelter.

• **Stop 13:  Mile 33 Roadhouse**

Directions from previous place: Turn left on the Haines Highway and drive 6.3 miles to the restaurant facility which will be on the right.

Distance from Previous Site: 6.3 miles / 10.1 km

Travel Time from Previous Site: 10 minutes

Suggested Time at This Site: 45 minutes

This long-standing cabin-styled restaurant is an institution along the Haines Highway and is a jump-off point for the winter extreme sport of heli-skiing. This facility provides fuel services and is an excellent dining option especially for breakfast and lunch being known for its Mile 33 Burger.

• **End: Dalton Cache/U.S.-Canada Border**

Directions from previous place: Turn right on to the Haines Highway and drive 7.3 miles north to the US/Canadian Border. The US Customs office is on the left with parking behind the building.

Distance from Previous Site: 7.3 miles / 11.7 km

Travel Time from Previous Site: 15 minutes

The Bureau of Land Management maintains the Dalton Cache, an unstaffed historic cabin that is not open to the public on the Canada/US border. This site has several interpretive and celebratory signs indicating that the Cache has served as a toll house for the Dalton Trail, a roadhouse, and Customs office. The now boarded-up facility is not visible to drivers and the access is only allowed after checking in with the US Border Agents in the Customs office. There is no signage at this time alerting travelers to the site and it is recommended to talk to border agents before walking down to the structure.

**Totals for Day 1**

Total Distance Traveled: 50.1 miles / 80.2 km  
Total Travel Time: 1 hour 43 minutes

# Valley of the Eagles Byway: Itinerary (cont. )

## HAINES HIGHWAY CORRIDOR PARTNERSHIP PLAN



Gaining a National Scenic Byway designation is  
an Economic Development Strategy





# Valley of the Eagles Byway



*"Meaning*

is the key to our most memorable travel experiences.

Trips that offer *meaning* are those that we most recommend; we want to return.

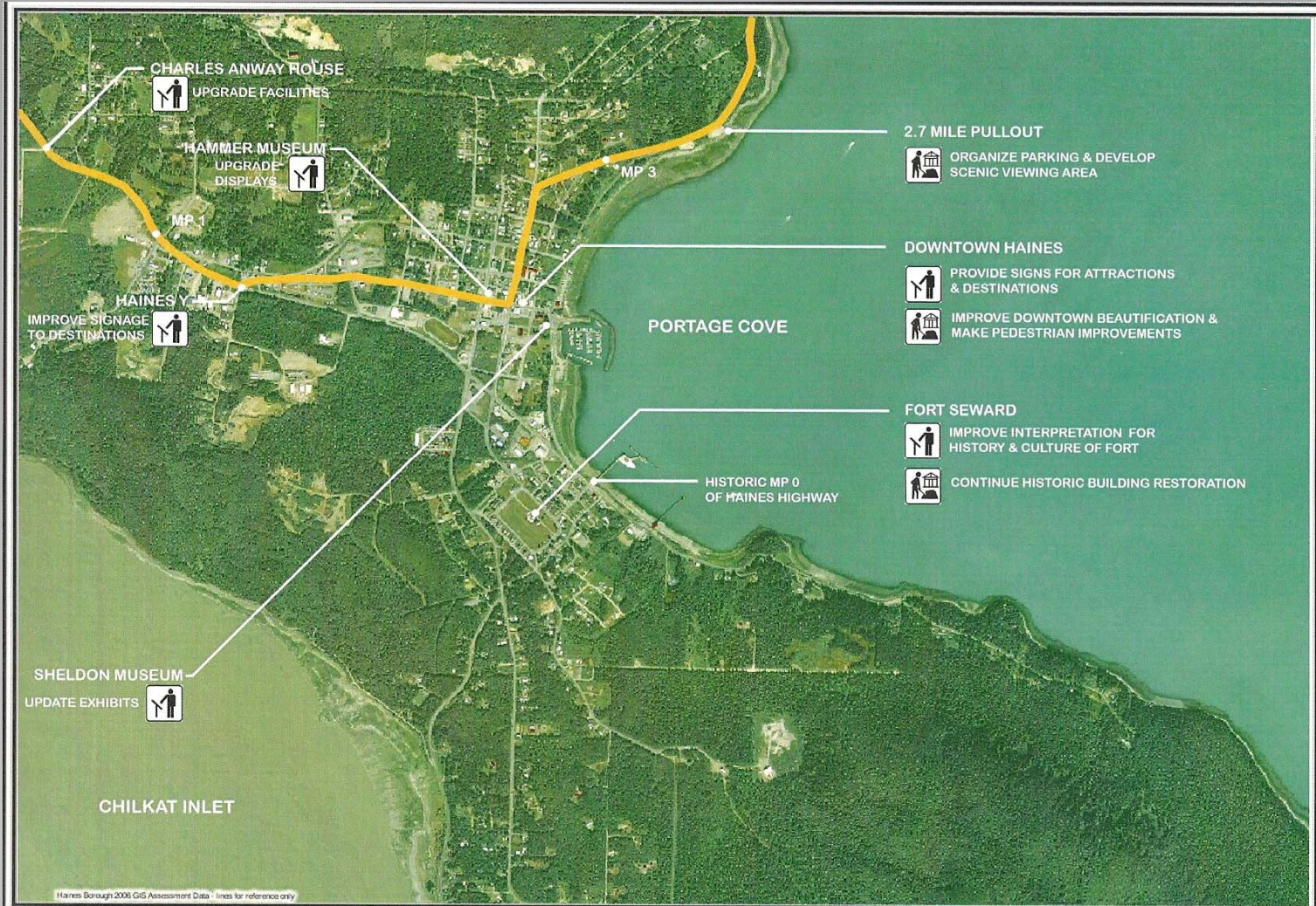
A strong interpretive program can provide that meaning."





"Interpretation: story and information-telling

...the use of people, signs, audio tours and other methods to tell a story about a place or people."



**The easiest way is the truck route out of town**



### Ferry Terminal:

Requires backtrack

Ferry freight is staged on forward apron

Drivers are anxious, need to orient

Vehicles are Caravanned

### Tanani Point Pullout

Too near embarkation, too far from town

Better accommodates northerly traffic

Toilets are the draw

Travelers will be drawn to Nukdik Point vista

### Nukdik Point Pullout

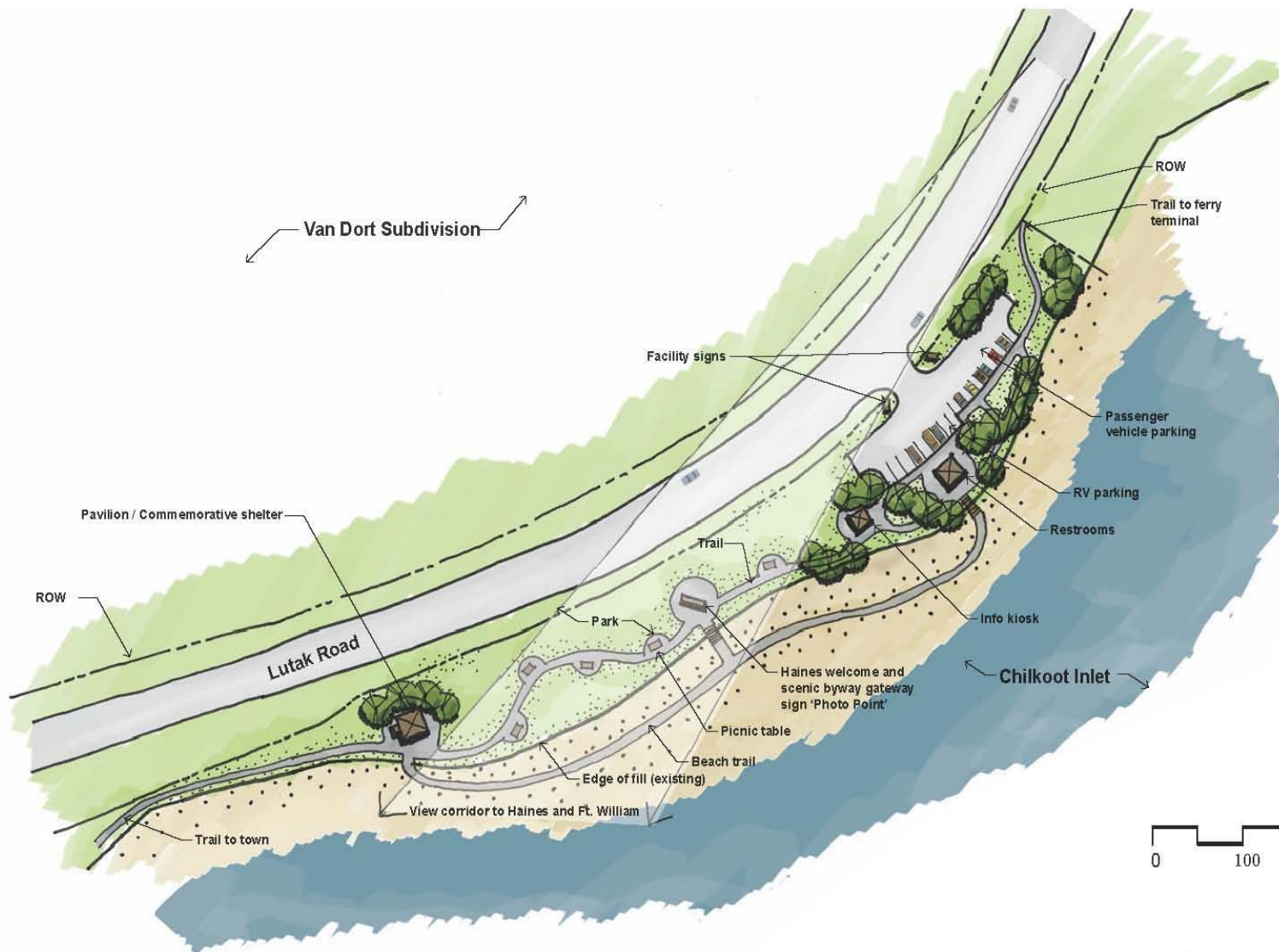
Compelling vista

Travelers are secure: can see community/amenities

Safer traffic pattern than Tanani pullout

Backdrop is the destination (community)





## Nukdik Point Gateway

Haines, AK



# Possible Site Plan – Nukdik Point Gateway





Nukdik Point is a rare place in North America – there are perhaps two or three places in Yosemite National Park - where anyone can take a dramatic landscape. Nukdik Point hands it to you: a solid foreground with the rocks on the beach, the Fort drawing your eye into the photo, and the dramatic mountains in the background.

- Ron Horn, photographer and teacher







## Riley-Freer Memorial Scholarship Seeks to Benefit Generations of Students Through Endowment

Give online at the  
University of Alaska  
Foundation's  
Secure Website:

<https://ssl.ua.edu/ua/uafound/forms/securegift.html>

Or mail your form to  
University of Alaska Southeast  
Office of Development & Alumni Relations  
11120 Glacier Hwy., Juneau, AK 99801

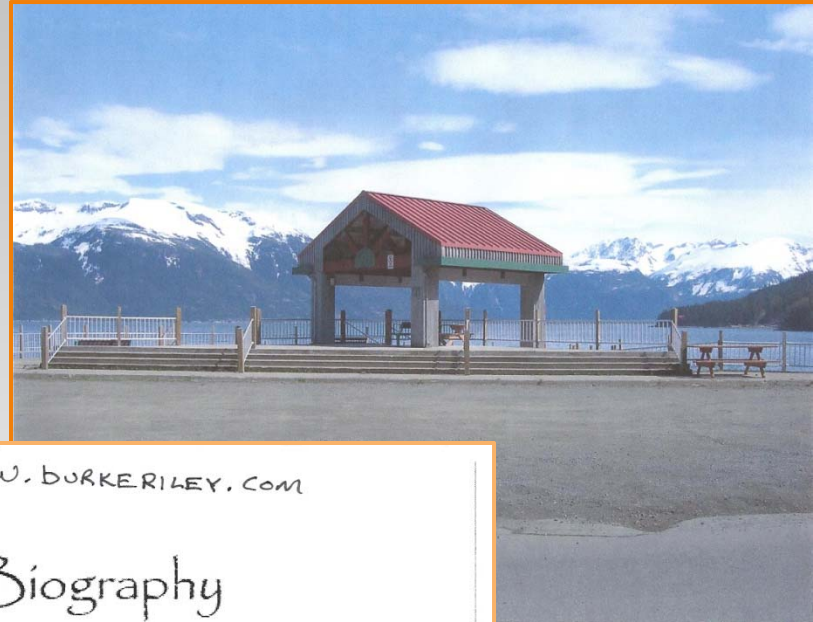
For information call (907) 796-6416  
or 1-877-465-4827 ext. 6416  
Email: [development@uas.alaska.edu](mailto:development@uas.alaska.edu)

Thank you for your support of  
higher education in  
Southeast Alaska.

UAS is an AAED educational institution.



Alaska pioneers and long-time friends Richard "Dick" Freer, George Danner II and Burke Riley



[www.burkeriley.com](http://www.burkeriley.com)

## Biography



[Home](#) | [Biography](#) | [Scholarship](#) | [Pictures](#) | [Links](#)

Born in Kalispell, Montana, on April 2, 1914, Burke Riley was the second of five children of Margaret Dryer Riley and Edmund Burke Riley. He grew up in Yakima, Washington, where with Dick Freer he was a member of Boy Scout Troop 9, led by the legendary Curtiss Gilbert. During the summers he worked in the Yakima fruit

# Commemorative Memorial Opportunity



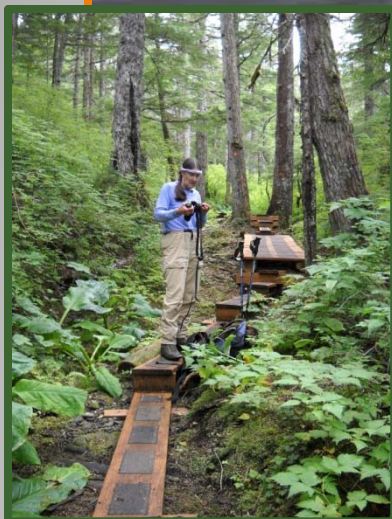
**Tlingit Heritage**





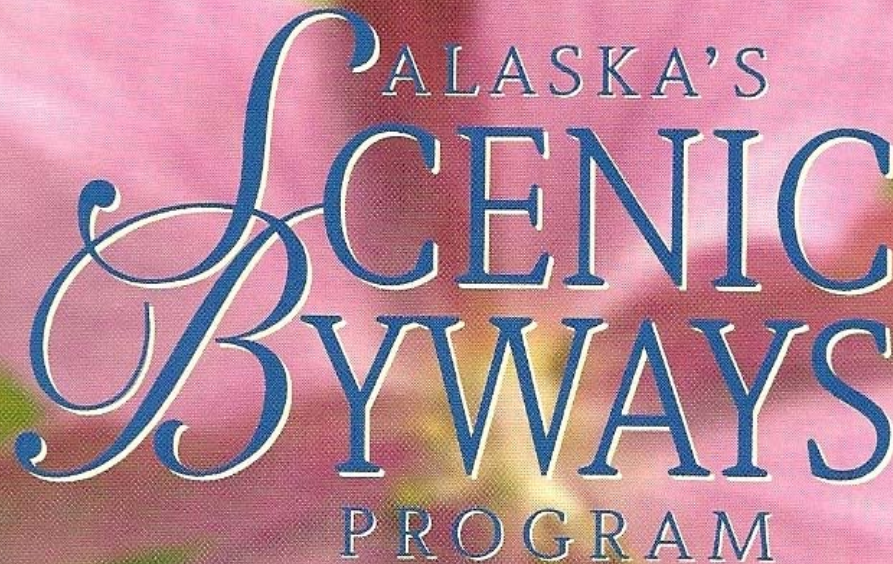
Photo by Pam Randles

## Geography and Environment



Recreation



The logo for Alaska's Scenic Byways Program features the text "ALASKA'S SCENIC BYWAYS PROGRAM" in blue serif font. The word "SCENIC" is in a large, stylized script font, while "BYWAYS" is in a smaller, bold serif font. The word "PROGRAM" is in a small, all-caps serif font. The background is a close-up of pink flowers.

# ALASKA'S SCENIC BYWAYS PROGRAM

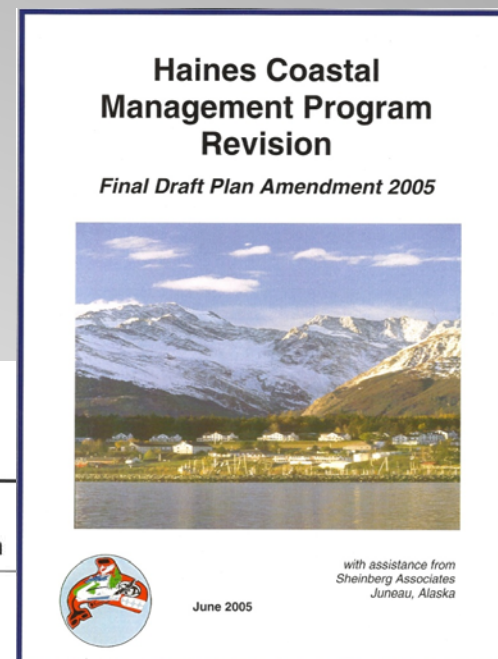
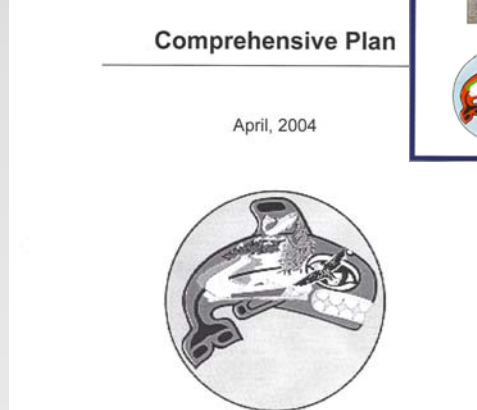
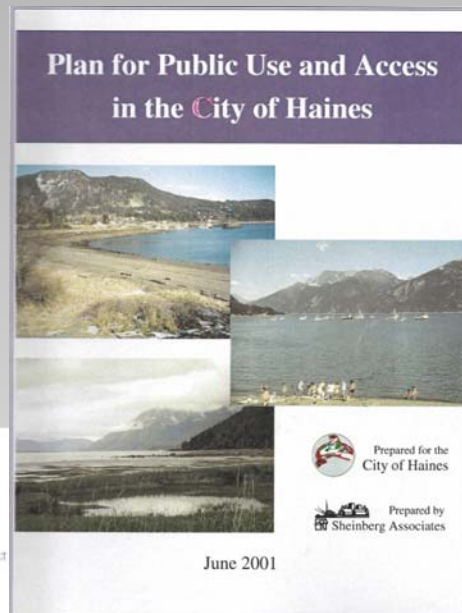
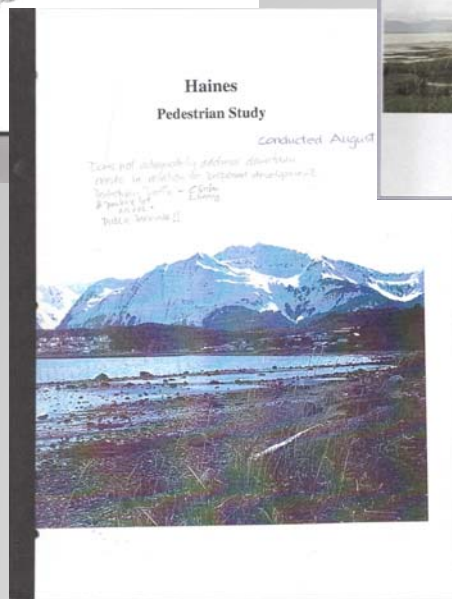
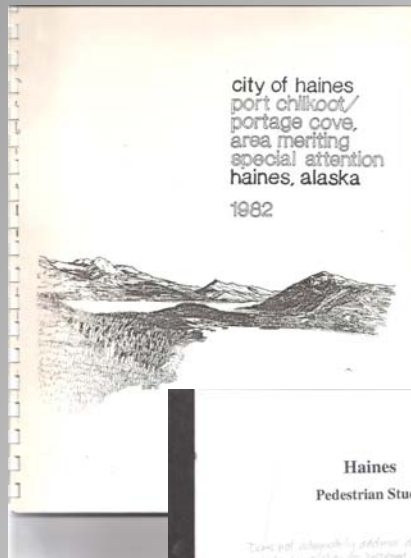
## Alaska

All-American Road  
Seward Highway

National Scenic  
Byways  
Inside Passage Route  
Gulf Route  
Glenn Highway

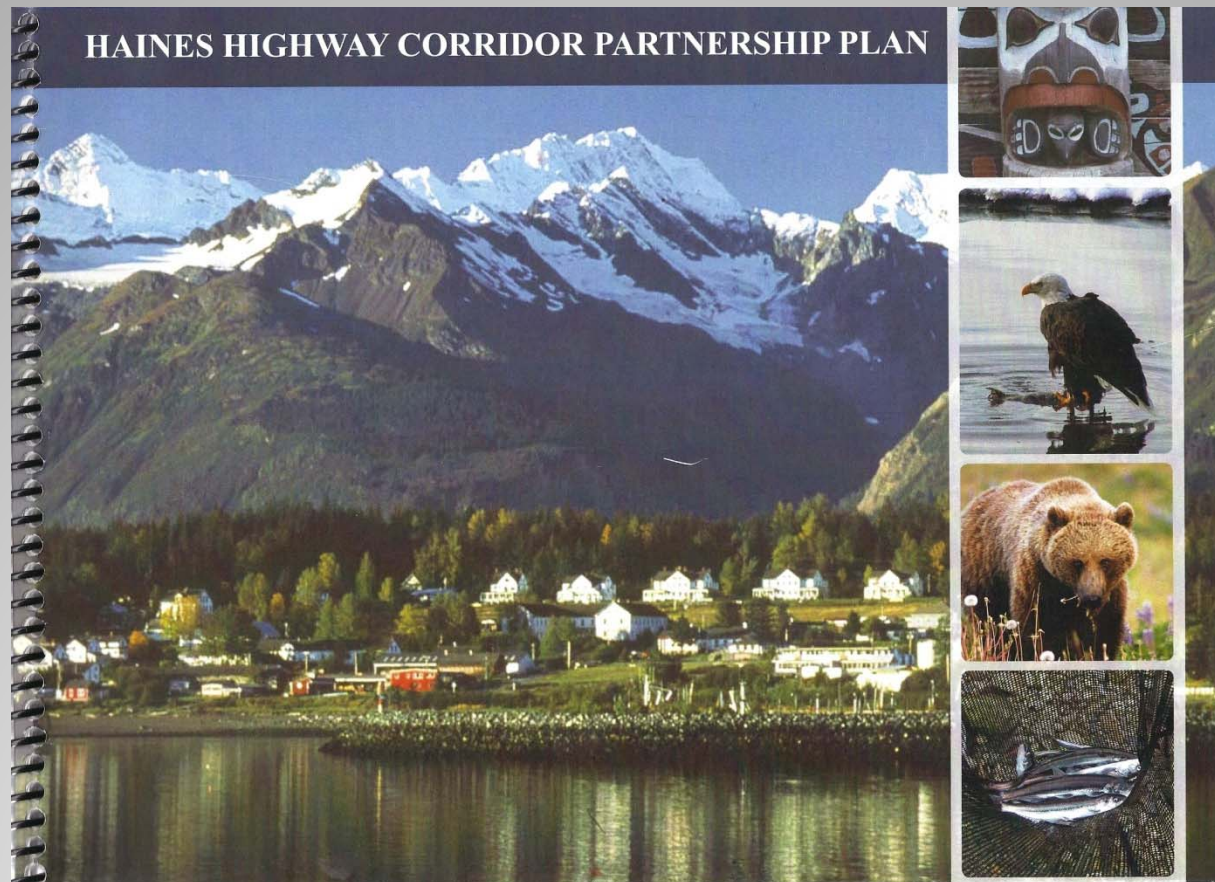
State Scenic Byways  
Dalton Highway  
Steese Highway  
Taylor Highway  
Parks Highway  
Richardson Highway  
Haines Highway  
Sterling Highway  
Alaska Railroad

Scenic Byways philosophy:  
Develop and Manage Byways to serve Communities  
that cater to and benefit from *travelers*.

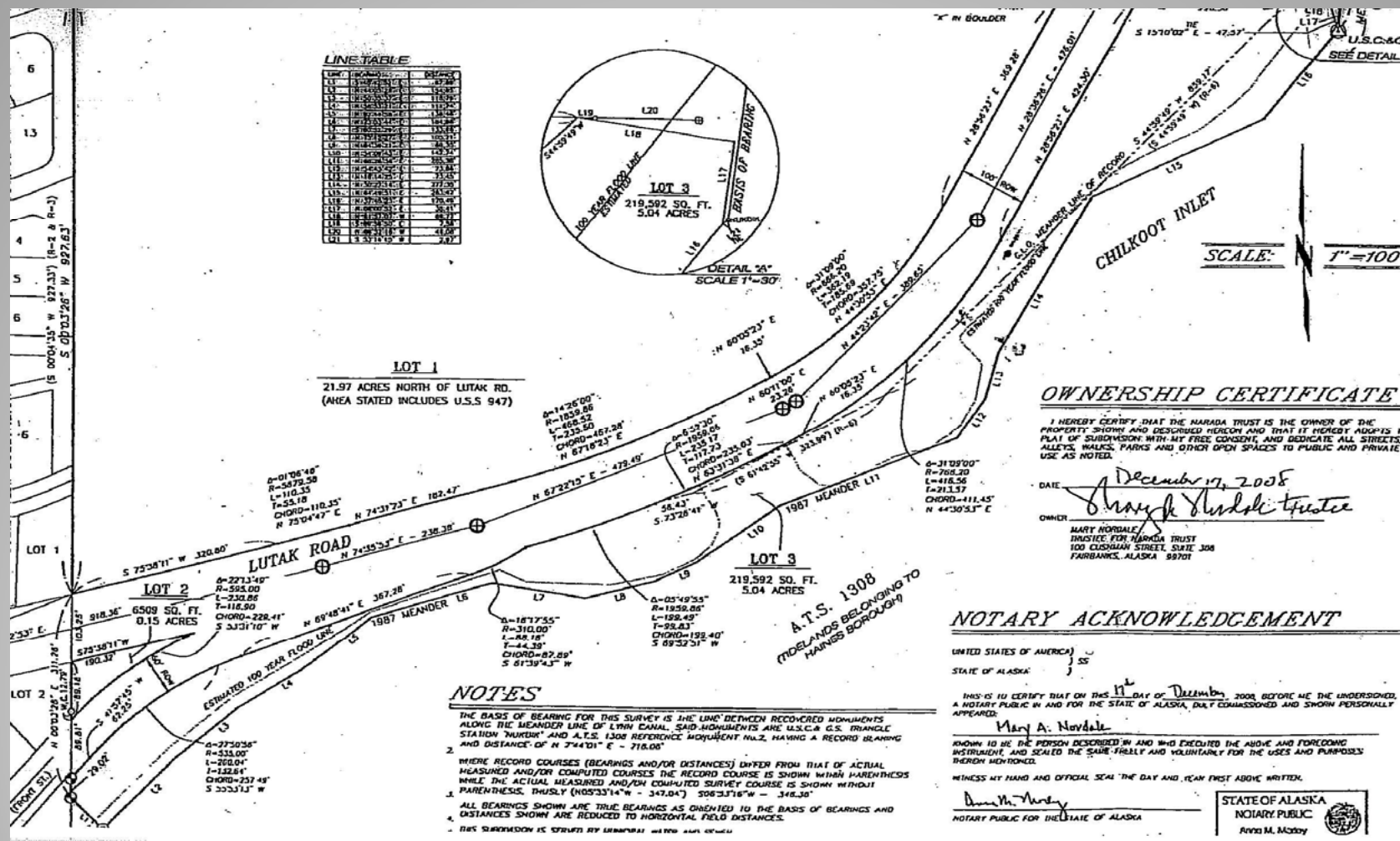


# Haines Planning History





Opportunity to work our plans



Opportunity: To provide public access, to honor, interpret and give meaning to community values and traveler's experience.





Purchase Price for three acres of land: \$450,000

#### Estimated Development Costs

Planning: \$50,000

Civil: \$140,000

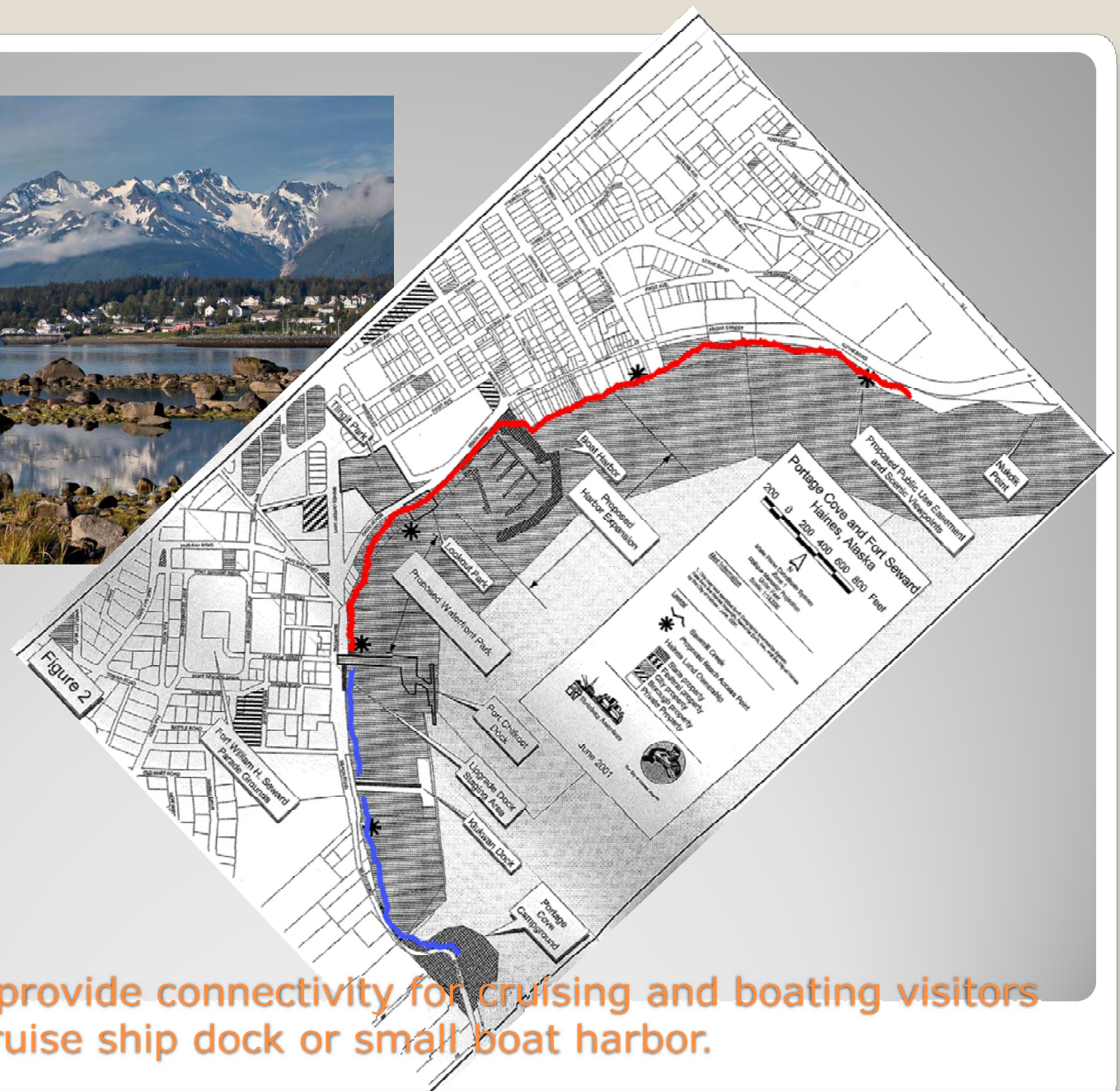
Architectural & Landscape: \$300,000

Signage: \$80,000

Total: \$1,020,000

**OPPORTUNITY:** To strategically locate a community Gateway through collaborations with federal, state and tribal entities.





**Opportunity:** To provide connectivity for cruising and boating visitors arriving at the cruise ship dock or small boat harbor.



Good evening from Nukdik Point